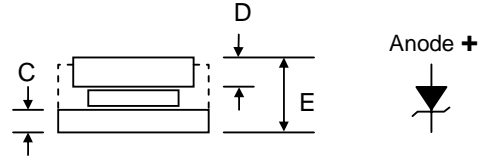


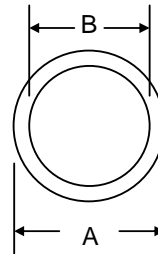
Features

- Diffused Junction
- Low Leakage
- Low Cost
- High Surge Current Capability
- Die Size 184 mil HEX



Mechanical Data

- Case: Cell Diode Passivated with Silicon Rubber
- Terminal: Copper Disc with Ag Plated
- Polarity: Indicated by Large Disc On Cathode Side, Add "R" Suffix to Indicate Reverse Polarity, i.e. C3520R
- Mounting Position: Any
- **Lead Free: For RoHS / Lead Free Version, Add "-LF" Suffix to Part Number, See Page 2**



C35		
Dim	Min	Max
A	—	6.40
B	—	5.46
C	0.75	—
D	1.0	—
E	—	2.2
All Dimensions in mm		

Maximum Ratings and Electrical Characteristics @ $T_A=25^\circ\text{C}$ unless otherwise specified

Single Phase, half wave, 60Hz, resistive or inductive load.
For capacitive load, derate current by 20%.

Characteristic	Symbol	C3520	C3524	Unit
Peak Repetitive Reverse Voltage Working Peak Reverse Voltage DC Blocking Voltage	V_{RRM} V_{RWM} V_R	16	20	V
Average Rectified Output Current @ $T_C = 150^\circ\text{C}$	I_o	35		A
Breakdown Voltage Min. Breakdown Voltage Max.	@ $I_R = 100\text{mA}$ @ $I_R = 100\text{mA}$ V_{BR}	20 26	24 32	V
Non-Repetitive Peak Forward Surge Current 8.3ms Single half sine-wave superimposed on rated load (JEDEC Method)	I_{FSM}	400		A
Forward Voltage @ $I_F = 80\text{A}$	V_{FM}	1.08		V
Peak Reverse Current At Rated DC Blocking Voltage @ $T_A = 25^\circ\text{C}$	I_{RM}	200		nA
Typical Thermal Resistance Junction to Ambient	$R_{\theta JA}$	1.4		$^\circ\text{C/W}$
Operating and Storage Temperature Range	T_J, T_{STG}	-40 to +150		$^\circ\text{C}$

ORDERING INFORMATION

Product No.	Package Type	Shipping Quantity
C3520	6.2mm Cell Diode	5000 Units/Bottle
C3524	6.2mm Cell Diode	5000 Units/Bottle

1. Shipping quantity given is for minimum packing quantity only. For minimum order quantity, please consult the Sales Department.
2. **To order Lead Free version (with Lead Free finish), add "-LF" suffix to part number above. For example, C3520-LF.**

Won-Top Electronics Co., Ltd (WTE) has checked all information carefully and believes it to be correct and accurate. However, WTE cannot assume any responsibility for inaccuracies. Furthermore, this information does not give the purchaser of semiconductor devices any license under patent rights to manufacturer. WTE reserves the right to change any or all information herein without further notice.

WARNING: DO NOT USE IN LIFE SUPPORT EQUIPMENT. WTE power semiconductor products are not authorized for use as critical components in life support devices or systems without the express written approval.

Won-Top Electronics Co., Ltd.

No. 44 Yu Kang North 3rd Road, Chine Chen Dist., Kaohsiung, Taiwan

Phone: 886-7-822-5408 or 886-7-822-5410

Fax: 886-7-822-5417

Email: sales@wontop.com

Internet: <http://www.wontop.com>

We power your everyday.