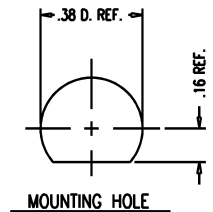
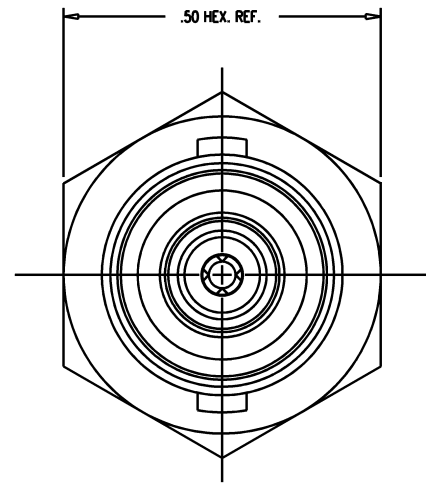
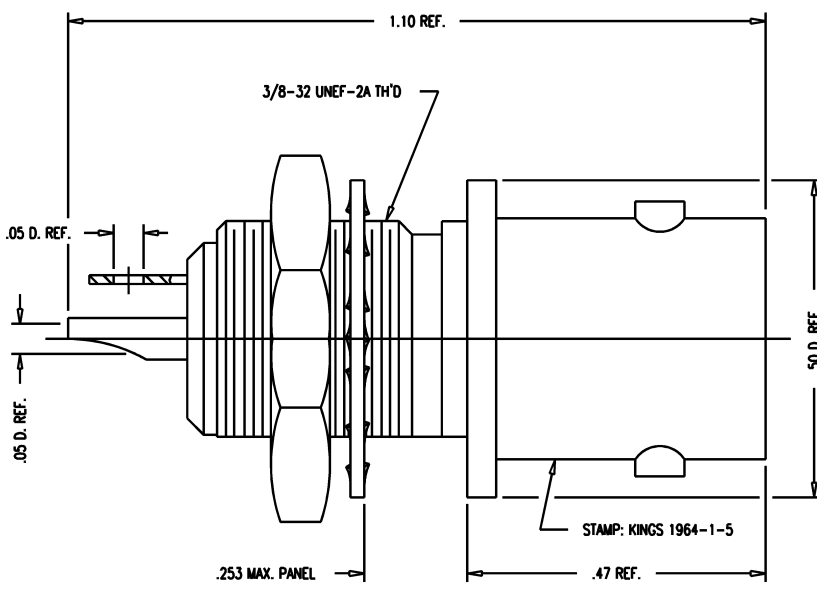


# GSD

1964-1-5



- NOTES:**
1. INTERFACE PER MIL-STD-348, FIG. 201-2 (AS APPLICABLE).
  2. MATERIALS:  
 INSULATORS: TEFLON, ASTM-D-4894  
 CENTER CONTACT: BER. COPPER, ASTM-B-196  
 LOCKWASHER: PHOSPHOR BRONZE, ASTM-B-103  
 ALL OTHER METAL PARTS: BRASS, ASTM-B16
  3. FINISHES:  
 CENTER CONTACT } HARD GOLD PLATE, PER MIL-G-45204  
 INTER. CONTACT }  
 ALL OTHER METAL PARTS: SILVER PLATE PER QQ-S-365
  4. ELECTRICAL CHARACTERISTICS:  
 WORKING VOLTAGE: 400 VRMS  
 FREQUENCY RANGE: DC TO 500 MHz

REVISIONS	
ISSUE	CHANGES
0	ER 33592 JCA 01/21/92
1	CN 36666 C KH 11/14/95

SCALE: 6:1
APPROX SURFACE AREA
USED ON
REF: ROCKWELL 13499 357-0543-010 REV. E
RECEPTACLE, BULKHEAD, TRB
DRAWN JCA 01/21/92
DESIGN LI 01/21/92
APPR. DATE

**KINGS**  
 ELECTRONICS CO., INC.  
 TUCKAHOE, NEW YORK 10707

1964-1-5

# GSD