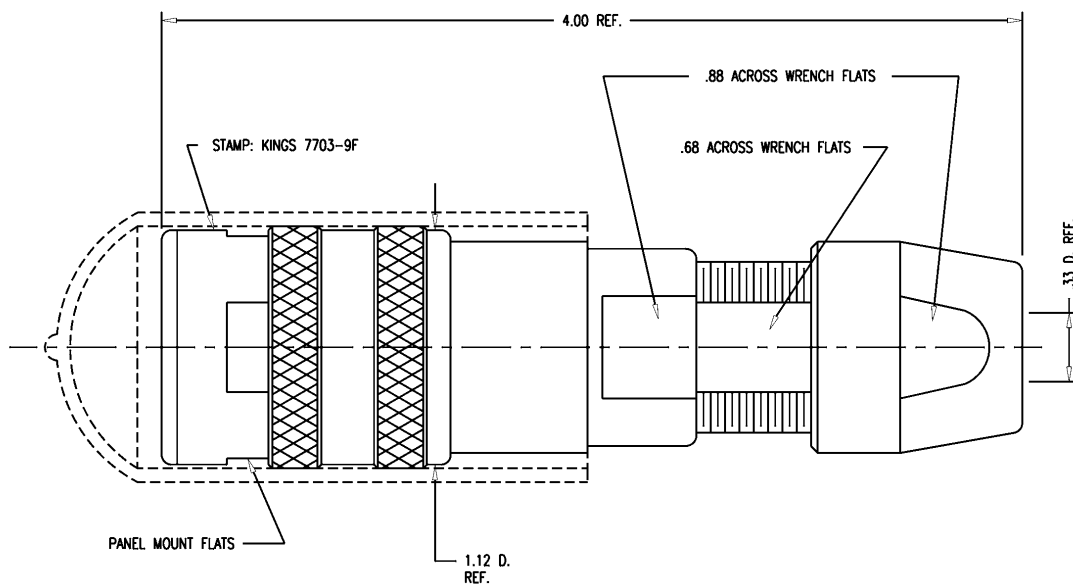


DASH NO.	M CODE	MADE FROM
----------	--------	-----------

GSD

7703-9F

REVISIONS	
ISSUE	CHANGES
0	ER 39303 DCT 7/21/5



NOTES:

- FOR USE WITH 760 CABLE GROUP.
- FOR CABLING INSTRUCTIONS SEE KAI-8010.
- FOR CRIMPING USE KTH-1000 AND KTH-2002.
- MATERIALS:
 - INSULATORS: TEFLON, ASTM-D-4894
 - GASKETS: SILICONE RUBBER, ZZ-R-765
 - CAP: VINYL
 - K-GRIP SLEEVE: COM'L BRONZE, ASTM-B-135
 - CENTER CONTACT
 - OUTER CONTACT SPRING } BER. COPPER, ASTM-B-196
 - INSERT
 - ALL OTHER METAL PARTS: BRASS, ASTM-B16

- FINISHES:
 - CENTER CONTACT } GOLD PLATE PER MIL-G-45204
 - OUTER CONTACT SPRING }
 - NUTS }
 - COLLET } KINGS TARNISH RESISTANT NICKEL FINISH (TR-5)
 - BODIES }
 - ALL OTHER METAL PARTS: SILVER PLATE PER QQ-S-365
- ELECTRICAL CHARACTERISTICS:
 - NOMINAL IMPEDANCE: 75 OHMS
 - FREQUENCY RANGE: DC-500 MHZ
 - VOLTAGE BREAKDOWN: CENTER CONDUCTOR/INNER GROUND: 1500 VRMS
 - INNER GROUND/OUTER GROUND: 500 VRMS

SCALE 2:1	
APPROX SURFACE AREA	
USED ON	
REF: 7703-9	
JK, TRI-LOC, SERIAL DIGITAL	
DRAWN DCT	DATE 7/21/5
DESIGN DCT	DATE 7/21/5
APPR.	DATE

GSD

KINGS
ELECTRONICS CO., INC.
ROCK HILL, SOUTH CAROLINA 29730

7703-9F