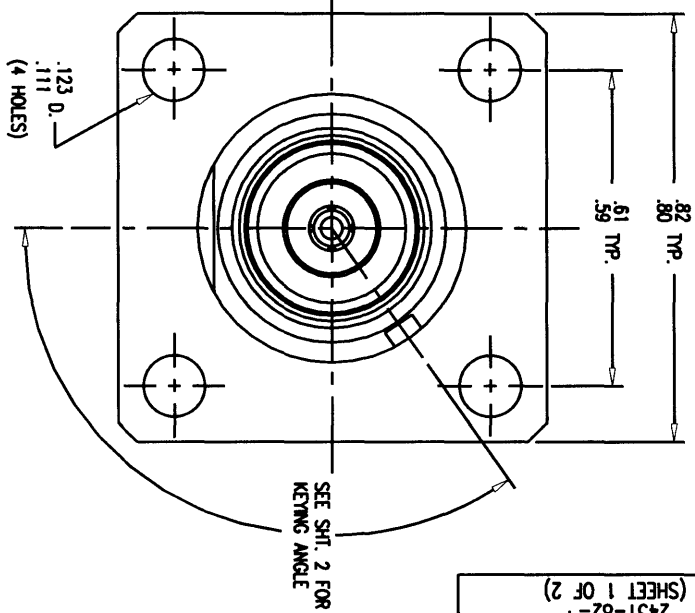
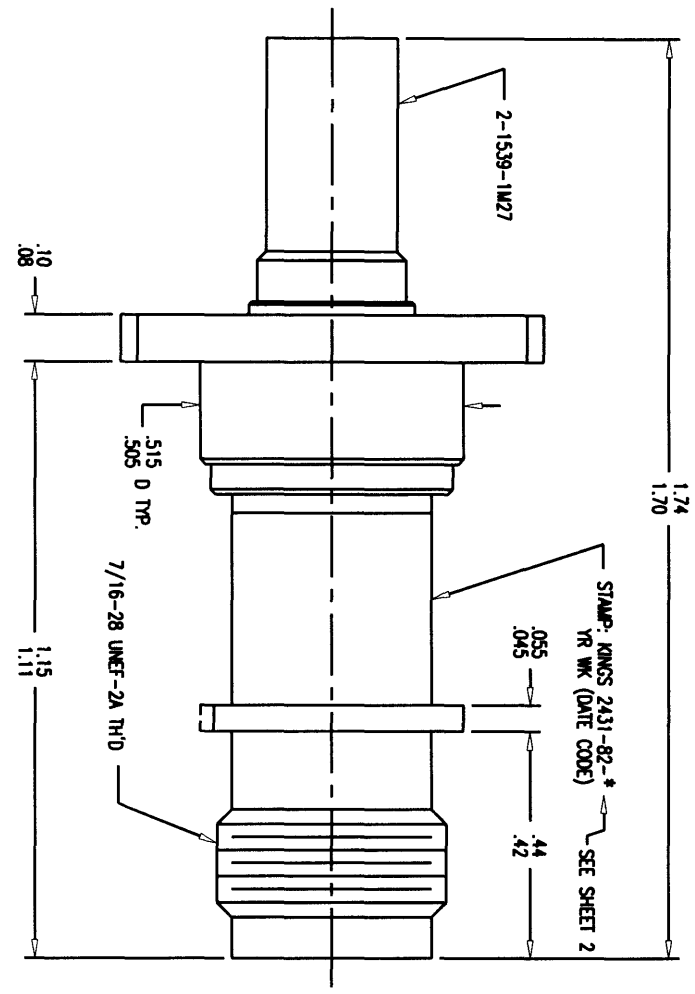


GSD

2431-82-
* (SHEET 1 OF 2)

REVISIONS	
ISSUE	CHANGES
0	ER 34256 JCA 11/03/92
1	CN 37820 E TML 08/17/99



NOTES:

1. FOR USE WITH BOEING S280WS03-2 & ADAMS RUSSELL FC14Z CABLE.
2. FOR CABLING INSTRUCTIONS SEE 3-546-1.
3. FOR CRIMPING USE DR. KIH-2161.
4. INTERFACE PER MIL-STD-348, FIG. 313-2.
5. CENTER CONTACT (1-3999-3M9) SUPPLIED UNASSEMBLED.
6. FOR USE WITH .25 MAX. PANEL.
7. MARK PACKAGE: KINGS 2431-82-
* YR WK (DATE CODE) SEE SHEET 2
8. MATERIALS:
INSULATORS: TEFLON, ASTM-D-1457
K-GRP SLEEVE: COMMERCIAL BRONZE, ALLOY 220
CENTER CONTACT: BER. COP., ASTM-B-196
ALL OTHER METAL PARTS: BRASS, ASTM-B16
9. FINISHES:
CENTER CONTACT: GOLD PLATE PER MIL-G-45204
ALL OTHER METAL PARTS: KINGS TARNISH RESISTANT FINISH (TR-5)
10. ELECTRICAL CHARACTERISTICS:
NOMINAL IMPEDANCE: 50 OHMS
FREQUENCY RANGE: DC TO 11 GHz
WORKING VOLTAGE: 500 VRMS

GSD

KAM2210

SCALE	4:1
APPROX SURFACE AREA	
WAS: E-17604	
USED ON	
NOT: BOEING	
JACK, PANEL, ISOLATED GROUND, KEYED, TNC	
DESIGN KIH	DATE 08/12/92
DESIGN JT	DATE 08/13/92
APPN.	DATE

KINGS
ELECTRONIC COMPONENTS
ROCK HILL, SOUTH CAROLINA 29720
2431-82-
* (SHEET 1 OF 2)

KINGS00113

GSD

KINGS PART NO.	KEYING ANGLE
2431-82-1	42°
2431-82-2	54°
2431-82-3	66°
2431-82-4	78°
2431-82-5	90°
2431-82-6	102°
2431-82-7	114°
2431-82-8	126°
2431-82-9	138°
2431-82-10	150°
2431-82-11	162°
2431-82-12	174°
2431-82-13	186°
2431-82-14	198°
2431-82-15	210°
2431-82-16	222°
2431-82-17	234°
2431-82-18	246°
2431-82-19	258°
2431-82-20	270°
2431-82-21	282°
2431-82-22	294°
2431-82-23	306°
2431-82-24	318°

2431-82-^{*}
(SHEET 2 OF 2)


ISSUE	REVISIONS
ISSUE	CHANGES
0	ER 34256 JCA 11/03/92
1	CN 37820 E TML 08/17/99

KAM2211	
---------	--

SCALE	1:1
APPROX SURFACE AREA	
USED ON	
REF:	

PART NO. & ANGLE TABLE	
DRAWN KH	DATE 08/13/92
DESIGN JT	DATE 08/14/92
APPR.	DATE

GSD

 ELECTRONICS CO., INC. ROCK HILL, SOUTH CAROLINA 29730	
2431-82- [*]	
(SHEET 2 OF 2)	