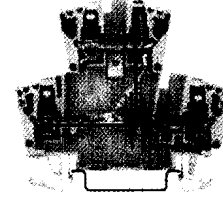
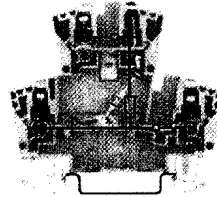
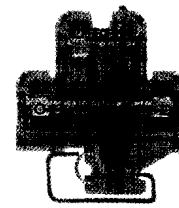
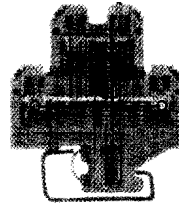


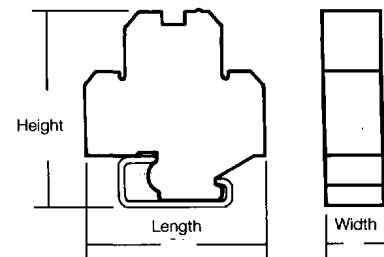
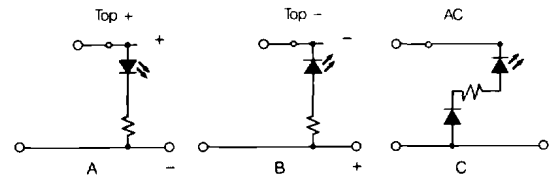
Terminal Blocks with Components
Indicator

DK 4 LD
WDK LD
Voltage indicators



Dimensions			
Length DK 4/WDK 2.5		mm	50 / 69
Height (incl. TS 32/TS 35x7.5)		mm	56.5 / 63
Terminal width (+0.2 assembly tolerance)		mm	6 / 5
Insulation stripping length		mm	9 / 10
Connection data			
Screw connection, flexible	DK 4		0.5...4mm ²
Screw connection, flexible	WDK 2.5		0.5...2.5mm ²
Wire size	DK 4		#22...12 AWG
Wire size	WDK 2.5		#26...12 AWG
VDE rated data			
Current of through-busbar			10A
Cross-section	DK 4		4mm ²
Cross-section	WDK 2.5		2.5mm ²
LED current			≤ 5mA

Voltage	Schematic	Type		Cat. No.	Type		Cat. No.
		TS 32			TS 35		
6 VDC	A	DK 4 LD 6/32		911967	WDK LD 6/35		911997
12 VDC	A	DK 4 LD 12/32		911968	WDK LD 12/35		911998
24 VDC	A	DK 4 LD 24/32		911969	WDK LD 24/35		911999
48 VDC	A	DK 4 LD 48/32		911504	WDK LD 48/35		912011
60 VDC	A	DK 4 LD 60/32		911971	WDK LD 60/35		912012
120 VDC	A	DK 4 LD 120/32		911972	WDK LD 120/35		912013
6 VDC	B	DK 4 LD 6/32		911973	WDK LD 6/35		912014
12 VDC	B	DK 4 LD 12/32		911949	WDK LD 12/35		912015
24 VDC	B	DK 4 LD 24/32		911951	WDK LD 24/35		912016
48 VDC	B	DK 4 LD 48/32		910277	WDK LD 48/35		912017
60 VDC	B	DK 4 LD 60/32		911974	WDK LD 60/35		912018
120 VDC	B	DK 4 LD 120/32		910646	WDK LD 120/35		912019
6 VAC	C	DK 4 LD 6/32		911975	WDK LD 6/35		912021
12 VAC	C	DK 4 LD 12/32		911976	WDK LD 12/35		912022
24 VAC	C	DK 4 LD 24/32		911977	WDK LD 24/35		912023
48 VAC	C	DK 4 LD 48/32		911978	WDK LD 48/35		912024
60 VAC	C	DK 4 LD 60/32		911979	WDK LD 60/35		912025
120 VAC	C	DK 4 LD 120/32		911981	WDK LD 120/35		912026
		AP		35926	WAP		105910



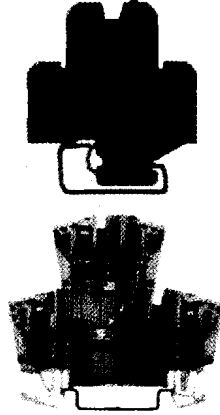
DK 4 LD
DC voltage indicator



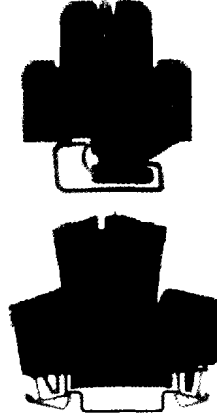
DK 4 LD
DC voltage indicator



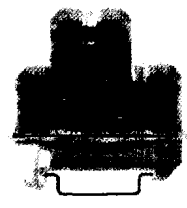
DK 4 LD
WDK 2.5 LD
AC voltage indicator



DK 4 GL
WDK 2.5 GL
AC voltage indicator



DK 4 Q GL
AC voltage indicator



Dimensions		Dimensions		Dimensions				Dimensions		Dimensions	
50	50	50	50	50 / 69	50 / 69	50 / 69	50 / 69	50 / 69	50 / 69	50	50
56.5	56.5	56.5	56.5	56.5 / 63	56.5 / 63	56.5 / 63	56.5 / 63	56.5 / 63	56.5 / 63	56.5	56.5
6	6	6	6	6 / 5	6 / 5	6 / 5	6 / 5	6 / 5	6 / 5	6	6
9	9	9	9	9 / 10	9 / 10	9 / 10	9 / 10	9 / 10	9 / 10	9	9
Connection data		Connection data		Connection data				Connection data		Connection data	
0.5...4mm ²	0.5...4mm ²	0.5...4mm ²	0.5...4mm ²	0.5...4mm ²	0.5...4mm ²	0.5...4mm ²	0.5...4mm ²	0.5...4mm ²	0.5...4mm ²	0.5...4mm ²	0.5...4mm ²
0.5...2.5mm ²	0.5...2.5mm ²	0.5...2.5mm ²	0.5...2.5mm ²	0.5...2.5mm ²	0.5...2.5mm ²	0.5...2.5mm ²	0.5...2.5mm ²	0.5...2.5mm ²	0.5...2.5mm ²	0.5...4mm ²	0.5...4mm ²
#22...12 AWG	#22...12 AWG	#22...12 AWG	#22...12 AWG	#22...12 AWG	#22...12 AWG	#22...12 AWG	#22...12 AWG	#22...12 AWG	#22...12 AWG	#22...12 AWG	#22...12 AWG
-	-	-	-	#26...12 AWG	#26...12 AWG	#26...12 AWG	#26...12 AWG	#26...12 AWG	#26...12 AWG	-	-
VDE rated data		VDE rated data		VDE rated data				VDE rated data		VDE rated data	
10A	10A	10A	10A	10A	10A	10A	10A	10A	10A	10A	10A
4mm ²	4mm ²	4mm ²	4mm ²	4mm ²	4mm ²	4mm ²	4mm ²	4mm ²	4mm ²	4mm ²	4mm ²
-	-	-	-	2.5mm ²	2.5mm ²	2.5mm ²	2.5mm ²	2.5mm ²	2.5mm ²	-	-
≤ 5mA	≤ 5mA	≤ 5mA	≤ 5mA	≤ 5mA	≤ 5mA	≤ 5mA	≤ 5mA	≤ 5mA	≤ 5mA	≤ 5mA	≤ 5mA
Voltage		Voltage		Voltage				Voltage		Voltage	
24VDC	24VDC	24VDC	24VDC	24VDC	24VDC	24VDC	24VDC	24VDC	24VDC	24VDC	24VDC
				24VAC	48VAC	115VAC	230VAC	115VAC	230VAC	230VAC	230VAC
Red	Green	Red	Green	Red	Red	Red	Red	Glow lamp	Glow lamp	Glow lamp	Glow lamp
Ordering data		Ordering data		Ordering data				Ordering data		Ordering data	
DK 4 LD/32	DK 4 LD/32	DK 4 LD/32	DK 4 LD/32	DK 4 LD/32	DK 4 LD/32	DK 4 LD/32	DK 4 LD/32	DK 4 GL/32	DK 4 GL/32		
21016	21036	20976	20996	49546	63286	58656	111146	56956	50956		
DK 4 LD/35	DK 4 LD/35	DK 4 LD/35	DK 4 LD/35	DK 4 LD/35	DK 4 LD/35	DK 4 LD/35	DK 4 LD/35	DK 4 GL/35	DK 4 GL/35	DK 4 Q GL/35	
21026	21046	20986	21006	39596	39606	39616	111156	39626	66316	112026	
	WDK 2.5 LD			WDK 2.5 LD	WDK 2.5 LD	WDK 2.5 LD	WDK 2.5 LD		WDK 2.5 GL		
	816143			801905	800632	801314			801384		
Accessories		Accessories		Accessories				Accessories		Accessories	
Type	Cat. No.	Type	Cat. No.	Type	Cat. No.	Type	Cat. No.	Type	Cat. No.	Type	Cat. No.
TS 32	12280	TS 32	12280	TS 32	12280	TS 32	12280	TS 32	12280	TS 32	12280
TS 35	38340	TS 35	38340	TS 35	38340	TS 35	38340	TS 35	38340	TS 35	38340
EWK 1	20616	EWK 1	20616	EWK 1	20616	EWK 1	20616	EWK 1	20616	EWK 1	20616
EW 35	38356	EW 35	38356	EW 35	38356	EW 35	38356	EW 35	38356	EW 35	38356
AP PA	35926	AP PA	35926	AP PA	35926	AP PA	35926	AP PA	35926	AP PA	35926
TSch 4	36336	TSch 4	36336	TSch 4	36336	TSch 4	36336	TSch 4	36336	TSch 4	36336
StB 8.5	21570	StB 8.5	21570	StB 8.5	21570	StB 8.5	21570	StB 8.5	21570	StB 8.5	21570
PS	18040	PS	18040	PS	18040	PS	18040	PS	18040	PS	18040
Q 2	33640	Q 2	33640	Q 2	33640	Q 2	33640	Q 2	33640	Q 2	33640
Q 3	33650	Q 3	33650	Q 3	33650	Q 3	33650	Q 3	33650	Q 3	33650
Q 4	33660	Q 4	33660	Q 4	33660	Q 4	33660	Q 4	33660	Q 4	33660
Q 10	36860	Q 10	36860	Q 10	36860	Q 10	36860	Q 10	36860	Q 10	36860
VL 2	44670	VL 2	44670	VL 2	44670	VL 2	44670	VL 2	44670	VL 2	44670
VH 10	44680	VH 10	44680	VH 10	44680	VH 10	44680	VH 10	44680	VH 10	44680
BS M 2.5x14	26680	BS M 2.5x14	26680	BS M 2.5x14	26680	BS M 2.5x14	26680	BS M 2.5x14	26680	BS M 2.5x14	26680
QB 2"	48270	QB 2"	48270	QB 2"	48270	QB 2"	48270	QB 2"	48270	QB 2"	48270
QB 3"	48280	QB 3"	48280	QB 3"	48280	QB 3"	48280	QB 3"	48280	QB 3"	48280
QB 4"	48290	QB 4"	48290	QB 4"	48290	QB 4"	48290	QB 4"	48290	QB 4"	48290
QB 75 bare	52640	QB 75 bare	52640	QB 75 bare	52640	QB 75 bare	52640	QB 75 bare	52640	QB 75 bare	52640
Insulation profile	52670	Insulation profile	52670	Insulation profile	52670	Insulation profile	52670	Insulation profile	52670	Insulation profile	52670