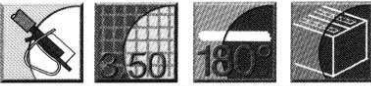
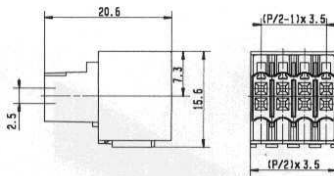
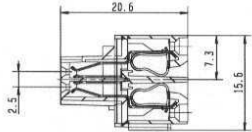
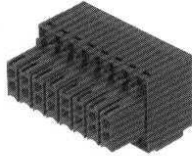


Minimate Range- S2L/B2L 3.5 with Gold-Plated Contacts



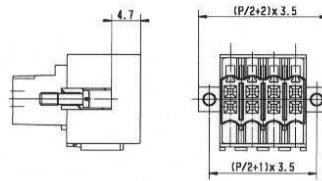
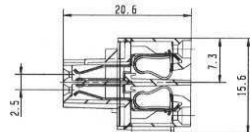
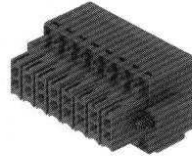
Socket blocks B2L 3.5

new



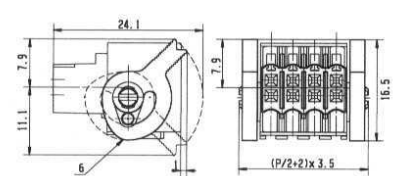
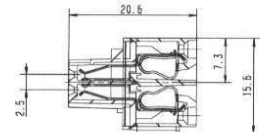
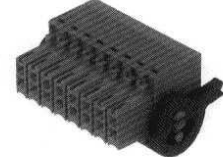
Socket blocks B2L 3.5F

new



Socket blocks B2L 3.5LH**

new



Technical data	VDE	UL	CSA
Rated voltage (V)	100*	150	50
Rated current (A)	7.5 ¹⁾	10	5
Wire size (mm ² /AWG)	1.0	28...16	28...16

*Pollution severity 3 / Overvoltage category III
Additional technical data see page 210

Technical data	VDE	UL	CSA
Rated voltage (V)	100*	150	50
Rated current (A)	7.5 ¹⁾	10	5
Wire size (mm ² /AWG)	1.0	28...16	28...16

*Pollution severity 3 / Overvoltage category III
Additional technical data see page 210

Technical data	VDE	UL	CSA
Rated voltage (V)	100*	150	50
Rated current (A)	7.5 ¹⁾	10	5
Wire size (mm ² /AWG)	1.0	28...16	28...16

*Pollution severity 3 / Overvoltage category III
Additional technical data see page 210

gold-plated contacts

Poles	Type	Part No.	Part No.	Qty.
6	B2L 3.5/6 AU	1757290000	1757390000	50
8	B2L 3.5/8 AU	1757300000	1757400000	50
10	B2L 3.5/10 AU	1757310000	1757410000	50
12	B2L 3.5/12 AU	1757320000	1757420000	50
14	B2L 3.5/14 AU	1757330000	1757430000	50
16	B2L 3.5/16 AU	1757340000	1757440000	50
18	B2L 3.5/18 AU	1757350000	1757450000	20
20	B2L 3.5/20 AU	1757360000	1757460000	20
22	B2L 3.5/22 AU	1757370000	1757470000	20
24	B2L 3.5/24 AU	1757380000	1757480000	20
26	B2L 3.5/26 AU	1765090000	1765150000	20
28	B2L 3.5/28 AU	1765100000	1765160000	20
30	B2L 3.5/30 AU	1765110000	1765170000	20
32	B2L 3.5/32 AU	1765120000	1765180000	20
34	B2L 3.5/34 AU	1765130000	1765190000	20
36	B2L 3.5/36 AU	1765140000	1765200000	20

Minimum order quantity applies for gold-plated B2L 3.5.
Please consult factory for details.

¹⁾ 36 poles = max. 6.8 A

Accessories	Page
Mounting	-
Marking	190
Coding	193
Miscellaneous	194, 201

gold-plated contacts

Poles	Type	Part No.	Part No.	Qty.
6	B2L 3.5/6F AU	1757490000	1757590000	50
8	B2L 3.5/8F AU	1757500000	1757600000	50
10	B2L 3.5/10F AU	1757510000	1757610000	50
12	B2L 3.5/12F AU	1757520000	1757620000	50
14	B2L 3.5/14F AU	1757530000	1757630000	50
16	B2L 3.5/16F AU	1757540000	1757640000	50
18	B2L 3.5/18F AU	1757550000	1757650000	20
20	B2L 3.5/20F AU	1757560000	1757660000	20
22	B2L 3.5/22F AU	1757570000	1757670000	20
24	B2L 3.5/24F AU	1757580000	1757680000	20
26	B2L 3.5/26F AU	1765210000	1765270000	20
28	B2L 3.5/28F AU	1765220000	1765280000	20
30	B2L 3.5/30F AU	1765230000	1765290000	20
32	B2L 3.5/32F AU	1765240000	1765300000	20
34	B2L 3.5/34F AU	1765250000	1765310000	20
36	B2L 3.5/36F AU	1765260000	1765320000	20

Minimum order quantity applies for gold-plated B2L 3.5.
Please consult factory for details.

¹⁾ 36 poles = max. 6.8 A

Accessories	Page
Mounting	integrated in product
Marking	190
Coding	193
Miscellaneous	194, 201

gold-plated contacts

Poles	Type	Part No.	Part No.	Qty.
6	B2L 3.5/6LH AU	1757690000	1757790000	50
8	B2L 3.5/8LH AU	1757700000	1757800000	50
10	B2L 3.5/10LH AU	1757710000	1757810000	50
12	B2L 3.5/12LH AU	1757720000	1757820000	50
14	B2L 3.5/14LH AU	1757730000	1757830000	50
16	B2L 3.5/16LH AU	1757740000	1757840000	50
18	B2L 3.5/18LH AU	1757750000	1757850000	20
20	B2L 3.5/20LH AU	1757760000	1757860000	20
22	B2L 3.5/22LH AU	1757770000	1757870000	20
24	B2L 3.5/24LH AU	1757780000	1757880000	20
26	B2L 3.5/26LH AU	1765330000	1765390000	20
28	B2L 3.5/28LH AU	1765340000	1765400000	20
30	B2L 3.5/30LH AU	1765350000	1765410000	20
32	B2L 3.5/32LH AU	1765360000	1765420000	20
34	B2L 3.5/34LH AU	1765370000	1765430000	20
36	B2L 3.5/36LH AU	1765380000	1765440000	20

Minimum order quantity applies for gold-plated B2L 3.5.
Please consult factory for details.

**Use with S2L 3.5F flange version
¹⁾ 36 poles = max. 6.8 A

Accessories	Page
Mounting	-
Marking	190
Coding	193
Miscellaneous	194, 201

Minimate Range S2L/B2L 3.5