

Wire-Tap Branch Connectors, 3-Pole with IDC / CAGE CLAMP® Connections, Female Sockets with Automatic Cutting of the "Live" Conductor

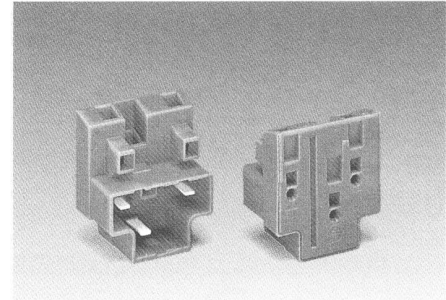
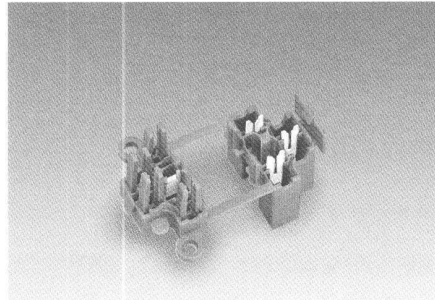
0.75 – 1.5 mm² / AWG 18 – 16 fine-strand.
max. diameter of insulation 3.5 mm
400 V/6 kV/3, 10 A ① | 600 V, 10 A ②
250 V/4 kV/3, 10 A ② | 300 V, 10 A ③

* ① ② ③ CCA ④ P ⑤

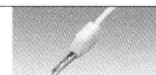
0.08 – 2.5 mm² / AWG 28 – 14
solid, stranded and fine-stranded**
400 V/6 kV/3, 10 A ① | 600 V, 10 A ②
250 V/4 kV/3, 10 A ② | 300 V, 10 A ③

* ① ② ③ CCA ④ P ⑤

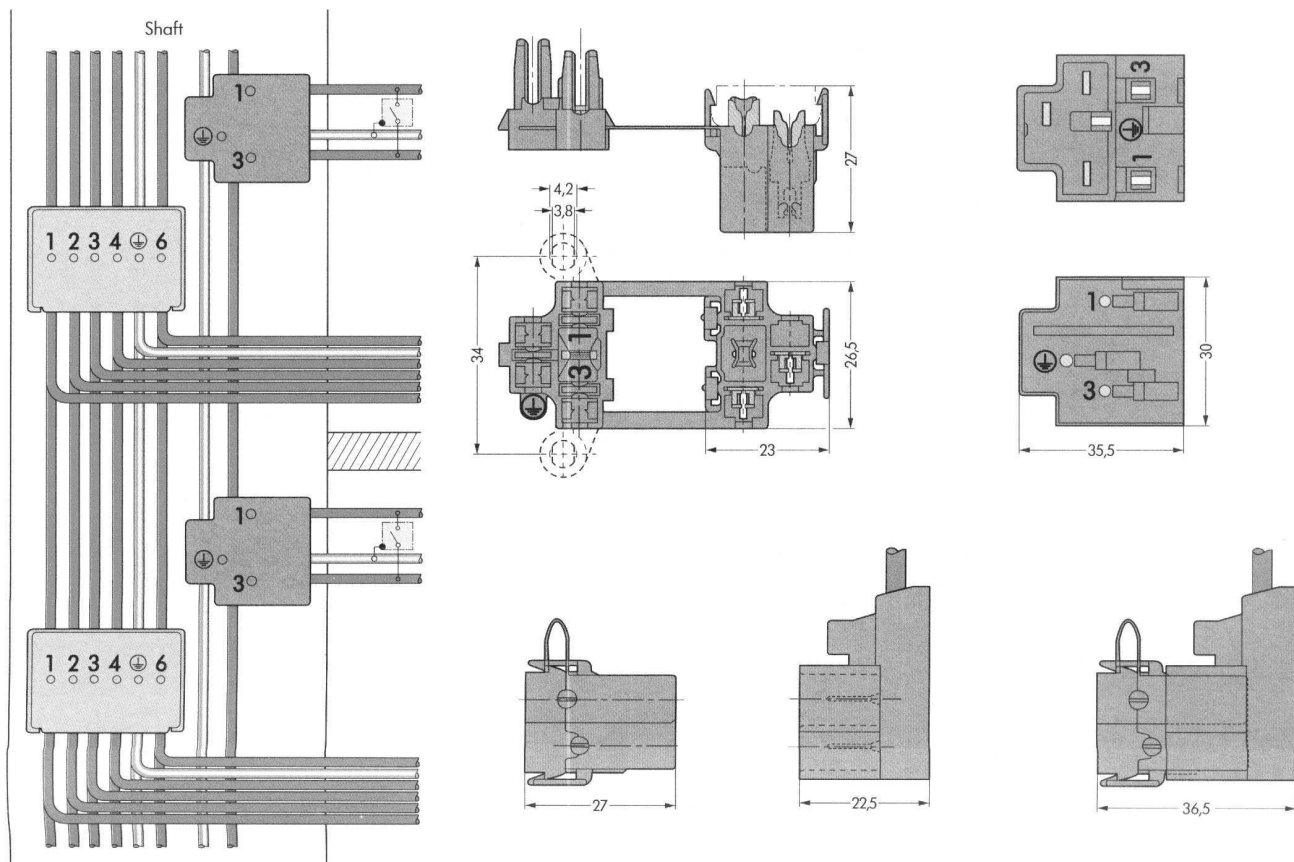
8 – 9 mm / 0.33 in



- ① Between potential/potential
② Between potential/surface

Description	No. of poles	Item-No.	Pack.-unit pcs	No. of poles	Item-No.	Pack.-unit pcs
Wire-tap branch connector, 3-pole Example: in elevator shaft technology. Allows the tapping of individual conductors by a female connector at any place without stripping. When the female connector is mated (using channel lock pliers) all connections are made without stripping. In case of the 3-pole orange version additionally the "live" conductor is automatically cut. This may then be used for switching functions. Example: for door switches. Plug connections are made using CAGE CLAMP®.	Female socket with IDC connection and automatic cutting of the "live" conductor 2 x live, 1 x protective ground (earth), orange 3	730-103	50	Plug with CAGE CLAMP®, 2 x live, 1 x protective ground (earth), orange 3	730-113	50
	Female socket with fixing flanges 3	730-123	50	 Test plug, 2.3 mm/0.091 in Ø yellow 210-137 50 (5 x 10) with cable 500 mm/1'7.7"		

Dimensions (in mm)



* For further approvals with corresponding ratings see pages 10.3 ff.

** Connectable cross section