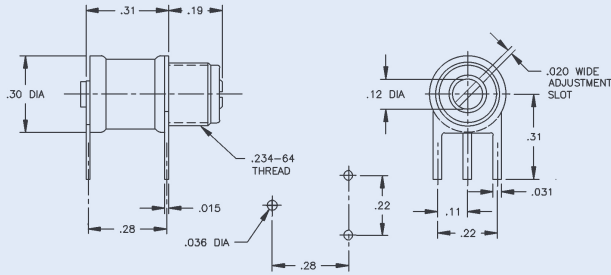


# "A" & "E" SERIES - Air Trimmer Capacitors

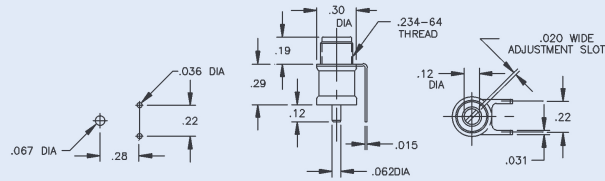
**FIG. 1**



**FIG. 1**

Part Number	MIL Designation	Capacitance (pF)	
		From Below	To Above
AP5		1.0	5.0
AP10	PC18L100	1.0	10.0
AP14	PC18L140	1.0	14.0
EP5		0.8	5.0
EP10		0.8	10.0
EP14		0.8	14.0

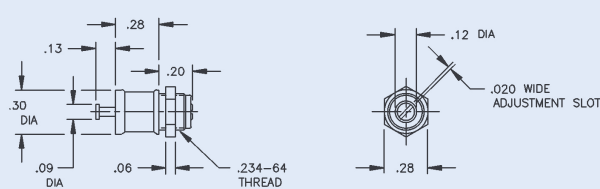
**FIG. 2**



**FIG. 2**

AF5		1.0	5.0
AF10	PC19L100	1.0	10.0
AF14	PC19L140	1.0	14.0
EF5		0.8	5.0
EF10		0.8	10.0
EF14		0.8	14.0

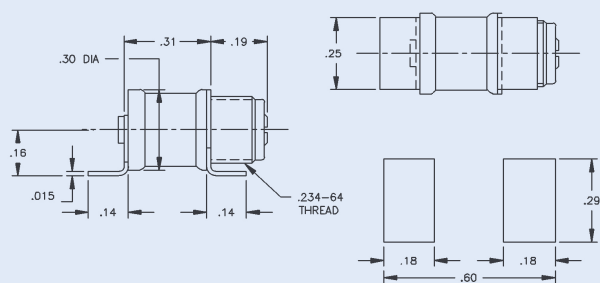
**FIG. 3**



**FIG. 3**

AT5		1.0	5.0
AT10	PC47L100	1.0	10.0
AT14	PC47L140	1.0	14.0
ET5		0.8	5.0
ET10		0.8	10.0
ET14		0.8	14.0

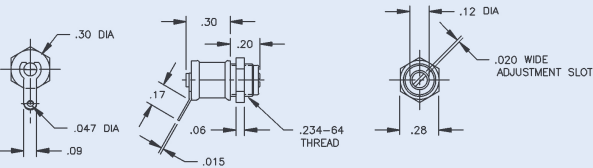
**FIG. 4**



**FIG. 4**

AJ5		1.0	5.0
AJ10	PC46L100	1.0	10.0
AJ14	PC46L140	1.0	14.0
EJ5		0.8	5.0
EJ10		0.8	10.0
EJ14		0.8	14.0

**FIG. 5**

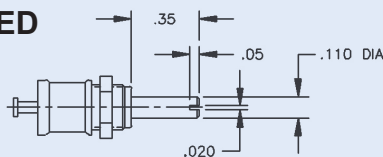


**FIG. 5**

AT5L		1.0	5.0
AT10L		1.0	10.0
AT14L		1.0	14.0
ET5L		0.8	5.0
ET10L		0.8	10.0
ET14L		0.8	14.0

NOTE: All bushing threads are .234"-64

## EXTENDED METAL SHAFT

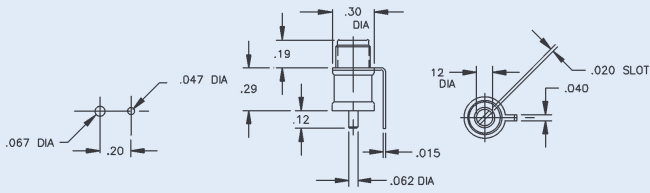


## EXTENDED SHAFT OPTIONS

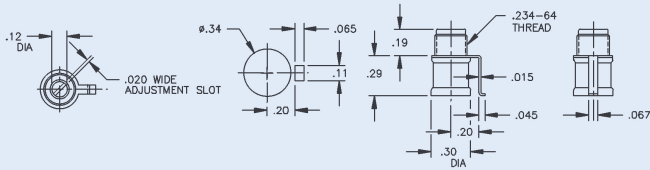
Extended Metal Shaft: Add "E" to Part Number, i.e., AT10E.

Extended Plastic Shaft: Add "EI" to Part Number, e.i., EF10EI. (Same as metal shaft except .44" by .16" dia.)

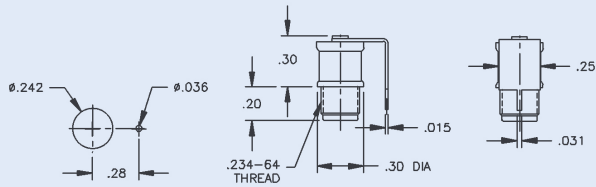
**FIG. 6**



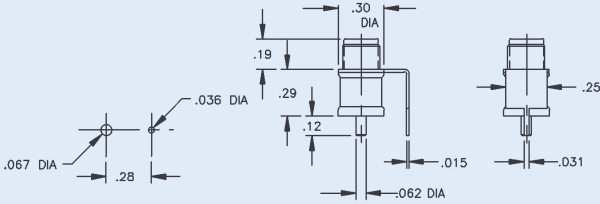
**FIG. 7**



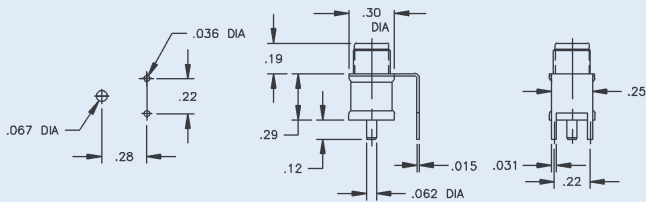
**FIG. 8**



**FIG. 9**

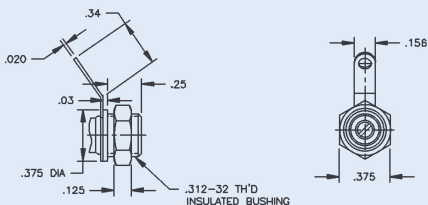


**FIG. 10**



**INSULATED BUSHING**

Insert "I" in Part Number, i.e., AIT10L



Part Number	Old Part Number	Capacitance (pF)	
		From Below	To Above

**FIG. 6**

AB5		1.0	5.0
AB10	V3116	1.0	10.0
AB14	V3117	1.0	14.0
EB5		0.8	5.0
EB10	V5051	0.8	10.0
EB14	V5105	0.8	14.0

**FIG. 7**

AM5		1.0	5.0
AM10		1.0	10.0
AM14		1.0	14.0
EM5		0.8	5.0
EM10		0.8	10.0
EM14		0.8	14.0

**FIG. 8**

AC5		1.0	5.0
AC10	V3067	1.0	10.0
AC14	V3066	1.0	14.0
EC5		0.8	5.0
EC10	V5086	0.8	10.0
EC14	V5139	0.8	14.0

**FIG. 9**

AD5		1.0	5.0
AD10	V3168	1.0	10.0
AD14	V3228	1.0	14.0
ED5		0.8	5.0
ED10	V5087	0.8	10.0
ED14	V5143	0.8	14.0

**FIG. 10**

AE5		1.0	5.0
AE10	V3239	1.0	10.0
AE14	V3193	1.0	14.0
EE5		0.8	5.0
EE10	V5146	0.8	10.0
EE14	V5147	0.8	14.0

<u>IN</u>	0.015	0.020	0.03	0.031	0.036	0.40	0.047	0.05	0.06	0.062	0.067	0.09
<u>MM</u>	0.38	0.51	0.76	0.79	0.91	1.02	1.19	1.27	1.52	1.57	1.70	2.29
<u>IN</u>	0.11	0.12	0.125	0.13	0.14	0.16	0.17	0.19	0.20	0.22	0.242	0.25
<u>MM</u>	2.79	3.05	3.18	3.30	3.56	4.06	4.32	4.83	5.08	5.59	6.15	6.35
<u>IN</u>	0.28	0.29	0.30	0.31	0.34	0.48						
<u>MM</u>	7.11	7.37	7.62	7.87	8.64	12.19						