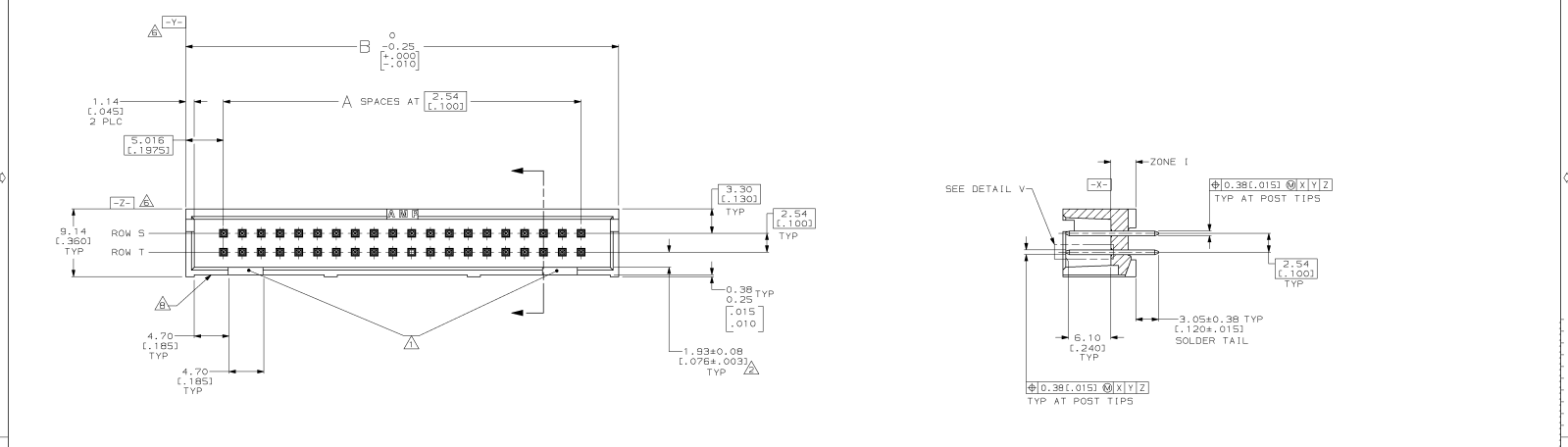
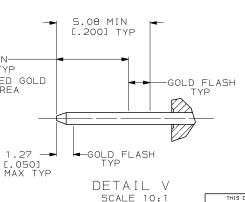


REV	DATE	DESCRIPTION	DATE	APPD
D	11-25-93	RLSE PER NFR 4683 WAS 91-5460-96-1	11-25-93	—
A	ABOVED -7 PER EC 0020-566-95	06/07/95	11-25-93	JK
B	REV PER EC 0020-0771-95	07/06/95	11-25-93	JK
C	REV PER EC 0020-0825-95	07/06/95	11-25-93	JK
D	REV PER EC 0020-857-95	08/01/95	11-25-93	JK
E	REV PER EC 0020-321-96	08/08/96	11-25-93	DM
F	085 -7 PER EC 0410-202-96	10/08/97	11-25-93	JGH
G	REV PER EC 0410-56-97	06/01/97	11-25-93	JGH



- DOUBLE BAR POLARIZATION. DIMENSION APPLIES AT THE INTERSECTION OF THE POST AND HOUSING.
- CENTER POLARIZATION SLOT.
- HOUSING: NYLON, BLACK; POSTS: PHOSPHOR BRONZE.
- POSTS: 0.38µm (.000015) MIN GOLD ON LOCALIZED GOLD PLATE AREA, 2.54µm (.000100) MIN TIN-LEAD ON SOLDER TAIL, ALL OVER 1.27µm (.000050) MIN NICKEL.
- DATUMS Y AND Z APPLY IN ZONE 1.
- NUMBER 1 POSITION INDICATOR.
- OPTIONAL AMP IDENTIFICATION NUMBER (DATE CODE). LOCATION APPROXIMATELY WHERE SHOWN.



OBSOLETE	58.42 (2.300)	19	11	NONE	40	111782-B
	50.80 (2.000)	16	NONE	16	34	111782-7
	B	A	ROW T	ROW S	NO OF POSN	PART NUMBER
			POST OMITTED			

DO NOT SCALE PRINT, UNLESS SPECIFIED.	DR 3-25-93 C. BRENNAN	NAME	AMP Incorporated Harrisburg, PA 17105-3608
DIMENSIONS IN mm (INCHES)	GRK 3-29-93 R. STORRE	DATE	11-25-93
TOLERANCES IN mm (INCHES)	APPD 3-30-93 R. HOFFMAN	PRODUCT SPEC	108-4001B
3 DEC (0.001) UNLESS OTHERWISE SPECIFIED	MATERIAL	APPLICATION SPEC	108-4001B
FINISH	SIZE	CAGE CODE	D 00779
WEIGHT	SCALE	DRAWING NO	111782