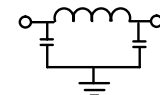
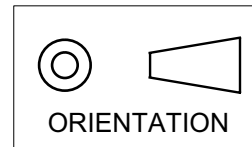


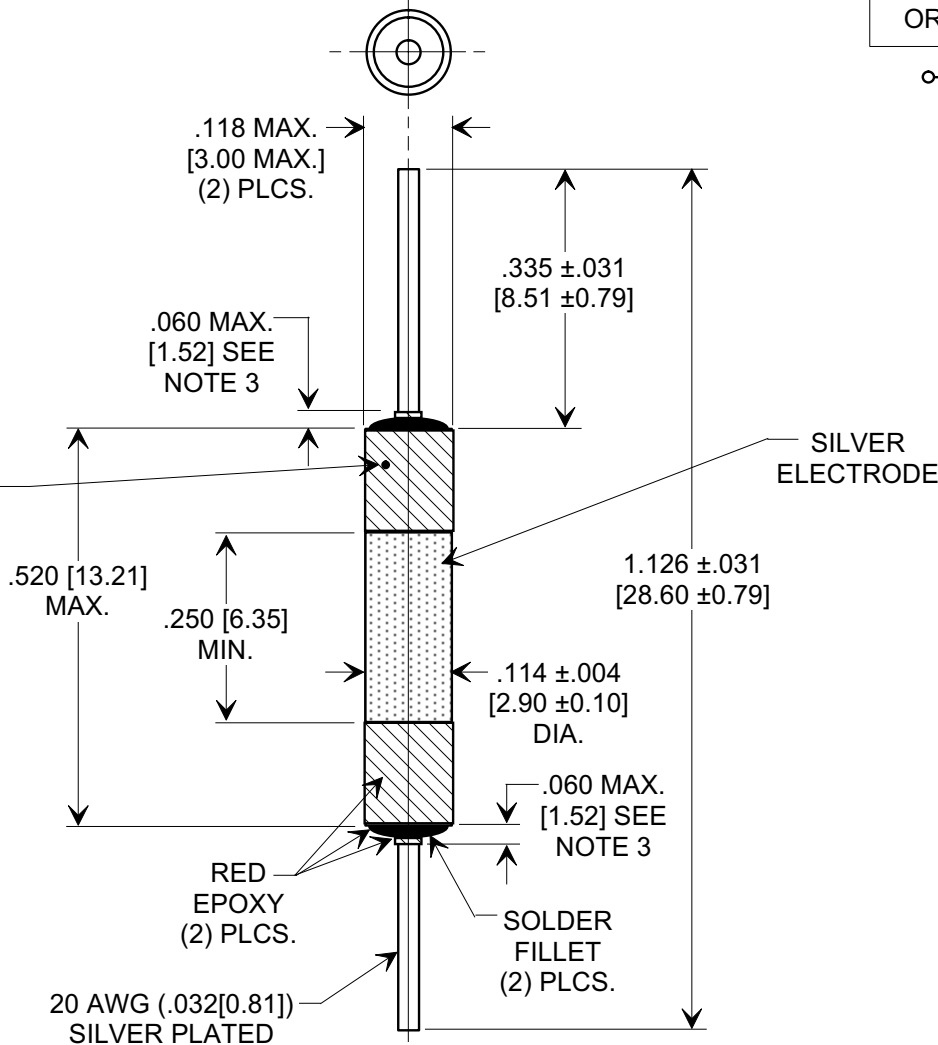
MARKETING SALES DRAWING

DIMENSIONS IN INCHES - DO NOT SCALE THIS DRAWING
DIMENSIONS IN METRIC - []

Electrical Testing
 per Tusonix standard
 test plans and Mil-Std-202
 Test Methods.



GREEN DOT FOR
 RoHS PART ONLY
 TYPICAL LOCATION.



NOTES:

1. LEAD END AT $.335$ [8.51] DIMENSION TO BE CONCENTRIC TO TUBE WITHIN $.020$ [0.51].
2. TEST VOLTAGE: 1000 VAC, 60Hz, 1 MINUTE DURATION.
3. RED EPOXY OVER INSULATION BANDS, SOLDER FILLET AND UP THE LEAD $.060$ [1.52] MAXIMUM FROM THE END OF TUBE REQUIRED TO PASS 1000 VAC FLASH TEST REQUIREMENT.
4. TUSONIX STANDARD PART NUMBER: 4101-049.
 TUSONIX RoHS COMPLIANT PART NUMBER: 4101-049 LF.
 CUSTOMER MUST SPECIFY STANDARD OR RoHS PART NUMBER WHEN ORDERING.
5. PART MARKING: STANDARD HAS NO MARKING. RoHS PART: GREEN DOT.

CAP.(pf)	WORKING VOLTAGE	DC CURRENT	MINIMUM NO LOAD INSERTION LOSS (dB) AT 25°C PER MIL-STD-220				
	+85 °C		2 MHz	5 MHz	10 MHz	100 MHz	1-10 GHz
3500/7000	350 VDC	5A	3	5	10	50	50

X-2015 Rev-0

REVISION RECORD		--TOLERANCES-- Unless Otherwise Specified		Title	
0	Original Release C.O.	DECIMAL ±	NOTED	EMI FILTER	
1	970731-10 REMOVED MIN. FROM CAP. S.M. 01-27-98	ANGLES ±		Drawn	S. M. 06-13-97
2	19980121-6-06 10 MHz WAS 7. S.M. 08-04-04	TUSONIX TUCSON, ARIZONA		Approved	B. Mc. 06-13-97
3	20040804-1-01 DIM. 114 ADDED & DIM. 118 MOVED. S.M. 08-10-04			A	
4	20040809-3-03 ADDED NOTES 4 & 5, IR & DWW. S.M. 09-15-05				
5	20050829-1-22				