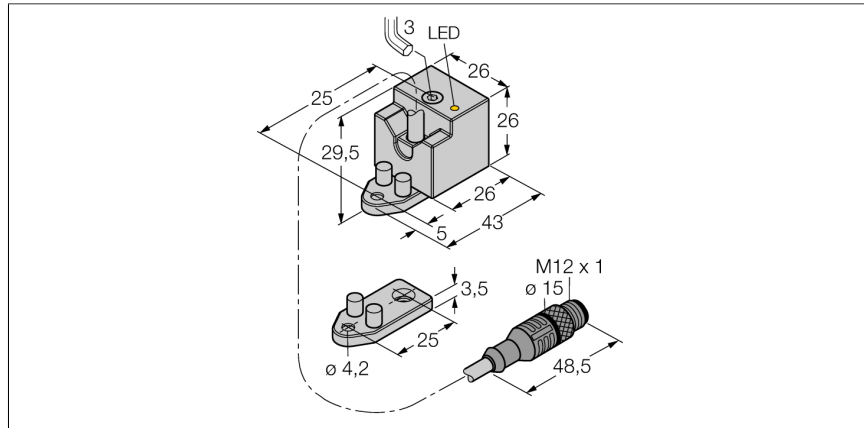
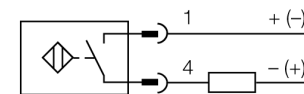


**Inductive sensor
with extended temperature range
Bi10-QN26-AD4X-0,15XOR-RS4.23/S100-S1589 W/BF**



- Rectangular, height 26 mm
- Variable orientation of active face in 3 directions
- Plastic, PBT-GF30-V0
- High luminance LED
- Coated housing suited for welding facilities
- For temperatures up to +100 °C
- DC 2-wire, 10...65 VDC
- NO contact
- Cable with connector

Wiring diagram

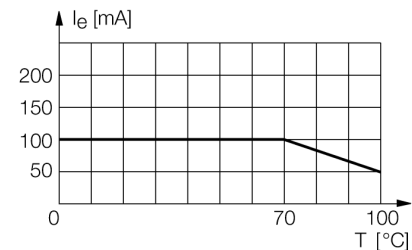


Type code	Bi10-QN26-AD4X-0,15XOR-RS4.23/S100-S1589 W/BF
Ident no.	4470229
Rated operating distance Sn	10 mm
Mounting condition	flush
Assured sensing range	≤ (0,81 x Sn) mm
Correction factors	St37 = 1; Al = 0.3; stainless steel = 0.7; Ms = 0.4
Repeatability	≤ 2 % of full scale
Temperaturdrift	10 %
Hysteresis	≤ ± 20 %, ≥ +70 °C
Ambient temperature	1...15 % -25...+100 °C
Operating voltage	10...65VDC
Residual ripple	≤ 10 % U _{is}
DC rated operational current	≤ 100 mA
Rated operational current	see derating curve
Residual current	≤ 0.6 mA
Rated insulation voltage	≤ 0.5 kV
Short-circuit protection	yes/ cyclic
Voltage drop at I _s	≤ 5 V
Smallest operating current I _m	≤ 3 mA
Switching frequency	0.5 kHz
Design	rectangular, QN26
Dimensions	43x 26x 26 mm Variable orientation of active face in 3 directions
Housing material	Plastic, PBT, weldguard coated
Connection	Cable with connector, M12 x 1
Cable quality	4.4 mm, orange, Lif12Y11X, PUR, 0.15 m
Cable cross section	2 x 0.34 mm ²
Vibration resistance	55 Hz (1 mm)
Shock resistance	30 g (11 ms)
Protection class	IP67
Switching state	• yellow
Included in scope of supply	turning angle, screw M4 x 30 acc. to DIN 6912

Functional principle

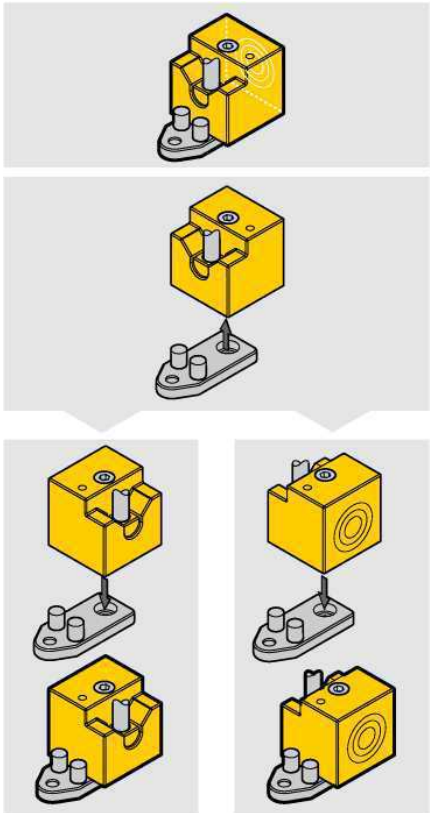
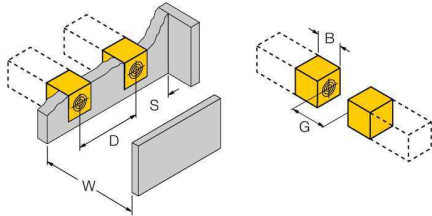
Inductive sensors detect metal objects contactless and wear-free. For this purpose they use a high-frequency electromagnetic AC field that interacts with the target. The sensors hosting a ferrite core coil generate the AC field through an LC resonant circuit.

derating curve



**Inductive sensor
with extended temperature range
Bi10-QN26-AD4X-0,15XOR-RS4.23/S100-S1589 W/BF**

Distance D	3 x B
Distance W	3 x Sn
Distance S	1.5 x B
Distance G	6 x Sn
Distance N	1 x B
<hr/>	
Width of the active face B	26 mm



Screwed on acc. to
DIN 6912 Allen screw
M4 x 30 included in scope of supply.