

DASH NO	CABLES ACCOMMODATED	A HEX	B DIM	C MAX	ASSEMBLE PER
-201	M17/178-00002	.344	.030	1.70	TAI-168
-202	TWC-78-1				
-203	TWC-124-1A				
-204	10502 RAYCHEM				
-205	TWAC-78-1F2				
-206	782800130 RAYCHEM				
-207	B3310 BELDEN				
-208	202-3927 MICRODDT				
-209	202-3942 MICRODDT				
-210	B451 BELDEN				
-211	202-3934 MICRODDT				
-212	2524E0114 RAYCHEM				
-213	TWC-78-2				
-214	TWC-124-2				
-215	BL962, TIMES				
-216	BL1242, TIMES				
-217	GC875T24H GRUMMAN				
-218	EDP22188B, RAYCHEM				
-219	2526D1114 RAYCHEM				
-220	GC875RR1, GRUMMAN				
-221	10614, RAYCHEM				
-222	10613, RAYCHEM				
-223	HMS2-1149, HUGHES				
-224	TWCP-124-3				
-225	PS865PL, PRIME STOCK				
-301	GC875G1, GRUMMAN				
-302	GC875G1, GRUMMAN				
-303	7528A5314, RAYCHEM				
-304					
-305	M17/177-00001, THERMATICS	1.70			
-306	TRC-50-2				
-307	M17/134-00002				
-308	TRC-75-1				
-309	TRC-75-2				
-309	TRC-50-1				

6. FOR TOOL CRIMP CONNECTOR QUALIFIED TO MIL-C-49142, SEE DRAWING 3-0285 (PL75MC)

1 SHRINKABLE STRAIN RELIEF AND/OR SHRINKABLE SEALING SLEEVE SUPPLIED LOOSE AS FOLLOWS:

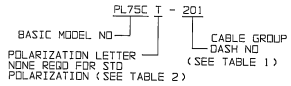
c. CABLE GROUPS -201 THROUGH -210, -217 THROUGH -223, -301, -302, -303, -305, -307 & -309

1 SHRINKABLE STRAIN RELIEF (1.00 LONG)  
1 SHRINKABLE SEALING SLEEVE (1.25 LONG)

b. CABLE GROUPS -211 THROUGH -216, -224, -225, -306 & -308

1 SHRINKABLE STRAIN RELIEF (1.75 LONG)

4. EXAMPLE OF COMPLETE MODEL NO:



3. CONCENTRIC TWINAX/TRIAX 3-LUG TRB, FULL CRIMP CABLE PLUS

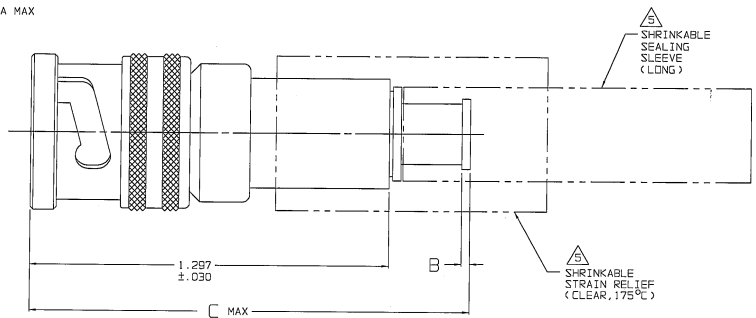
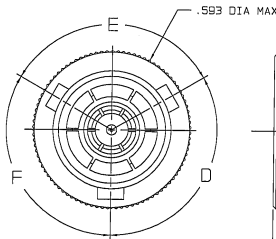
2. FINISH: TFS-1A (NICKEL)

1. ALL DIMENSIONS ARE IN INCHES

DATA CONTAINED IN THIS DOCUMENT IS PROPRIETARY TO TROMPETER ELECTRONICS, INC. AND SHALL NOT BE DISCLOSED OR REPRODUCED FOR PUBLICATION OR RECORD, BY ANY MEANS, WITHOUT PERMISSION OF TROMPETER ELECTRONICS, INC.

REVISIONS		310-0054	SH 1
REV	DESCRIPTION	DATE	APPROVED
AD	REVISED PER ECO 14825	11/26/02	<i>RM</i>

RED INDICATES ORIGINAL



-202 SHOWN



POLARIZATION CHART				
KEY LETTER	D DEGREES	E DEGREES	F DEGREES	COLOR BAND
NONE	120°	120°	120°	NONE
T	100°	150°	110°	RED
U	120°	130°	110°	ORANGE
V	115°	130°	115°	YELLOW
W	125°	110°	125°	GREEN
X	130°	100°	130°	BLUE
Y	110°	140°	110°	VIOLET
Z	100°	160°	100°	GRAY
S	135°	135°	90°	WHITE

DESIGNER: DRAWING NO. PL75C T	DATE: 11-22-02	SCALE: 1:1	
CHECKED: T. KL	DATE: 11-23-02	SCALE: 1:1	
TITLE: PL75C T/UV W/X/Y/Z/S			SIZE: CASE CODE B 14949 DRAWING NO: 310-0054 SCALE: NONE DATE: 4/10/84 SHEET: 1C
NEXT ASSY: 310-0054AD DO NOT SCALE DIM			