

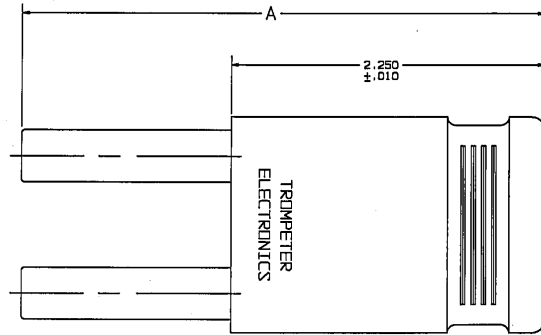
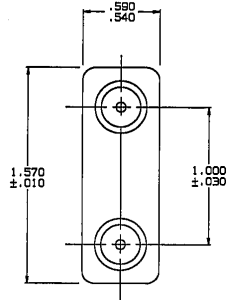
RED INDICATES ORIGINAL

DATA CONTAINED IN THIS DOCUMENT IS PROPRIETARY TO TROMPETER ELECTRONICS, INC. AND SHALL NOT BE DISCLOSED, COPIED OR REPRODUCED IN ANY MANNER WITHOUT EXPRESS WRITTEN PERMISSION.

REVISONS			1-0388	SH 1	
REV	ED	DESCRIPTION	DWN	APPROVED	DATE
H	12880	CHANGED CASE COLOR TO GREEN/BLACK FOR -7 SEE ECD	R L	<i>[Signature]</i>	12/13/98

DASH NO	MODEL NO	IMPEDANCE VALUE	CASE COLOR	A DIM
-1	LPL-50	50 OHMS	GREEN	3.765
-W1	LPLW-50			3.458
-2	LPL-75	75 OHMS	VIOLET	3.765
-W2	LPLW-75			3.458
-3	LPL-93	93 OHMS	WHITE	3.765
-W3	LPLW-93			3.458
-4	LPL-4		BLACK	3.765
-W4	LPLW-4		3.458	
-5	LPL-5		RED	3.765
-W5	LPLW-5		3.458	
-6	LPL-6		GRAY	3.765
-W6	LPLW-6		3.458	
-7	LPL-7		GREEN/BLACK	3.765

INCH	MM
.010	0.25
.030	0.76
.540	13.72
.590	14.98
1.000	25.40
1.570	39.88
2.250	57.15
3.458	87.83
3.765	95.83



-W2, -W4-75, -W5-75 & -W6-75 SHOWN

- 50 Ω DOUBLE SHIELDED RG223-N17/167-00001
- IMPEDANCE VALUE OF -4 THRU -W6, MAY BE -50, -75, OR -93 (OHMS). EXAMPLE: 1-0338-4-50, -4 -75, ETC
- PREFIX *W* DENOTES AT&T TYPE. ALL OTHERS RCA
- 3. COAXIAL LARGE SPACING STANDARD SIZE LOOPING PLUG
- 2. FINISH: BARRELS, TFS-1A OR TFS-1U (NICKEL) CASE (SEE CHART)
- 1. ALL DIMENSIONS ARE IN INCHES

QTY	DESCRIPTION	PART NUMBER	ITEM
TOL UNLESS SPECIFIED +.001 ± -.000 ±.030 X.0000 ANGLES	TROMPETER ELECTRONICS, INC.	LPL / LPLW	
155-0572	DWN <i>[Signature]</i> 12/21/98	MATERIAL	CODE IDENT
155-0552	ENGR <i>[Signature]</i> 12-22-98	14949	DRAWING NO.
NEXT ASSY	APPR <i>[Signature]</i> 12-22-98	SCALE: 1/1	DATE 6-12-99
			SHEET 1 OF 2