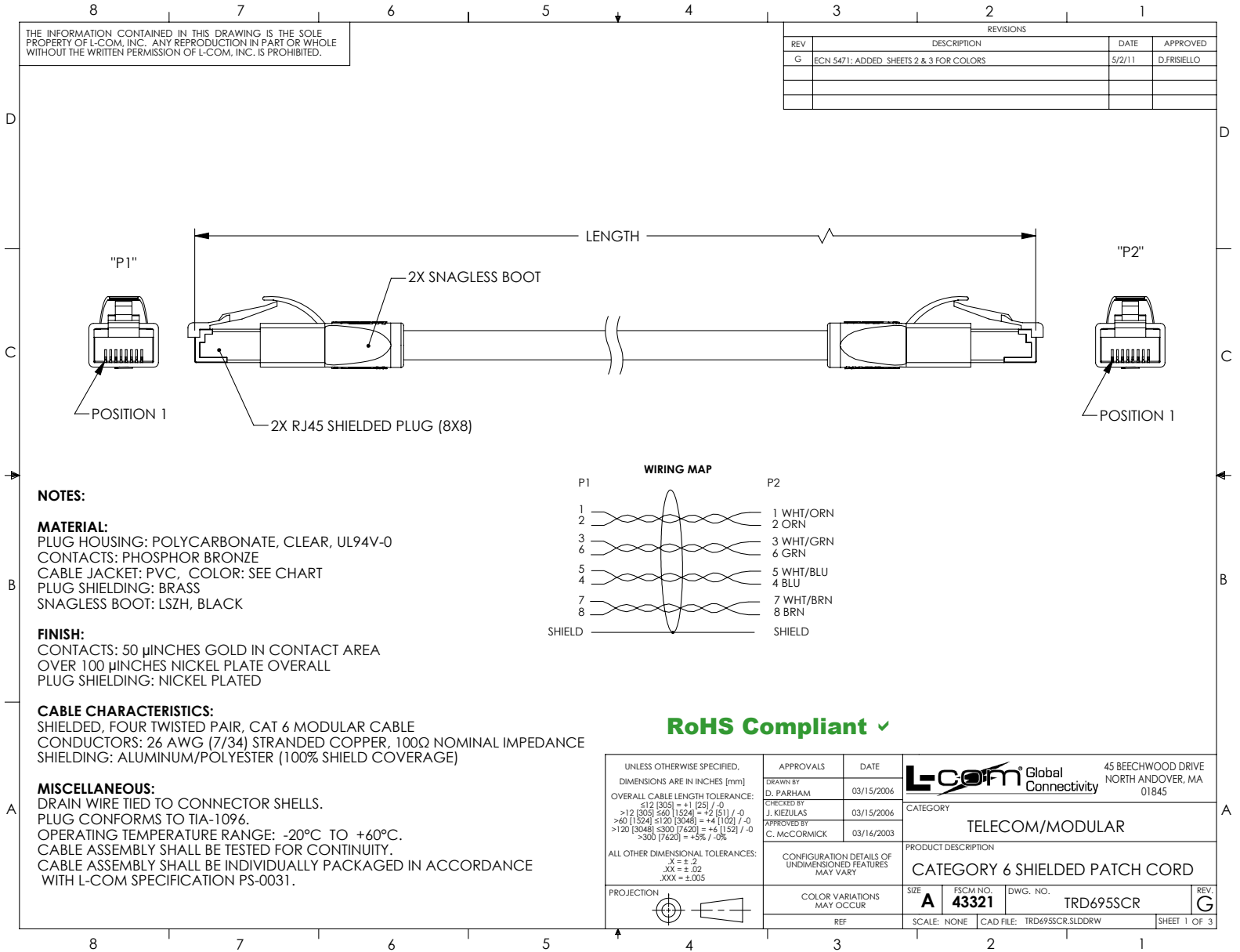


THE INFORMATION CONTAINED IN THIS DRAWING IS THE SOLE PROPERTY OF L-COM, INC. ANY REPRODUCTION IN PART OR WHOLE WITHOUT THE WRITTEN PERMISSION OF L-COM, INC. IS PROHIBITED.

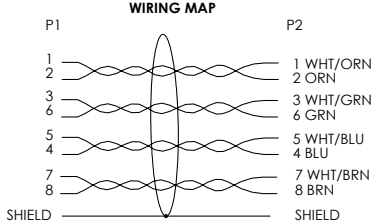
REVISIONS			
REV	DESCRIPTION	DATE	APPROVED
G	ECN 5471: ADDED SHEETS 2 & 3 FOR COLORS	5/2/11	D.FRISIELLO



NOTES:

MATERIAL:
 PLUG HOUSING: POLYCARBONATE, CLEAR, UL94V-0
 CONTACTS: PHOSPHOR BRONZE
 CABLE JACKET: PVC, COLOR: SEE CHART
 PLUG SHIELDING: BRASS
 SNAGLESS BOOT: LSZH, BLACK

FINISH:
 CONTACTS: 50 μINCHES GOLD IN CONTACT AREA
 OVER 100 μINCHES NICKEL PLATE OVERALL
 PLUG SHIELDING: NICKEL PLATED



CABLE CHARACTERISTICS:
 SHIELDED, FOUR TWISTED PAIR, CAT 6 MODULAR CABLE
 CONDUCTORS: 26 AWG (7/34) STRANDED COPPER, 100Ω NOMINAL IMPEDANCE
 SHIELDING: ALUMINUM/POLYESTER (100% SHIELD COVERAGE)

MISCELLANEOUS:
 DRAIN WIRE TIED TO CONNECTOR SHELLS.
 PLUG CONFORMS TO TIA-1096.
 OPERATING TEMPERATURE RANGE: -20°C TO +60°C.
 CABLE ASSEMBLY SHALL BE TESTED FOR CONTINUITY.
 CABLE ASSEMBLY SHALL BE INDIVIDUALLY PACKAGED IN ACCORDANCE WITH L-COM SPECIFICATION PS-0031.

RoHS Compliant ✓

UNLESS OTHERWISE SPECIFIED, DIMENSIONS ARE IN INCHES [mm]	APPROVALS	DATE		45 BEECHWOOD DRIVE NORTH ANDOVER, MA 01845
OVERALL CABLE LENGTH TOLERANCE: ≤ 12 [305] = +1 [25] / -0 > 12 [305] ≤ 60 [1524] = +2 [51] / -0 > 60 [1524] ≤ 120 [3048] = +4 [102] / -0 > 120 [3048] ≤ 300 [7620] = +6 [152] / -0 > 300 [7620] = +5% / -0%	DRAWN BY D. PARHAM 03/15/2006 CHECKED BY J. KIEZULAS 03/15/2006 APPROVED BY C. MCCORMICK 03/16/2003			
ALL OTHER DIMENSIONAL TOLERANCES: $X = \pm .2$ $XX = \pm .02$ $XXX = \pm .005$	CONFIGURATION DETAILS OF UNDIMENSIONED FEATURES MAY VARY		PRODUCT DESCRIPTION CATEGORY 6 SHIELDED PATCH CORD	
PROJECTION	COLOR VARIATIONS MAY OCCUR	REF	SIZE A FSCM NO. 43321 DWG. NO. TRD695SCR	REV. G
			SCALE: NONE CAD FILE: TRD695SCR.SLDDRW	SHEET 1 OF 3

8 7 6 5 4 3 2 1

THE INFORMATION CONTAINED IN THIS DRAWING IS THE SOLE PROPERTY OF L-COM, INC. ANY REPRODUCTION IN PART OR WHOLE WITHOUT THE WRITTEN PERMISSION OF L-COM, INC. IS PROHIBITED.

MODEL NO.	LENGTH FEET [METERS]	COLOR
TRD695SCR-1	1.0 [.30]	GRAY
TRD695SCR-2	2.0 [.61]	GRAY
TRD695SCR-3	3.0 [.91]	GRAY
TRD695SCR-5	5.0 [1.52]	GRAY
TRD695SCR-7	7.0 [2.13]	GRAY
TRD695SCR-10	10.0 [3.05]	GRAY
TRD695SCR-15	15.0 [4.57]	GRAY
TRD695SCR-20	20.0 [6.10]	GRAY
TRD695SCR-25	25.0 [7.62]	GRAY
TRD695SCR-30	30.0 [9.14]	GRAY
TRD695SCR-40	40.0 [12.20]	GRAY
TRD695SCR-50	50.0 [15.24]	GRAY
TRD695SCR-60	60.0 [18.29]	GRAY
TRD695SCR-75	75.0 [22.86]	GRAY
TRD695SCR-80	80.0 [24.38]	GRAY
TRD695SCR-90	90.0 [27.43]	GRAY
TRD695SCR-100	100.0 [30.48]	GRAY
TRD695SCR-150	150.0 [45.72]	GRAY
TRD695SCR-200	200.0 [60.96]	GRAY
TRD695SCR-BL-1	1.0 [.30]	BLUE
TRD695SCR-BL-2	2.0 [.61]	BLUE
TRD695SCR-BL-3	3.0 [.91]	BLUE
TRD695SCR-BL-5	5.0 [1.52]	BLUE
TRD695SCR-BL-7	7.0 [2.13]	BLUE
TRD695SCR-BL-10	10.0 [3.05]	BLUE
TRD695SCR-BL-15	15.0 [4.57]	BLUE
TRD695SCR-BL-20	20.0 [6.10]	BLUE
TRD695SCR-BL-25	25.0 [7.62]	BLUE
TRD695SCR-BL-30	30.0 [9.14]	BLUE
TRD695SCR-BL-40	40.0 [12.20]	BLUE
TRD695SCR-BL-50	50.0 [15.24]	BLUE
TRD695SCR-BL-60	60.0 [18.29]	BLUE
TRD695SCR-BL-75	75.0 [22.86]	BLUE
TRD695SCR-BL-80	80.0 [24.38]	BLUE
TRD695SCR-BL-90	90.0 [27.43]	BLUE
TRD695SCR-BL-100	100.0 [30.48]	BLUE
TRD695SCR-BL-150	150.0 [45.72]	BLUE
TRD695SCR-BL-200	200.0 [60.96]	BLUE


MODEL NO.	LENGTH FEET [METERS]	COLOR
TRD695SCR-BLK-1	1.0 [.30]	BLACK
TRD695SCR-BLK-2	2.0 [.61]	BLACK
TRD695SCR-BLK-3	3.0 [.91]	BLACK
TRD695SCR-BLK-5	5.0 [1.52]	BLACK
TRD695SCR-BLK-7	7.0 [2.13]	BLACK
TRD695SCR-BLK-10	10.0 [3.05]	BLACK
TRD695SCR-BLK-15	15.0 [4.57]	BLACK
TRD695SCR-BLK-20	20.0 [6.10]	BLACK
TRD695SCR-BLK-25	25.0 [7.62]	BLACK
TRD695SCR-BLK-30	30.0 [9.14]	BLACK
TRD695SCR-BLK-40	40.0 [12.20]	BLACK
TRD695SCR-BLK-50	50.0 [15.24]	BLACK
TRD695SCR-BLK-60	60.0 [18.29]	BLACK
TRD695SCR-BLK-75	75.0 [22.86]	BLACK
TRD695SCR-BLK-80	80.0 [24.38]	BLACK
TRD695SCR-BLK-90	90.0 [27.43]	BLACK
TRD695SCR-BLK-100	100.0 [30.48]	BLACK
TRD695SCR-BLK-150	150.0 [45.72]	BLACK
TRD695SCR-BLK-200	200.0 [60.96]	BLACK
TRD695SCR-GR-1	1.0 [.30]	GREEN
TRD695SCR-GR-2	2.0 [.61]	GREEN
TRD695SCR-GR-3	3.0 [.91]	GREEN
TRD695SCR-GR-5	5.0 [1.52]	GREEN
TRD695SCR-GR-7	7.0 [2.13]	GREEN
TRD695SCR-GR-10	10.0 [3.05]	GREEN
TRD695SCR-GR-15	15.0 [4.57]	GREEN
TRD695SCR-GR-20	20.0 [6.10]	GREEN
TRD695SCR-GR-25	25.0 [7.62]	GREEN
TRD695SCR-GR-30	30.0 [9.14]	GREEN
TRD695SCR-GR-40	40.0 [12.20]	GREEN
TRD695SCR-GR-50	50.0 [15.24]	GREEN
TRD695SCR-GR-60	60.0 [18.29]	GREEN
TRD695SCR-GR-75	75.0 [22.86]	GREEN
TRD695SCR-GR-80	80.0 [24.38]	GREEN
TRD695SCR-GR-90	90.0 [27.43]	GREEN
TRD695SCR-GR-100	100.0 [30.48]	GREEN
TRD695SCR-GR-150	150.0 [45.72]	GREEN
TRD695SCR-GR-200	200.0 [60.96]	GREEN

L-com Global Connectivity		45 BEECHWOOD DRIVE NORTH ANDOVER, MA 01845	
CATEGORY TELECOM/MODULAR			
PRODUCT DESCRIPTION CATEGORY 6 SHIELDED PATCH CORD			
SIZE A	FSCM NO. 43321	DWG. NO. TRD695SCR	REV. G
SCALE: NONE		CAD FILE: TRD695SCR.SLDORW	SHEET 2 OF 3

8 7 6 5 4 3 2 1

THE INFORMATION CONTAINED IN THIS DRAWING IS THE SOLE PROPERTY OF L-COM, INC. ANY REPRODUCTION IN PART OR WHOLE WITHOUT THE WRITTEN PERMISSION OF L-COM, INC. IS PROHIBITED.

MODEL NO.	LENGTH FEET [METERS]	COLOR
TRD695SCR-R-1	1.0 [.30]	RED
TRD695SCR-R-2	2.0 [.61]	RED
TRD695SCR-R-3	3.0 [.91]	RED
TRD695SCR-R-5	5.0 [1.52]	RED
TRD695SCR-R-7	7.0 [2.13]	RED
TRD695SCR-R-10	10.0 [3.05]	RED
TRD695SCR-R-15	15.0 [4.57]	RED
TRD695SCR-R-20	20.0 [6.10]	RED
TRD695SCR-R-25	25.0 [7.62]	RED
TRD695SCR-R-30	30.0 [9.14]	RED
TRD695SCR-R-40	40.0 [12.20]	RED
TRD695SCR-R-50	50.0 [15.24]	RED
TRD695SCR-R-60	60.0 [18.29]	RED
TRD695SCR-R-75	75.0 [22.86]	RED
TRD695SCR-R-80	80.0 [24.38]	RED
TRD695SCR-R-90	90.0 [27.43]	RED
TRD695SCR-R-100	100.0 [30.48]	RED
TRD695SCR-R-150	150.0 [45.72]	RED
TRD695SCR-R-200	200.0 [60.96]	RED
TRD695SCR-Y-1	1.0 [.30]	YELLOW
TRD695SCR-Y-2	2.0 [.61]	YELLOW
TRD695SCR-Y-3	3.0 [.91]	YELLOW
TRD695SCR-Y-5	5.0 [1.52]	YELLOW
TRD695SCR-Y-7	7.0 [2.13]	YELLOW
TRD695SCR-Y-10	10.0 [3.05]	YELLOW
TRD695SCR-Y-15	15.0 [4.57]	YELLOW
TRD695SCR-Y-20	20.0 [6.10]	YELLOW
TRD695SCR-Y-25	25.0 [7.62]	YELLOW
TRD695SCR-Y-30	30.0 [9.14]	YELLOW
TRD695SCR-Y-40	40.0 [12.20]	YELLOW
TRD695SCR-Y-50	50.0 [15.24]	YELLOW
TRD695SCR-Y-60	60.0 [18.29]	YELLOW
TRD695SCR-Y-75	75.0 [22.86]	YELLOW
TRD695SCR-Y-80	80.0 [24.38]	YELLOW
TRD695SCR-Y-90	90.0 [27.43]	YELLOW
TRD695SCR-Y-100	100.0 [30.48]	YELLOW
TRD695SCR-Y-150	150.0 [45.72]	YELLOW
TRD695SCR-Y-200	200.0 [60.96]	YELLOW

		45 BEECHWOOD DRIVE NORTH ANDOVER, MA 01845	
CATEGORY TELECOM/MODULAR			
PRODUCT DESCRIPTION CATEGORY 6 SHIELDED PATCH CORD			
SIZE A	FSCM NO. 43321	DWG. NO. TRD695SCR	REV. G
SCALE: NONE CAD FILE: TRD695SCR.SLDDRW			SHEET 3 OF 3

8 7 6 5 4 3 2 1

D

D

C

C

B

B

A

A

8 7 6 5 4 3 2 1