

4

3

2

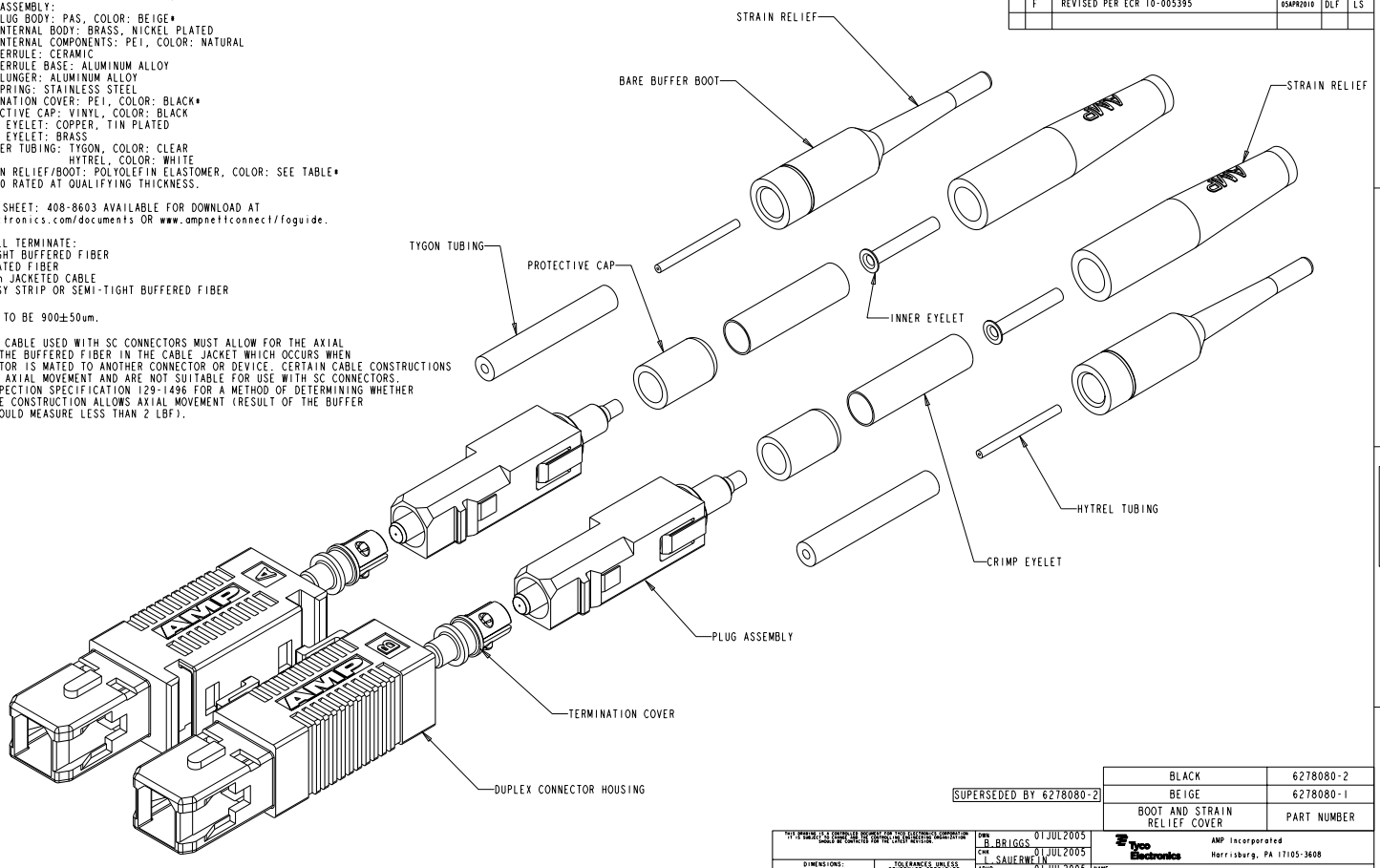
1

THIS DRAWING IS UNPUBLISHED. RELEASED FOR PUBLICATION BY TYCO ELECTRONICS CORPORATION. ALL RIGHTS RESERVED.

REV	DATE	BY	CHKD	APPROV
E	15JAN2009	DDE	LS	
E1	12MAR2009	BB	SB	
F	05APR2010	DLF	LS	

**MATERIAL:**  
 CONNECTOR HOUSING: POLYESTER PBT, COLOR: BEIGE\*  
 PLUG ASSEMBLY:  
 PLUG BODY: PAS, COLOR: BEIGE\*  
 INTERNAL BODY: BRASS, NICKEL PLATED  
 INTERNAL COMPONENTS: PEI, COLOR: NATURAL  
 FERRULE: CERAMIC  
 FERRULE BASE: ALUMINUM ALLOY  
 PLUNGER: ALUMINUM ALLOY  
 SPRING: STAINLESS STEEL  
 TERMINATION COVER: PEI, COLOR: BLACK\*  
 PROTECTIVE CAP: VINYL, COLOR: BLACK  
 CRIMP EYELET: COPPER, TIN PLATED  
 INNER EYELET: BRASS  
 POLYMER TUBING: TYGON, COLOR: CLEAR  
 HYTREL, COLOR: WHITE  
 \*UL94 V-0 RATED AT QUALIFYING THICKNESS.

- INSTRUCTION SHEET: 408-8603 AVAILABLE FOR DOWNLOAD AT [www.tycoelectronics.com/documents](http://www.tycoelectronics.com/documents) OR [www.omninetconnect/foguide](http://www.omninetconnect/foguide).
- THIS KIT WILL TERMINATE:  
 900um TIGHT BUFFERED FIBER  
 250um COATED FIBER  
 2.5-3.0mm JACKETED CABLE  
 900um EASY STRIP OR SEMI-TIGHT BUFFERED FIBER
- TIGHT BUFFER TO BE 900±50um.
- ANY JACKETED CABLE USED WITH SC CONNECTORS MUST ALLOW FOR THE AXIAL MOVEMENT OF THE BUFFERED FIBER IN THE CABLE JACKET WHICH OCCURS WHEN AN SC CONNECTOR IS MATED TO ANOTHER CONNECTOR OR DEVICE. CERTAIN CABLE CONSTRUCTIONS DO NOT ALLOW AXIAL MOVEMENT AND ARE NOT SUITABLE FOR USE WITH SC CONNECTORS. REFER TO INSPECTION SPECIFICATION 129-1496 FOR A METHOD OF DETERMINING WHETHER A GIVEN CABLE CONSTRUCTION ALLOWS AXIAL MOVEMENT (RESULT OF THE BUFFER PULL TEST SHOULD MEASURE LESS THAN 2 LDF).



BLACK	6278080-2
BEIGE	6278080-1
BOOT AND STRAIN RELIEF COVER	PART NUMBER

(SUPERSEDED BY 6278080-2)

DIMENSIONS: mm (INCHES)		TO BE USED IN CONJUNCTION WITH THE FOLLOWING TYCO PRODUCTS: 0 PLC #0-1 1 PLC #0-1 2 PLC #0-03 3 PLC #0-005 4 PLC #0-0005 ANGLES FINISH		AUTH: B. BRIGGS 01JUL2005 CHK: L. SAUERWEIN 01JUL2005 APP: S. BUCHTER 01JUL2005		AMP Incorporated Harrisburg, PA 17105-3608	
MATERIAL:		APPLICATION SPEC: - WEIGHT: - CUSTOMER DRAWING		PRODUCT SPEC: - APPLICATION SPEC: - WEIGHT: - SHEET: A2 CASE CODE: 00779 DRAWING NO: 6278080		RESTRICTED TO: - SCALE: 4:1 SHEET: 1 OF 1 REV: F	