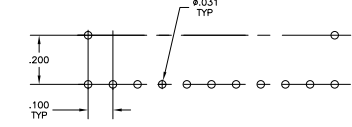
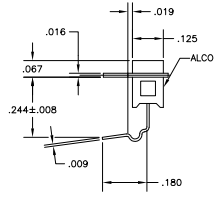
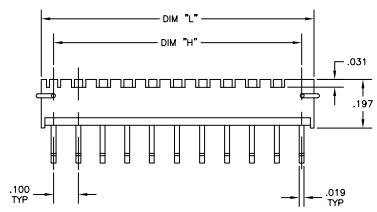
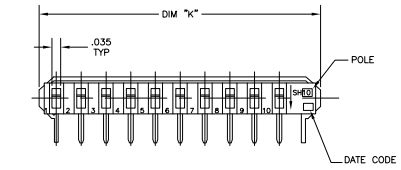


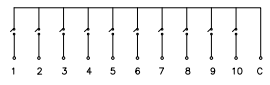
THIS DRAWING IS UNCLASSIFIED
 UNLESS INDICATED OTHERWISE
 ALL RIGHTS RESERVED

CONVERSION CHART	
INCH	MM
.008	0.20
.009	0.23
.010	0.25
.018	0.40
.019	0.49
.031	0.79
.035	0.90
.067	1.70
.100	2.54
.125	3.18
.180	4.58
.197	5.00
.200	5.08
.244	6.20
.298	7.57
.338	8.59
.400	10.18
.498	12.65
.538	13.67
.600	15.24
.698	17.73
.738	18.75
.800	20.32
.898	22.81
.938	23.83
1.000	25.40
1.099	27.89
1.138	28.91

REV	DATE	DESCRIPTION	BY	CHKD
AD	00			
A		E20-05-014182		



RECOMMENDED PCB HOLE LAYOUT



CIRCUIT

SPECIFICATIONS:

MATERIALS:
 BASE: PPS UL94V-0, BLACK
 COVER: PPS UL94V-0, BLACK
 ACTUATOR: 4/6 NYLON UL94V-0, WHITE
 MOVING CONTACT: COPPER ALLOY, GOLD OVER NICKEL
 FIXED CONTACT/TERMINAL: COPPER ALLOY, GOLD OVER NICKEL

ELECTRICAL:
 CONTACT RATING: 4V@20V DC MAX
 CONTACT RESISTANCE: 50 MILLIOHMS MAX
 INSULATION RESISTANCE: 100 MEGOHMS MIN AT 100V DC
 DIELECTRIC STRENGTH: 500V AC RMS @ SEA LEVEL
 LIFE EXPECTANCY: 1,000 CYCLES

MECHANICAL:
 ACTUATION FORCE: 800 GRAMS MAX
 TRAVEL: .050

ENVIRONMENTAL:
 OPERATING TEMPERATURE: -30° TO +85°C
 STORAGE TEMPERATURE: -45° TO +100°C
 RESISTANCE TO SOLDER HEAT: 265±3°C FOR 8±2 SECONDS
 SOLDERABILITY PER JIS C 0050 & JIS C 0053

NOTES:

1. ALL MATERIALS AND FINISHES SHALL COMPLY WITH EU DIRECTIVE 2002/95/EC OF 27JAN2003 (ROHS)

1.138	1.000	1.098	SSH10	1825153-5
.938	.800	.898	SSH08	1825153-4
.738	.600	.698	SSH06	1825153-3
.538	.400	.498	SSH04	1825153-2
.338	.200	.298	SSH02	1825153-1
DIM K	DIM H	DIM L	T&B P/N	TYCO P/N

THIS DRAWING IS A CONTROLLED DOCUMENT. REVISED BY: S. SAHDEV. DATE: 05/10/08. PROJECT: ASSEMBLY-SIP SWITCH (SSH02-10 SERIES). SIZE: A1. DATE ISSUED: 05/10/08. DRAWING NO: 100779. CUSTOMER DRAWING.