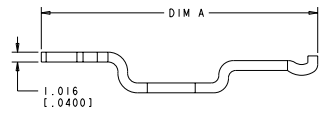
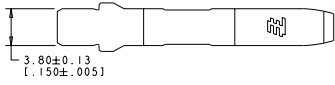
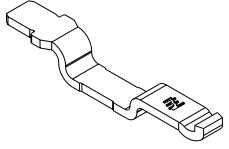
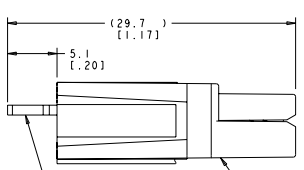
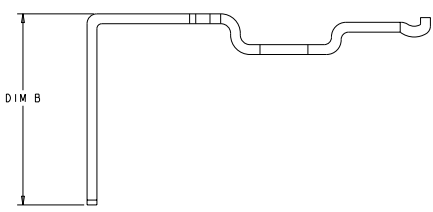
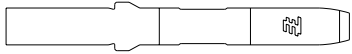
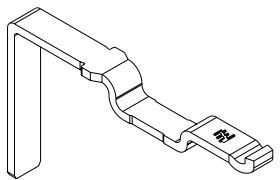
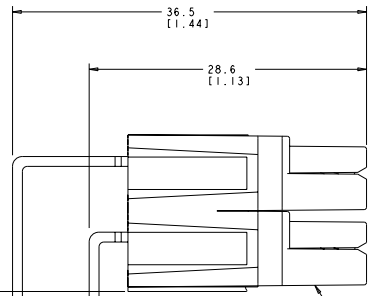


DATE DRAWING IS SUPERSEDED BY: ALL RIGHTS RESERVED

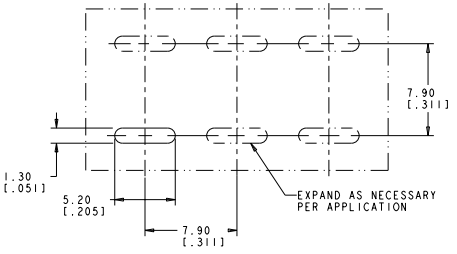
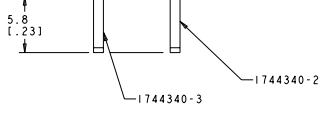
REVISED PER ECO-11-018056		DATE	BY	CHK
A				



HOUSING 1445957.  
(NOT INCLUDED)



HOUSINGS 1445957, STACKED VERTICALLY  
(NOT INCLUDED)



RECOMMENDED BOARD LAYOUT

565.23 [0.876]	19.70 [0.776]	35.40 [1.394]	1744340-3
414.01 [0.642]	11.90 [0.469]	27.50 [1.083]	1744340-2
320.94 [0.497]	0.00 [0.000]	28.50 [1.122]	1744340-1
SURFACE AREA	DIM B	DIM A	PART NUMBER

THIS DRAWING IS A CONTROLLED DOCUMENT.		DATE: 22 JUL 2008	REV: 00
DRAWING NO: 1744340-1		BY: BOSS	22 JUL 2008
MATERIAL: COPPER		PROCESS: BRIGHT TIN	APPROVAL: BOSS
SPECIFICATION: CUSTOMER DRAWING		STATE: CA	CAGE CODE: 1744340
PART NO: 1744340-1		REV: A	REV: 00779



TE Connectivity  
PCB CONTACT, HIGH POWER, POWER SERIES