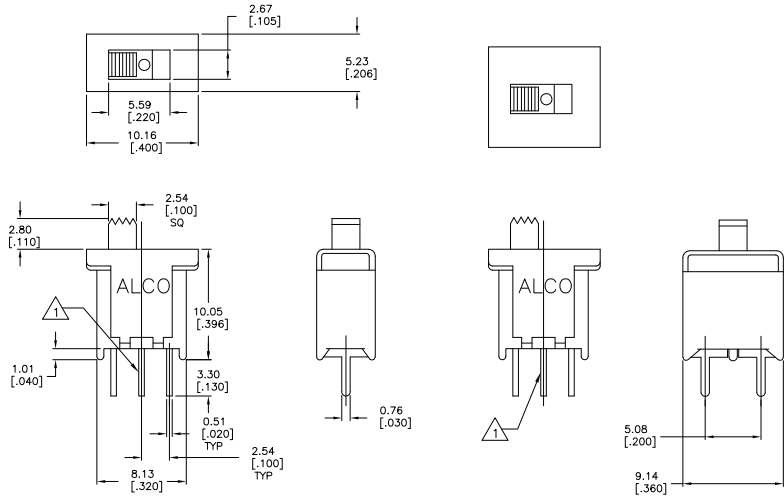


THIS DRAWING IS UNPUBLISHED. RELEASED FOR PUBLICATION. ALL RIGHTS RESERVED.

LOC	DIST	REVISIONS		
F	LNK	DESCRIPTION	DATE	BY
B1		REVISED PER ECO-11-004820	11MAR11	RK HMR

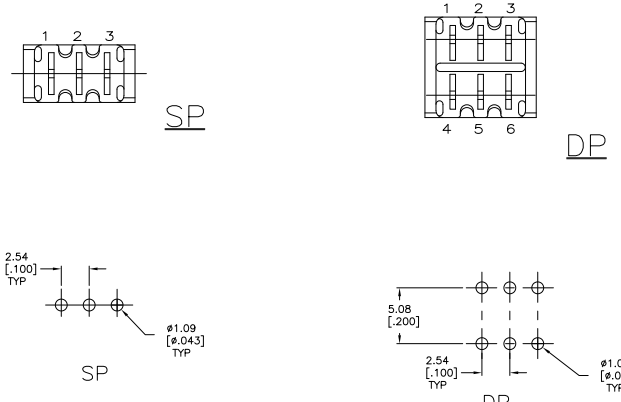


MATERIALS:
CASE: LCP, 94V-0.
ACTUATOR: PBT, 94V-0.
MOVING CONTACT: COPPER, GOLD PLATE OVER NICKEL.
FIXED CONTACT/TERMINAL: COPPER, GOLD PLATE OVER NICKEL.

ELECTRICAL:
CONTACT RATING: 0.4 VA MAX. @ 20 VDC OR PEAK AC.
INITIAL CONTACT RESISTANCE: 20 MILLIOHMS MAX. 100 MV & 1 MA. MIN. AT 500 VDC.
INSULATION RESISTANCE: 1,000 M
DIELECTRIC STRENGTH: 1000 VOLTS RMS AT SEA LEVEL.
LIFE: 60,000 - 80,000 CYCLES.

MECHANICAL:
ACTUATION FORCE: 150-600 GRAMS

ENVIRONMENTAL:
OPERATING TEMPERATURE: -4°F TO + 176°F (-20°C TO +80°C)
STORAGE TEMPERATURE: -4°F TO + 176°F (-20°C TO +80°C)
SOLDER HEAT RESISTANCE PER EIA-364-56A, PROCEDURE 3, COND. B
SOLDERABILITY PER EID 364-52, CLASS 2 CATEGORY 1



RECOMMENDED HOLE LAYOUT
LAYOUT TOLERANCES ±0.05[.002]

P/N	Alco P/N	Actuator Flush/Extended	Position	Type	ALCO	ALCO	ALCO
					1 2 3 4 5 6	1 2 3 4 5 6	1 2 3 4 5 6
1571982-1	TSS11DGPC04	Extended	2	SPDT	1,2	None	2,3
1571982-2	TSS11DG1PC04	Flush	2	SPDT	1,2	None	2,3
1571982-3	TSS11EG1PC04	Flush	3	SPDT	1,2	Off	2,3
1571982-4	TSS11EGPC04	Extended	3	SPDT	1,2	Off	2,3
1571982-5	TSS21KGPC04	Extended	2	DPDT	1-3, 4-6	None	Off
1571982-6	TSS21NG1PC04	Flush	2	DPDT	1-2, 4-5	None	2-3, 5-6
1571982-7	TSS21NGPC04	Extended	2	DPDT	1-2, 4-5	None	2-3, 5-6
1571982-8	TSS21PG1PC04	Flush	3	DPDT	1-2, 4-5	Off	2-3, 5-6
1571982-9	TSS21PGPC04	Extended	3	DPDT	1-2, 4-5	Off	2-3, 5-6

THIS DRAWING IS A CONTROLLED DOCUMENT. DATE: 20FEB2004

DESIGNED BY: M. BINNER
CHECKED BY: M. SARVER
APPROVED BY: M. SARVER
PRODUCT SPEC: -
APPLICATION SPEC: -
MATERIAL: -
FINISH: -

TE Connectivity
SLIDE SWITCH
TSS11 AND TSS21 SERIES

SIZE: A2 CASE CODE: 00779 DRAWING NO: 1571982
CUSTOMER DRAWING SCALE: 1:1 SHEET: 1 of 1 REV: B1