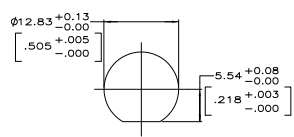
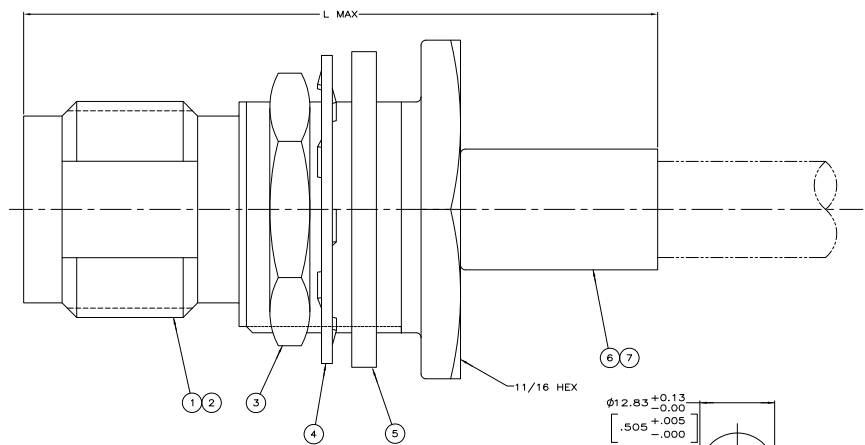
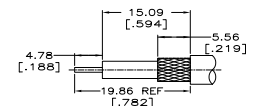


- REVISIONS
- USE HAND TOOL: 354940-1
 - MAXIMUM PANEL THICKNESS: 6.10 [.240]
 - SEE I.S. 9051



RECOMMENDED PANEL CUTOUT
SCALE: 3:1



RECOMMENDED STRIP LENGTH
SCALE: 3:1

RG-55/U, 55A/U, 55B/U, 223/U	34.93	1.375	220189-1	-	9-329099-0	329633	1-329632-2	1-329631-2	221149-6	414169-1	414168-6
RG-142/U, 142A/U, 142B/U, 400/U	34.93	1.375	220189-1	-	9-329382-0	329633	1-329632-2	1-329631-2	2-221149-6	414169-1	414168-5
OBSOLETE RG-188/U, 316/U TYPE DOUBLE BRAID	34.93	1.375	58330-1	21427-4	9-329049-0	329633	1-329632-2	1-329631-2	2-221149-0	414169-3	414168-4
RG-174/U, 188/U, 316/U	34.93	1.375	220210-1	21427-4	9-328666-0	329633	1-329632-2	1-329631-2	2-221149-0	414169-3	414168-3
OBSOLETE RG-59/U, 59A/U, 59B/U	34.93	1.375	220189-2	-	9-50428-0	329633	1-329632-2	1-329631-2	1-221149-3	414169-2	414168-2
OBSOLETE RG-58/U, 58A/U, 58B/U, 58C/U, 141/U, 141A/U	34.93	1.375	220189-1	-	9-50427-1	329633	1-329632-2	1-329631-2	221149-6	414169-1	414168-1
FOR USE WITH CABLE	L		DIE SET	⑦ BUSHING QTY=1	⑥ FERRULE QTY=1	⑤ GASKET QTY=1	④ LOCKWASHER QTY=1	③ JAM NUT QTY=1	② CONTACT QTY=1	① JACK ASSEMBLY QTY=1	PART NUMBER

THIS DRAWING IS A CONTROLLED DOCUMENT

DESIGNER	PHILIPS	DATE	108-12047
CHECKED	PHILIPS	DATE	
APPROVED	PHILIPS	DATE	

Customer Drawing: A1 00779 G-414168