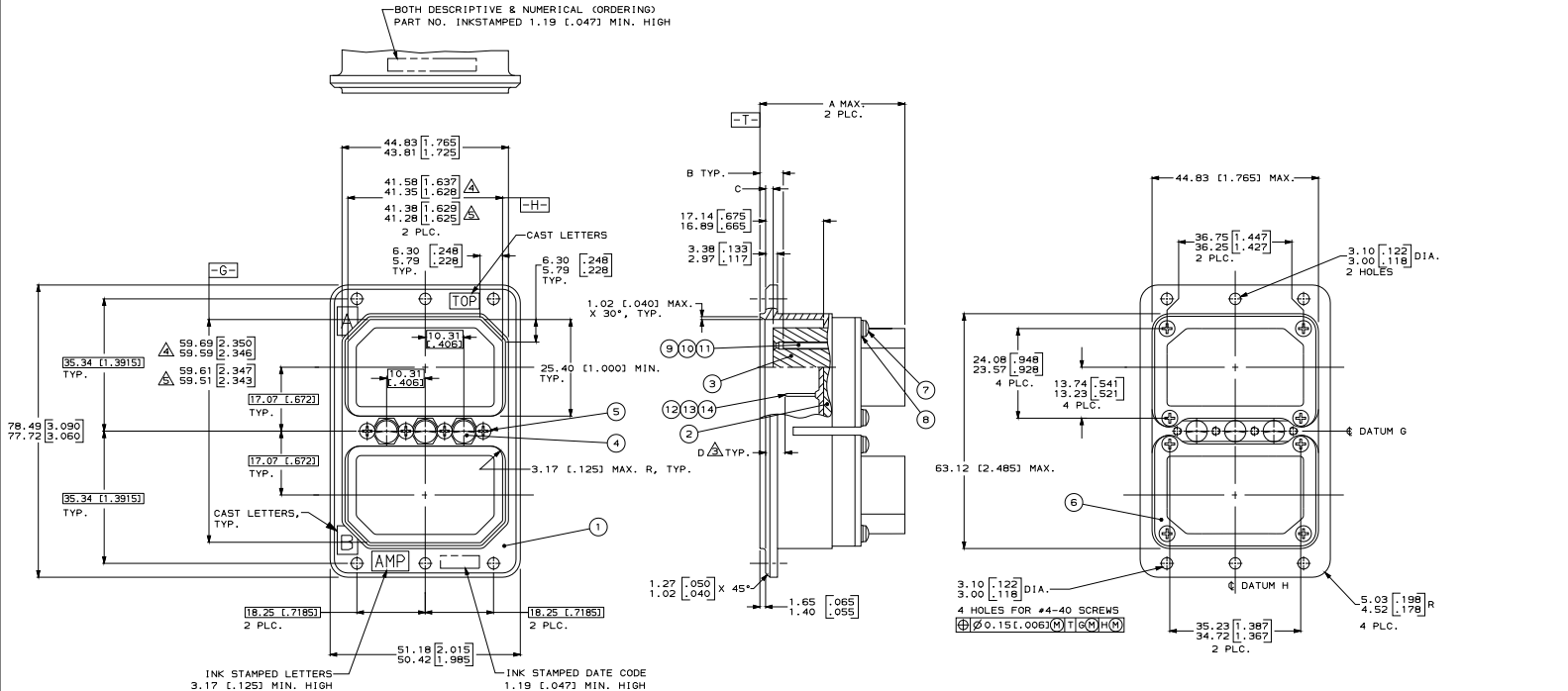


THIS DRAWING IS UNPUBLISHED. RELEASED FOR PUBLICATION . . . 19 . . .
 © COPYRIGHT 19 BY AMP INCORPORATED, HARRISBURG, PA. ALL INTERNATIONAL RIGHTS RESERVED. AMP PRODUCTS MAY BE COVERED BY U.S. AND FOREIGN PATENTS AND/OR PATENTS PENDING.

REVISIONS				DATE	APPD
1				1-04	LG



- CONTACTS SHOWN LOADED FOR ILLUSTRATION ONLY, ARE INCLUDED IN A CONTAINER WITHIN CONNECTOR PACKAGE FOR SHIPMENT.
- FOR INSERT ARRANGEMENTS AND DIMENSIONS, SEE TABLES ON SHEET 2 OF 2.
- FOR CONTACT SIZE 22, D DIMENSION REPRESENTS SOCKET CONTACTS.
- DIMENSION TAKEN AT 7.67/7.57 (0.302/.298) FROM TOP EDGE.
- DIMENSION TAKEN AT 1.32/1.22 (0.052/.048) FROM BOTTOM OF CAVITY.
- DIMENSIONS IN BRACKETS ARE IN INCHES.



UNLESS OTHERWISE SPECIFIED		PART NO	
DIMENSIONS ARE IN INCHES	DM 3-11-87	AMP INCORPORATED	
TOLERANCES ON:	CHK 3-11-87	Harrisburg, Pa. 17105	
2 PL DEC +	LABY LAMER	NAME	
3 PL DEC +	APPD 3-11-87	RECEPTACLE CONN. KIT,	
ANGLES = 0°30'	EDWARD HONARD	ARINC 404, DUAL INSERT,	
MATERIAL	AMPD 3-11-87	RM2R SERIES	
SEE TABLE	E. SMITH	DRAWING NO	
SHT. 2 OF 2	PRODUCT SPEC	213438	
FINISH	APPLICATION SPEC	SIZE	FSCH NO
SEE TABLE	WEIGHT	D	00779
SHT. 2 OF 2		SCALE	2:1
		SHEET 1 of 2	

AMP 1750-3 REV 10-84
 05-28-84

11-16-87

CUSTOMER DRAWING

