



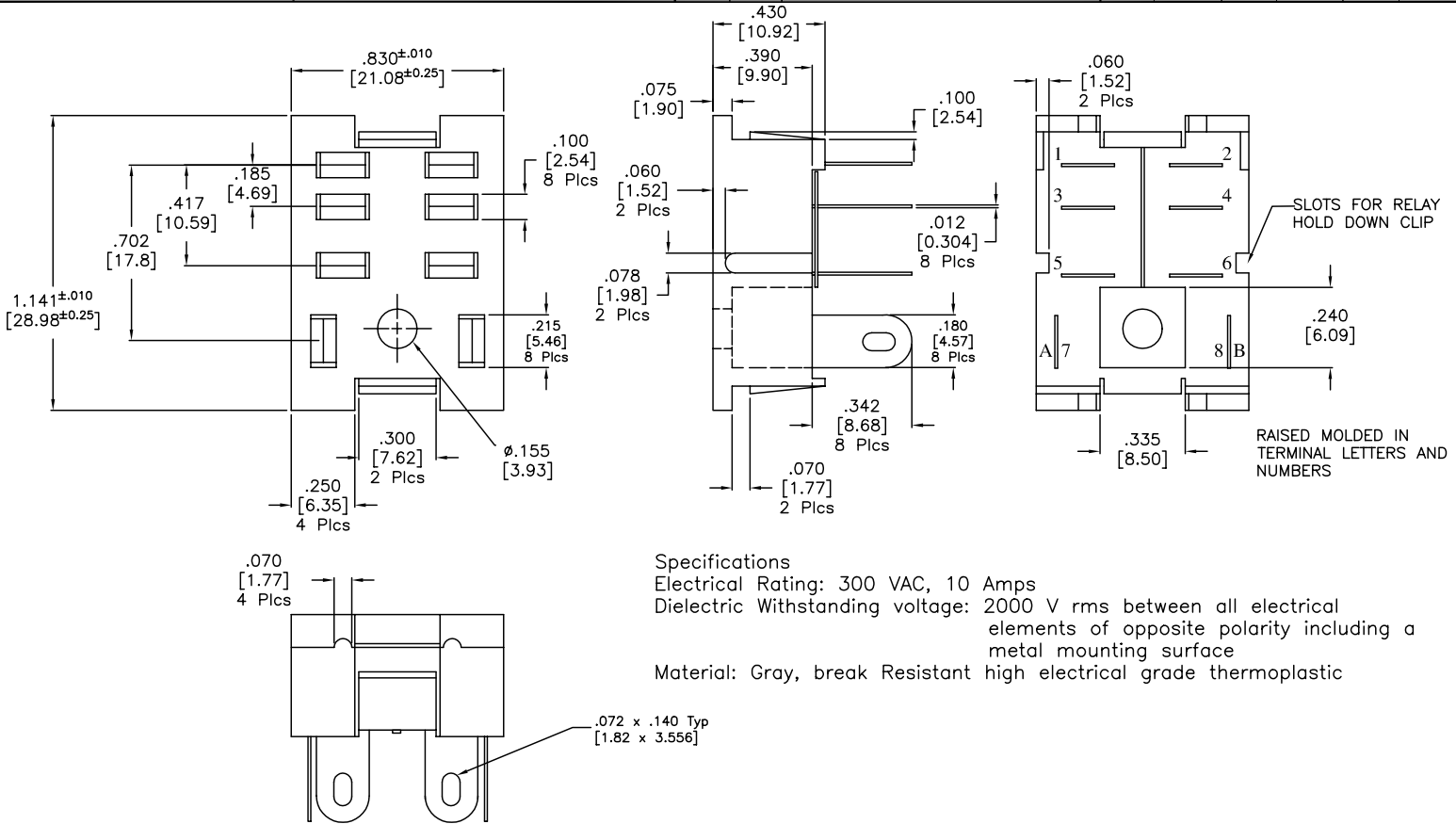
ALL RIGHTS RESERVED. NO PORTION OF THIS PUBLICATION, WHETHER IN WHOLE OR IN PART CAN BE REPRODUCED WITHOUT THE EXPRESS WRITTEN CONSENT OF SPC TECHNOLOGY.

SPC-F005.DWG

REVISIONS

DOC. NO. SPC-F005 * Effective: 7/8/02 * DCP No: 1398

| DCP # | REV | DESCRIPTION | DRAWN | DATE | CHECKD | DATE | APPRVD | DATE |
|-------|-----|-------------|-------|---------|--------|---------|--------|---------|
| 844 | A | RELEASED | JWM | 5/20/03 | HO | 5/20/03 | DJC | 5/20/03 |



Specifications

Electrical Rating: 300 VAC, 10 Amps

Dielectric Withstanding voltage: 2000 V rms between all electrical elements of opposite polarity including a metal mounting surface

Material: Gray, break Resistant high electrical grade thermoplastic

DISCLAIMER:
ALL STATEMENTS AND TECHNICAL INFORMATION CONTAINED HEREIN ARE BASED UPON INFORMATION AND/OR TESTS WE BELIEVE TO BE ACCURATE AND RELIABLE. SINCE CONDITIONS OF USE ARE BEYOND OUR CONTROL, THE USER SHALL DETERMINE THE SUITABILITY OF THE PRODUCT FOR THE INTENDED USE AND ASSUME ALL RISK AND LIABILITY WHATSOEVER IN CONNECTION THEREWITH.

TOLERANCES:

Tolerances Unless
Otherwise Specified:
Decimal=±.005
Fractional=±.010

| DRAWN BY: | DATE: |
|---------------|---------|
| Jeff McVicker | 5/20/03 |
| CHECKED BY: | DATE: |
| Hisham Odish | 5/20/03 |
| APPROVED BY: | DATE: |
| Daniel Carey | 5/20/03 |

DRAWING TITLE:

Relay Socket, 8 Pin, Chassis Mount, Solder Terminals

| SIZE | DWG. NO. | ELECTRONIC FILE | REV |
|------------|----------|---------------------|---------------|
| A | SPC9802 | 95B7506.dwg | A |
| SCALE: NTS | | U.O.M.: INCHES [mm] | SHEET: 1 OF 1 |