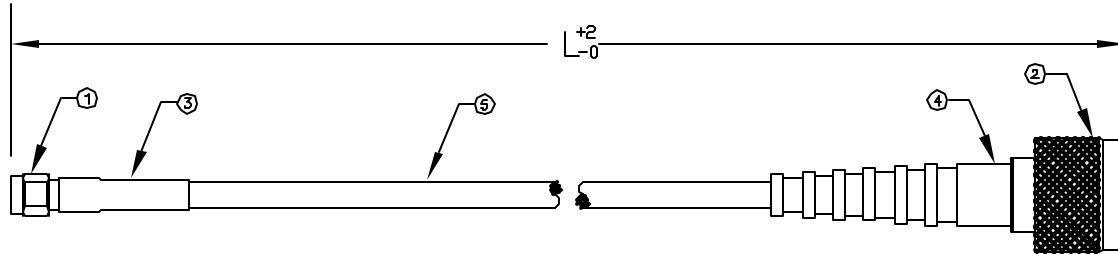


All rights Reserved . No Portion of this publication, whether in whole or in part can be reproduced without the express written consent of SPC Technology.

Revisions:			DOC. No.		* Effective: 12/21/98		* DCP No. 680	
DCP: #	REV	Description:	Drawn	Date	Checked	Date	Approved	Date
XXX	A	RELEASED	Veena	27-11-08	Suresh	27-11-08	JN	12/12/08



STRAIN RELIEF SHOWN AS ILLUSTRATION ONLY

ITEM	DESCRIPTION	MATERIAL	FINISH
5	CABLE	-	-
4	STRAIN RELIEF	POLYVINYL CHLORIDE	BLACK
3	TUBING	**HEAT SHRINK	BLACK
2	N MALE CRIMP	BRASS	NICKEL
1	SMA MALE CRIMP	BRASS	NICKEL

**DUAL WALL POLYOLEFIN

Manufacturer Part Number	Length	Cable Type	Strain Relief
SPC25235	12	RG-142B/U	No
SPC25236	24	RG-142B/U	No
SPC25237	36	RG-142B/U	No
SPC25238	48	RG-142B/U	No
SPC25239	60	RG-142B/U	No
SPC25240	72	RG-142B/U	No
SPC25381	12	RG-223/U	No
SPC25382	24	RG-223/U	No
SPC25383	36	RG-223/U	No
SPC25384	48	RG-223/U	No
SPC25385	60	RG-223/U	No
SPC25386	72	RG-223/U	No
SPC25932	12	RG-55B/U	No
SPC25933	24	RG-55B/U	No
SPC25934	36	RG-55B/U	No
53952CPS	84	U/B55-GR	dN
SPC25936	60	RG-55B/U	No
SPC25937	72	RG-55B/U	No
SPC25938	12	RG-58C/U	Yes
SPC25939	24	RG-58C/U	Yes
SPC25940	36	RG-58C/U	Yes
SPC25941	48	RG-58C/U	Yes
SPC25942	60	RG-58C/U	Yes

Disclaimer:

All statements and technical information contained herein are based upon information and/or tests we believe to be accurate and reliable. Since conditions of use are beyond our control, the user shall determine the suitability of the product for the intended use and assume all risk and liability whatsoever in connection therewith.



SPC TECHNOLOGY

Drawing Title:

SMA MALE CRIMP TO N MALE CRIMP

Size: A	Dwg. No: TA-1014	Electronic File: TA-1014.dwg	Rev: A
---------	------------------	------------------------------	--------

Scale: NTS U.O.M.: Inches (mm) Sheet: 1 of 2

Unless otherwise specified, Dimensions are for references purposes only.

Drawn By:	Date:
Veena	27-11-08
Checked By:	Date:
Suresh	27-11-08
Approved By:	Date:
Jason Nash	12/12/08

All rights Reserved . No Portion of this publication, whether in whole or in part can be reproduced without the express written consent of SPC Technology.

Revisions:			DOC. No.		* Effective: 12/21/98		* DCP No. 680	
DCP: #	REV	Description:	Drawn	Date	Checked	Date	Approved	Date
XXX	A	RELEASED	Veena	27-11-08	Suresh	27-11-08	JN	12/12/08



Manufacturer Part Number	Length	Cable Type	Strain Relief
SPC25943	72	RG-58C/U	Yes
SPC25944	12	RG-188A/U	No
SPC25945	24	RG-188A/U	No
SPC25946	36	RG-188A/U	No
SPC25947	48	RG-188A/U	No
SPC25948	60	RG-188A/U	No
SPC25949	72	RG-188A/U	No
SPC25950	12	RG-400/U	No
SPC25951	24	RG-400/U	No
SPC25952	36	RG-400/U	No
SPC25953	48	RG-400/U	No
SPC25954	60	RG-400/U	No
SPC25955	72	RG-400/U	No
SPC25956	12	RG-316/U	No
SPC25957	24	RG-316/U	No
SPC25958	36	RG-316/U	No
SPC25959	48	RG-316/U	No
SPC25960	60	RG-316/U	No
SPC25961	72	RG-316/U	No
SPC25962	12	RG-174A/U	No
SPC25963	24	RG-174A/U	No
SPC25964	36	RG-174A/U	No
SPC25965	48	RG-174A/U	No
SPC25966	60	RG-174A/U	No
SPC25967	72	RG-174A/U	No
SPC28560	12	RG-58A/U	Yes
SPC28561	24	RG-58A/U	Yes
SPC28562	36	RG-58A/U	Yes
SPC28563	48	RG-58A/U	Yes
SPC28564	60	RG-58A/U	Yes
SPC28565	72	RG-58A/U	Yes
SPC28566	12	LMR-195	No
SPC28567	24	LMR-195	No
SPC28568	36	LMR-195	No
SPC28569	48	LMR-195	No
SPC28570	60	LMR-195	No
SPC28571	72	LMR-195	No
SPC28572	12	LMR-100	No
SPC28573	24	LMR-100	No
SPC28574	36	LMR-100	No
SPC28575	48	LMR-100	No
SPC28576	60	LMR-100	No
SPC28577	72	LMR-100	No
SPC28578	12	LMR-240	No
SPC28579	24	LMR-240	No
SPC28580	36	LMR-240	No
SPC28581	48	LMR-240	No
SPC28582	60	LMR-240	No
SPC28583	72	LMR-240	No
SPC28584	12	RG-8/X	No
SPC28585	24	RG-8/X	No
SPC28586	36	RG-8/X	No
SPC28587	48	RG-8/X	No
SPC28588	60	RG-8/X	No
SPC28589	72	RG-8/X	No
SPC28590	12	RG-316/UDS	No
SPC28591	24	RG-316/UDS	No
SPC28592	36	RG-316/UDS	No
SPC28593	48	RG-316/UDS	No
SPC28594	60	RG-316/UDS	No
SPC28595	72	RG-316/UDS	No

Disclaimer:

All statements and technical information contained herein are based upon information and/or tests we believe to be accurate and reliable. Since conditions of use are beyond our control, the user shall determine the suitability of the product for the intended use and assume all risk and liability whatsoever in connection therewith.



SPC TECHNOLOGY

Unless otherwise specified, Dimensions are for references purposes only.	Drawn By:	Date:	Drawing Title:			
	Veena	27-11-08	SMA MALE CRIMP TO N MALE CRIMP			
	Checked By:	Date:	Size:	Dwg. No	Electronic File	Rev
	Suresh	27-11-08	A	TA-1014	TA-1014.dwg	A
Approved By:	Date:	Scale: NTS		U.O.M.: Inches (mm)	Sheet: 2 of 2	
Jason Nash	12/12/08					