



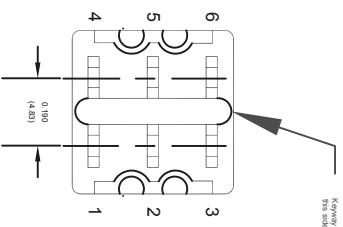
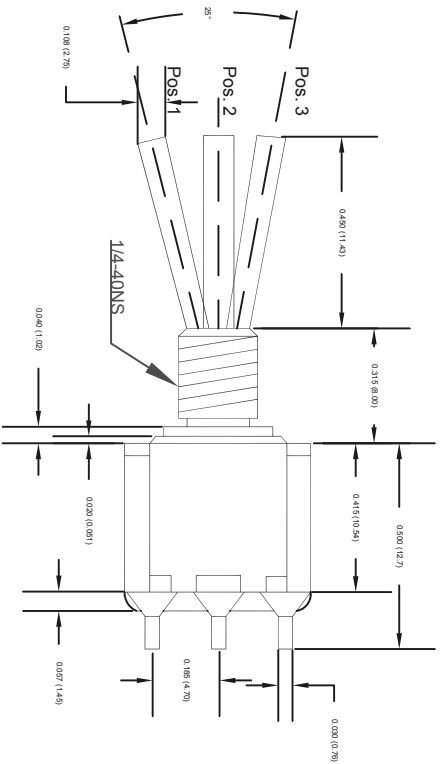
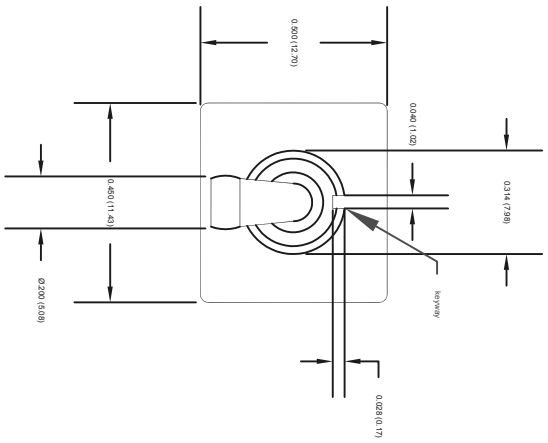
SPC  
TECHNOLOGY

ALL RIGHTS RESERVED. NO PORTION OF THIS PUBLICATION, WHETHER IN WHOLE OR IN PART CAN BE REPRODUCED WITHOUT THE EXPRESS WRITTEN CONSENT OF SPC TECHNOLOGY.  
SPC-F005.DWG

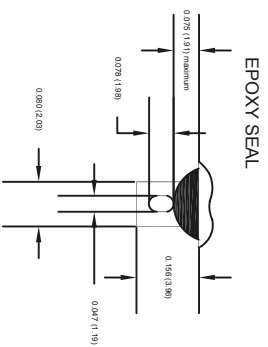
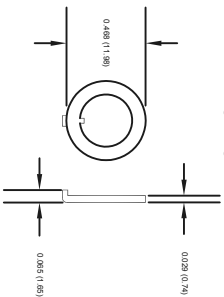
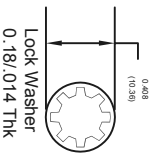
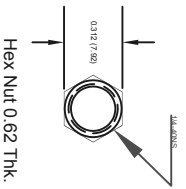
REVISIONS

DCP #	REV	DESCRIPTION	DRAWN	DATE	CHECKD	DATE	APPRVD	DATE
			AMU	10-08-10	MRD	14-08-10	XXX	25-08-10

DOC. NO. SPC-F005 \* Effective: 7/8/02 \* DCP No: 1398



TERMINATION



CONN-TERMS	SWITCHING POSITION		
	ON	OFF	ON
2 - 3			
5 - 6			
SCHEMATIC	<p>1 ● 2 ● 3 ● 4 ● 5 ● 6 ●</p> <p>○ 2 Comm.      ○ 5 Comm.</p>		

TOLERANCES:

UNLESS OTHERWISE SPECIFIED, DIMENSIONS ARE FOR REFERENCE PURPOSES ONLY.

DRAWN BY:

AMU

DATE:

10-08-10

DRAWING TITLE:

Toggle Switch - DPDT

CHECKED BY:

MRD

DATE:

14-08-10

APPROVED BY:

XXX

DATE:

25-08-10

SCALE:

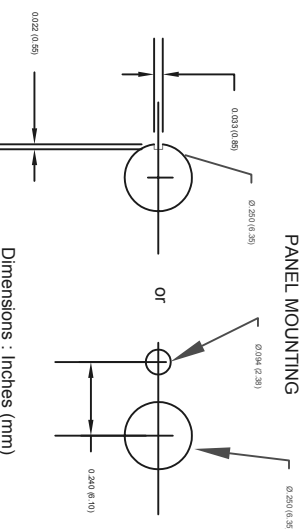
NTS

U.O.M.:

INCHES [mm]

SHEET:

1 OF 1



DISCLAIMER:  
ALL STATEMENTS AND TECHNICAL INFORMATION CONTAINED HEREIN ARE BASED UPON INFORMATION AND/OR TESTS WE BELIEVE TO BE ACCURATE AND RELIABLE. SINCE CONDITIONS OF USE ARE BEYOND OUR CONTROL, THE USER SHALL DETERMINE THE SUITABILITY OF THE PRODUCT FOR THE INTENDED USE AND ASSUME ALL RISK AND LIABILITY WHATSOEVER IN CONNECTION THEREWITH.

SIZE DWG. NO. XXX

DATE: 14-08-10

SCALE: NTS

ELECTRONIC FILE 50N312

REV A



SPC  
TECHNOLOGY

ALL RIGHTS RESERVED. NO PORTION OF THIS PUBLICATION, WHETHER IN WHOLE OR IN PART CAN BE REPRODUCED WITHOUT THE EXPRESS WRITTEN CONSENT OF SPC TECHNOLOGY.  
SPC-F005.DWG

REVISIONS

DCP #	REV	DESCRIPTION	DRAWN	DATE	CHECKD	DATE	APPRVD	DATE
			AMU	10-08-10	MRD	14-08-10	XXX	25-08-10

DOC. NO. SPC-F005 \* Effective: 7/8/02 \* DCP No: 1398



RoHS  
Compliant

Notes:

Rating : 5 Amps with resistive load at 120 VAC or 28 VDC

2 Amps with resistive load at 250 VAC

Contact Resistance : 10 milliohm maximum

Insulation Resistance : 1000 Megaohms minimum at 500 VDC

Dielectric Strength : 1000 V RMS

Operating Life : 40,000 Cycles

Includes : Hex nut, lock washer and locking ring

Housing : Stainless steel

Bushing : Brass, Nickel Plated

Case : DAP, UL94V-0

Actuator : Brass, Chrome Plated

Contact/Terminals : Copper alloy, Silver Plated

Operating Temperature : -30°C to 85°C

Part Number Table

Description	Part Number
Toggle Switch - DPDT	SPC21301

DISCLAIMER:  
ALL STATEMENTS AND TECHNICAL INFORMATION CONTAINED HEREIN ARE BASED UPON INFORMATION AND/OR TESTS WE BELIEVE TO BE ACCURATE AND RELIABLE. SINCE CONDITIONS OF USE ARE BEYOND OUR CONTROL, THE USER SHALL DETERMINE THE SUITABILITY OF THE PRODUCT FOR THE INTENDED USE AND ASSUME ALL RISK AND LIABILITY WHATSOEVER IN CONNECTION THEREWITH.

TOLERANCES:

UNLESS OTHERWISE SPECIFIED, DIMENSIONS ARE FOR REFERENCE PURPOSES ONLY.

DRAWN BY:

AMU

DATE:

10-08-10

DRAWING TITLE:

Toggle Switch -- DPDT

CHECKED BY:

MRD

DATE:

14-08-10

SIZE DWG. NO.

XXX

ELECTRONIC FILE

50N312

REV

A

APPROVED BY:

XXX

DATE:

25-08-10

SCALE: NTS

XXX

U.O.M.: INCHES [mm]

XXX

SHEET: 1

OF 1