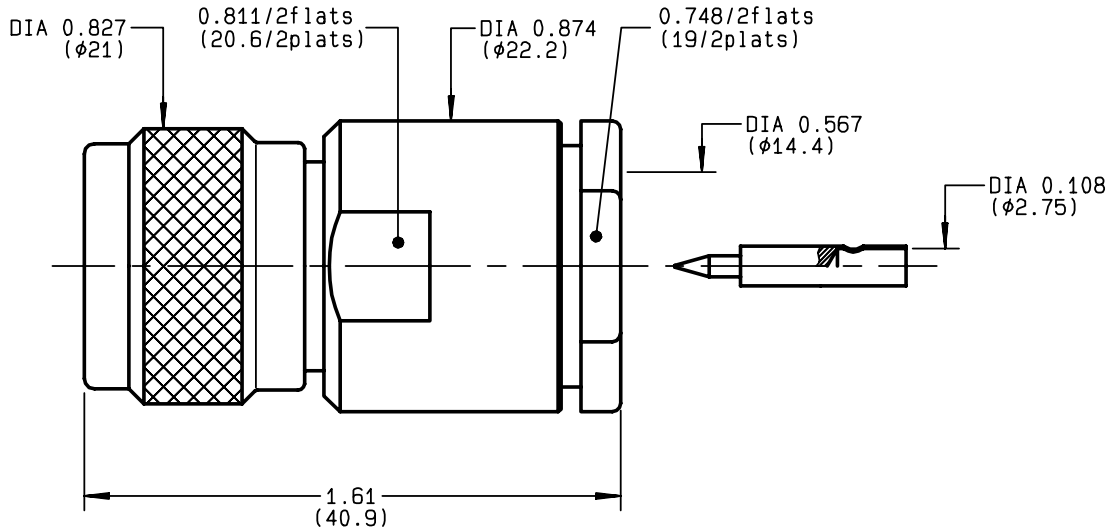


**STRAIGHT PLUG CLAMP TYPE
CABLE 14/50 D**

R161.027.000
SERIES N



NOMINAL IMPEDANCE	50 Ω
FREQUENCY RANGE	0-11 GHz
TEMPERATURE RATING	-55/+155 °C
V.S.W.R	1.30 + x F(GHz)Maxi
RF INSERTION LOSS	0.048 √F(GHz) dB Maxi
VOLTAGE RATING	1400 Veff Maxi
DIELECTRIC WITHSTANDING VOLTAGE	2500 Veff Mini
INSULATION RESISTANCE	5000 M ΩMini
HERMETIC SEAL	NA Atm.cm ³ /s
LEAKAGE (pressurized only)	NA
MECHANICAL DURABILITY	500 Cycles
WEIGHT	58.4 gr
SPECIFICATION	

CABLES : **RG 217**

OTHERS CHARACTERISTICS

CABLE RETENTION	400 N Mini
CENTER CONTACT RETENTION	
Axial force - mating end	NA N Mini
Axial force - opposite end	NA N Mini
Torque	NA cm.N Mini
RECOMMENDED TORQUES	
Mating	130 cm.N
Panel nut	NA cm.N
Clamp nut	800 cm.N

CONNECTOR PARTS	MATERIALS	FINISH	(all values are given) in micrometers
BODY	:BRASS	BBR 2	
OUTER CONTACT	:BRASS	BBR 2	
CENTER CONTACT	:BRASS	GOLD 0.5 OVER NICKEL 2	
INSULATOR	:PTFE	-	
GASKET	:SILICONE RUBBER	-	
OTHERS PIECES	:BRASS	BBR 2	

BONDMINI

ISSUE	CREATION DATE	FILE PART-NUMBER
9809S03	16/11/1992	EPC 96-07



RADIALL®

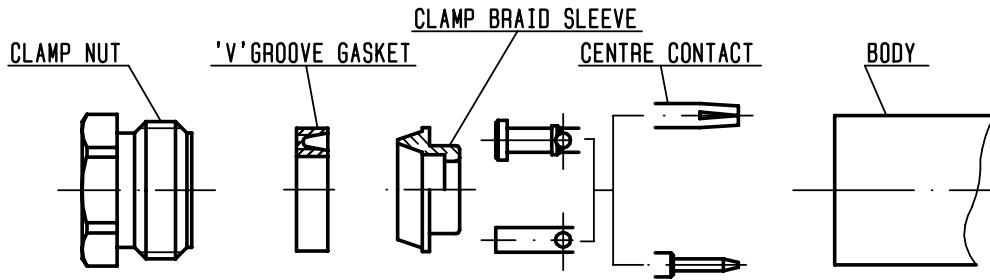
The information given here is subject to change without notice.
Design changes may be in order to improve the product .

Connect to the future



R161.027.000

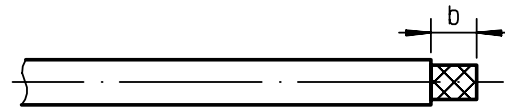
ISSUE 9809S03 SERIES N



①

Strip the cable .

-
-
-



Stripping	a	b	c	d	e
inch	0.197	0.394	0	0	0.039
mm	5	10			1

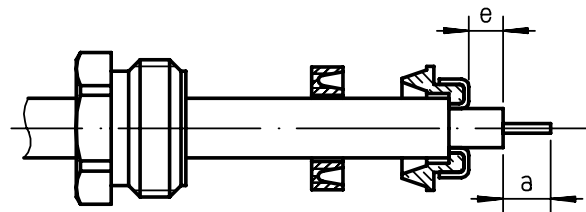
②

Slide the clamp nut and the 'V' groove gasket onto the cable .

Slide clamp braid sleeve over braid .
Fold back braid and trim off surplus braid .

Trim back dielectric as shown .

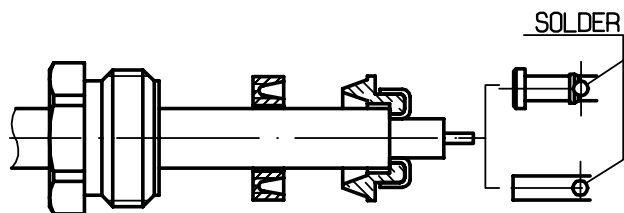
-
-
-



③

Solder the cable inner conductor into centre contact .

-
-
-
-

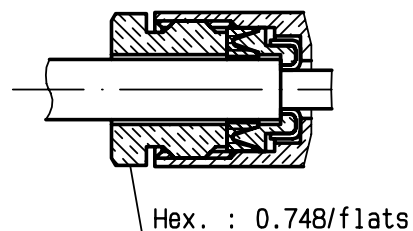


④

Screw sub-assembly into the connector body .

(recommended coupling torque 70.8 in.lb)

-
-



BONOMINI