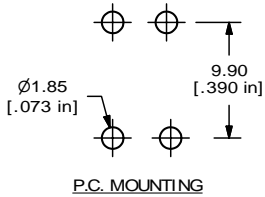
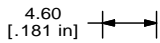
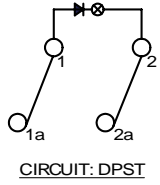
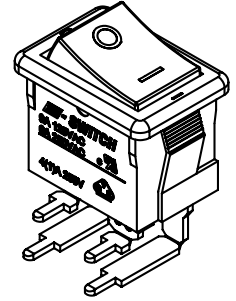
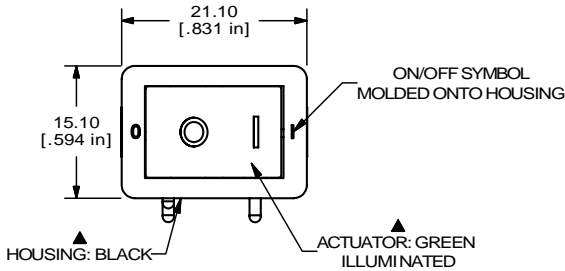


RECOMMENDED PANEL MOUNTING

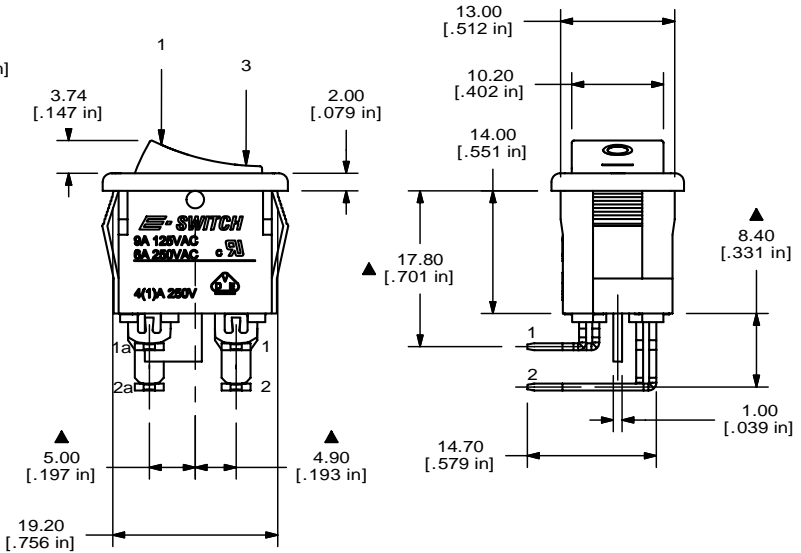
PANEL THICKNESS	X
0.75-1.25	19.2-19.3
1.25-2.00	19.3-19.4
2.00-3.00	19.5-19.6



SWITCH FUNCTION		
POS. 1	POS. 2	POS. 3
ON	NONE	OFF
1-1a, 2-2a	N/A	OPEN



- NOTES:
- ALL DIMENSIONS IN MM [INCH]
 - GENERAL TOLERANCE: X.X=±0.4
X.XX=±0.25
 - RATING:
6A @250VAC; 9A @125VAC (UL, CSA, VDE)
 - LAMP VOLTAGE: 125VAC
 - MATERIAL:
CONTACT SURFACE: COIN SILVER, SILVER PLATE
TERMINAL: COPPER ALLOY W/ SILVER PLATE.
 - CONTACT RESISTANCE: 20 MILLI-OHMS TYP. INITIAL
 - INSULATION RESISTANCE: 1000 MEGA-OHMS
 - DIELECTRIC STRENGTH:
>1500V RMS min. @SEA LEVEL
 - MECHANICAL LIFE: 30,000 CYCLES.
 - ELECTRICAL LIFE: 10,000 CYCLES
 - ▲ DENOTES CRITICAL PARAMETER.
 - 2002/95/EC (ROHS) COMPLIANT



B	17051	ADDED TERM. NUMBERS	3/1/07	TN
A	16946	RELEASED FOR PRODUCTION	2/1/07	TN
REV	PCR NO	DESCRIPTION	DATE	BY

TITLE R1973BBLKGILGR1				
SCALE 1.5:1	DATE 3/1/2007	DR TN	DWG M400096	REV B

THE INFORMATION CONTAINED IN THIS DOCUMENT IS PROPRIETARY TO E-SWITCH AND IS NOT TO BE COPIED OR TRANSFERRED