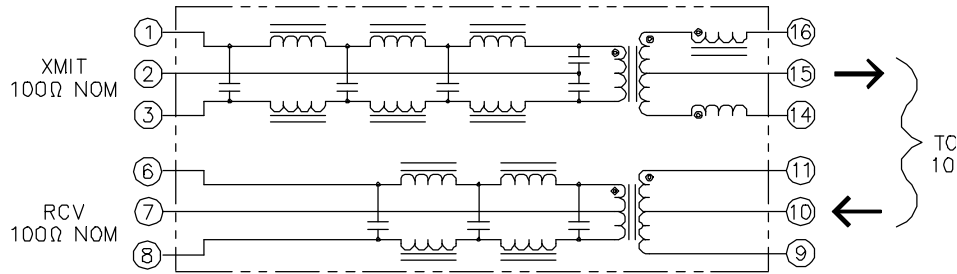


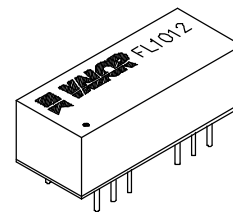
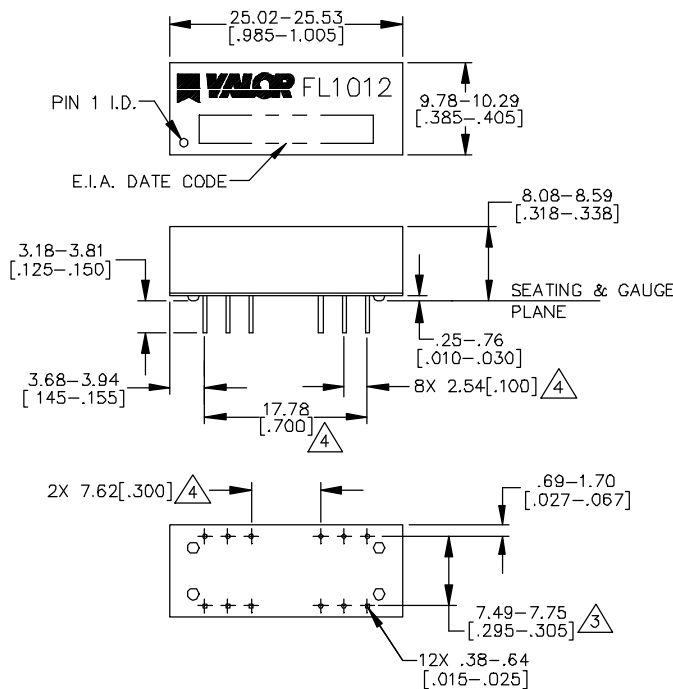
Electrical



ELECTRICAL SPECIFICATIONS @ 25°C

| | | |
|-------------------------------------------------------|-------------------------------------------------------------------------|-----------------------------------------------------------------------------------------|
| TYPE | TRANSMITTER FILTER: : 7 POLE, | RECEIVER FILTER: : 5 POLE, BALANCED LOW-PASS, 100Ω |
| *CUT-OFF FREQ | : 17MHz ± 1MHz | : 17MHz ± 1MHz |
| INSERTION LOSS (1-10MHZ) | : 1.0dB MAX | : 0.8dB MAX |
| *ATTENUATION@ 20MHz | : 7dB MIN | : 6dB MIN |
| @ 25MHz | : 19dB MIN | : 14dB MIN |
| @ 30MHz | : 30dB MIN | : 20dB MIN |
| @ 40MHz | : 32dB MIN | : 31dB MIN |
| HIPOT | : 1500VRMS FOR 1 MINUTE PINS 1,2 & 3 TO 14,15 & 16 5Ω MAX (14-15) | : 1500VRMS FOR 1 MINUTE PINS 6,7 & 8 TO 9,10 & 11 .5Ω MAX (6-7) .1Ω MAX (9-10) |
| DCR | | : 30dB MIN |
| COMMON MODE | | : 17dB MIN |
| REJECTION (30-100MHZ) | : 30dB MIN | |
| RETURN LOSS (5-10MHZ) | : 17dB MIN | |
| (MEASURED WITH SOURCE IMPEDANCE RANGING FROM 85-100Ω) | | |
| | TRANSMITTER TO RECEIVER CHARACTERISTICS | |
| CROSS TALK ATTEN (1-10MHZ) | : BETWEEN CHANNELS : 200VRMS FOR 1 MINUTE | : 30dB MIN |
| *REFERENCED TO FILTER OUTPUT @ 5.0MHZ. | PINS 1 & 3 TO 6 & 8 1 & 3 TO 9 & 11 6 & 8 TO 14 & 16 | |

Mechanical



WEBSITE www.valorinc.com E-MAIL marketing@valorinc.com

NORTH AMERICA
tel 1-800-31 VALOR
fax 619-537-2525

ASIA/PACIFIC
tel +852-2953-1000
fax +852-2953-1333

EUROPE
tel +44-1727-824 875
fax +44-1727-824 898