

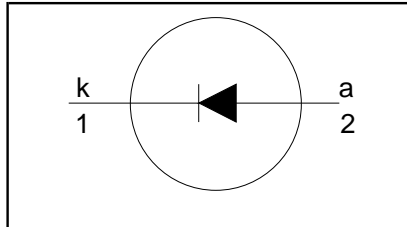
## Rectifier diodes Schottky barrier

## PBYL2025 series

### FEATURES

- Low forward volt drop
- Fast switching
- Reverse surge capability
- High thermal cycling performance
- Low thermal resistance

### SYMBOL



### QUICK REFERENCE DATA

$$V_R = 20 \text{ V} / 25 \text{ V}$$

$$I_{F(AV)} = 20 \text{ A}$$

$$V_F \leq 0.43 \text{ V}$$

### GENERAL DESCRIPTION

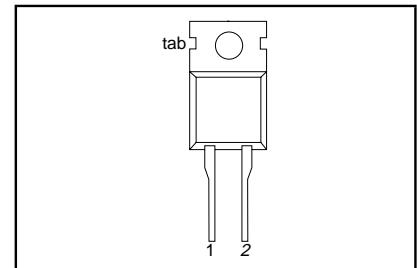
Schottky rectifier diodes intended for use as output rectifiers in low voltage, high frequency switched mode power supplies.

The PBYL2025 series is supplied in the SOD59 (TO220AC) conventional leaded package.

### PINNING

PIN	DESCRIPTION
1	cathode
2	anode
tab	cathode

### SOD59 (TO220AC)



### LIMITING VALUES

Limiting values in accordance with the Absolute Maximum System (IEC 134)

SYMBOL	PARAMETER	CONDITIONS	MIN.	MAX.		UNIT
$V_{RRM}$	Peak repetitive reverse voltage	PBYL20 $T_{mb} \leq 120 \text{ }^\circ\text{C}$	-	20	25	V
$V_{RWM}$	Working peak reverse voltage		-	20	25	V
$V_R$	Continuous reverse voltage		-	20	25	V
$I_{F(AV)}$	Average rectified forward current	square wave; $\delta = 0.5$ ; $T_{mb} \leq 131 \text{ }^\circ\text{C}$	-	20		A
$I_{FRM}$	Repetitive peak forward current	square wave; $\delta = 0.5$ ; $T_{mb} \leq 131 \text{ }^\circ\text{C}$	-	40		A
$I_{FSM}$	Non-repetitive peak forward current	$t = 10 \text{ ms}$	-	180		A
		$t = 8.3 \text{ ms}$	-	200		A
$I_{RRM}$	Peak repetitive reverse surge current	sinusoidal; $T_j = 125 \text{ }^\circ\text{C}$ prior to surge; with reapplied $V_{RRM(max)}$ pulse width and repetition rate limited by $T_{jmax}$	-	2		A
$T_j$	Operating junction temperature		-	150		$^\circ\text{C}$
$T_{stg}$	Storage temperature		- 65	175		$^\circ\text{C}$

**Rectifier diodes  
Schottky barrier**
**PBYL2025 series**
**THERMAL RESISTANCES**

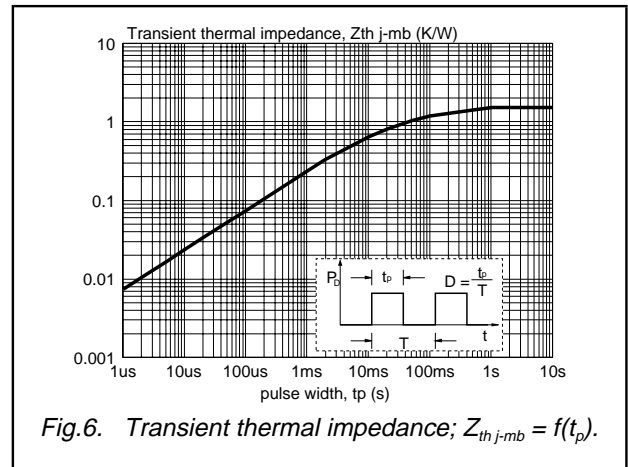
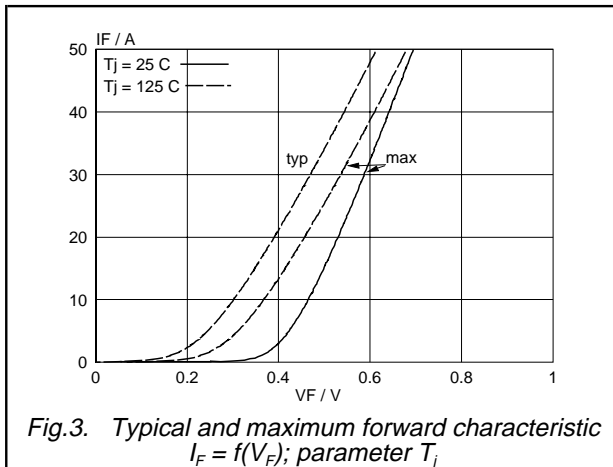
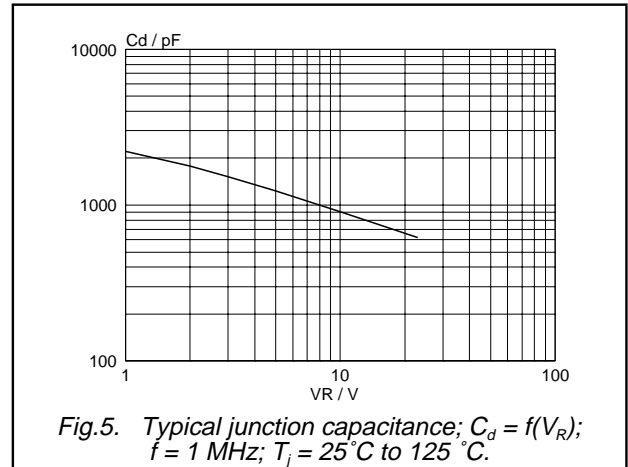
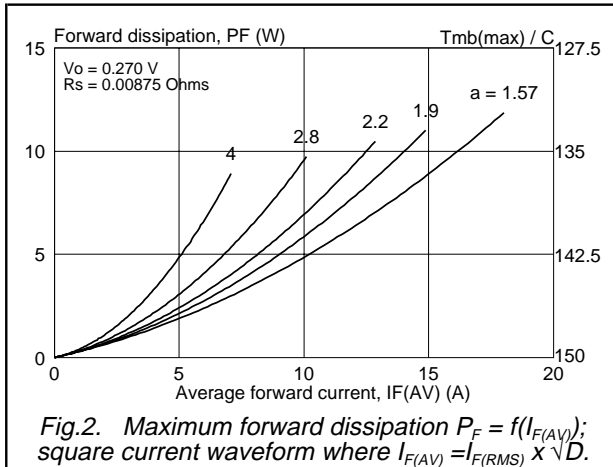
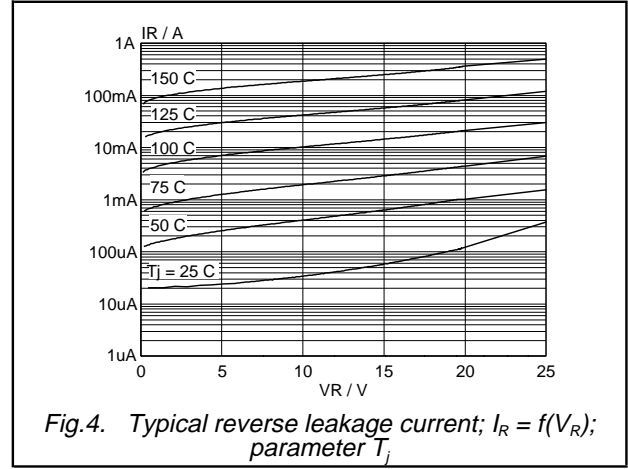
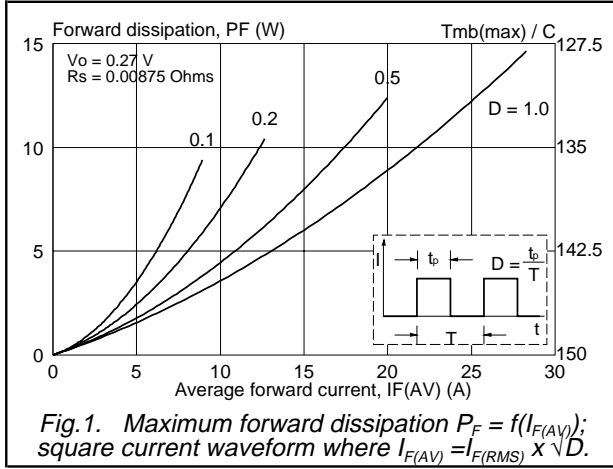
SYMBOL	PARAMETER	CONDITIONS	MIN.	TYP.	MAX.	UNIT
$R_{th\ j-mb}$	Thermal resistance junction to mounting base	in free air	-	-	1.5	K/W
$R_{th\ j-a}$	Thermal resistance junction to ambient		-	60	-	K/W

**ELECTRICAL CHARACTERISTICS**
 $T_j = 25\text{ °C}$  unless otherwise specified

SYMBOL	PARAMETER	CONDITIONS	MIN.	TYP.	MAX.	UNIT
$V_F$	Forward voltage	$I_F = 20\text{ A}; T_j = 150\text{ °C}$	-	0.36	0.43	V
		$I_F = 20\text{ A}; T_j = 125\text{ °C}$	-	0.39	0.45	V
		$I_F = 40\text{ A}; T_j = 125\text{ °C}$	-	0.55	0.62	V
		$I_F = 40\text{ A}$	-	0.59	0.65	V
$I_R$	Reverse current	$V_R = V_{RWM}$	-	0.4	10	mA
		$V_R = V_{RWM}; T_j = 100\text{ °C}$	-	30	60	mA
$C_d$	Junction capacitance	$V_R = 5\text{ V}; f = 1\text{ MHz}; T_j = 25\text{ °C to }125\text{ °C}$	-	1230	-	pF

Rectifier diodes  
Schottky barrier

PBYL2025 series



Rectifier diodes  
Schottky barrier

PBYL2025 series

**MECHANICAL DATA**

*Dimensions in mm*

*Net Mass: 2 g*

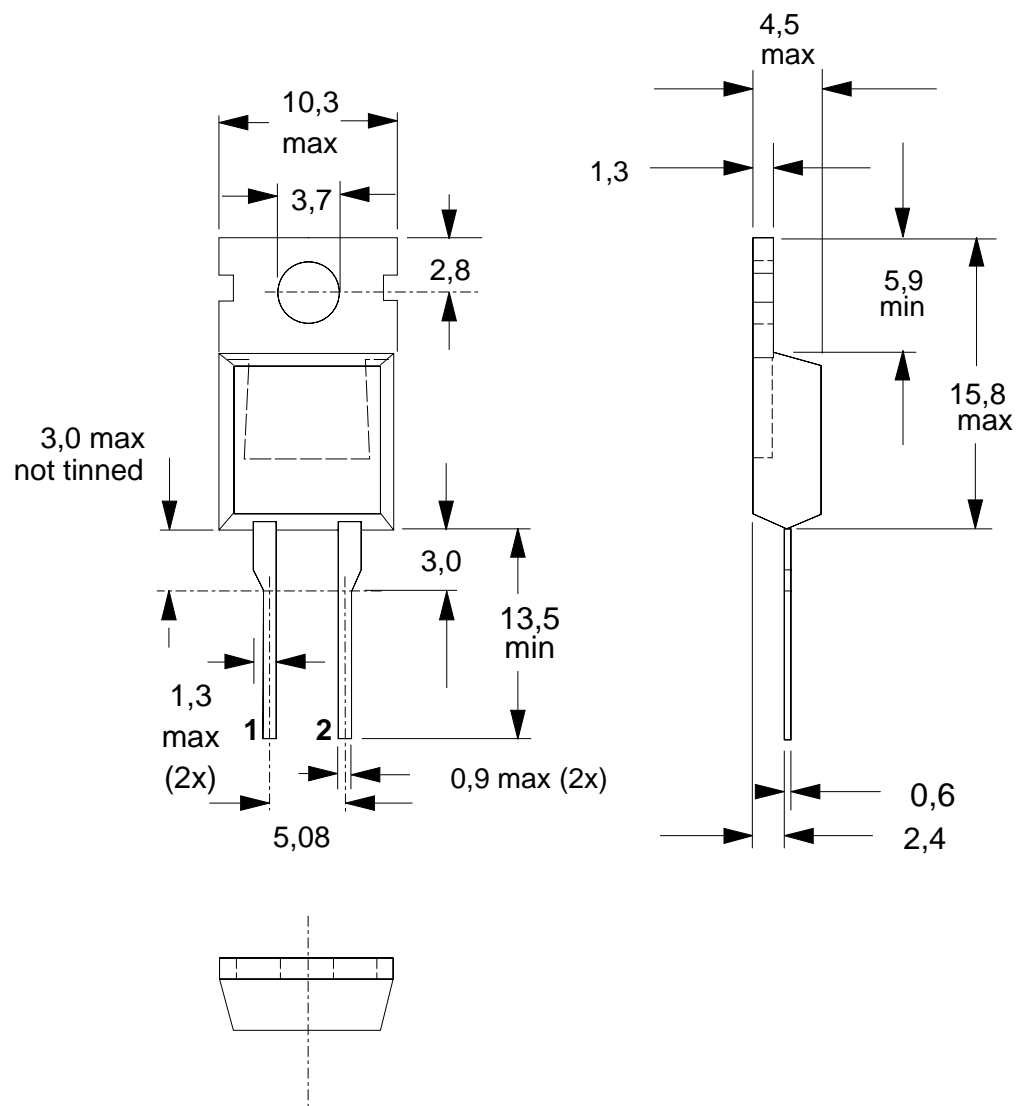


Fig.7. SOD59 (TO220AC). pin 1 connected to mounting base.

**Notes**

1. Refer to mounting instructions for TO220 envelopes.
2. Epoxy meets UL94 V0 at 1/8".

---

**Rectifier diodes  
Schottky barrier**


---

**PBYL2025 series**


---

**DEFINITIONS**

<b>Data sheet status</b>	
Objective specification	This data sheet contains target or goal specifications for product development.
Preliminary specification	This data sheet contains preliminary data; supplementary data may be published later.
Product specification	This data sheet contains final product specifications.
<b>Limiting values</b>	
Limiting values are given in accordance with the Absolute Maximum Rating System (IEC 134). Stress above one or more of the limiting values may cause permanent damage to the device. These are stress ratings only and operation of the device at these or at any other conditions above those given in the Characteristics sections of this specification is not implied. Exposure to limiting values for extended periods may affect device reliability.	
<b>Application information</b>	
Where application information is given, it is advisory and does not form part of the specification.	
© <b>Philips Electronics N.V. 1998</b>	
All rights are reserved. Reproduction in whole or in part is prohibited without the prior written consent of the copyright owner.	
The information presented in this document does not form part of any quotation or contract, it is believed to be accurate and reliable and may be changed without notice. No liability will be accepted by the publisher for any consequence of its use. Publication thereof does not convey nor imply any license under patent or other industrial or intellectual property rights.	

**LIFE SUPPORT APPLICATIONS**

These products are not designed for use in life support appliances, devices or systems where malfunction of these products can be reasonably expected to result in personal injury. Philips customers using or selling these products for use in such applications do so at their own risk and agree to fully indemnify Philips for any damages resulting from such improper use or sale.