

PART NUMBER CODING

INSULATOR MATERIAL

P= PBT
 OPERATING TEMP: -65°C TO +125°C
 PROCESSING TEMP: 260°C FOR 10 SECS MAX

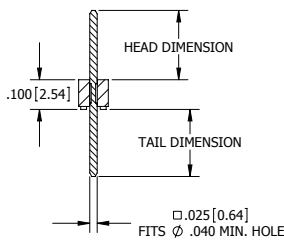
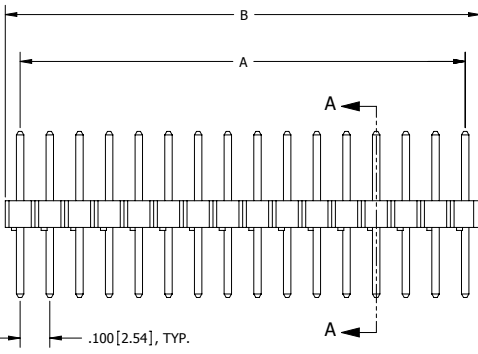
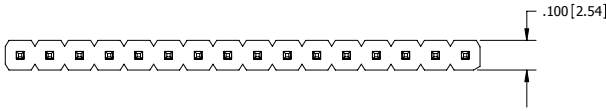
G= PA9T
 OPERATING TEMP: -65°C TO +150°C
 PROCESSING TEMP: 260°C FOR 120 SECS MAX

TERMINATION TYPE

NUMBER OF POSITIONS PER ROW
 (01 THRU 36)

PLATING

ALL PLATINGS HAVE .000050" NICKEL UNDERPLATE
 CONTACT SURFACE TERMINATION
 B = .000010" GOLD .000100" PURE TIN, MATTE
 C = .000030" GOLD .000100" PURE TIN, MATTE
 E = .000100" PURE TIN, MATTE OVERALL



G _ C _ _ S _ _ N ; P _ C _ _ S _ _ N

STRAIGHT

- NOTES:**
1. INSULATOR MATERIAL: SEE PART NUMBER CODING
 2. CONTACT MATERIAL: PHOSPHOR BRONZE
 3. PLATING: SEE PART NUMBER CODING
 4. UL FLAMMABILITY RATING: 94V-0
 5. VOLTAGE RATING: 600 VDC MINIMUM AT SEA LEVEL.
 6. CURRENT RATING: 3 AMPS
 7. CONTACT RESISTANCE: 30 MILLIOHMS MAX.
 8. INSULATION RESISTANCE: 5000 MEGOHMS MIN.
 9. MOISTURE SENSITIVITY LEVEL= 1

REVISIONS

REV.	ECO. NO	DESCRIPTION	DATE	BY
A	572	INITIAL RELEASE	3/21/05	AN
B	1144	ADD ALL TERMINATION TYPES	9/14/2006	MV
C	2078	UPDATE TEMPERATURE TO 150°C FOR 'G' MTL, CORRECT NOTE 6 & 7, ADD NEW TERMINATION TYPES AJ, AK, FF, FG, FH, FI, FJ, ZB, ZI, ZJ, ZO, ZQ, ZR, COMBINED 'P' MTL IN P/N CODING (DWG 10640 OBSOLETE)	11/12/2009	JH

TERMINATION TYPE

STRAIGHT

CODE	HEAD DIMENSION		TAIL DIMENSION	
	±.008 [0.20]	±.010 [0.25]	±.008 [0.20]	±.010 [0.25]
AA	.230[5.84]	.120[3.05]		
AB	.230[5.84]	.230[5.84]		
AC	.230[5.84]	.320[8.13]		
AD	.230[5.84]	.420[10.67]		
AE	.230[5.84]	.520[13.21]		
AF	.230[5.84]	.620[15.75]		
AG	.230[5.84]	.720[18.29]		
AH	.230[5.84]	.820[20.83]		
AJ	.230[5.84]	.900[22.86]		
AJ	.230[5.84]	1.000[25.40]		
AK	.230[5.84]	.035[0.89]		
FA	.318[8.08]	.120[3.05]		
FB	.318[8.08]	.220[5.59]		
FC	.318[8.08]	.320[8.13]		
FD	.318[8.08]	.420[10.67]		
FE	.318[8.08]	.520[13.21]		
FF	.318[8.08]	.620[15.75]		
FG	.318[8.08]	.710[18.29]		
FH	.318[8.08]	.810[20.83]		
FI	.318[8.08]	.910[23.37]		
FJ	.318[8.08]	.050[1.27]		
ZA	.120[3.05]	.120[3.05]		
ZB	.120[3.05]	.095[2.41]		
ZC	.120[3.05]	.260[6.60]		
ZD	.120[3.05]	.610[15.49]		
ZI	.520[13.21]	.110[2.79]		
ZJ	.720[18.29]	.110[2.79]		
ZO	.820[20.83]	.110[2.79]		
ZQ	1.020[25.91]	.110[2.79]		
ZR	1.220[30.99]	.110[2.79]		
C01S_N	0.000	0.00	0.100	2.54
C02S_N	0.100	2.54	0.200	5.08
C03S_N	0.200	5.08	0.300	7.62
C04S_N	0.300	7.62	0.400	10.16
C05S_N	0.400	10.16	0.500	12.70
C06S_N	0.500	12.70	0.600	15.24
C07S_N	0.600	15.24	0.700	17.78
C08S_N	0.700	17.78	0.800	20.32
C09S_N	0.800	20.32	0.900	22.86
C10S_N	0.900	22.86	1.000	25.40
C11S_N	1.000	25.40	1.100	27.94
C12S_N	1.100	27.94	1.200	30.48
C13S_N	1.200	30.48	1.300	33.02
C14S_N	1.300	33.02	1.400	35.56
C15S_N	1.400	35.56	1.500	38.10
C16S_N	1.500	38.10	1.600	40.64
C17S_N	1.600	40.64	1.700	43.18
C18S_N	1.700	43.18	1.800	45.72
C19S_N	1.800	45.72	1.900	48.26
C20S_N	1.900	48.26	2.000	50.80
C21S_N	2.000	50.80	2.100	53.34
C22S_N	2.100	53.34	2.200	55.88
C23S_N	2.200	55.88	2.300	58.42
C24S_N	2.300	58.42	2.400	60.96
C25S_N	2.400	60.96	2.500	63.50
C26S_N	2.500	63.50	2.600	66.04
C27S_N	2.600	66.04	2.700	68.58
C28S_N	2.700	68.58	2.800	71.12
C29S_N	2.800	71.12	2.900	73.66
C30S_N	2.900	73.66	3.000	76.20
C31S_N	3.000	76.20	3.100	78.74
C32S_N	3.100	78.74	3.200	81.28
C33S_N	3.200	81.28	3.300	83.82
C34S_N	3.300	83.82	3.400	86.36
C35S_N	3.400	86.36	3.500	88.90
C36S_N	3.500	88.90	3.600	91.44

CUSTOMER COPY



RoHS COMPLIANT

UNLESS OTHERWISE SPECIFIED:
 DIMENSIONS ARE IN INCHES[MM]
 TOLERANCES:
 ANGULAR: ± .30°
 XX = ± .02 [.508]
 XXX = ± .005 [.127]
 XXXX = ± .0005 [.0127]
 SURFACE FINISH: 63 Ra
 REMOVE ALL BURRS AND SHARP EDGES .010 MAX
 INTERPRET DIMENSIONS AND GEOMETRIC TOLERANCING PER: ANSI Y14.5M-1994

DATE	NAME	Arts

DESCRIPTION: 100' CC, HEADER, STRAIGHT

PART NUMBER: G_C_S_N;P_C_S_N

SIZE: C DWG. NO. C10436

SCALE: 4:1

SHEET 1 OF 1