

SAW Filter for WiMAX Base Station For Industrial Use

■ Features

- Excellent guaranteed attenuation.
- With a low-band ripple.
- Compact.

Pb
Free

RoHS Compliant
Directive 2002/95/EC

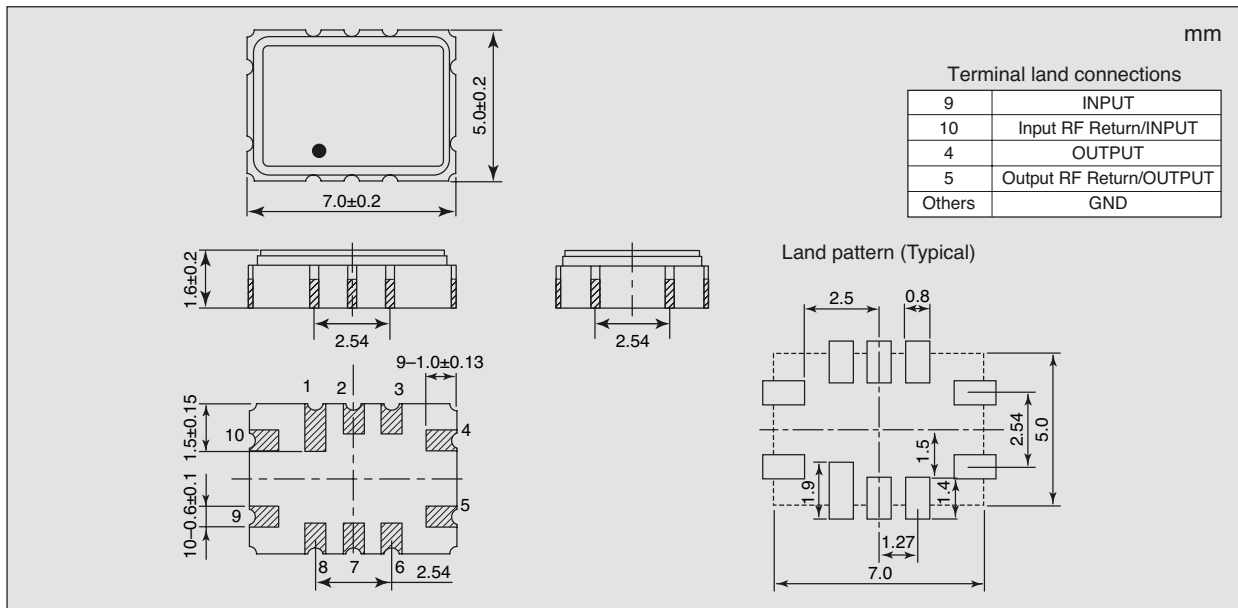


■ Specifications

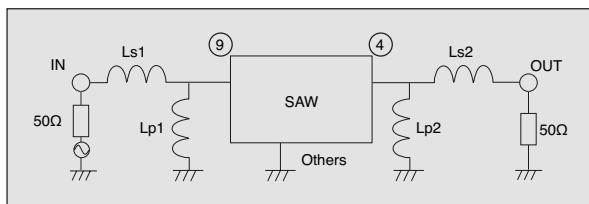
Model	WFA25B0456CF			
Item	min.	typ.	max.	
Nominal frequency : f ₀ (MHz)	–	456	–	
Minimal insertion loss (dB)	–	8.60	13.0	
1-dB passband width (MHz)	3.15	3.652	3.75	
Pass-band ripple (dB) f ₀ ±1.575 MHz	–	0.52	1.0	
Group delay deviation (ns) f ₀ ±1.575 MHz	–	188.2	200	
Return loss (dB) f ₀ ±1.575 MHz	10	15.0	–	
Guaranteed attenuation (dB) (from the minimal insertion loss)	f ₀ –200 MHz to f ₀ –96 MHz	40	67.2	–
	f ₀ –96 MHz to f ₀ –47 MHz	50	60.8	–
	f ₀ –47 MHz to f ₀ –3.5 MHz	40	43.8	–
	f ₀ +3.5 MHz to f ₀ +192 MHz	40	41.5	–
	f ₀ +192 MHz to f ₀ +200 MHz	30	74.2	–
Operating temperature range (°C)	–40 to +85			
Terminating impedance (Single end) (Ω)	50			
Terminating impedance (Balanced) (Ω)	50			

SAW Filter for WiMAX Base Station For Industrial Use

■ Dimensions



■ Matching Circuit



■ Characteristics

