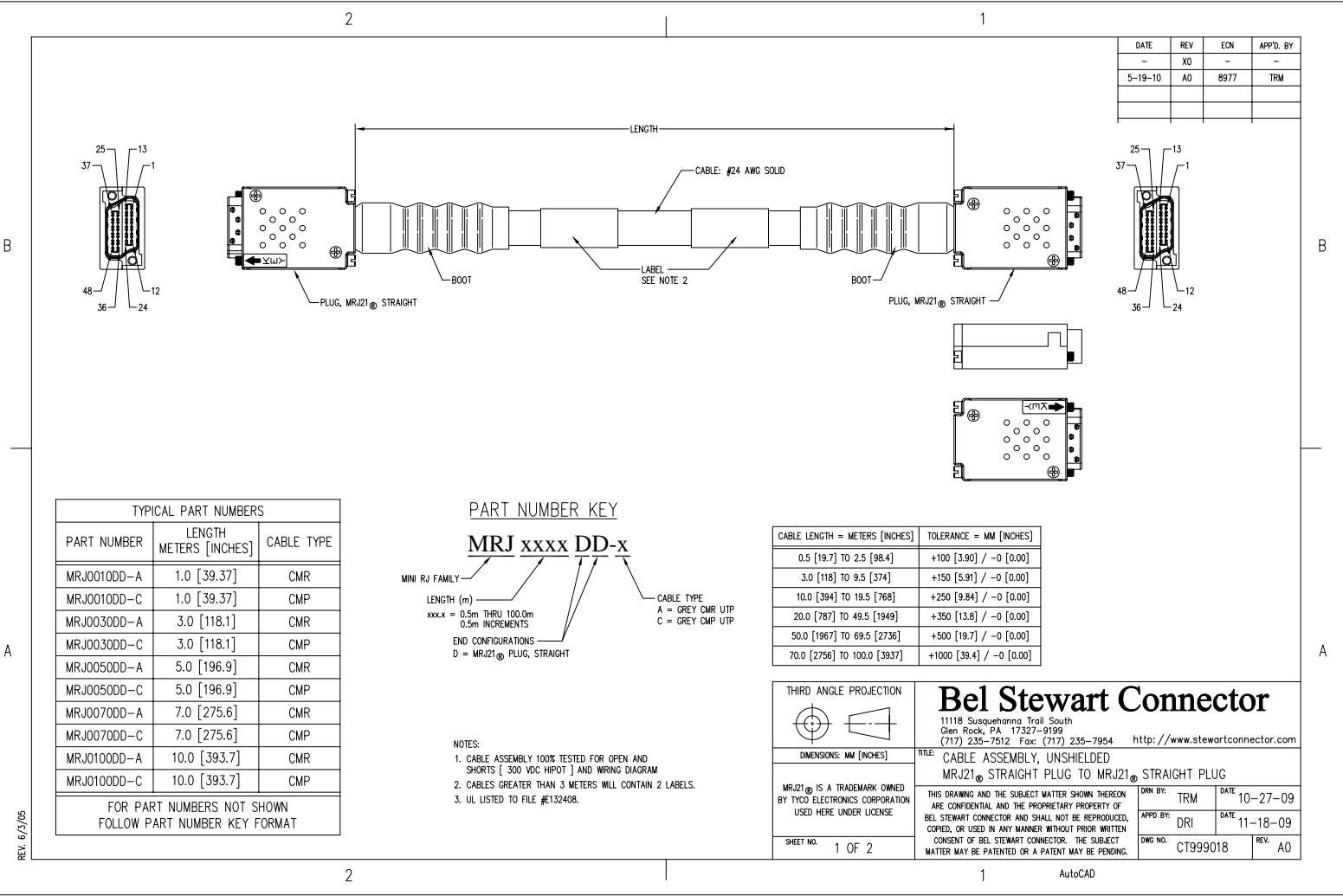


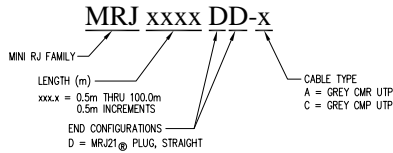
DATE	REV	ECN	APP'D. BY
5-19-10	A0	8977	TRM



TYPICAL PART NUMBERS		
PART NUMBER	LENGTH METERS [INCHES]	CABLE TYPE
MRJ0010DD-A	1.0 [39.37]	CMR
MRJ0010DD-C	1.0 [39.37]	CMP
MRJ0030DD-A	3.0 [118.1]	CMR
MRJ0030DD-C	3.0 [118.1]	CMP
MRJ0050DD-A	5.0 [196.9]	CMR
MRJ0050DD-C	5.0 [196.9]	CMP
MRJ0070DD-A	7.0 [275.6]	CMR
MRJ0070DD-C	7.0 [275.6]	CMP
MRJ0100DD-A	10.0 [393.7]	CMR
MRJ0100DD-C	10.0 [393.7]	CMP

FOR PART NUMBERS NOT SHOWN
FOLLOW PART NUMBER KEY FORMAT

PART NUMBER KEY

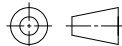


CABLE LENGTH = METERS [INCHES]	TOLERANCE = MM [INCHES]
0.5 [19.7] TO 2.5 [98.4]	+100 [3.90] / -0 [0.00]
3.0 [118] TO 9.5 [374]	+150 [5.91] / -0 [0.00]
10.0 [394] TO 19.5 [766]	+250 [9.84] / -0 [0.00]
20.0 [787] TO 49.5 [1949]	+350 [13.8] / -0 [0.00]
50.0 [1967] TO 69.5 [2736]	+500 [19.7] / -0 [0.00]
70.0 [2756] TO 100.0 [3937]	+1000 [39.4] / -0 [0.00]

NOTES:

- CABLE ASSEMBLY 100% TESTED FOR OPEN AND SHORTS [300 VDC HIPOT] AND WIRING DIAGRAM
- CABLES GREATER THAN 3 METERS WILL CONTAIN 2 LABELS.
- UL LISTED TO FILE #E132408.

THIRD ANGLE PROJECTION



DIMENSIONS: MM [INCHES]

MRJ21® IS A TRADEMARK OWNED BY TYCO ELECTRONICS CORPORATION USED HERE UNDER LICENSE

SHEET NO. 1 OF 2

Bel Stewart Connector

11118 Susquehanna Trail South
Glen Rock, PA 17327-9199
(717) 235-7512 Fax: (717) 235-7954 <http://www.stewartconnector.com>

TITLE: CABLE ASSEMBLY, UNSHIELDED
MRJ21® STRAIGHT PLUG TO MRJ21® STRAIGHT PLUG

THIS DRAWING AND THE SUBJECT MATTER SHOWN THEREON ARE CONFIDENTIAL AND THE PROPRIETARY PROPERTY OF BEL STEWART CONNECTOR AND SHALL NOT BE REPRODUCED, COPIED, OR USED IN ANY MANNER WITHOUT PRIOR WRITTEN CONSENT OF BEL STEWART CONNECTOR. THE SUBJECT MATTER MAY BE PATENTED OR A PATENT MAY BE PENDING.

DRN BY: TRM	DATE: 10-27-09
APP'D BY: DRI	DATE: 11-18-09
DWG NO. CT999018	REV. A0

AutoCAD

REV. 6/2/05

MRJ21[®] MRJ21[®]

1 ——— WHT/BLU ——— 1
 2 ——— BLU/WHT ——— 2
 13 ——— WHT/ORG ——— 13
 14 ——— ORG/WHT ——— 14

3 ——— WHT/GRN ——— 3
 4 ——— GRN/WHT ——— 4
 15 ——— WHT/BRN ——— 15
 16 ——— BRN/WHT ——— 16

25 ——— WHT/GRY ——— 25
 26 ——— GRY/WHT ——— 26
 37 ——— RED/BLU ——— 37
 38 ——— BLU/RED ——— 38

27 ——— RED/ORG ——— 27
 28 ——— ORG/RED ——— 28
 39 ——— RED/GRN ——— 39
 40 ——— GRN/RED ——— 40

5 ——— RED/ BRN ——— 5
 6 ——— BRN/RED ——— 6
 17 ——— RED/GRY ——— 17
 18 ——— GRY/RED ——— 18

7 ——— BLK/BLU ——— 7
 8 ——— BLU/BLK ——— 8
 19 ——— BLK/ORG ——— 19
 20 ——— ORG/BLK ——— 20

MRJ21[®] MRJ21[®]

29 ——— BLK/GRN ——— 29
 30 ——— GRN/BLK ——— 30
 41 ——— BLK/BRN ——— 41
 42 ——— BRN/BLK ——— 42

31 ——— BLK/GRY ——— 31
 32 ——— GRY/BLK ——— 32
 43 ——— YEL/BLU ——— 43
 44 ——— BLU/YEL ——— 44

9 ——— YEL/ORG ——— 9
 10 ——— ORG/YEL ——— 10
 21 ——— YEL/GRN ——— 21
 22 ——— GRN/YEL ——— 22

11 ——— YEL/BRN ——— 11
 12 ——— BRN/YEL ——— 12
 23 ——— YEL/GRY ——— 23
 24 ——— GRY/YEL ——— 24

33 ——— VIO/BLU ——— 33
 34 ——— BLU/VIO ——— 34
 45 ——— VIO/ORG ——— 45
 46 ——— ORG/VIO ——— 46

35 ——— VIO/GRN ——— 35
 36 ——— GRN/VIO ——— 36
 47 ——— VIO/BRN ——— 47
 48 ——— BRN/VIO ——— 48

WIRING PATTERN

THIRD ANGLE PROJECTION				<h2>Bel Stewart Connector</h2> <p>11118 Susquehanna Trail South Glen Rock, PA 17327-9199 (717) 235-7512 Fax: (717) 235-7954 http://www.stewartconnector.com</p>	
DIMENSIONS: MM [INCHES]				TITLE: CABLE ASSEMBLY, UNSHIELDED MRJ21 [®] STRAIGHT PLUG TO MRJ21 [®] STRAIGHT PLUG	
MRJ21 [®] IS A TRADEMARK OWNED BY TYCO ELECTRONICS CORPORATION USED HERE UNDER LICENSE		THIS DRAWING AND THE SUBJECT MATTER SHOWN THEREON ARE CONFIDENTIAL AND THE PROPRIETARY PROPERTY OF BEL STEWART CONNECTOR AND SHALL NOT BE REPRODUCED, COPIED, OR USED IN ANY MANNER WITHOUT PRIOR WRITTEN CONSENT OF BEL STEWART CONNECTOR. THE SUBJECT MATTER MAY BE PATENTED OR A PATENT MAY BE PENDING.		DRN BY: TRM APPD BY: DRI DWG NO. CT999018	DATE: 10-27-09 DATE: 11-18-09 REV: A0
SHEET NO. 2 OF 2				AutoCAD	

REV. 6/2/05