

PLEASE CHECK WWW.MOLEX.COM FOR LATEST PART INFORMATION

Part Number: [0850010488](#)
Status: **Active**
Overview: [din_41612](#)
Description: 2.54mm (.100") Pitch DIN 41612 B Style Male Header, PCT, Right Angle, Through Hole, 0.30µm (12µ") Selective Gold (Au) Plating, 64 Circuits, without Mounting Clips, No Flux Proof

Documents:

[Drawing \(PDF\)](#) [RoHS Certificate of Compliance \(PDF\)](#)
[Product Specification PS-85003-0001 \(PDF\)](#)

Agency Certification

CSA LR19980
 UL E29179

General

Product Family Backplane Connectors
 Series [85001](#)
 Application Backplane
 Comments No Mounting Clips. No Flux Proof. 3.0mm(.118") 4 First-Mate-Last- Break Contacts at Y and Z.
 Component Type PCB Header
 Overview [din_41612](#)
 Product Name IEC 603-2/DIN 41612
 Style B

Physical

Circuits (Loaded) 64
 Circuits (maximum) 64
 Circuits Detail Contact Positions: A:a3-a30; B:b3-b30; Z:a1,a2,a31,a32; Y:b1,b2,b31,b32
 Color - Resin Natural
 Durability (mating cycles max) 50
 First Mate / Last Break Yes
 Flammability 94V-0
 Guide to Mating Part No
 Keying to Mating Part Yes
 Material - Metal Brass
 Material - Plating Mating Gold
 Material - Plating Termination Tin
 Material - Resin Polyester
 Number of Columns 16
 Number of Pairs Open Pin Field
 Number of Rows 2
 Orientation Right Angle
 PC Tail Length (in) 0.154 In
 PC Tail Length (mm) 3.90 mm
 PCB Locator No
 PCB Retention Yes
 Packaging Type Carton
 Pitch - Mating Interface (in) 0.100 In
 Pitch - Mating Interface (mm) 2.54 mm
 Pitch - Term. Interface (in) 0.100 In
 Pitch - Term. Interface (mm) 2.54 mm
 Plating min: Mating (µin) 12
 Plating min: Mating (µm) 0.30

EU RoHS **China RoHS**
Compliance Status
Not Reviewed
REACH SVHC
Not Reviewed
Halogen-Free
Status
Not Reviewed
Need more information on product environmental compliance?

Email productcompliance@molex.com
 For a multiple part number RoHS Certificate of Compliance, [click here](#)

Please visit the [Contact Us](#) section for any non-product compliance questions.

Search Parts in this Series
[85001Series](#)

Plating min: Termination (μ in)	98
Plating min: Termination (μ m)	2.5
Polarized to PCB	Yes
Stackable	No
Surface Mount Compatible (SMC)	No
Temperature Range - Operating	-55°C to +125°C
Termination Interface: Style	Through Hole

Electrical

Current - Maximum per Contact	1A
Data Rate	622.0 Mbps
Voltage - Maximum	250V AC (RMS)

Material Info

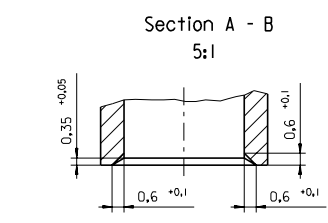
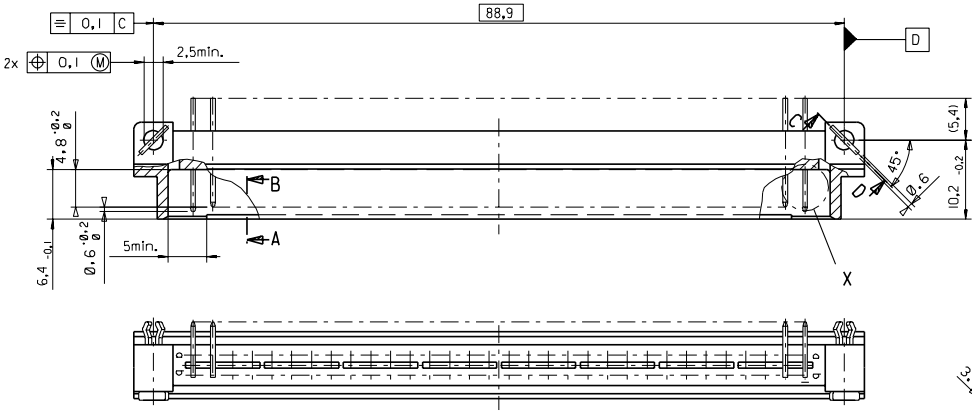
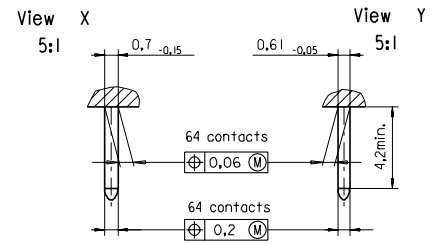
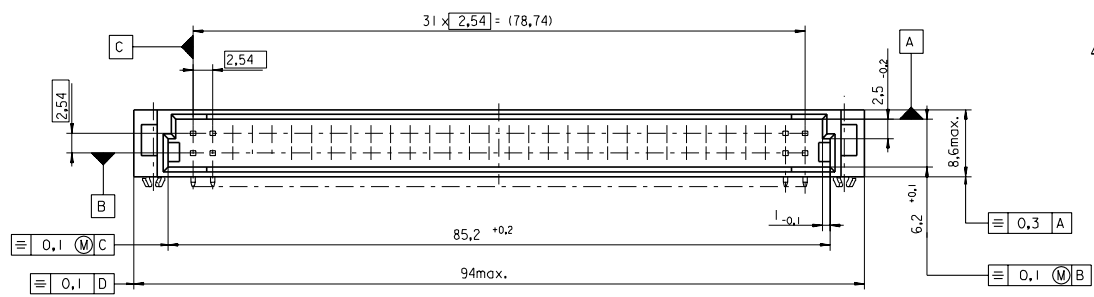
Reference - Drawing Numbers

Packaging Specification	PK-36507-001
Product Specification	PS-85003-0001
Sales Drawing	SDA-85001-0001, SDA-85001-0488

This document was generated on 05/17/2010

PLEASE CHECK WWW.MOLEX.COM FOR LATEST PART INFORMATION

PART NO.
DMC NO.



FIRST ANGLE PROJECTION		REVISE ONLY ON CAD SYSTEM		SH. REV.
first release see ECN No. 1687	UNLESS OTHERWISE SPECIFIED TOLERANCES: ANGULAR ± 2° INCH METRIC	DRWG BY Ca	SIGN	CAD/CAM PROJECT NAME 85001000 811
L TR FOR PREVIOUS REVISIONS SEE MRI LIST	3 PLACE ±	CHK'D BY KN	SIGN	TITLE 64 pos. Male connector acc. DIN 41612 style B Dimensions
	2 PLACE ±	APP'D BY	SIGN	
	DRAFT WHERE APPLICABLE MUST REMAIN WITHIN DIMENSIONS	SCALE 2:1		SHEET NO. DATE 1 OF 95/06/06
	DESIGN DIMENSION <input checked="" type="checkbox"/> MM <input type="checkbox"/> IN. EQUIVALENT DIMENSION <input type="checkbox"/> MM <input type="checkbox"/> IN.			PART NO. DWG NO. SDA-85001-0001
	IF TWO DIMENSIONS ARE SHOWN, THE UPPER IS THE DESIGN DIMENSION, LOWER IS SECONDARY			SIZE B

7132-1283

View on termination side

Y	Y	B	B	B	B	B	B	B	B	B	B	B	B	B	B	B	B	B	B	B	B	B	B	Y
Z	Z	A	A	A	A	A	A	A	A	A	A	A	A	A	A	A	A	A	A	A	A	A	A	Z

0 1 2 3 4 5 6 7 8 9 A B C D E F G H I J K L M N O P Q R S T U V W X Y Z

- A = 28 standard contacts L=3
- B = 28 standard contacts L=3
- Z = 4 FMLB contacts +0.6 L=3
- Y = 4 FMLB contacts +0.6 L=3
- S = 64 total number of contacts

Marking	Standard
Performance level	G3/0 = Contact area level 3 / Termination fin
Flux proof	no
Fixing clip	no
Dimensions	SDA-85001-0001 sht.1
Technical Data	PS-85003-0001

Y	G3/0	b1,2,3,132.
Z	G3/0	a1,2,3,132
B	G3/0	b3-30
A	G3/0	a3-30

Contact symbol Perform. level
Contact position number

ECN No. M61998-2842	REVISIONS	FOR PREVIOUS REVISIONS SEE MRI LIST	DRWG SIGN BY	CHK'D BY	APPO'D BY	SCALE	REVISE ONLY ON CAD SYSTEM	SH.	REV.
first release	LTR		Ca	Er	Fb				
UNLESS OTHERWISE SPECIFIED TOLERANCES: ANGULAR ± 2°			SIGN			MM	CAD/CAM PROJECT NAME	THIS DRAWING CONTAINS INFORMATION THAT IS PROPRIETARY TO MOLEX INC. & SHOULD NOT BE USED WITHOUT WRITTEN PERMISSION	
3 PLACE ±			±	SIGN			TITLE	64 pos. Male connector acc. DIN 41612 style B contacts arrangement	
2 PLACE ±			±	SIGN			MOLEX EUROPE		
1 PLACE ±			±	SIGN			SHEET NO. DATE		
DIRECT WHERE APPLICABLE MUST REMAIN WITHIN DIMENSIONS			DESIGN DIMENSION			MM	PART NO. DWG NO. SDA-85001-0488		
EQUIVALENT DIMENSION			IN.			MM	SHEET NO. DATE		
IF TWO DIMENSIONS ARE SHOWN THE UPPER IS THE DESIGN DIMENSION, LOWER IS SECONDARY			EQUIVALENT DIMENSION			IN.	1 OF 1 98/06/29		
SIZE			A						