

PLEASE CHECK WWW.MOLEX.COM FOR LATEST PART INFORMATION

Part Number: [0791098405](#)
Status: **Active**
Description: 2.00mm (.079") Pitch Milli-Grid™ Receptacle, Surface Mount, Vertical, Top/Bottom Entry, without Press-fit Plastic Pegs, with Cap, Embossed Tape on Reel, 0.38µm (15µ") Gold (Au) Selective, 12 Circuits, Leadfree

Documents:

[3D Model](#)
[Drawing \(PDF\)](#)

[Product Specification PS-79107 \(PDF\)](#)
[RoHS Certificate of Compliance \(PDF\)](#)

Agency Certification

CSA LR19980
UL E29179

General

Product Family PCB Receptacles
Series [79109](#)
Application Board-to-Board
Comments With Cap
Product Name Milli-Grid™

Physical

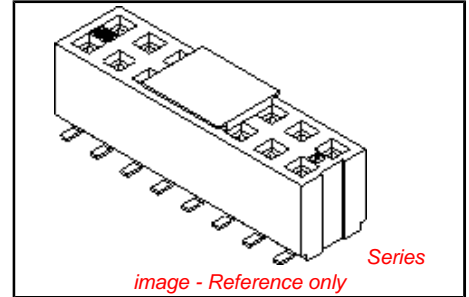
Circuits (Loaded) 12
Color - Resin Black, Natural
Durability (mating cycles max) 50
Flammability 94V-0
Glow-Wire Compliant No
Lock to Mating Part None
Material - Metal Phosphor Bronze
Material - Plating Mating Gold
Material - Plating Termination Tin
Material - Resin High Temperature Thermoplastic
Number of Rows 2
Orientation Vertical
PCB Locator No
PCB Retention None
Packaging Type Embossed Tape on Reel
Pitch - Mating Interface (in) 0.079 In
Pitch - Mating Interface (mm) 2.00 mm
Plating min: Mating (µin) 15
Plating min: Mating (µm) 0.38
Plating min: Termination (µin) 75
Plating min: Termination (µm) 1.875
Polarized to Mating Part No
Polarized to PCB No
Surface Mount Compatible (SMC) N/A
Temperature Range - Operating -55°C to +105°C
Termination Interface: Style Surface Mount

Electrical

Current - Maximum per Contact 1A
Voltage - Maximum 125V

Solder Process Data

Duration at Max. Process Temperature (seconds) 10
Lead-free Process Capability Reflow Capable (SMT only)
Max. Cycles at Max. Process Temperature 1



EU RoHS

ELV and RoHS Compliant

REACH SVHC

Not Reviewed

Halogen-Free

Status

Not Reviewed

Need more information on product environmental compliance?

Email productcompliance@molex.com
For a multiple part number RoHS Certificate of Compliance, [click here](#)

Please visit the [Contact Us](#) section for any non-product compliance questions.

China RoHS



Search Parts in this Series

[79109Series](#)

Mates With

[87833](#) , [87832](#) , [87831](#) , [87758](#) , [87759](#) , [87760](#)

Process Temperature max. C	260
----------------------------	-----

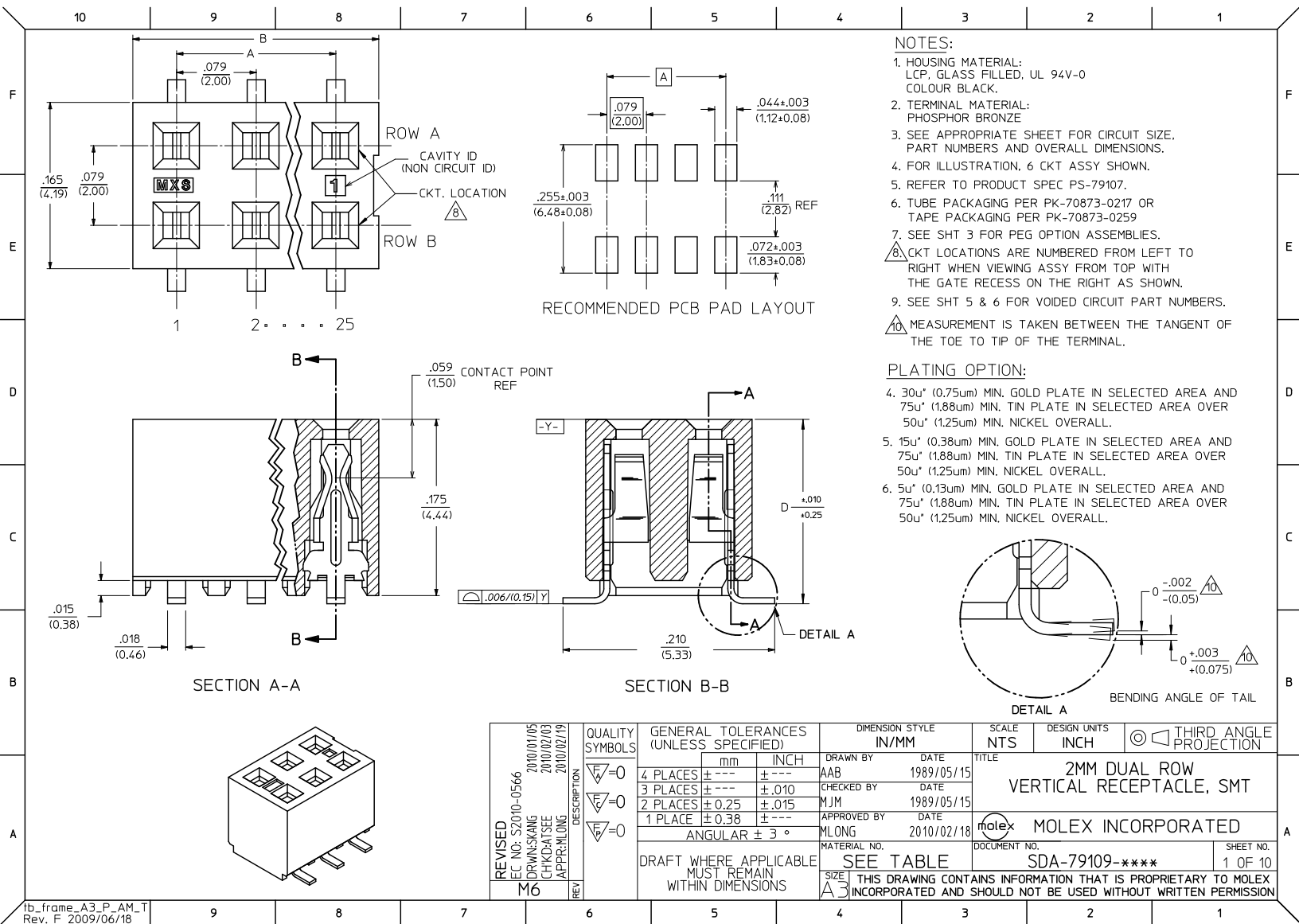
Material Info

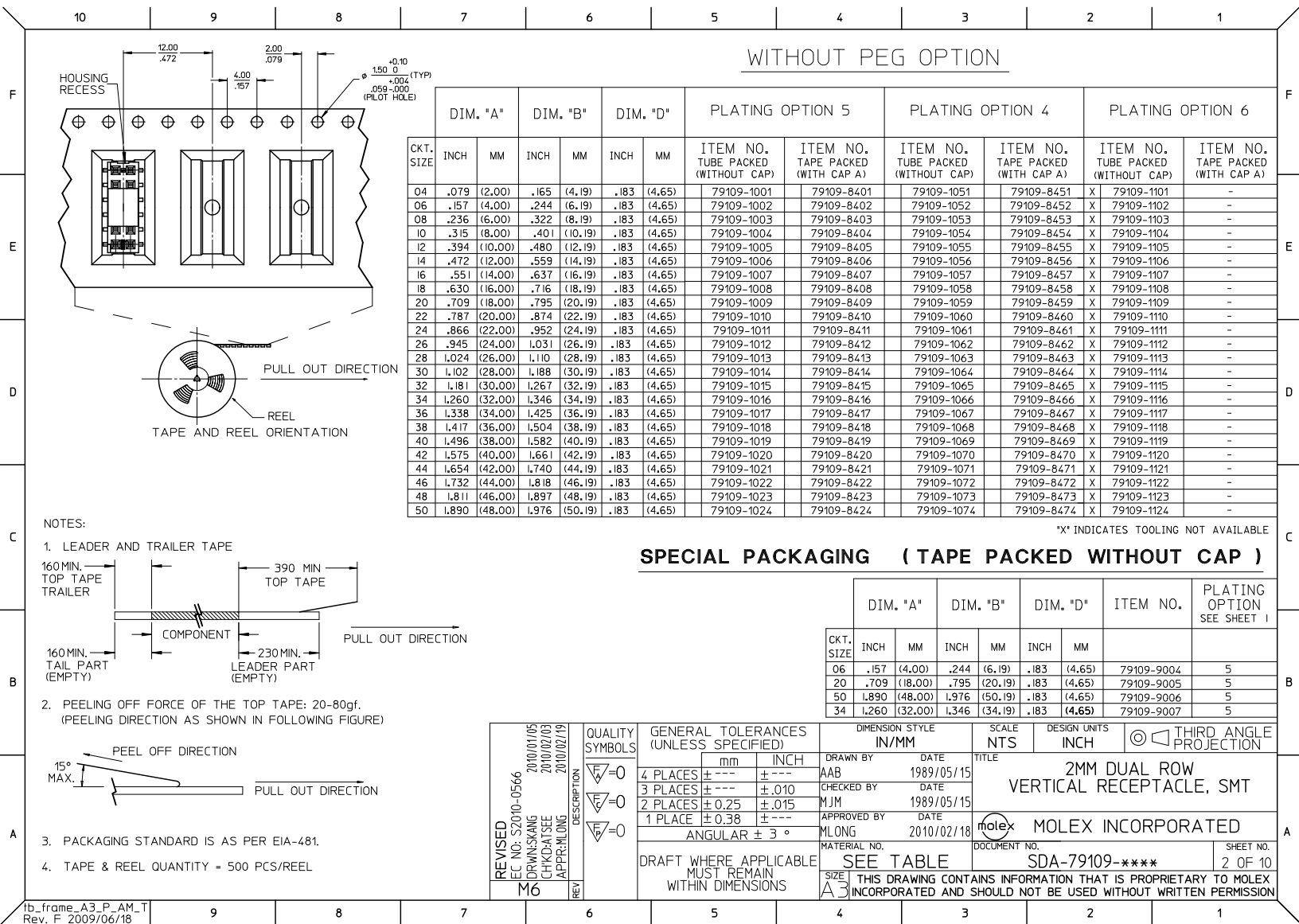
Reference - Drawing Numbers

Product Specification	PS-79107
Sales Drawing	SDA-79109-****

This document was generated on 03/18/2010

PLEASE CHECK WWW.MOLEX.COM FOR LATEST PART INFORMATION





ASSEMBLIES WITHOUT PEGS






VOIDED CIRCUIT OPTION

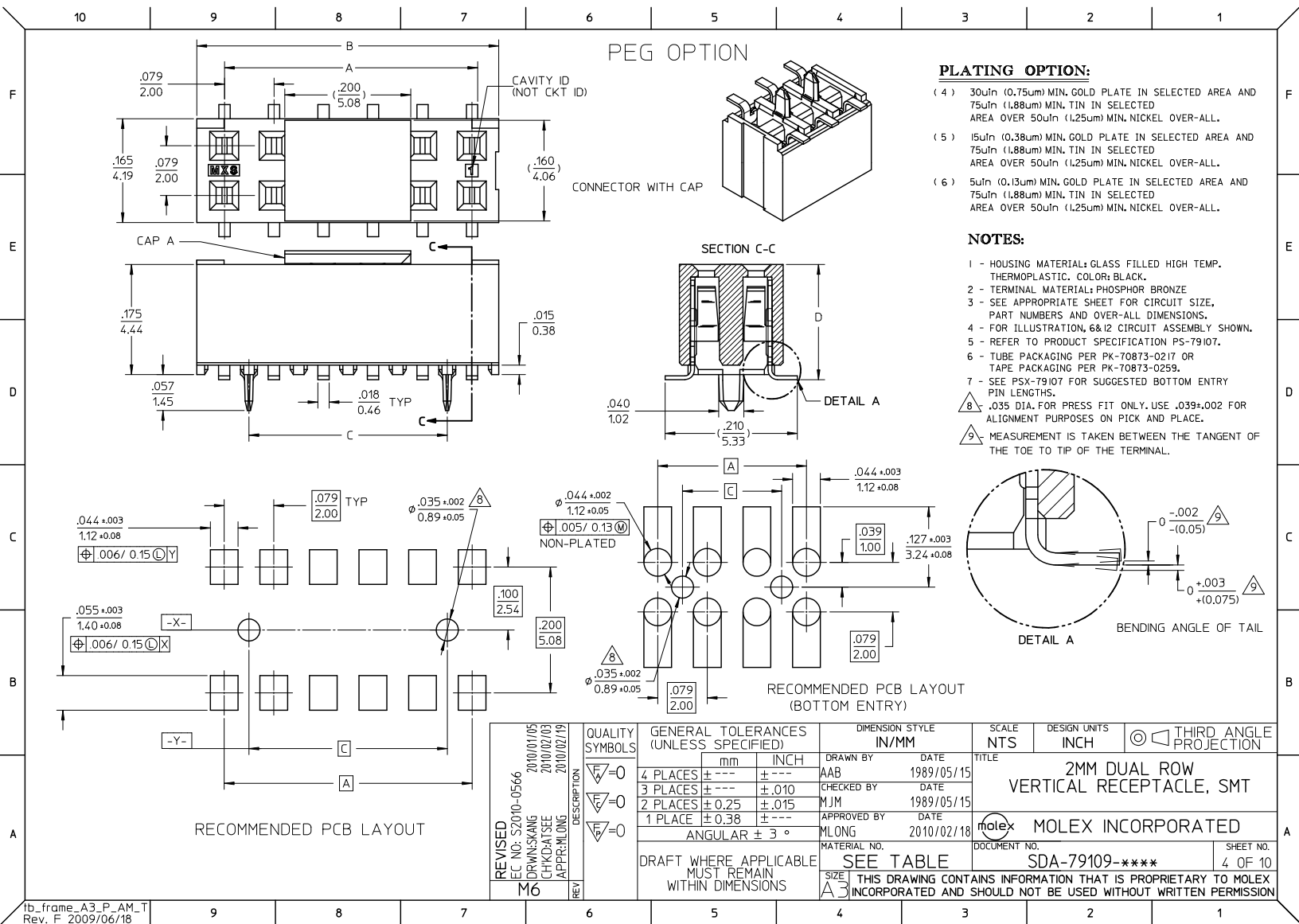
CKT. SIZE	ASSEMBLY (WITHOUT CAP IN TUBE)	VOID LOCATION(S) SEE SHEET 1 FOR CONVENTION		PLATING OPTION	DIM. "A"		DIM. "B"		DIM. "D"	
	PART NUMBER	ROW	CKT. NO.(S)		INCH	MM	INCH	MM	INCH	MM
22	79109-5011	A	2	4	.787	(20.00)	.874	(22.19)	.183	(4.65)
6	79109-5012	A	2	5	.157	(4.00)	.244	(6.19)	.183	(4.65)

CKT SIZE	ASSEMBLY (WITH CAP A IN T&R)	VOID LOCATION(S) SEE SHEET 1 FOR CONVENTION		PLATING OPTION	DIM A		DIM B		DIM D	
	PART NUMBER	ROW	CKT NO.		INCH	MM	INCH	MM	INCH	MM
50	79109-8924	A	13, 23	5	1.890	(48.00)	1.976	(50.19)	.183	(4.65)
		B	23							

NOTES:

1. TERMINALS WILL BE PRESENT IN VOIDED LOCATIONS. HOWEVER, PIN WINDOWS WILL BE CLOSED.
2. VOIDS CAN ONLY BE PRESENT IN ONE ROW OF A CONNECTOR.

REVISED	EC NO: S2010-0566	DRAWN BY: DRWNSKANG	CHECKED BY: CHYDATSEE	APPROVED BY: APPRMLONG	DATE: 2010/01/05	DATE: 2010/02/03	DATE: 2010/02/19	DESCRIPTION	QUALITY SYMBOLS	GENERAL TOLERANCES (UNLESS SPECIFIED)		DIMENSION STYLE		SCALE	DESIGN UNITS		THIRD ANGLE PROJECTION			
												IN/MM		NTS	INCH					
										 =0	4 PLACES	± ---	± ---	AAB	DATE			1989/05/15	TITLE	
										 =0	3 PLACES	± ---	± .010		CHECKED BY			DATE	2MM DUAL ROW	
										 =0	2 PLACES	± 0.25	± .015	MJM	DATE			1989/05/15	VERTICAL RECEPTACLE, SMT	
										1 PLACE	± 0.38	± ---		APPROVED BY	DATE		MOLEX INCORPORATED			
										ANGULAR ± 3 °		MLONG	2010/02/18							
M6	REV									DRAFT WHERE APPLICABLE		MATERIAL NO.		DOCUMENT NO.		SHEET NO.				
										MUST REMAIN WITHIN DIMENSIONS		SEE TABLE		SDA-79109-****			3 OF 10			
										SIZE	THIS DRAWING CONTAINS INFORMATION THAT IS PROPRIETARY TO MOLEX INCORPORATED AND SHOULD NOT BE USED WITHOUT WRITTEN PERMISSION									



10 9 8 7 6 5 4 3 2 1

PEG OPTION

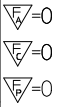
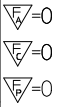
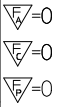
CKT. SIZE	DIM. "A"		DIM. "B"		DIM. "C"		DIM. "D"		PLATING OPTION 5		PLATING OPTION 4		PLATING OPTION 6	
	INCH	MM	INCH	MM	INCH	MM	INCH	MM	ITEM NO. TUBE PACKED (WITHOUT CAP)	ITEM NO. TAPE PACKED (WITH CAP A)	ITEM NO. TUBE PACKED (WITHOUT CAP)	ITEM NO. TAPE PACKED (WITH CAP A)	ITEM NO. TUBE PACKED (WITHOUT CAP)	ITEM NO. TAPE PACKED (WITH CAP A)
04	.079	(2.00)	.165	(4.19)	-	-	.183	(4.65)	79109-1201	79109-8601	79109-1251	79109-8651	X	79109-1301
06	.157	(4.00)	.244	(6.19)	.079	(2.00)	.183	(4.65)	79109-1202	79109-8602	79109-1252	79109-8652	X	79109-1302
08	.236	(6.00)	.322	(8.19)	.157	(4.00)	.183	(4.65)	79109-1203	79109-8603	79109-1253	79109-8653	X	79109-1303
10	.315	(8.00)	.401	(10.19)	.236	(6.00)	.183	(4.65)	79109-1204	79109-8604	79109-1254	79109-8654	X	79109-1304
12	.394	(10.00)	.480	(12.19)	.315	(8.00)	.183	(4.65)	79109-1205	79109-8605	79109-1255	79109-8655	X	79109-1305
14	.472	(12.00)	.559	(14.19)	.394	(10.00)	.183	(4.65)	79109-1206	79109-8606	79109-1256	79109-8656	X	79109-1306
16	.551	(14.00)	.637	(16.19)	.472	(12.00)	.183	(4.65)	79109-1207	79109-8607	79109-1257	79109-8657	X	79109-1307
18	.630	(16.00)	.716	(18.19)	.551	(14.00)	.183	(4.65)	79109-1208	79109-8608	79109-1258	79109-8658	X	79109-1308
20	.709	(18.00)	.795	(20.19)	.630	(16.00)	.183	(4.65)	79109-1209	79109-8609	79109-1259	79109-8659	X	79109-1309
22	.787	(20.00)	.874	(22.19)	.709	(18.00)	.183	(4.65)	79109-1210	79109-8610	79109-1260	79109-8660	X	79109-1310
24	.866	(22.00)	.952	(24.19)	.787	(20.00)	.183	(4.65)	79109-1211	79109-8611	79109-1261	79109-8661	X	79109-1311
26	.945	(24.00)	1.031	(26.19)	.866	(22.00)	.183	(4.65)	79109-1212	79109-8612	79109-1262	79109-8662	X	79109-1312
28	1.024	(26.00)	1.110	(28.19)	.945	(24.00)	.183	(4.65)	79109-1213	79109-8613	79109-1263	79109-8663	X	79109-1313
30	1.102	(28.00)	1.188	(30.19)	1.024	(26.00)	.183	(4.65)	79109-1214	79109-8614	79109-1264	79109-8664	X	79109-1314
32	1.181	(30.00)	1.267	(32.19)	1.102	(28.00)	.183	(4.65)	79109-1215	79109-8615	79109-1265	79109-8665	X	79109-1315
34	1.260	(32.00)	1.346	(34.19)	1.181	(30.00)	.183	(4.65)	79109-1216	79109-8616	79109-1266	79109-8666	X	79109-1316
36	1.338	(34.00)	1.425	(36.19)	1.260	(32.00)	.183	(4.65)	79109-1217	79109-8617	79109-1267	79109-8667	X	79109-1317
38	1.417	(36.00)	1.504	(38.19)	1.338	(34.00)	.183	(4.65)	79109-1218	79109-8618	79109-1268	79109-8668	X	79109-1318
40	1.496	(38.00)	1.582	(40.19)	1.417	(36.00)	.183	(4.65)	79109-1219	79109-8619	79109-1269	79109-8669	X	79109-1319
42	1.575	(40.00)	1.661	(42.19)	1.496	(38.00)	.183	(4.65)	79109-1220	79109-8620	79109-1270	79109-8670	X	79109-1320
44	1.654	(42.00)	1.740	(44.19)	1.575	(40.00)	.183	(4.65)	79109-1221	79109-8621	79109-1271	79109-8671	X	79109-1321
46	1.732	(44.00)	1.818	(46.19)	1.654	(42.00)	.183	(4.65)	79109-1222	79109-8622	79109-1272	79109-8672	X	79109-1322
48	1.811	(46.00)	1.897	(48.19)	1.732	(44.00)	.183	(4.65)	79109-1223	79109-8623	79109-1273	79109-8673	X	79109-1323
50	1.890	(48.00)	1.976	(50.19)	1.811	(46.00)	.183	(4.65)	79109-1224	79109-8624	79109-1274	79109-8674	X	79109-1324

X INDICATES TOOLING NOT AVAILABLE

REVISED EC NO: S2010-0566 DRAWN BY: DRWNSXKANG CHKD BY: CHYKATSEE APPR: MLONG M6	DESCRIPTION 2010/01/05 2010/02/03 2010/02/19	QUALITY SYMBOLS	GENERAL TOLERANCES (UNLESS SPECIFIED)		DIMENSION STYLE IN/MM		SCALE NTS	DESIGN UNITS INCH	THIRD ANGLE PROJECTION
				mm	INCH	DRAWN BY AAB	DATE 1989/05/15	TITLE 2MM DUAL ROW VERTICAL RECEPTACLE, SMT	
			4 PLACES ± --- ± ---		CHECKED BY MJM	DATE 1989/05/15			
			3 PLACES ± --- ± .010		APPROVED BY MLONG	DATE 2010/02/18			
			2 PLACES ± 0.25 ± .015		MOLEX INCORPORATED				
			1 PLACE ± 0.38 ± ---						
			ANGULAR ± 3 °		MATERIAL NO. SEE TABLE	DOCUMENT NO. SDA-79109-****	SHEET NO. 5 OF 10		
			DRAFT WHERE APPLICABLE MUST REMAIN WITHIN DIMENSIONS		SIZE A3 THIS DRAWING CONTAINS INFORMATION THAT IS PROPRIETARY TO MOLEX INCORPORATED AND SHOULD NOT BE USED WITHOUT WRITTEN PERMISSION				

tb_frame_A3_P_AM.T
Rev. F 2009/06/18

9 8 7 6 5 4 3 2 1

	10	9	8	7	6	5	4	3	2	1																																																															
F											F																																																														
E											E																																																														
D											D																																																														
C											C																																																														
B											B																																																														
A											A																																																														
PEG OPTION																																																																									
SPECIAL PACKAGING (TAPE PACKED WITHOUT CAP)																																																																									
<table><tr><td></td><td colspan="2">DIM. "A"</td><td colspan="2">DIM. "B"</td><td colspan="2">DIM. "C"</td><td colspan="2">DIM. "D"</td><td rowspan="2">ITEM NO.</td><td rowspan="2">PLATING OPTION SEE SHEET 1</td></tr><tr><td>CKT. SIZE</td><td>INCH</td><td>MM</td><td>INCH</td><td>MM</td><td>INCH</td><td>MM</td><td>INCH</td><td>MM</td></tr><tr><td>50</td><td>.1890</td><td>(48.00)</td><td>.1976</td><td>(50.19)</td><td>.1811</td><td>(46.00)</td><td>.183</td><td>(4.65)</td><td>79109-9103</td><td>5</td></tr></table>													DIM. "A"		DIM. "B"		DIM. "C"		DIM. "D"		ITEM NO.	PLATING OPTION SEE SHEET 1	CKT. SIZE	INCH	MM	INCH	MM	INCH	MM	INCH	MM	50	.1890	(48.00)	.1976	(50.19)	.1811	(46.00)	.183	(4.65)	79109-9103	5																															
	DIM. "A"		DIM. "B"		DIM. "C"		DIM. "D"		ITEM NO.	PLATING OPTION SEE SHEET 1																																																															
CKT. SIZE	INCH	MM	INCH	MM	INCH	MM	INCH	MM																																																																	
50	.1890	(48.00)	.1976	(50.19)	.1811	(46.00)	.183	(4.65)	79109-9103	5																																																															
<table><tr><td rowspan="5">REVISED EC NO: S2010-0566 DRAWN: KANG CHKD: ATSEE APPR: MLONG M6</td><td rowspan="5">DESCRIPTION REV</td><td>QUALITY SYMBOLS</td><td colspan="2">GENERAL TOLERANCES (UNLESS SPECIFIED)</td><td colspan="2">DIMENSION STYLE IN/MM</td><td>SCALE NTS</td><td>DESIGN UNITS INCH</td><td colspan="2">THIRD ANGLE PROJECTION</td></tr><tr><td rowspan="4"></td><td></td><td>mm</td><td>INCH</td><td>DRAWN BY</td><td>DATE</td><td rowspan="4">TITLE 2MM DUAL ROW VERTICAL RECEPTACLE, SMT</td></tr><tr><td>4 PLACES</td><td>± .005</td><td>± .005</td><td>AAB</td><td>1989/05/15</td></tr><tr><td>3 PLACES</td><td>± .010</td><td>± .010</td><td>CHECKED BY</td><td>DATE</td></tr><tr><td>2 PLACES</td><td>± 0.25</td><td>± .015</td><td>MJM</td><td>1989/05/15</td></tr><tr><td>1 PLACE</td><td>± 0.38</td><td>± .015</td><td>APPROVED BY</td><td>DATE</td><td rowspan="2">MOLEX INCORPORATED</td></tr><tr><td colspan="2">ANGULAR ± 3 °</td><td>MLONG</td><td>2010/02/18</td><td rowspan="2">DOCUMENT NO. SDA-79109-****</td></tr><tr><td colspan="2">DRAFT WHERE APPLICABLE MUST REMAIN WITHIN DIMENSIONS</td><td colspan="2">MATERIAL NO. SEE TABLE</td><td colspan="2">SHEET NO. 6 OF 10</td></tr><tr><td colspan="2">SIZE A3</td><td colspan="10">THIS DRAWING CONTAINS INFORMATION THAT IS PROPRIETARY TO MOLEX INCORPORATED AND SHOULD NOT BE USED WITHOUT WRITTEN PERMISSION</td></tr></table>												REVISED EC NO: S2010-0566 DRAWN: KANG CHKD: ATSEE APPR: MLONG M6	DESCRIPTION REV	QUALITY SYMBOLS	GENERAL TOLERANCES (UNLESS SPECIFIED)		DIMENSION STYLE IN/MM		SCALE NTS	DESIGN UNITS INCH	THIRD ANGLE PROJECTION				mm	INCH	DRAWN BY	DATE	TITLE 2MM DUAL ROW VERTICAL RECEPTACLE, SMT	4 PLACES	± .005	± .005	AAB	1989/05/15	3 PLACES	± .010	± .010	CHECKED BY	DATE	2 PLACES	± 0.25	± .015	MJM	1989/05/15	1 PLACE	± 0.38	± .015	APPROVED BY	DATE	MOLEX INCORPORATED	ANGULAR ± 3 °		MLONG	2010/02/18	DOCUMENT NO. SDA-79109-****	DRAFT WHERE APPLICABLE MUST REMAIN WITHIN DIMENSIONS		MATERIAL NO. SEE TABLE		SHEET NO. 6 OF 10		SIZE A3		THIS DRAWING CONTAINS INFORMATION THAT IS PROPRIETARY TO MOLEX INCORPORATED AND SHOULD NOT BE USED WITHOUT WRITTEN PERMISSION									
REVISED EC NO: S2010-0566 DRAWN: KANG CHKD: ATSEE APPR: MLONG M6	DESCRIPTION REV	QUALITY SYMBOLS	GENERAL TOLERANCES (UNLESS SPECIFIED)		DIMENSION STYLE IN/MM		SCALE NTS	DESIGN UNITS INCH	THIRD ANGLE PROJECTION																																																																
				mm	INCH	DRAWN BY	DATE	TITLE 2MM DUAL ROW VERTICAL RECEPTACLE, SMT																																																																	
			4 PLACES	± .005	± .005	AAB	1989/05/15																																																																		
			3 PLACES	± .010	± .010	CHECKED BY	DATE																																																																		
			2 PLACES	± 0.25	± .015	MJM	1989/05/15																																																																		
1 PLACE	± 0.38	± .015	APPROVED BY	DATE	MOLEX INCORPORATED																																																																				
ANGULAR ± 3 °		MLONG	2010/02/18	DOCUMENT NO. SDA-79109-****																																																																					
DRAFT WHERE APPLICABLE MUST REMAIN WITHIN DIMENSIONS		MATERIAL NO. SEE TABLE			SHEET NO. 6 OF 10																																																																				
SIZE A3		THIS DRAWING CONTAINS INFORMATION THAT IS PROPRIETARY TO MOLEX INCORPORATED AND SHOULD NOT BE USED WITHOUT WRITTEN PERMISSION																																																																							
tb_frame_A3_P_AM_T Rev. F 2009/06/18	9	8	7	6	5	4	3	2	1																																																																

	ASSEMBLY (WITHOUT CAP IN TUBE)	VOID LOCATION(S) SEE SHEET 1 FOR CONVENTION		PLATING OPTION	DIM. "A"		DIM. "B"		DIM. "C"		DIM. "D"	
CKT. SIZE	ITEM NO.	ROW	CKT. NO.(S)		INCH	MM	INCH	MM	INCH	MM	INCH	MM
48	79109-6011	ROW A	1, 24	5	1.811	(46.00)	1.897	(48.19)	1.732	(44.00)	.183	(4.65)
44	79109-6012	ROW B	10	5	1.654	(42.00)	1.740	(44.19)	1.575	(40.00)	.183	(4.65)

1. TERMINALS WILL BE PRESENT IN VOIDED LOCATIONS. HOWEVER, PIN WINDOWS WILL BE CLOSED.
2. VOIDS CAN ONLY BE PRESENT IN ONE ROW OF A CONNECTOR.

tb_frame_A3_P_AM_T
Rev. F 2009/06/18

10 9 8 7 6 5 4 3 2 1

SPECIAL - CUSTOM TERMINAL FEET
PEG OPTION

CKT. SIZE	DIM. "A"		DIM. "B"		DIM. "C"		DIM. "D"		PLATING OPTION 5		
	INCH	MM	INCH	MM	INCH	MM	INCH	MM	ITEM NO. TUBE PACKED (WITHOUT CAP)	ITEM NO. TAPE PACKED (WITH CAP A)	ITEM NO. TUBE PACKED (WITH CAP A)
04	.079	(2.00)	.165	(4.19)	-	-	.185	(4.70)	X	-	X 79109-8751
06	.157	(4.00)	.244	(6.19)	.079	(2.00)	.185	(4.70)	X	-	X 79109-8752
08	.236	(6.00)	.322	(8.19)	.157	(4.00)	.185	(4.70)	X	-	X 79109-8753
10	.315	(8.00)	.401	(10.19)	.236	(6.00)	.185	(4.70)	X	-	X 79109-8754
12	.394	(10.00)	.480	(12.19)	.315	(8.00)	.185	(4.70)	X	-	X 79109-8755
14	.472	(12.00)	.559	(14.19)	.394	(10.00)	.185	(4.70)	X	-	X 79109-8756
16	.551	(14.00)	.637	(16.19)	.472	(12.00)	.185	(4.70)	X	-	X 79109-8757
18	.630	(16.00)	.716	(18.19)	.551	(14.00)	.185	(4.70)	X	-	X 79109-8758
20	.709	(18.00)	.795	(20.19)	.630	(16.00)	.185	(4.70)	X	-	X 79109-8759
22	.787	(20.00)	.874	(22.19)	.709	(18.00)	.185	(4.70)	X	-	X 79109-8760
24	.866	(22.00)	.952	(24.19)	.787	(20.00)	.185	(4.70)	X	-	X 79109-8761
26	.945	(24.00)	1.031	(26.19)	.866	(22.00)	.185	(4.70)	X	-	X 79109-8762
28	1.024	(26.00)	1.110	(28.19)	.945	(24.00)	.185	(4.70)	X	-	X 79109-8763
30	1.102	(28.00)	1.188	(30.19)	1.024	(26.00)	.185	(4.70)	X 79109-7010	X 79109-8764	X 79109-7065
32	1.181	(30.00)	1.267	(32.19)	1.102	(28.00)	.185	(4.70)	X	-	X 79109-8765
34	1.260	(32.00)	1.346	(34.19)	1.181	(30.00)	.185	(4.70)	X	-	X 79109-8766
36	1.338	(34.00)	1.425	(36.19)	1.260	(32.00)	.185	(4.70)	X	-	X 79109-8767
38	1.417	(36.00)	1.504	(38.19)	1.338	(34.00)	.185	(4.70)	X	-	X 79109-8768
40	1.496	(38.00)	1.582	(40.19)	1.417	(36.00)	.185	(4.70)	X	-	X 79109-8769
42	1.575	(40.00)	1.661	(42.19)	1.496	(38.00)	.185	(4.70)	X	-	X N.A.
44	1.654	(42.00)	1.740	(44.19)	1.575	(40.00)	.185	(4.70)	X 79109-7016	X N.A.	X
46	1.732	(44.00)	1.818	(46.19)	1.654	(42.00)	.185	(4.70)	X	-	X N.A.
48	1.811	(46.00)	1.897	(48.19)	1.732	(44.00)	.185	(4.70)	X	-	X N.A.
50	1.890	(48.00)	1.976	(50.19)	1.811	(46.00)	.185	(4.70)	X 79109-7015	X N.A.	X

*X INDICATES TOOLING NOT AVAILABLE

REVISED EC NO: S2010-0566 DRAWN BY: DRWNSKANG CHKD BY: CHKDATSEE APPROVAL: MLONG M6	DESCRIPTION REV	QUALITY SYMBOLS <div>▽=0</div> <div>▽=0</div> <div>▽=0</div>	GENERAL TOLERANCES (UNLESS SPECIFIED)		DIMENSION STYLE IN/MM		SCALE NTS	DESIGN UNITS INCH	THIRD ANGLE PROJECTION	
			mm	INCH	DRAWN BY AAB	DATE 1989/05/15	TITLE 2MM DUAL ROW VERTICAL RECEPTACLE, SMT			
			4 PLACES ± ---	± ---	CHECKED BY MJM	DATE 1989/05/15				
			3 PLACES ± ---	± .010	APPROVED BY MLONG	DATE 2010/02/18	MOLEX INCORPORATED			
			2 PLACES ± 0.25	± .015						
			1 PLACE ± 0.38	± ---						
			ANGULAR ± 3 °							
			DRAFT WHERE APPLICABLE MUST REMAIN WITHIN DIMENSIONS		MATERIAL NO. SEE TABLE		DOCUMENT NO. SDA-79109-****		SHEET NO. 8 OF 10	
					SIZE A3	THIS DRAWING CONTAINS INFORMATION THAT IS PROPRIETARY TO MOLEX INCORPORATED AND SHOULD NOT BE USED WITHOUT WRITTEN PERMISSION				

tb_frame_A3_P_AM.T
Rev. F 2009/06/18

9 8 7 6 5 4 3 2 1

10 9 8 7 6 5 4 3 2 1

F

SPECIAL - CUSTOM TERMINAL FEET
VOIDED CIRCUIT OPTION

E

CKT. SIZE	ASSEMBLY		VOID LOCATION(S) SEE SHEET 1 FOR CONVENTION		PLATING OPTION	DIM. "A"		DIM. "B"		DIM. "C"		DIM. "D"		PEG OPTION	
	ITEM NO. TUBE PACKED (WITHOUT CAP)	ITEM NO. TAPE PACKED (WITH CAP A)	ROW	CKT. NO.(s)		INCH	MM	INCH	MM	INCH	MM	INCH	MM		
48	79109-7011	X	79109-8385	ROW A	1, 24	5	1.811	(46.00)	1.897	(48.19)	1.732	(44.00)	.185	(4.70)	YES
42	79109-7012	X	79109-8386	ROW A	1, 21	5	1.575	(40.00)	1.661	(42.19)	1.496	(38.00)	.185	(4.70)	YES
20	79109-7013		79109-8387	ROW A	1, 10	5	.709	(18.00)	.795	(20.19)	.630	(16.00)	.185	(4.70)	YES
50	79109-7014	X	79109-8388	ROW B	13	5	1.890	(48.00)	1.976	(50.19)	1.811	(46.00)	.185	(4.70)	YES
50	79109-7017		79109-8988	ROW B	13	5	1.890	(48.00)	1.976	(50.19)	1.811	(46.00)	.185	(4.70)	NO

X INDICATES TOOLING IS NOT AVAILABLE

C

- NOTES:
1. TERMINALS WILL BE PRESENT IN VOIDED LOCATIONS. HOWEVER, PIN WINDOWS WILL BE CLOSED.
2. VOIDS CAN ONLY BE PRESENT IN ONE ROW OF A CONNECTOR.

B

A

REVISED EC NO: S2010-0566 2010/01/05 DRW:SKANG CHK:DATSEE 2010/02/03 APPR:MLONG 2010/02/19 REV	DESCRIPTION	QUALITY SYMBOLS	GENERAL TOLERANCES (UNLESS SPECIFIED)		DIMENSION STYLE IN/MM		SCALE NTS	DESIGN UNITS INCH	THIRD ANGLE PROJECTION			
				mm	INCH	DRAWN BY AAB	DATE 1989/05/15	TITLE 2MM DUAL ROW VERTICAL RECEPTACLE, SMT				
			4 PLACES ± --- ± ---			CHECKED BY MJM	DATE 1989/05/15	MOLEX INCORPORATED				
			3 PLACES ± --- ± .010			APPROVED BY MLONG	DATE 2010/02/18					
			2 PLACES ± 0.25 ± .015			MATERIAL NO. SEE TABLE		DOCUMENT NO. SDA-79109-****		SHEET NO. 9 OF 10		
			1 PLACE ± 0.38 ± ---			THIS DRAWING CONTAINS INFORMATION THAT IS PROPRIETARY TO MOLEX INCORPORATED AND SHOULD NOT BE USED WITHOUT WRITTEN PERMISSION						
			ANGULAR ± 3 °									
			DRAFT WHERE APPLICABLE MUST REMAIN WITHIN DIMENSIONS									

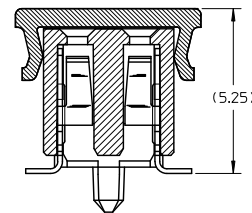
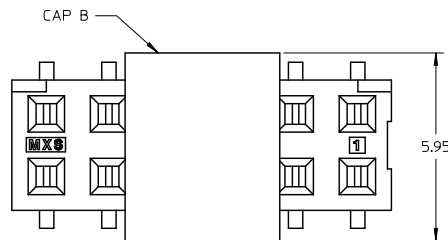
tb_frame_A3_P_AM_T
Rev. F 2009/06/18

9 8 7 6 5 4 3 2 1

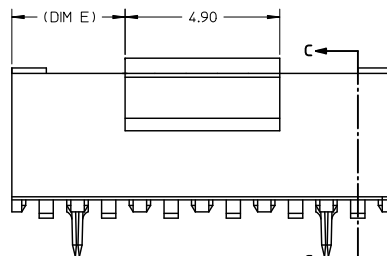
SPECIAL - ASSEMBLIES WITH CAP B (TAPE PACKED WITH CAP)

PEG OPTION

CKT. SIZE	DIM. "A"		DIM. "B"		DIM. "C"		DIM. "D"		DIM. "E"		ITEM NO.	PLATING OPTION SEE SHEET 1
	INCH	MM	INCH	MM	INCH	MM	INCH	MM	INCH	MM		
8	.236	(6.00)	.322	(8.19)	.157	(4.00)	.183	(4.65)	.065	(1.65)	79109-9108	4
18	.630	(16.00)	.716	(18.19)	.551	(14.00)	.183	(4.65)	.262	(6.65)	79109-9118	4



SECTION C-C



REVISED	EC NO: S2010-0566	DRWNSKANG	2000/01/05	CHYKATSEE	2000/02/03	APPR:MLONG	2000/02/19	DESCRIPTION	QUALITY SYMBOLS	GENERAL TOLERANCES (UNLESS SPECIFIED)		DIMENSION STYLE		SCALE	DESIGN UNITS	THIRD ANGLE	
												IN/MM		NTS	INCH	PROJECTION	
												DRAWN BY		DATE		TITLE	
												CHECKED BY		DATE		2MM DUAL ROW	
												M/JM		1989/05/15		VERTICAL RECEPTACLE, SMT	
												APPROVED BY		DATE		MOLEX MOLEX INCORPORATED	
												MLONG		2010/02/18			
REV	M6			MATERIAL NO.		DOCUMENT NO.		SHEET NO.									
				SEE TABLE		SDA-79109-****		10 OF 10									
				SIZE A3		THIS DRAWING CONTAINS INFORMATION THAT IS PROPRIETARY TO MOLEX INCORPORATED AND SHOULD NOT BE USED WITHOUT WRITTEN PERMISSION											