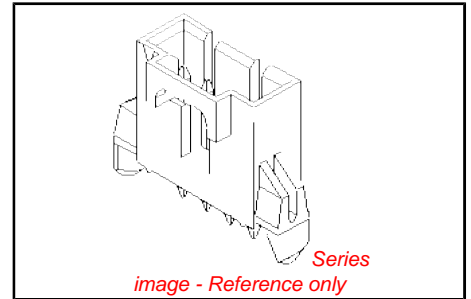


PLEASE CHECK WWW.MOLEX.COM FOR LATEST PART INFORMATION

Part Number: [0705450001](#)
Status: **Active**
Overview: [cgrid_sl_products](#)
Description: 2.54mm (.100") Pitch SL™ Header, Single Row .120" Pocket Vertical, Shrouded, with Press-fir Plastic Peg, 2 Circuits, Tin (Sn) Plating

Documents:

| | |
|---|--|
| 3D Model | Product Specification PS-70400 (PDF) |
| Packaging Specification (PDF) | Product Specification PS-70541 (PDF) |
| Drawing (PDF) | RoHS Certificate of Compliance (PDF) |



Agency Certification

| | |
|-----|---------|
| CSA | LR19980 |
| UL | E29179 |

General

| | |
|----------------|-----------------------------------|
| Product Family | PCB Headers |
| Series | 70545 |
| Application | Wire-to-Board |
| Overview | cgrid_sl_products |
| Product Name | SL™ |

Physical

| | |
|--------------------------------|--------------------------------|
| Breakaway | No |
| Circuits (Loaded) | 2 |
| Circuits (maximum) | 2 |
| Color - Resin | Black |
| Durability (mating cycles max) | 25 |
| Flammability | 94V-0 |
| Glow-Wire Compliant | No |
| Lock to Mating Part | Yes |
| Material - Metal | Brass, Phosphor Bronze |
| Material - Plating Mating | Tin |
| Material - Plating Termination | Tin |
| Material - Resin | High Temperature Thermoplastic |
| Number of Rows | 1 |
| Orientation | Vertical |
| PC Tail Length (in) | 0.130 In |
| PC Tail Length (mm) | 3.30 mm |
| PCB Locator | Yes |
| PCB Retention | Yes |
| PCB Thickness Recommended (in) | 0.062 In |
| PCB Thickness Recommended (mm) | 1.60 mm |
| Packaging Type | Tube |
| Pitch - Mating Interface (in) | 0.100 In |
| Pitch - Mating Interface (mm) | 2.54 mm |
| Plating min: Mating (µin) | 150 |
| Plating min: Mating (µm) | 3.75 |
| Plating min: Termination (µin) | 150 |
| Plating min: Termination (µm) | 3.75 |
| Polarized to Mating Part | Yes |
| Shrouded | Fully |
| Stackable | No |
| Surface Mount Compatible (SMC) | Yes |
| Temperature Range - Operating | -40°C to +105°C |
| Termination Interface: Style | Through Hole |

EU RoHS

ELV and RoHS Compliant

REACH SVHC

Not Reviewed

Halogen-Free

Status

Not Halogen-Free

Need more information on product environmental compliance?

Email productcompliance@molex.com
 For a multiple part number RoHS Certificate of Compliance, [click here](#)

Please visit the [Contact Us](#) section for any non-product compliance questions.

China RoHS



Search Parts in this Series

[70545Series](#)

Mates With

[70066n](#) , [70066g](#) , [70430g](#) , [70400g Housing](#)

Electrical

Current - Maximum per Contact 3A
Voltage - Maximum 250V

Solder Process Data

Duration at Max. Process Temperature (seconds) 3
Lead-free Process Capability Wave Capable (TH only)
Max. Cycles at Max. Process Temperature 1
Process Temperature max. C 245

Material Info

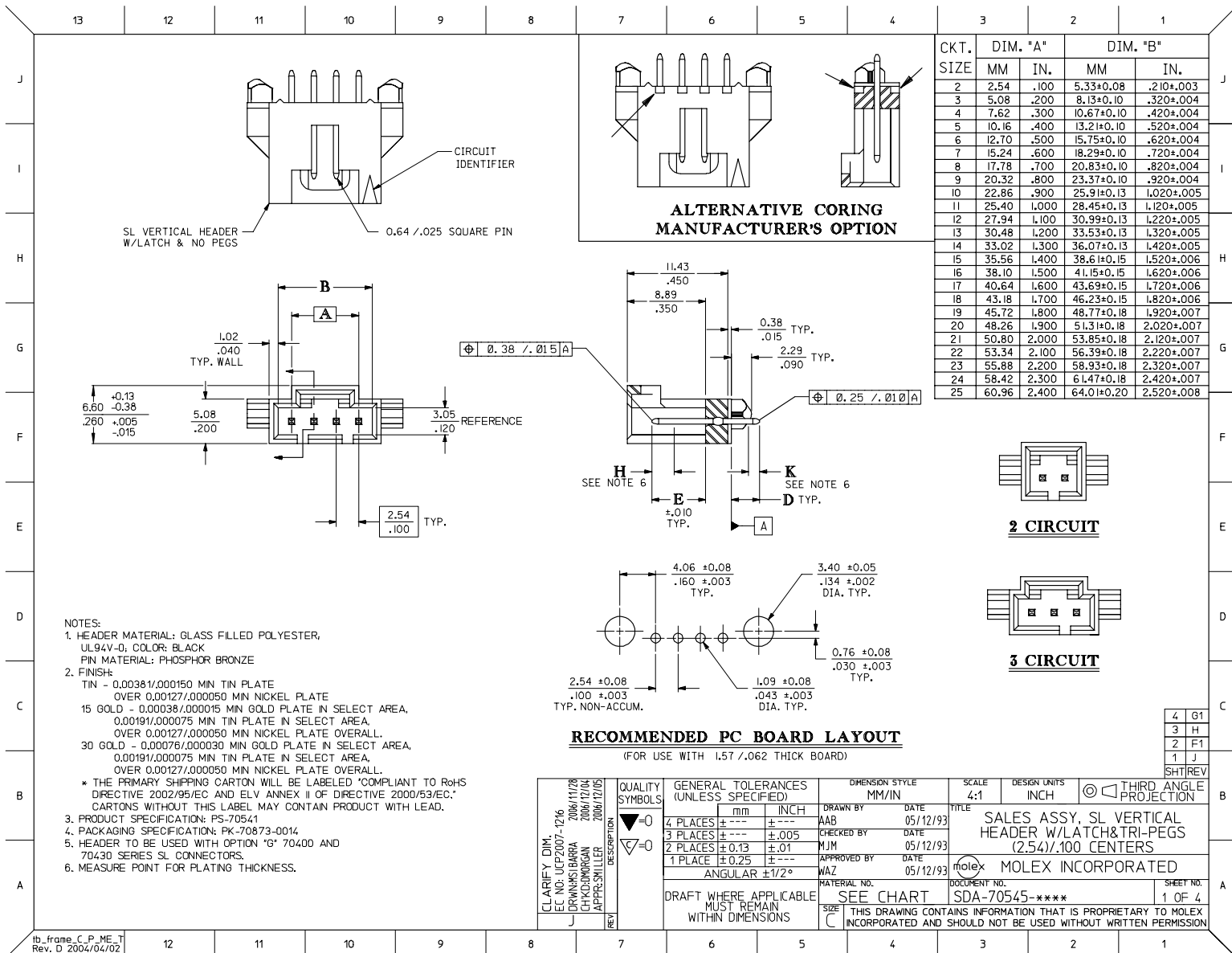
Old Part Number A-70545-0001

Reference - Drawing Numbers

Packaging Specification PK-70873-0014
Product Specification PS-70400, PS-70541
Sales Drawing SDA-70545-****

This document was generated on 05/24/2010

PLEASE CHECK WWW.MOLEX.COM FOR LATEST PART INFORMATION



- NOTES:
- HEADER MATERIAL: GLASS FILLED POLYESTER, UL94V-0; COLOR: BLACK
PIN MATERIAL: PHOSPHOR BRONZE
 - FINISH:
TIN - 0.00381/0.00150 MIN TIN PLATE
OVER 0.00127/0.00050 MIN NICKEL PLATE
15 GOLD - 0.00038/0.00015 MIN GOLD PLATE IN SELECT AREA,
0.00191/0.00075 MIN TIN PLATE IN SELECT AREA,
OVER 0.00127/0.00050 MIN NICKEL PLATE OVERALL.
30 GOLD - 0.00076/0.00030 MIN GOLD PLATE IN SELECT AREA,
0.00191/0.00075 MIN TIN PLATE IN SELECT AREA,
OVER 0.00127/0.00050 MIN NICKEL PLATE OVERALL.
* THE PRIMARY SHIPPING CARTON WILL BE LABELED "COMPLIANT TO RoHS
DIRECTIVE 2002/95/EC AND ELV ANNEX II OF DIRECTIVE 2000/53/EC,"
CARTONS WITHOUT THIS LABEL MAY CONTAIN PRODUCT WITH LEAD.
 - PRODUCT SPECIFICATION: PS-70541
 - PACKAGING SPECIFICATION: PK-70873-0014
 - HEADER TO BE USED WITH OPTION "G" 70400 AND
70430 SERIES SL CONNECTORS.
 - MEASURE POINT FOR PLATING THICKNESS.

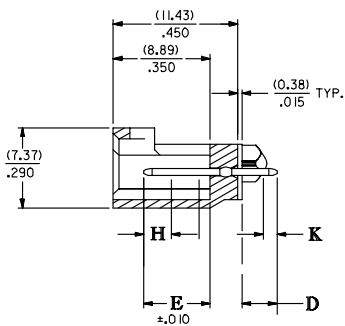
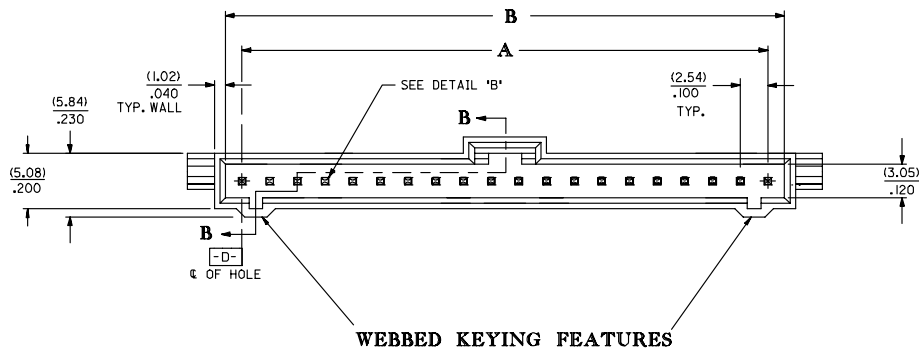
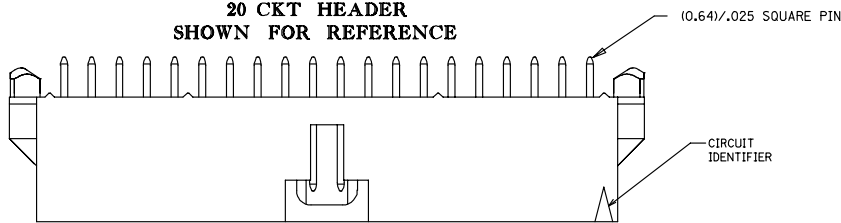
RECOMMENDED PC BOARD LAYOUT
(FOR USE WITH 1.57 / .062 THICK BOARD)

| | | | | | | | | |
|--|-------------------------------|---------------------------------------|----------------------|---------------------------------|---------------------|--|--|--|
| CLARIFY DIM. EC NO. UCP2007-1216 DRAWN BY: DRWNSI BARRA CHKD BY: CHKCDKORGAN APPR: SHILLER 2006/11/28 2006/12/04 2006/12/05 | QUALITY SYMBOLS ▽=0 ▽=0 | GENERAL TOLERANCES (UNLESS SPECIFIED) | | DIMENSION STYLE MM/IN | | SCALE 4:1 | DESIGN UNITS INCH | THIRD ANGLE PROJECTION |
| | | 4 PLACES ±.005 ±.005 | 3 PLACES ±.013 ±.005 | 2 PLACES ±.025 ±.013 | 1 PLACE ±.050 ±.025 | DRAWN BY: AAB CHECKED BY: MJM APPROVED BY: WAZ | DATE: 05/12/93 DATE: 05/12/93 DATE: 05/12/93 | TITLE SALES ASSY, SL VERTICAL HEADER W/LATCH&TRI-PEGS (2.54)/.100 CENTERS |
| DRAFT WHERE APPLICABLE MUST REMAIN WITHIN DIMENSIONS | | MATERIAL NO. SEE CHART | | DOCUMENT NO. SDA-70545-***** | | MOLEX INCORPORATED | | SHEET NO. 1 OF 4 |

OPTIONAL HOUSING

WEBBED KEYING FEATURES

20 CKT HEADER
SHOWN FOR REFERENCE



SECTION B-B

| | | | | | | |
|--|---------------------------|--|--------------------------------|--|----------------------|------------------------|
| UPDATE TITLE BLOCK DEC NO. UCP 2006-0202 DRAWN: LOME 2005/08/05 CHECKED: R 2005/08/05 APPROVED: SMITH 2005/08/05 | QUALITY SYMBOLS | GENERAL TOLERANCES (UNLESS SPECIFIED) mm INCH 4 PLACES ± --- ± --- 3 PLACES ± --- ± .005 2 PLACES ± 0.13 ± .01 1 PLACE ± 0.25 ± --- ANGULAR ± 1/2° | DIMENSION STYLE MM/IN | SCALE --- | DESIGN UNITS INCH | THIRD ANGLE PROJECTION |
| | DRAWN BY WGM | | DATE 07/10/96 | TITLE SALES ASSY, SL VERTICAL HEADER W/LATCH&TRI-PEGS (2.54)/.100 CENTERS | | |
| | CHECKED BY WGM | | DATE 07/10/96 | APPROVED BY MAZ | DATE 07/10/96 | |
| | MATERIAL NO. SEE CHART | | DOCUMENT NO. SDA-70545-**** | SHEET NO. 2 OF 4 | | |
| DRAFT WHERE APPLICABLE MUST REMAIN WITHIN DIMENSIONS | | THIS DRAWING CONTAINS INFORMATION THAT IS PROPRIETARY TO MOLEX INCORPORATED AND SHOULD NOT BE USED WITHOUT WRITTEN PERMISSION | | | | |

| CIRCUIT SIZE | ASSEMBLY ITEM NUMBER 70545 | MANUFACTURE RELEASE STATUS | | | | | D (± 0.38) ± .015 | E (± 0.25) ± .010 | CONNECTOR END PLATING | | | P.C. BOARD END PLATING | | |
|--------------|-------------------------------|----------------------------|--|--|--|--|-------------------------|-------------------------|-----------------------|------------|------|------------------------|------------|------|
| | | | | | | | | | TYPE | H MEAS. | | TYPE | K MEAS. | |
| 2-10 | -0001-0009 | R.F.M. | | | | | (3.30) | (6.10) | TIN | (2.54) | .100 | TIN | (1.27) | .050 |
| 11-25 | -0010-0024 | R.F.M. | | | | | .130 | .240 | | | | | | |
| 2-10 | -0036-0044 | R.F.M. | | | | | (3.30) | (6.10) | 15 GOLD | (2.54) | .100 | TIN | (1.27) | .050 |
| 11-25 | -0045-0059 | R.F.M. | | | | | .130 | .240 | | | | | | |
| 2-10 | -0071-0079 | R.F.M. | | | | | (3.30) | (6.10) | 30 GOLD | (2.54) | .100 | TIN | (1.27) | .050 |
| 11-25 | -0080-0094 | R.F.M. | | | | | .130 | .240 | | | | | | |
| 2-10 | -0141-0149 | R.F.M. | | | | | (5.21) | (6.10) | 15 GOLD | (2.54) | .100 | TIN | (1.27) | .050 |
| 11-25 | -0150-0164 | NOT TOOLED | | | | | .205 | .240 | | | | | | |
| 2-10 | -0176-0184 | R.F.M. | | | | | (5.21) | (6.10) | 30 GOLD | (2.54) | .100 | TIN | (1.27) | .050 |
| 11-25 | -0185-0199 | NOT TOOLED | | | | | .205 | .240 | | | | | | |

| CIRCUIT SIZE | ASSEMBLY ITEM NUMBER | ASSEMBLY ITEM NUMBER | ASSEMBLY ITEM NUMBER | ASSEMBLY ITEM NUMBER | ASSEMBLY ITEM NUMBER |
|--------------|----------------------|----------------------|----------------------|----------------------|----------------------|
| 2 | 70545-0001 | 70545-0036 | 70545-0071 | 70545-0141 | 70545-0176 |
| 3 | 70545-0002 | 70545-0037 | 70545-0072 | 70545-0142 | 70545-0177 |
| 4 | 70545-0003 | 70545-0038 | 70545-0073 | 70545-0143 | 70545-0178 |
| 5 | 70545-0004 | 70545-0039 | 70545-0074 | 70545-0144 | 70545-0179 |
| 6 | 70545-0005 | 70545-0040 | 70545-0075 | 70545-0145 | 70545-0180 |
| 7 | 70545-0006 | 70545-0041 | 70545-0076 | 70545-0146 | 70545-0181 |
| 8 | 70545-0007 | 70545-0042 | 70545-0077 | 70545-0147 | 70545-0182 |
| 9 | 70545-0008 | 70545-0043 | 70545-0078 | 70545-0148 | 70545-0183 |
| 10 | 70545-0009 | 70545-0044 | 70545-0079 | 70545-0149 | 70545-0184 |
| 11 | 70545-0010 | 70545-0045 | 70545-0080 | | |
| 12 | 70545-0011 | 70545-0046 | 70545-0081 | | |
| 13 | 70545-0012 | 70545-0047 | 70545-0082 | | |
| 14 | 70545-0013 | 70545-0048 | 70545-0083 | | |
| 15 | 70545-0014 | 70545-0049 | 70545-0084 | | |
| 16 | 70545-0015 | 70545-0050 | 70545-0085 | | |
| 17 | 70545-0016 | 70545-0051 | 70545-0086 | | |
| 18 | 70545-0017 | 70545-0052 | 70545-0087 | | |
| 19 | 70545-0018 | 70545-0053 | 70545-0088 | | |
| 20 | 70545-0019 | 70545-0054 | 70545-0089 | | |
| 21 | 70545-0020 | 70545-0055 | 70545-0090 | | |
| 22 | 70545-0021 | 70545-0056 | 70545-0091 | | |
| 23 | 70545-0022 | 70545-0057 | 70545-0092 | | |
| 24 | 70545-0023 | 70545-0058 | 70545-0093 | | |
| 25 | 70545-0024 | 70545-0059 | 70545-0094 | | |

| | | | | | | |
|---|-----------------------|--|-----------------|-------|--|---|
| CHG DIM -0141-0199 EC NO. UCP2007-0420 H DRWNSORGAN 2006/09/15 CH KCHSI BARRA 2006/09/15 APPR: SILLER 2006/09/15 REV DESCRIPTION | QUALITY SYMBOLS | GENERAL TOLERANCES (UNLESS SPECIFIED) | DIMENSION STYLE | SCALE | DESIGN UNITS | THIRD ANGLE PROJECTION |
| | ▽=0 | mm INCH | MM/IN | --- | INCH | |
| | ▽=0 | 4 PLACES ± --- ± --- | DRAWN BY DATE | | | TITLE |
| | | 3 PLACES ± --- ± .005 | WGM 07/12/96 | | | SALES ASSY, SL VERTICAL HEADER W/LATCH&TRI-PEGS (2.54)/.100 CENTERS |
| | 2 PLACES ± 0.13 ± .01 | CHECKED BY DATE | | | | |
| | 1 PLACE ± 0.25 ± --- | WGM 07/12/96 | | | | |
| | ANGULAR ±1/2° | APPROVED BY DATE | | | | |
| | | DJB 07/12/96 | | | | |
| | | MATERIAL NO. | | | DOCUMENT NO. | SHEET NO. |
| | | SEE CHART | | | SDA-70545-**** | 3 OF 4 |
| | | DRAFT WHERE APPLICABLE MUST REMAIN WITHIN DIMENSIONS | | | THIS DRAWING CONTAINS INFORMATION THAT IS PROPRIETARY TO MOLEX INCORPORATED AND SHOULD NOT BE USED WITHOUT WRITTEN PERMISSION | |

tb_frame_C_P_ME_T
Rev. D 2004/04/02