

**PLEASE CHECK WWW.MOLEX.COM FOR LATEST PART INFORMATION**

**Part Number:** **0701070003**  
**Status:** **Active**  
**Overview:** [cgrid\\_sl\\_products](#)  
**Description:** 2.54mm (.100") Pitch SL™ Wire-to-Wire Crimp Housing, Single Row, Version A, without Mounting Ears, 4 Circuits

**Documents:**

[3D Model](#) [Product Specification PS-70400 \(PDF\)](#)  
[Drawing \(PDF\)](#) [RoHS Certificate of Compliance \(PDF\)](#)

**Agency Certification**

CSA LR19980  
TUV R72081037  
UL E29179

**General**

Product Family Crimp Housings  
Series [70107](#)  
Comments Version A  
Overview [cgrid\\_sl\\_products](#)  
Product Name SL™

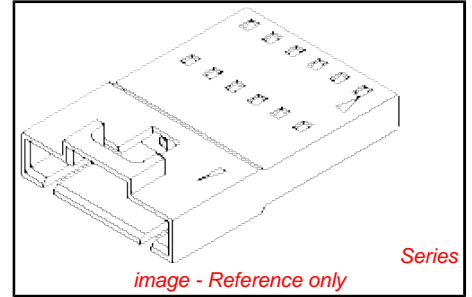
**Physical**

Circuits (maximum) 4  
Color - Resin Black  
Flammability 94V-0  
Gender Female  
Glow-Wire Compliant No  
Material - Resin Polyester  
Number of Rows 1  
Packaging Type Bag  
Panel Mount No  
Pitch - Mating Interface (in) 0.100 In  
Pitch - Mating Interface (mm) 2.54 mm  
Stackable No  
Temperature Range - Operating -40°C to +105°C

**Material Info**

**Reference - Drawing Numbers**

Packaging Specification PK-70107-100  
Product Specification PS-70400  
Sales Drawing SD-70107-0001-0024



**EU RoHS**  
**ELV and RoHS**  
**Compliant**  
**REACH SVHC**  
**Contains SVHC: No**  
**Halogen-Free**  
**Status**  
**Not Halogen-Free**

**China RoHS**



**Need more information on product environmental compliance?**

Email [productcompliance@molex.com](mailto:productcompliance@molex.com)  
For a multiple part number RoHS Certificate of Compliance, [click here](#)

Please visit the [Contact Us](#) section for any non-product compliance questions.

**Search Parts in this Series**  
[70107Series](#)

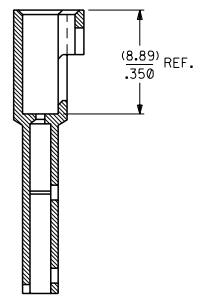
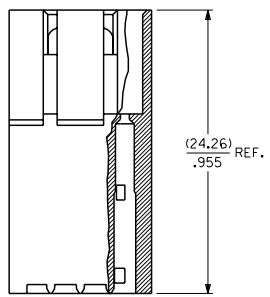
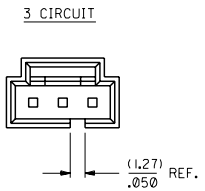
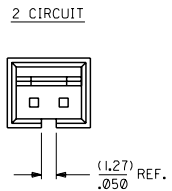
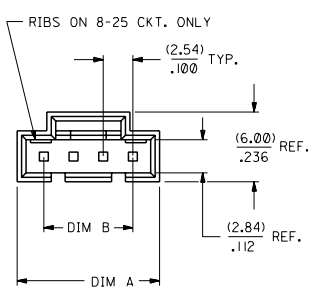
**Mates With**  
[70400G](#) , [70066g Housing](#), [70430g Receptacle](#)

**Use With**  
[70021](#)

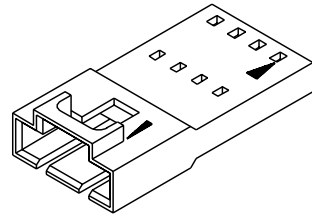
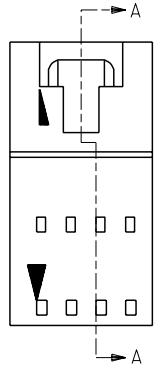
**PLEASE CHECK WWW.MOLEX.COM FOR LATEST PART INFORMATION**

13 12 11 10 9 8 7 6 70107 4 3 2 1

- NOTES:
- 1) MATERIAL: GLASS FILLED POLYESTER, UL 94V-0  
COLOR: BLACK
  - 2) HOUSING TO BE USED WITH TERMINAL  
PT. NO. 70021-\*\*\*\*.
  - 3) SEE CHART FOR CIRCUIT SIZES.
  - 4) TO BE USED WITH 70400 SERIES  
CONNECTORS (STYLE "C").
  - 5) PACKAGE PER PK-70107-100.



SECTION A-A



CKT. SIZE	EDP. NO.	ENG. NO.	A	B
2	701-07-0001	70107-0001	(7.11) .280	(2.54) .100
3	701-07-0002	70107-0002	(9.65) .380	(5.08) .200
4	701-07-0003	70107-0003	(12.19) .480	(7.62) .300
5	701-07-0004	70107-0004	(14.73) .580	(10.16) .400
6	701-07-0005	70107-0005	(17.27) .680	(12.70) .500
7	701-07-0006	70107-0006	(19.81) .780	(15.24) .600
8	701-07-0007	70107-0007	(22.35) .880	(17.78) .700
9	701-07-0008	70107-0008	(24.89) .980	(20.32) .800
10	701-07-0009	70107-0009	(27.43) 1.080	(22.86) .900
11	701-07-0010	70107-0010	(29.97) 1.180	(25.40) 1.000
12	701-07-0011	70107-0011	(32.51) 1.280	(27.94) 1.100
13	701-07-0012	70107-0012	(35.05) 1.380	(30.48) 1.200
14	701-07-0013	70107-0013	(37.59) 1.480	(33.02) 1.300
15	701-07-0014	70107-0014	(40.13) 1.580	(35.56) 1.400
16	701-07-0015	70107-0015	(42.67) 1.680	(38.10) 1.500
17	701-07-0016	70107-0016	(45.21) 1.780	(40.64) 1.600
18	701-07-0017	70107-0017	(47.75) 1.880	(43.18) 1.700
19	701-07-0018	70107-0018	(50.29) 1.980	(45.72) 1.800
20	701-07-0019	70107-0019	(52.83) 2.080	(48.26) 1.900
21	701-07-0020	70107-0020	(55.37) 2.180	(50.80) 2.000
22	701-07-0021	70107-0021	(57.91) 2.280	(53.34) 2.100
23	701-07-0022	70107-0022	(60.45) 2.380	(55.88) 2.200
24	701-07-0023	70107-0023	(62.99) 2.480	(58.42) 2.300
25	701-07-0024	70107-0024	(65.53) 2.580	(60.96) 2.400

H ADD PKG NOTE PER UJT2000-0468 SCHAFER 39/12/1 G REVISION PER ECR #UB1037 2/22/88 MJM F REDRAWN ON CAD ADD SHEET 2 PER ECR #5280 8/21/86 MJM LTR. REVISIONS LTR. REVISIONS		DIMENSIONS SHOWN IN METRIC INCH UNLESS OTHERWISE SPECIFIED TOLERANCES ANGULAR 1/2° 1 PLACE ± .010 --- 2 PLACE ± .014 ± 0.25 3 PLACE --- ± 0.35 DRAFT WHERE APPLICABLE MUST REMAIN WITHIN DIMENSIONS DRWG. BY RS APP'D. WAZ		REVISION ONLY ON CAD SYSTEM TITLE HOUSING, CONNECTOR (2.54)/.100 GRID VERSION "A" W/O LATCHES MOLEX INCORPORATED 135/E.J.L.L. 68932 U.S.A. SHEET NO. I DATE 07/02/86 PART NO. SD-70107-0001-0024 DRWG. NO. DA C THIS DRAWING CONTAINS INFORMATION THAT IS PROPRIETARY TO MOLEX INC. AND SHOULD NOT BE USED WITHOUT WRITTEN PERMISSION.	
--	--	--	--	---	--

13 12 11 10 9 8 7 6 5 4 3 2 1