

PLEASE CHECK WWW.MOLEX.COM FOR LATEST PART INFORMATION

Part Number: [0687830008](#)
Status: **Active**
Overview: [displayport](#)
Description: DisplayPort*-to-DisplayPort* Cable Assembly without Latches, 2.0m (6.56') Length

Documents:

[Drawing \(PDF\)](#) [RoHS Certificate of Compliance \(PDF\)](#)
[Product Specification PS-68783-001 \(PDF\)](#)

General

Product Family	Cable Assemblies
Series	68783
Connector to Connector	DisplayPort* Both Ends
Overview	displayport
Product Name	DisplayPort*

Physical

Cable Length	2.0m (6.56')
Circuits (Loaded)	20
Color - Resin	Black
Gender	Male-Male
Lock to Mating Part	No
Material - Metal	Brass, Stainless Steel
Material - Plating Mating	Gold
Material - Plating Termination	Tin
Material - Resin	ABS Alloy, High Temperature Thermoplastic
Packaging Type	Bag
Pitch - Mating Interface (in)	0.039 In
Pitch - Mating Interface (mm)	1.00 mm
Plating min: Mating (µin)	32
Plating min: Mating (µm)	0.8
Plating min: Termination (µin)	80
Plating min: Termination (µm)	2
Single Ended	No
Termination Interface: Style	Surface Mount
Waterproof / Dustproof	No
Wire Insulation Diameter	N/A
Wire Size AWG	30
Wire/Cable Type	Round

Electrical

Current - Maximum per Contact	0.5A
Impedance	100 ohms
Shield Type	Full Shield
Shielded	Yes
Voltage - Maximum	40V

Material Info

Reference - Drawing Numbers

Product Specification	PS-68783-001
Sales Drawing	SD-68783-005

*DisplayPort is a Trademark of VESA



EU RoHS
ELV and RoHS
Compliant
REACH SVHC
 Not Reviewed
Halogen-Free
Status
Not Reviewed

China RoHS



Need more information on product environmental compliance?

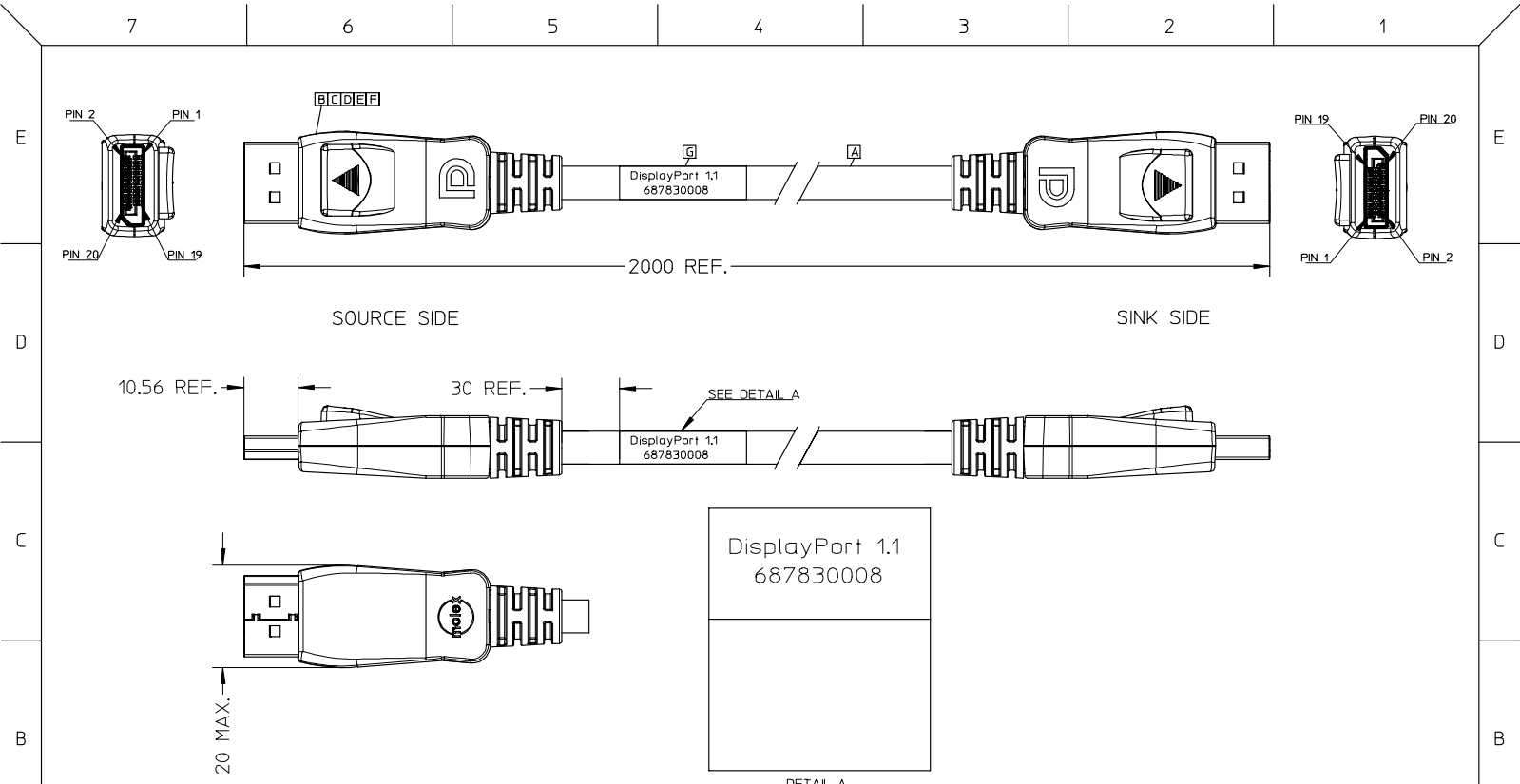
Email productcompliance@molex.com
 For a multiple part number RoHS Certificate of Compliance, [click here](#)

Please visit the [Contact Us](#) section for any non-product compliance questions.

Search Parts in this Series
[68783Series](#)

Mates With
[47272 DisplayPort* Receptacle](#)

PLEASE CHECK WWW.MOLEX.COM FOR LATEST PART INFORMATION



ENTER DESCRIPTION EC NO: DG2007-0155 DRWN: JLU13 CHKD: BLAU APPR: BLAU A	DESCRIPTION 2007/04/11 2007/04/13 2007/04/16	QUALITY SYMBOLS	GENERAL TOLERANCES (UNLESS SPECIFIED)		DIMENSION STYLE	SCALE	DESIGN UNITS	THIRD ANGLE PROJECTION	
		$\nabla=0$ $\nabla=0$	mm	INCH	MM ONLY	---	METRIC		
		4 PLACES	±---	±---	DRAWN BY	DATE	TITLE 2M DISPLAYPOR CABLE ASS'Y WITHOUT LATCH		
		3 PLACES	±---	±---	JLU13	2007/04/11			
2 PLACES	±---	±---	CHECKED BY	DATE	MOLEX INCORPORATED				
1 PLACE	±---	±---	BLAU	2007/04/11					
ANGULAR ±---°			DRAFT WHERE APPLICABLE MUST REMAIN WITHIN DIMENSIONS		APPROVED BY	DATE	MATERIAL NO.	DOCUMENT NO.	
					BLAU	2007/04/11	687830008	SD-68783-005	
					SIZE	THIS DRAWING CONTAINS INFORMATION THAT IS PROPRIETARY TO MOLEX INCORPORATED AND SHOULD NOT BE USED WITHOUT WRITTEN PERMISSION			
					A4	SHEET NO. 1 OF 2			

ib_frame_A4_P_ME_T
Rev. E 2006/04/15

7 6 5 4 3 2 1

WIRE DIAGRAM:

SHELL		BRAID	SHELL	
PIN 20	PWR		PIN 20	PWR
PIN 19	Re-PWR		PIN 19	Re-PWR
PIN 18	HPD		PIN 18	HPD
PIN 17	AUX(n)		PIN 17	AUX(n)
PIN 16	GND		PIN 16	GND
PIN 15	AUX(p)		PIN 15	AUX(p)
PIN 14	GND		PIN 14	GND
PIN 13	GND		PIN 13	GND
PIN 12	ML3(n)		PIN 1	ML3(n)
PIN 11	GND		PIN 2	GND
PIN 10	ML3(p)		PIN 3	ML3(p)
PIN 9	ML2(n)		PIN 4	ML2(n)
PIN 8	GND		PIN 5	GND
PIN 7	ML2(p)		PIN 6	ML2(p)
PIN 6	ML1(n)		PIN 7	ML1(n)
PIN 5	GND		PIN 8	GND
PIN 4	ML1(p)		PIN 9	ML1(p)
PIN 3	ML0(n)		PIN 10	ML0(n)
PIN 2	GND		PIN 11	GND
PIN 1	ML0(p)		PIN 12	ML0(p)
SOURCE SIDE	Pin Description		SINK SIDE	Pin Description

NOTE:

1. THIS PRODUCT MUST MEET MOLEX ROHS COMPLIANCE.
2. THE STRAIN RELIEF SHALL BE OVERMOLD WITH BLACK PVC .
3. THE CABLE ASSEMBLY CAN MEET DisplayPort SPECIFICATION 1.1 REVISION.

G	LABEL	172000487		1
F	COVER-UP WITHOUT LATCH	47271-1004		2
E	COVER-DOWN	47271-0005		2
D	INNER-SHELL-LOWER	47271-1009		2
C	INNER-SHELL-UPPER WITHOUT LATCH	47271-3008		2
B	PLUG SUB-ASS'Y CONN.	47271-1011		2
A	DisplayPort AWG30 CABLE		2000MM	1
ITEM	DESCRIPTION		LENGTH	QTY.

ENTER DESCRIPTION EC NO: DG2007-0155 DRWN: JLU13 CHYD:BLAU APPR:BLAU 2007/04/11 2007/04/13 2007/04/16	DESCRIPTION A	QUALITY SYMBOLS ▽=0 ▽=0	GENERAL TOLERANCES (UNLESS SPECIFIED)		DIMENSION STYLE	SCALE	DESIGN UNITS	THIRD ANGLE PROJECTION		
					MM ONLY	---	METRIC	☉		
					DRAWN BY	DATE	TITLE			
					CHECKED BY	DATE	2M DISPLAYPORT CABLE ASS'Y WITHOUT LATCH			
		ANGULAR ±---°		APPROVED BY	DATE	MOTEX MOLEX INCORPORATED				
		DRAFT WHERE APPLICABLE MUST REMAIN WITHIN DIMENSIONS		MATERIAL NO.	DOCUMENT NO.	SHEET NO.				
				687830008	SD-68783-005	2 OF 2				
		SIZE A4 THIS DRAWING CONTAINS INFORMATION THAT IS PROPRIETARY TO MOLEX INCORPORATED AND SHOULD NOT BE USED WITHOUT WRITTEN PERMISSION								

ib_frame_A4_P_ME_T
Rev. E 2006/04/15

6 5 4 3 2 1