

PLEASE CHECK WWW.MOLEX.COM FOR LATEST PART INFORMATION

Part Number: [0533143065](#)
Status: **Active**
Description: 2.00mm (.079") Pitch Mi II™ System Wire-to-Board Header, Dual Row, Vertical, with Eject Levers, Lead-free, 30 Circuits

Documents:

| | |
|--|--|
| 3D Model | Product Specification PS-51160-006 (PDF) |
| Drawing (PDF) | Product Specification PS-52478-002 (PDF) |
| Product Specification PS-51089-005 (PDF) | RoHS Certificate of Compliance (PDF) |

Agency Certification

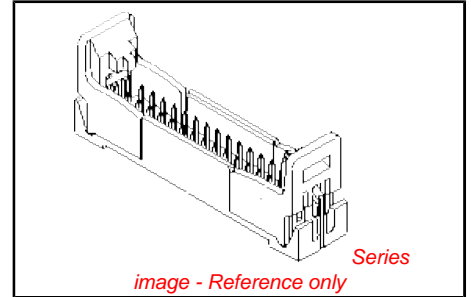
| | |
|-----|---------|
| CSA | LR19980 |
| UL | E29179 |

General

| | |
|----------------|---------------|
| Product Family | PCB Headers |
| Series | 53314 |
| Application | Wire-to-Board |
| Product Name | Mi II™ |

Physical

| | |
|--------------------------------|------------------|
| Breakaway | No |
| Circuits (Loaded) | 30 |
| Circuits (maximum) | 30 |
| Color - Resin | Gray |
| Durability (mating cycles max) | 30 |
| First Mate / Last Break | No |
| Flammability | 94V-0 |
| Glow-Wire Compliant | No |
| Guide to Mating Part | No |
| Keying to Mating Part | None |
| Lock to Mating Part | Yes |
| Material - Metal | Brass |
| Material - Plating Mating | Tin |
| Material - Plating Termination | Tin |
| Material - Resin | Nylon, Polyester |
| Number of Rows | 2 |
| Orientation | Vertical |
| PC Tail Length (in) | 0.138 In |
| PC Tail Length (mm) | 3.50 mm |
| PCB Locator | Yes |
| PCB Retention | None |
| PCB Thickness Recommended (in) | 0.062 In |
| PCB Thickness Recommended (mm) | 1.60 mm |
| Packaging Type | Tray |
| Pitch - Mating Interface (in) | 0.079 In |
| Pitch - Mating Interface (mm) | 2.00 mm |
| Plating min: Mating (µin) | 40 |
| Plating min: Mating (µm) | 1.00 |
| Plating min: Termination (µin) | 40 |
| Plating min: Termination (µm) | 1.00 |
| Polarized to PCB | Yes |
| Shrouded | Fully |
| Stackable | No |
| Surface Mount Compatible (SMC) | No |
| Temperature Range - Operating | -40°C to +105°C |



| | |
|--|--------------------------|
| <p>EU RoHS ELV and RoHS Compliant REACH SVHC Not Reviewed Halogen-Free Status Not Halogen-Free</p> | <p>China RoHS</p> |
|--|--------------------------|

Need more information on product environmental compliance?

Email productcompliance@molex.com
 For a multiple part number RoHS Certificate of Compliance, [click here](#)

Please visit the [Contact Us](#) section for any non-product compliance questions.

Search Parts in this Series
[53314Series](#)

Mates With
[52478 Wire-to-Board IDT Receptacle. 51089 Crimp Terminal](#)

Termination Interface: Style

Through Hole

Electrical

Current - Maximum per Contact

2A

Voltage - Maximum

125V

Material Info

Reference - Drawing Numbers

Product Specification

PS-51089-005, PS-51160-006, PS-52478-002,
RPS-51160-004, RPS-51160-005

Sales Drawing

SD-53314-**-15, SD-53314-001

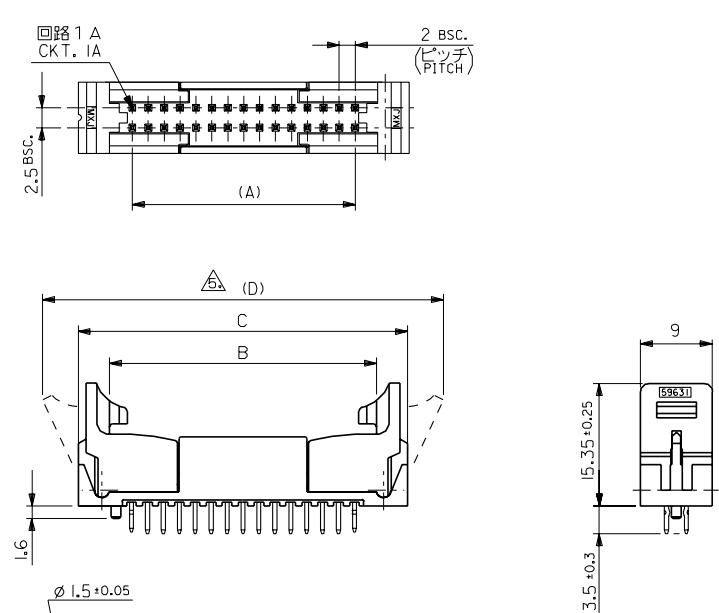
This document was generated on 04/16/2010

PLEASE CHECK WWW.MOLEX.COM FOR LATEST PART INFORMATION

ENG. NO. SD-53314-***15
EDP NO.

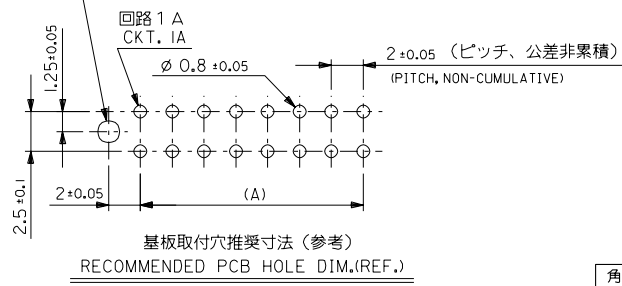
ALL DIMENSIONS IN METRIC DO NOT SCALE DRAWING

8 7 6 5 4 3 2 1



注記
NOTES

- 材料: ハウジング: ガラス入りポリエステル
MATERIALS: HOUSING : G.F. POLYESTER, UL94V-0, GRAY
ピン: 黄銅
PIN : BRASS (0.5mm, SQUARE)
- 仕上げ: Sn-Pbメッキ
PLATING : TIN-LEAD : 2-3 μm
銅下地メッキ
OVER COPPER : 1-2 μm
- 適合メスコネクタ
MATING CONNECTORS : 51089-***5, 52478-***15.
- 推奨基板厚:
RECOMMENDED PCB THICKNESS : t = 1.6mm
イジェクターが開いている状態。
EJECTORS IN OPEN POSITION



| | | | | | |
|------|------|------|-----|------------|------|
| 80.4 | 71.4 | 63.6 | 58 | 53314-6015 | 60 |
| 70.4 | 61.4 | 53.6 | 48 | -5015 | 50 |
| 60.4 | 51.4 | 43.6 | 38 | -4015 | 40 |
| 54.4 | 45.4 | 37.6 | 32 | -3415 | 34 |
| 50.4 | 41.4 | 33.6 | 28 | 53314-3015 | 30 |
| (D) | C | B | (A) | ENG. NO. | CKT. |

| | | | | | | |
|----------------------------|-------|---------------------------|-------------------------|-------------|----------------------|----------------------|
| A | | RELEASED | GMS H.1 | 92/2/21 | 材料 MATERIAL | 注記参照 SEE NOTES |
| 2 | | REVISED | GMS H.1 | 91/1/30 | 仕上げ FINISH | 注記参照 SEE NOTES |
| 角度 ANGLE | ±3° | 1 | REVISED | GMS H.1 | 適用電線範囲 WIRE RANGE | — |
| 30以上 OVER | ±0.3 | 0 | PROPOSED | GMS H.1 | 被覆外径 INS. RANGE | — |
| 10以上 OVER | ±0.25 | 記号 LTR | 変更内容 REVISION RECORD | DR. CHK. | 日付 DATE | DRAWN BY CHK'D BY |
| 10以下 UNDER | ±0.2 | REVISION RECORD | | DR. | 日付 | APP'D BY SCALE |
| 一般公差 GENERAL TOLERANCES | | REVISE ONLY ON CAD SYSTEM | | DR. | 日付 | 尺度 SCALE 2-1 |

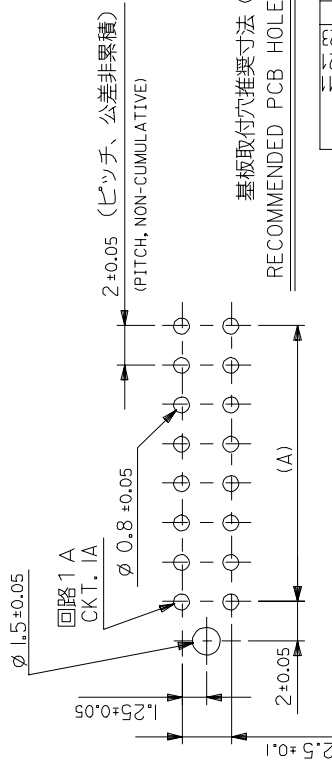
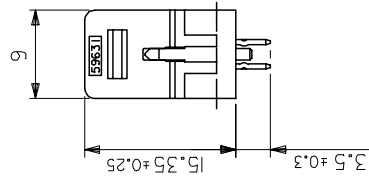
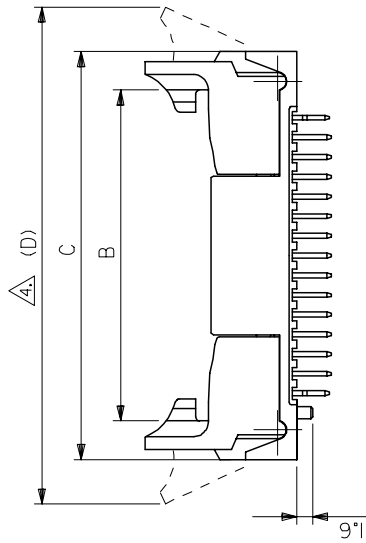
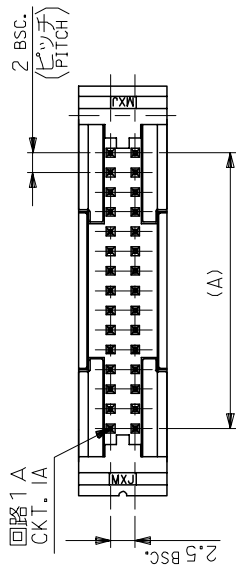
| | | | |
|-------------------------------------|----------------|--|---|
| MOLEX-JAPAN CO.,LTD. 日本モレックス株式会社 | | EDP. NO. | — |
| ENG. NO. | SD-53314-***15 | REV | A |
| TITLE 名称 | | 2mm W-to-B Dual Row Straight Header w/ Ejector Ass'y. | |

THIS DRAWING CONTAINS INFORMATION THAT IS PROPRIETARY TO MOLEX/JAPAN AND SHOULD NOT BE USED WITHOUT WRITTEN PERMISSION
本図面は日本モレックス(株)の所有する情報を含むもので 当社の許可なく複製を禁止する。 MXJ-8

注記
NOTES

1. 材料: MATERIALS:
ウエハ: ガラス入り 66 ナイロン UL94V-0 色: グレー
WAFER : GLASS FILL 66 NYLON UL94V-0, COLOR : GRAY
ピン : 黄銅、スズメッキ
PIN : BRASS, PRE-TINNED
2. 適合メスコネクタ: MATING CONNECTORS : 51089-***5, 52478-***15,
推奨基板厚: RECOMMENDED PCB THICKNESS : t
インジェクターが開いている状態。
EJECTORS IN OPEN POSITION
3. 推奨基板厚: RECOMMENDED PCB THICKNESS : t
インジェクターが開いている状態。
EJECTORS IN OPEN POSITION
4. 端子仕様: TERMINAL PLATING
表面メッキ : スズメッキ 1μm MIN.
SURFACE PLATE : TIN 1μm MIN.
下地メッキ : ニッケルメッキ 0.5μm MIN.
UNDER PLATE : NICKEL 0.5μm MIN.

無鉛
LEAD FREE



基板取付穴推奨寸法 (参考)

RECOMMENDED PCB HOLE DIM.(REF.)

| 80.4 | 71.4 | 63.6 | 58 | 53314-6065 | 60 |
|------|------|------|----|------------|----|
| 70.4 | 61.4 | 53.6 | 48 | -5065 | 50 |
| 60.4 | 51.4 | 43.6 | 38 | -4065 | 40 |
| 54.4 | 45.4 | 37.6 | 32 | -3465 | 34 |
| 50.4 | 41.4 | 33.6 | 28 | 53314-3065 | 30 |

| MM ONLY | SCALE | DESIGN UNITS | METRIC | THIRD ANGLE PROJECTION |
|---|---|--------------|--------|------------------------|
| DRAWN BY: A. IDA | 2:1 | | | |
| CHECKED BY: J. MIYAZAWA | TITLE | | | |
| DATE: 2003/05/07 | 2.0 W/B DUAL ROW S/T HEADER WITH EJECT ASSY | | | |
| DATE: 2003/05/07 | | | | |
| DATE: 2003/05/07 | | | | |
| DATE: 2003/05/07 | | | | |
| MATERIAL NO. SD-53314-001 | MOLEX INCORPORATED | | | |
| SEE CHART | SHEET NO. 1 OF 1 | | | |
| THIS DRAWING CONTAINS INFORMATION THAT IS PROPRIETARY TO MOLEX INCORPORATED AND SHOULD NOT BE USED WITHOUT WRITTEN PERMISSION | | | | |

| GENERAL TOLERANCES (UNLESS SPECIFIED) | DESCRIPTION |
|--|---------------------------|
| 10 UNDER ± 0.2 | APR: NUK1TA 2006/08/23 |
| 10 OVER 30 UNDER ± 0.25 | CHKD: HARUYAMA 2006/08/23 |
| 30 OVER ± 0.3 | DRW: KSAI1001 2006/08/13 |
| ANGULAR ± 3° | FC NO: J2007-0432 |
| DRAFT WHERE APPLICABLE MUST REMAIN WITHIN DIMENSIONS | |
| REVISED | |
| REVISED | |
| A | |

材料
MATERIAL

注記参照
SEE NOTES