

**PLEASE CHECK WWW.MOLEX.COM FOR LATEST PART INFORMATION**

**Part Number:** [0530151510](#)  
**Status:** **Active**  
**Description:** 2.00mm (.079") Pitch MicroBlade™ Wire-to-Board Header, Right Angle, 15 Circuits

**Documents:**

<a href="#">3D Model</a>	<a href="#">Product Specification PS-51004-002 (PDF)</a>
<a href="#">Drawing (PDF)</a>	<a href="#">RoHS Certificate of Compliance (PDF)</a>

**Agency Certification**

CSA	LR19980
UL	E29179

**General**

Product Family	PCB Headers
Series	53015
Application	Wire-to-Board
Product Name	MicroBlade™

**Physical**

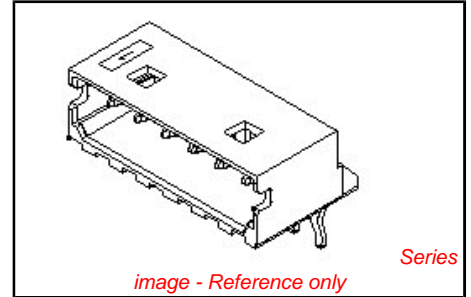
Breakaway	No
Circuits (Loaded)	15
Durability (mating cycles max)	30
First Mate / Last Break	No
Flammability	94V-0
Glow-Wire Compliant	No
Guide to Mating Part	No
Keying to Mating Part	None
Lock to Mating Part	Yes
Material - Metal	Phosphor Bronze
Material - Plating Mating	Tin
Material - Plating Termination	Tin
Material - Resin	Nylon
Number of Rows	1
Orientation	Right Angle
PC Tail Length (in)	0.138 In
PC Tail Length (mm)	3.50 mm
PCB Locator	No
PCB Retention	Yes
PCB Thickness Recommended (in)	0.062 In
PCB Thickness Recommended (mm)	1.60 mm
Packaging Type	Bag
Pitch - Mating Interface (in)	0.079 In
Pitch - Mating Interface (mm)	2.00 mm
Polarized to PCB	No
Shrouded	Fully
Stackable	No
Surface Mount Compatible (SMC)	No
Temperature Range - Operating	-20°C to +85°C
Termination Interface: Style	Through Hole

**Electrical**

Current - Maximum per Contact	2A
Voltage - Maximum	125V

**Material Info**

**Reference - Drawing Numbers**



<p><b>EU RoHS</b>  <b>ELV and RoHS</b>  <b>Compliant</b>  <b>REACH SVHC</b>          Not Reviewed  <b>Halogen-Free</b>  <b>Status</b>  <b>Not Reviewed</b></p>	<p><b>China RoHS</b></p> 
<p><b>Need more information on product environmental compliance?</b></p> <p>Email <a href="mailto:productcompliance@molex.com">productcompliance@molex.com</a>          For a multiple part number RoHS Certificate of Compliance, <a href="#">click here</a></p> <p>Please visit the <a href="#">Contact Us</a> section for any non-product compliance questions.</p>	

**Search Parts in this Series**  
[53015Series](#)

**Mates With**  
[51004 Crimp Housing](#). [50011 Crimp Terminal](#)

Product Specification

PS-51004-002, RPS-51004-002, RPS-51004-003,  
RPS-51004-008, RPS-51004-010, RPS-51004-011,  
RPS-51004-014, RPS-51004-015, RPS-51004-016,  
RPS-51004-017, RPS-51004-018, RPS-51004-019,  
RPS-51004-020, RPS-51004-021, RPS-51004-022,  
RPS-51004-023, RPS-51004-024, RPS-51004-025,  
RPS-53014-001  
SD-53015-\*\*10

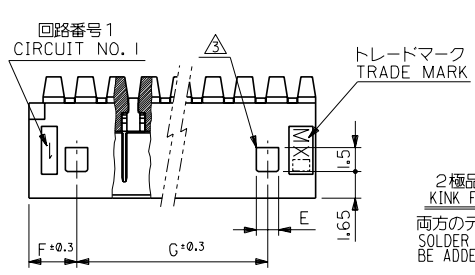
Sales Drawing

This document was generated on 04/15/2010

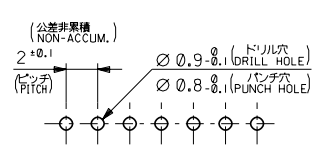
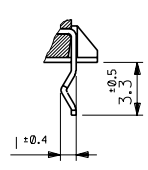
**PLEASE CHECK [WWW.MOLEX.COM](http://WWW.MOLEX.COM) FOR LATEST PART INFORMATION**

DWG. NO. SD-53015-10  
DIMENSIONS IN METRIC DO NOT SCALE DRAWING

8 7 6 5 4 3 2 1



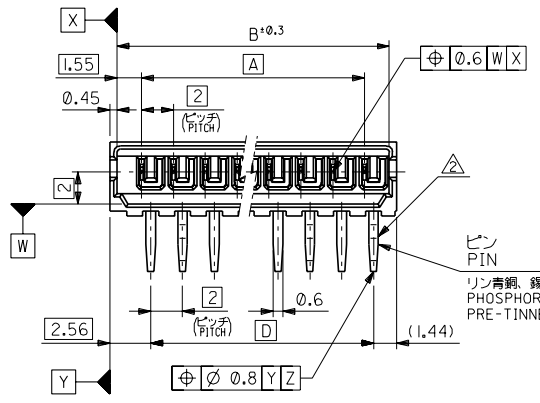
2極品のキング形態図  
KINK FORM FOR 2 CKTS.  
両方のテールにキングを施す。  
SOLDER TAIL KINK SHOULD  
BE ADDED ON BOTH TAILS.



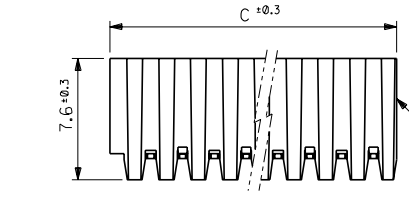
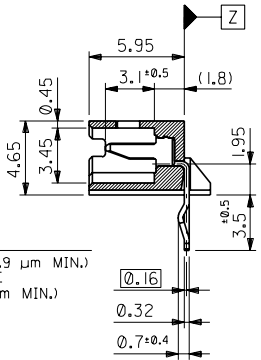
基板取付穴推奨寸法 (参考)  
RECOMMENDED P. C. BOARD HOLE DIM. (REF.)  
(t=1.6)

注記 NOTES

1. 嵌合相手 : 51004 シリーズ  
MATES WITH : 51004 SERIES
2. 3極以上のキングは、1極おきに2カ所以上に施すこと。  
KINK TO BE ADDED ON THE ODD NUMBER  
SOLDER TAILS.(FROM THE TRADE MARK SIDE)
3. ロック穴は、2極と3極は1カ所、4極以上は2カ所とする。  
LOCKING HOLE : ONE PLACE FOR 2 AND 3 CKTS.  
TWO PLACES FOR 4 AND MORE THAN 4 CKTS.



ピン  
PIN  
リン青銅、錫メッキ(0.9 μm MIN.)  
PHOSPHOR BRONZE  
PRE-TINNED(0.9 μm MIN.)



ウエハー  
WAFER  
ガラス繊維入りナイロン66 (カラー: オフホワイト)  
GLASS FILLED NYLON66 (COLOR: OFF-WHITE)  
UL94V-0

26	3	1.4	28	32	31.1	28	53015-1510	15
24	↑		26	30	29.1	26	↑ -1410	14
22			24	28	27.1	24	↑ -1310	13
20			22	26	25.1	22	↑ -1210	12
18			20	24	23.1	20	↑ -1110	11
16			18	22	21.1	18	↑ -1010	10
14			16	20	19.1	16	↑ -0910	9
12			14	18	17.1	14	↑ -0810	8
10			12	16	15.1	12	↑ -0710	7
8			10	14	13.1	10	↑ -0610	6
6	↓		8	12	11.1	8	↓ -0510	5
4	3	1.4	6	10	9.1	6	↓ -0410	4
—	4	3.4	4	8	7.1	4	↓ -0310	3
—	3	1.4	2	6	5.1	2	↓ 53015-0210	2
G	F	E	D	C	B	A	ENC. NO.	極数 NO. OF CKTS.

角度 ANGLE	±3°
30°以上 OVER	±0.3
10°以上 未満 OVER 30 UNDER	±0.25
10°未満 UNDER	±0.2
一般公差 GENERAL TOLERANCES	

材料 MATERIAL	図中参照 SEE DWG.
仕上げ FINISH	—
適用電線範囲 WIRE RANGE	—
被覆外径 INS. RANGE	—
再作図及び変更 REDRAWN & REVISED	UJ02/79
記号 LTR	変更内容 REVISION RECORD
DR./CHK.	H.J./M.F.
DATE	93/3/31

MOLEX-JAPAN CO., LTD. 日本モレックス株式会社
REVISE ONLY ON CAD SYSTEM
TITLE 名称 2.0 LOW PROFILE WAFER ASS'Y R/A
DWG. NO. SD-53015-10
REV E

THIS DRAWING CONTAINS INFORMATION THAT IS PROPRIETARY TO MOLEX/JAPAN AND SHOULD NOT BE USED WITHOUT WRITTEN PERMISSION  
本図面は日本モレックス(株)の所有する情報を含むもので、当社の許可なく複製を禁止する。  
EN-01C(032)MXJ-32

8 7 6 5 4 3 2 1