

PLEASE CHECK WWW.MOLEX.COM FOR LATEST PART INFORMATION

Part Number: [0481410003](#)
Status: **Active**
Description: 2.50mm (.098") Pitch, SDIO Memory Card Connector without Card Lock Pin, Reverse Mount, Stand Off Height 1.20mm (.047"), supports SD/MMC Cards, Lead-Free

Documents:

[3D Model](#)
[Drawing \(PDF\)](#)

[RoHS Certificate of Compliance \(PDF\)](#)

General

Product Family	Memory Card Sockets
Series	48141
Button Type	Push-Push
Comments	Supports SD/MMC Cards . With reinforced housing guide
Component Type	Header & Ejector (Host)
Product Name	SDIO
Type	N/A

Physical

Card Detection Switch	Yes
Circuits (Loaded)	9
Circuits (maximum)	9
Durability (mating cycles max)	10,000
Ejector Button Side	No Ejector Button Present
Entry Angle	90° Angle (Side Entry)
Keying to Mating Part	Yes
Material - Metal	Copper Alloy
Material - Plating Mating	Gold
Material - Plating Termination	Gold
Material - Resin	High Temperature Thermoplastic
PCB Locator	Yes
PCB Mounting Side	Reverse
PCB Retention	Yes
Packaging Type	Embossed Tape on Reel
Pitch - Mating Interface (in)	0.098 In
Pitch - Mating Interface (mm)	2.50 mm
Pitch - Term. Interface (in)	0.066 In, 0.098 In
Pitch - Term. Interface (mm)	1.70 mm, 2.50 mm
Ports	1
Surface Mount Compatible (SMC)	Yes
Temperature Range - Operating	-25°C to +90°C

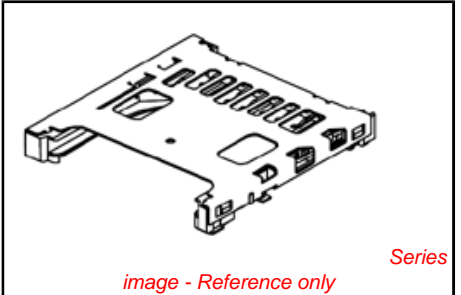
Electrical

Current - Maximum per Contact	0.5A
Shielded	Yes
Voltage - Maximum	250V DC

Material Info

Reference - Drawing Numbers

Sales Drawing	SD-48141-002
---------------	--------------



EU RoHS
ELV and RoHS
Compliant
REACH SVHC
Not Reviewed
Halogen-Free
Status
Not Reviewed

China RoHS



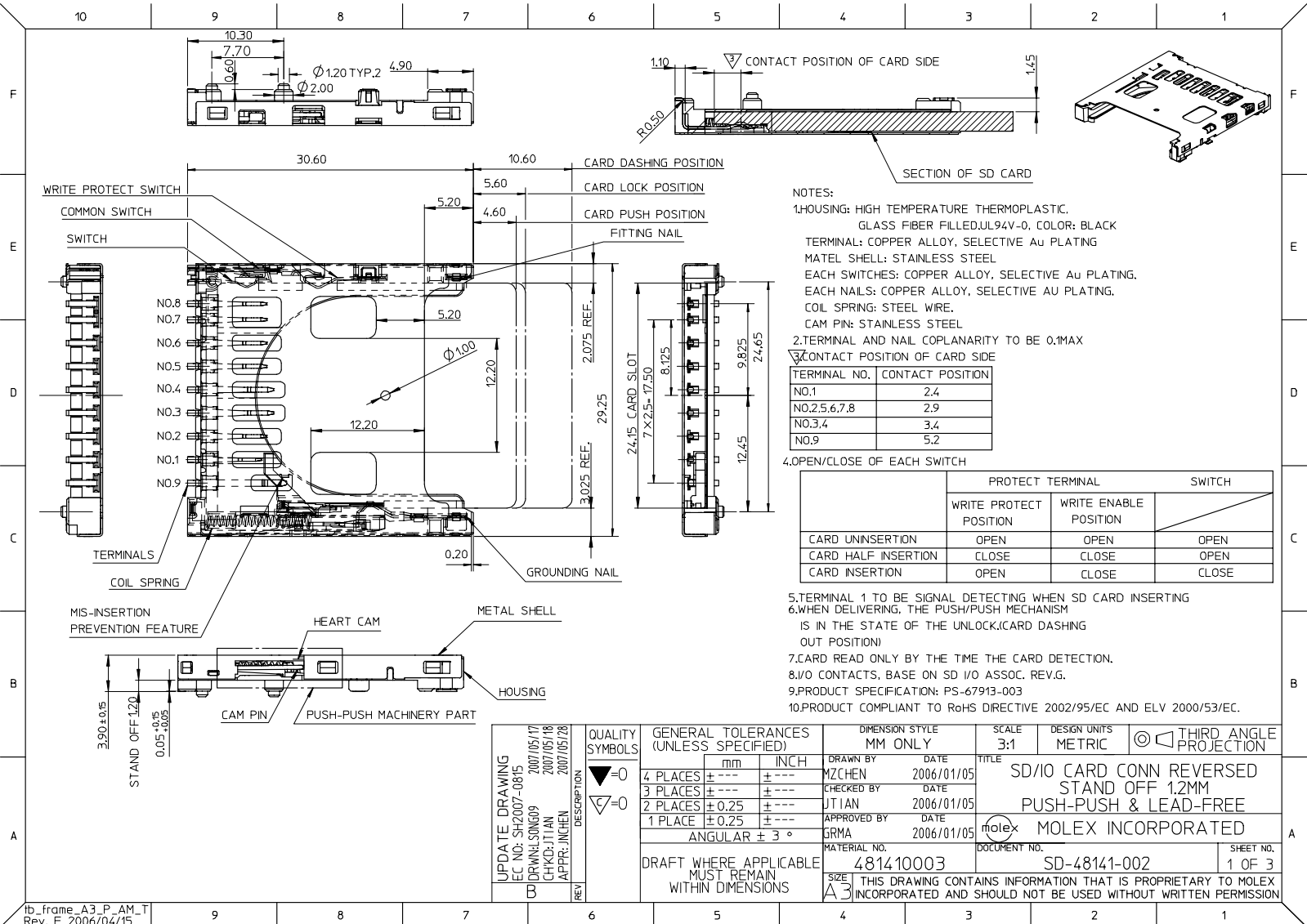
Need more information on product environmental compliance?

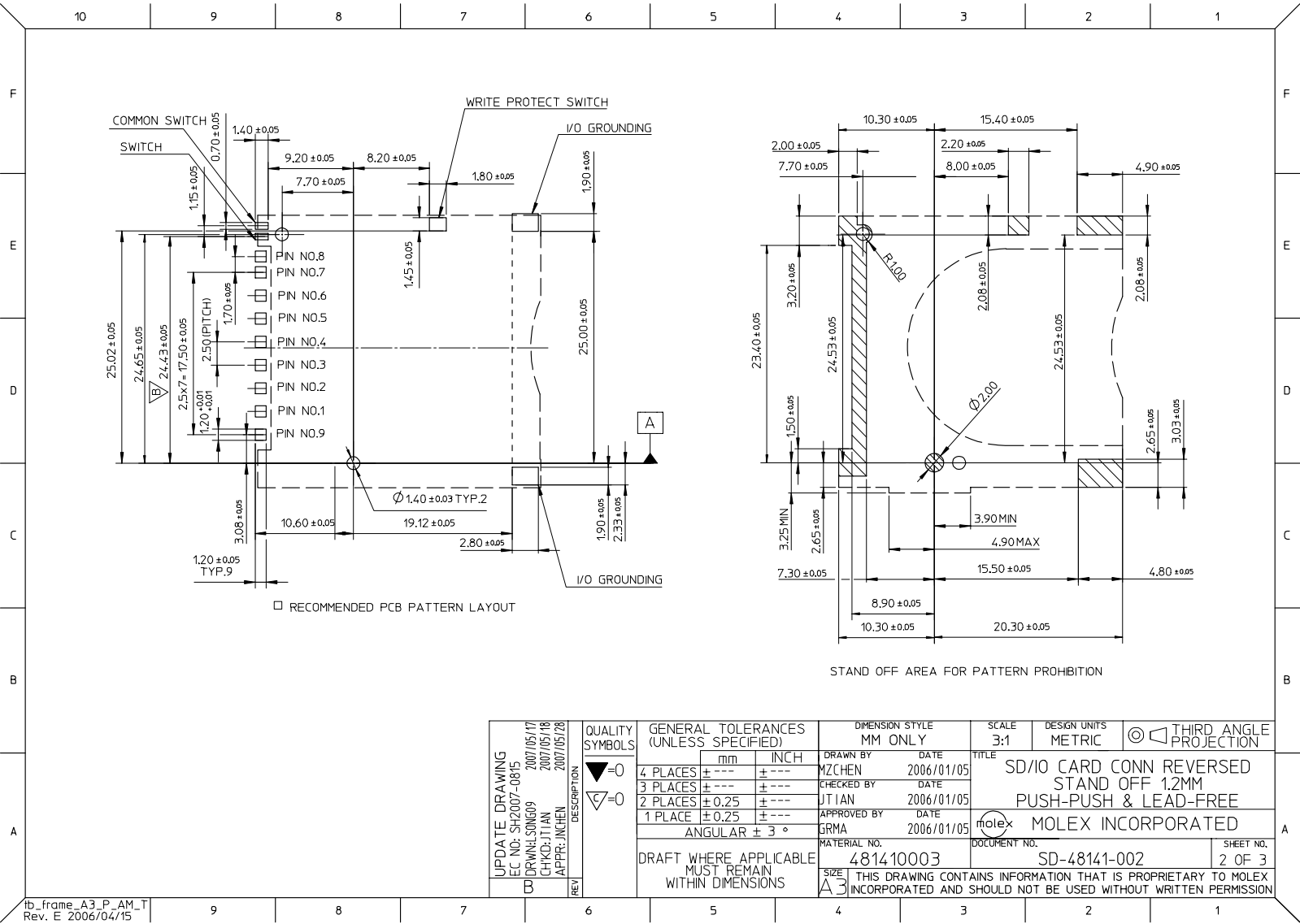
Email productcompliance@molex.com
For a multiple part number RoHS Certificate of Compliance, [click here](#)

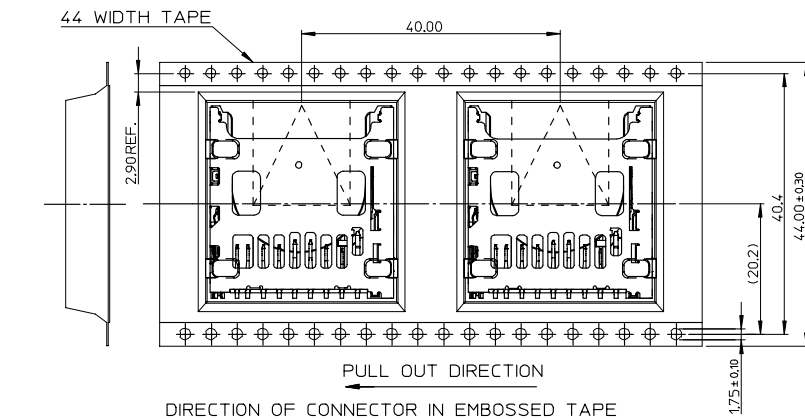
Please visit the [Contact Us](#) section for any non-product compliance questions.

Search Parts in this Series
[48141Series](#)

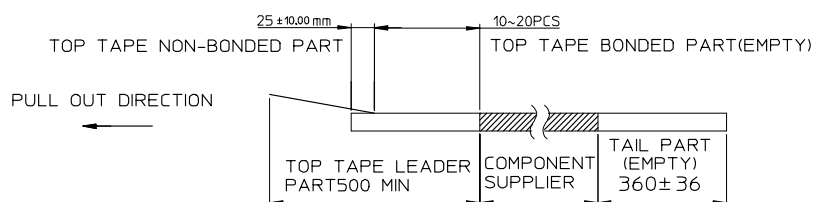
Mates With
Standard SD, MMC Cards



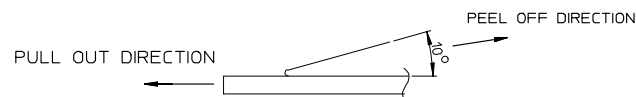




2.



3. PEEL OFF FORCE OF TOP TAPE: 0.1~1.3 N (10.2~130gf)
PEELING DIRECTION AS SHOWN IN FOLLOWING FIG.)
(PEEL OFF SPEED: 300mm/min.REF.)



4. PACKAGING DRAWING REFERS TO PK-48141-001.

UPDATE DRAWING EC NO: SH2007-0815 DRAWN:SONG07 CHKD:JTIAN APPR:JNCHEN 2007/05/17 2007/05/18 2007/05/28	DESCRIPTION	QUALITY SYMBOLS	GENERAL TOLERANCES (UNLESS SPECIFIED)		DIMENSION STYLE MM ONLY		SCALE 1:1	DESIGN UNITS METRIC	THIRD ANGLE PROJECTION	
		▼=0 ▽=0	mm	INCH	DRAWN BY MZCHEN	DATE 2006/01/05	TITLE SD/10 CARD CONN REVERSED STAND OFF 1.2MM PUSH-PUSH & LEAD-FREE MOLEX INCORPORATED			
			4 PLACES ±--- ±---		CHECKED BY JTIAN	DATE 2006/01/05				
			3 PLACES ±--- ±---		APPROVED BY GRMA	DATE 2006/01/05				
			2 PLACES ±0.25 ±---							
			1 PLACE ±0.25 ±---							
				ANGULAR ± 3 °		MATERIAL NO. 481410003		DOCUMENT NO. SD-48141-002		SHEET NO. 3 OF 3
		DRAFT WHERE APPLICABLE MUST REMAIN WITHIN DIMENSIONS		SIZE A THIS DRAWING CONTAINS INFORMATION THAT IS PROPRIETARY TO MOLEX INCORPORATED AND SHOULD NOT BE USED WITHOUT WRITTEN PERMISSION						