

PLEASE CHECK WWW.MOLEX.COM FOR LATEST PART INFORMATION

Part Number: [0441331208](#)
Status: **Active**
Overview: [microfit_30](#)
Description: 3.00mm (.118") Micro-Fit 3.0 BMI™ Receptacle Housing, Dual Row, Panel Mount, 12 Circuits, PBT Polyester, UL 94V-0, Halogen-Free

Documents:

[3D Model](#) [Product Specification PS-44300-001 \(PDF\)](#)
[Drawing \(PDF\)](#) [RoHS Certificate of Compliance \(PDF\)](#)

Agency Certification

CSA LR19980
TUV R72081037
UL E29179

General

Product Family Crimp Housings
Series [44133](#)
Comments Halogen Free
Overview [microfit_30](#)
Product Name Micro-Fit 3.0 BMI™

Physical

Circuits (maximum) 12
Color - Resin Black
Flammability 94V-0
Gender Female
Glow-Wire Compliant No
Lock to Mating Part None
Material - Resin Polyester
Number of Rows 2
Packaging Type Bag
Panel Mount Yes
Pitch - Mating Interface (in) 0.118 In
Pitch - Mating Interface (mm) 3.00 mm
Polarized to Mating Part Yes
Stackable No
Temperature Range - Operating -40°C to +105°C

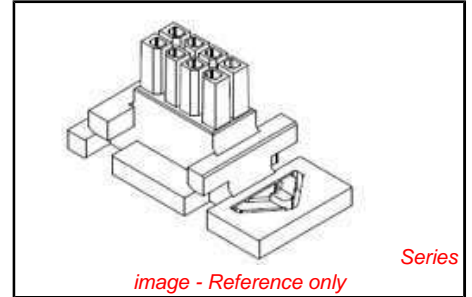
Electrical

Current - Maximum per Contact 5A

Material Info

Reference - Drawing Numbers

Packaging Specification PK-44133-002
Product Specification PS-44300-001
Sales Drawing SD-44133-003



| | |
|--|--------------------------|
| <p>EU RoHS ELV and RoHS Compliant REACH SVHC Contains SVHC: No Halogen-Free Status Halogen-Free</p> | <p>China RoHS</p> |
|--|--------------------------|

Need more information on product environmental compliance?

Email productcompliance@molex.com
For a multiple part number RoHS Certificate of Compliance, [click here](#)

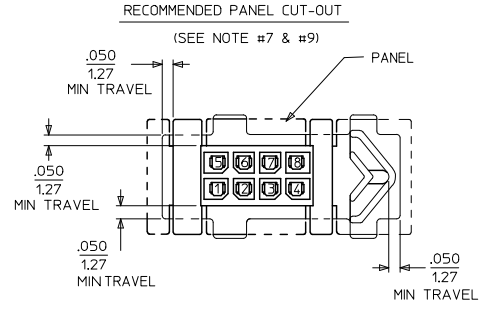
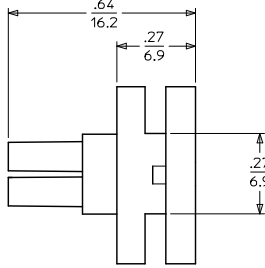
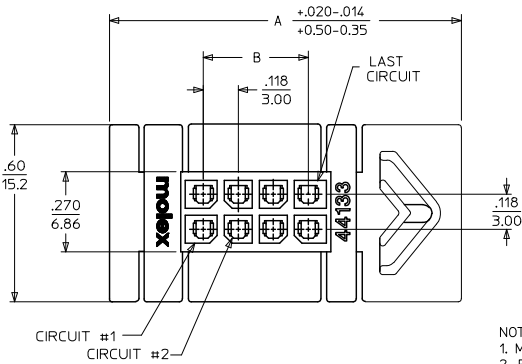
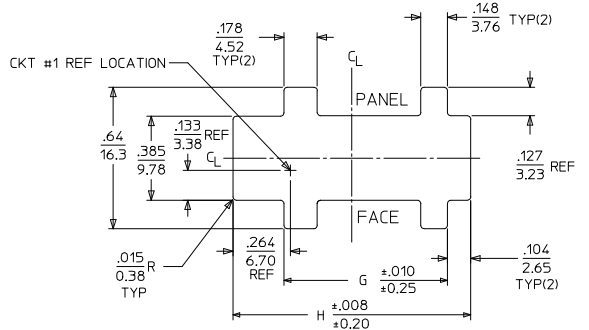
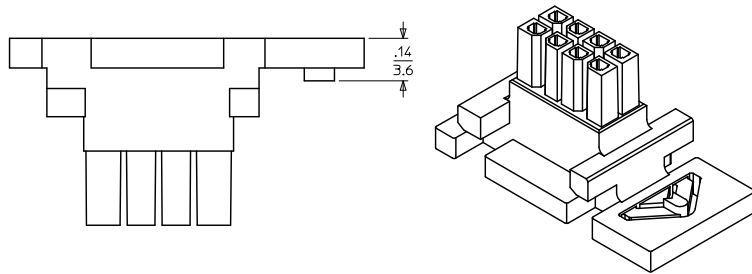
Please visit the [Contact Us](#) section for any non-product compliance questions.

Search Parts in this Series
[44133Series](#)

Use With
43030 Crimp Terminal

PLEASE CHECK WWW.MOLEX.COM FOR LATEST PART INFORMATION

13 12 11 10 9 8 7 6 5 4 3 2 1



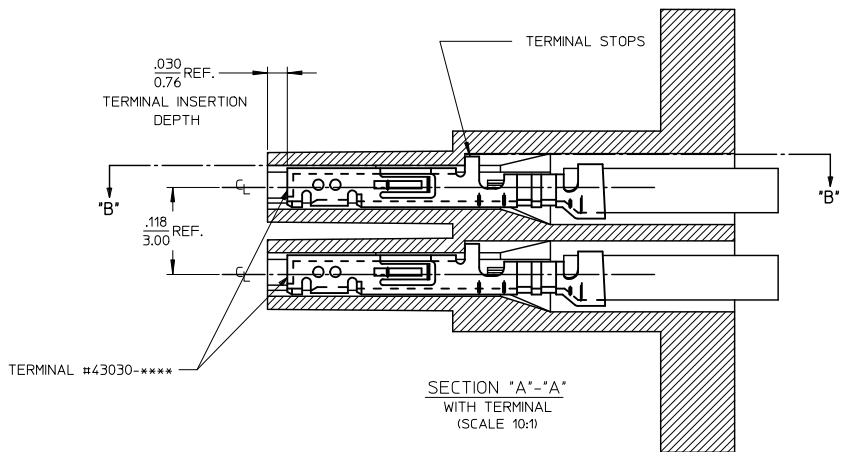
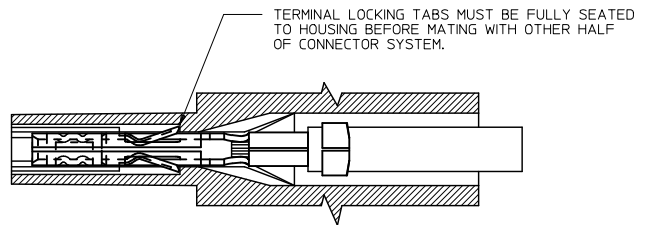
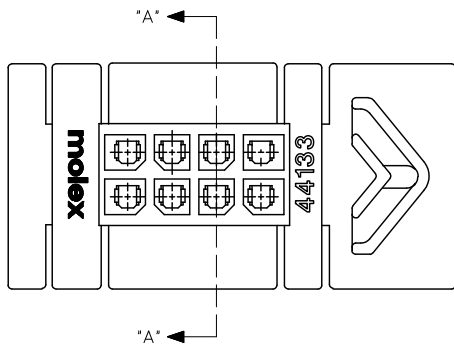
NOTES:

1. MATERIAL: UNFILLED NYLON 6, UL94V-0, COLOR: BLACK
2. FINISH: N/A
3. PRODUCT SPECIFICATION: PS-44300-001
4. PACKAGING SPECIFICATION: TRAY PACKED PER PK-44133-002
5. THIS RECEPTACLE MATES WITH MOLEX BMI PLUG 44300, MOLEX BMI VERTICAL PCB HEADER 44432, MOLEX BMI RIGHT ANGLE PCB HEADER 44428, & MOLEX BMI CPI VERTICAL PCB HEADER 45280.
6. THIS RECEPTACLE TO BE USED WITH MOLEX FEMALE CRIMP TERMINALS ONLY. (MOLEX DRAWING SD-43030-****)
7. THIS RECEPTACLE IS DESIGNED FOR USE WITH .060/1.52 MAX. TO .050/1.27 MINIMUM THICK PANELS. SEE SECTION "A"-A FOR TERMINAL ORIENTATION IN HOUSING.
8. DIMENSIONS GIVEN ACROSS CENTERLINES ARE SYMMETRICAL ABOUT THOSE CENTERLINES WITHIN THE TOTAL TOLERANCE.
9. WHEN MATING WITH 44300 SERIES, THE PANEL CUT-OUT CENTERLINES OF DIM "H" AND .385/9.78 MUST ALIGN WITH POINT "M" DEFINED BY MOLEX DRAWING SD-44300-001.
10. MOLEX RECOMMENDS THE USE OF MICRO-FIT TEST PLUG (SERIES 44242) WHENEVER CONTINUITY TESTING IS PERFORMED. TEST PLUGS MUST NOT BE USED TO MAKE OR BREAK UNDER LOAD. MOLEX DOES NOT RECOMMEND USING STANDARD MATING COMPONENTS (SERIES 44428, 44432, 44300 OR 45280) FOR HARNESS TESTING PURPOSES.
11. HOUSINGS MAY EXHIBIT A SURFACE IMPERFECTION KNOWN AS "SINK MARKS" UP TO .024/(0.60) MAX. THIS IS A COSMETIC DEFECT AND DOES NOT EFFECT FUNCTION OF THE CONNECTOR.
12. THIS PART CONFORMS TO CLASS "B" REQUIREMENTS OF COSMETIC SPECIFICATION PS-45499-002.

| CKT. SIZE | MATERIAL NUMBER | DIM 'A' | DIM 'B' | DIM 'G' | DIM 'H' |
|-----------|-----------------|---------|---------|---------|---------|
| 04 | 44133-0408 | .97 | .118 | .530 | .870 |
| | | 24.6 | 3.00 | 13.46 | 22.10 |
| 06 | 44133-0608 | 1.09 | .236 | .648 | .988 |
| | | 27.7 | 6.00 | 16.46 | 25.10 |
| 08 | 44133-0808 | 1.21 | .354 | .766 | 1.106 |
| | | 30.7 | 9.00 | 19.46 | 28.10 |
| 10 | 44133-1008 | 1.33 | .472 | .884 | 1.224 |
| | | 33.8 | 12.00 | 22.46 | 31.10 |
| 12 | 44133-1208 | 1.45 | .591 | 1.002 | 1.343 |
| | | 36.8 | 15.00 | 25.46 | 34.10 |
| 14 | | 1.57 | .709 | 1.120 | 1.461 |
| | | 39.9 | 18.00 | 28.46 | 37.10 |
| 16 | | 1.69 | .827 | 1.239 | 1.579 |
| | | 42.9 | 21.00 | 31.46 | 40.10 |
| 18 | | 1.81 | .945 | 1.357 | 1.697 |
| | | 46.0 | 24.00 | 34.46 | 43.10 |
| 20 | | 1.93 | 1.063 | 1.475 | 1.815 |
| | | 49.0 | 27.00 | 37.46 | 46.10 |
| 22 | | 2.04 | 1.181 | 1.593 | 1.933 |
| | | 51.8 | 30.00 | 40.46 | 49.10 |
| 24 | | 2.16 | 1.299 | 1.711 | 2.051 |
| | | 54.9 | 33.00 | 43.46 | 52.10 |

| | | | | | | | | |
|---|-------------------------------|---------------------------------------|--|--|--|---|---------------------|------------------------|
| ADD 6 AND 8 CKT EC NO. UCP2010-0829 DRWNS:SSOUSEK 2009/10/08 CHKCHK:PPER 2009/10/27 APPROV:SMITH 2009/10/27 | QUALITY SYMBOLS ▽=0 ▽=0 | GENERAL TOLERANCES (UNLESS SPECIFIED) | | DIMENSION STYLE IN/MM | | SCALE --- | DESIGN UNITS METRIC | THIRD ANGLE PROJECTION |
| | | 4 PLACES ± --- ± --- | | DRAWN BY GAVERRILL DATE 2008/07/02 | | TITLE MICRO-FIT (3.0) BMI FLOATING PANEL RECEPTACLE, HALOGEN-FREE | | |
| | | 3 PLACES ± --- ± .010 | | CHECKED BY SSOUSEK DATE 2008/07/09 | | MOLEX INCORPORATED | | |
| | | 2 PLACES ± 0.25 ± .014 | | APPROVED BY F-SMITH DATE 2008/07/16 | | MATERIAL NO. SD-44133-003 | | |
| 1 PLACE ± 0.35 ± --- | | ANGULAR ± 1/2° | | DRAFT WHERE APPLICABLE MUST REMAIN WITHIN DIMENSIONS | | SEE CHART | | SHEET NO. 1 OF 2 |

12 11 10 9 8 7 6 5 4 3 2 1



| | | | | | | | | |
|---|--------------------------------|---|-----------------------|---------------------------------|--|------------------------------|------------------------|------------------------|
| INITIAL RELEASE EC NO: LCP2009-1371 DRN:SSOUSEK 2008/11/26 CHK:MKIPPER 2008/12/02 APPR:FSMITH 2008/12/02 | QUALITY SYMBOLS | GENERAL TOLERANCES (UNLESS SPECIFIED) | | DIMENSION STYLE IN/MM | | SCALE --- | DESIGN UNITS METRIC | THIRD ANGLE PROJECTION |
| | | 4 PLACES ± --- ± --- | DRAWN BY SSOUSEK | DATE 2008/11/24 | TITLE MICRO-FIT (3.0) BMI FLOATING PANEL RECEPTACLE, HALOGEN-FREE | | | |
| | | 3 PLACES ± --- ± .010 | CHECKED BY MKIPPER | DATE 2008/11/25 | MOLEX MOLEX INCORPORATED | | | |
| | | 2 PLACES ± 0.25 ± .014 1 PLACE ± 0.35 ± --- ANGULAR ± 1/2° | APPROVED BY FSMITH | DATE 2008/11/26 | MATERIAL NO. SEE CHART | DOCUMENT NO. SD-44133-003 | SHEET NO. 2 OF 2 | |
| DRAFT WHERE APPLICABLE MUST REMAIN WITHIN DIMENSIONS | | THIS DRAWING CONTAINS INFORMATION THAT IS PROPRIETARY TO MOLEX INCORPORATED AND SHOULD NOT BE USED WITHOUT WRITTEN PERMISSION | | | | | | |

ib_frame_C_P_ME_T
Rev. E 2006/04/15

12

11

10

9

8

7

6

5

4

3

2

1