

PLEASE CHECK WWW.MOLEX.COM FOR LATEST PART INFORMATION

Part Number: [0351641002](#)
Status: **Active**
Description: 2.50mm (.098") Pitch Board-In Housing, 10 Circuits, Red

Documents:

[Drawing \(PDF\)](#) [RoHS Certificate of Compliance \(PDF\)](#)
[Product Specification PS-35164-001 \(PDF\)](#)

General

Product Family Crimp Housings
 Series [35164](#)
 Product Name Board-In

Physical

Circuits (maximum) 10
 Circuits Detail 10
 Color - Resin Red
 Gender Male
 Glow-Wire Compliant No
 Keying to Mating Part None
 Lock to Mating Part No
 Material - Resin Nylon
 Number of Rows 1
 Packaging Type Bag
 Panel Mount No
 Pitch - Mating Interface (in) 0.098 In
 Pitch - Mating Interface (mm) 2.50 mm
 Polarized to Mating Part No
 Stackable No
 Temperature Range - Operating -40°C to +105°C

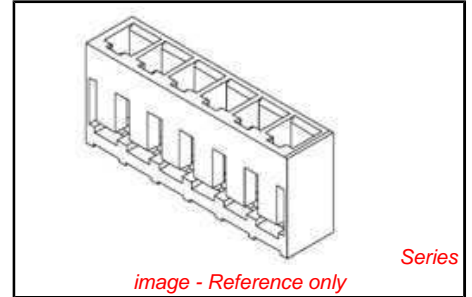
Electrical

Current - Maximum per Contact 3A

Material Info

Reference - Drawing Numbers

Product Specification PS-35164-001
 Sales Drawing SD-35164-**0*



EU RoHS **China RoHS**

Compliance Status

Not Reviewed

REACH SVHC

Not Reviewed

Halogen-Free

Status

Not Reviewed

Need more information on product environmental compliance?

Email productcompliance@molex.com
 For a multiple part number RoHS Certificate of Compliance, [click here](#)

Please visit the [Contact Us](#) section for any non-product compliance questions.

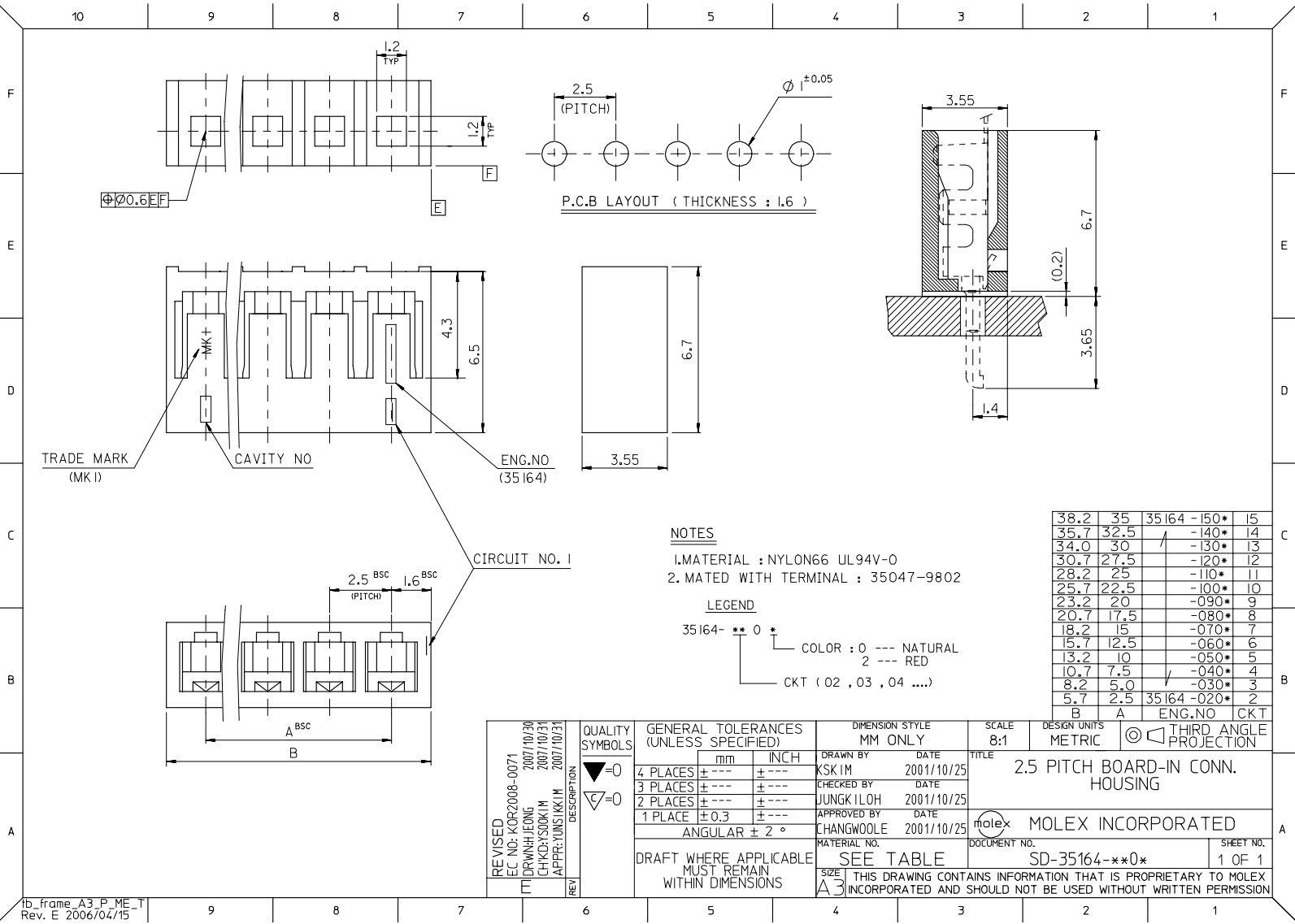
Search Parts in this Series

[35164Series](#)

Mates With

[350479802 Board-In Terminal](#)

PLEASE CHECK WWW.MOLEX.COM FOR LATEST PART INFORMATION



TRADE MARK (MK I)

CAVITY NO

ENG.NO (35164)

CIRCUIT NO. 1

NOTES

- 1. MATERIAL : NYLON66 UL94V-0
- 2. MATED WITH TERMINAL : 35047-9802

LEGEND

35164- ** 0 *
 COLOR : 0 --- NATURAL
 2 --- RED
 CKT (02 , 03 , 04)

38.2	35	35164 -150*	15
35.7	32.5	-140*	14
34.0	30	-130*	13
30.7	27.5	-120*	12
28.2	25	-110*	11
25.7	22.5	-100*	10
23.2	20	-090*	9
20.7	17.5	-080*	8
18.2	15	-070*	7
15.7	12.5	-060*	6
13.2	10	-050*	5
10.7	7.5	-040*	4
8.2	5.0	-030*	3
5.7	2.5	35164 -020*	2
B	A	ENG.NO	CKT

REVISED EC NO: KOR2008-0071 DRAWN: JONG 2007/10/30 CHECK: SSKIM 2007/10/31 APPR: JUNGKILOH 2007/10/31	QUALITY SYMBOLS ▽=0 ▽=0	GENERAL TOLERANCES (UNLESS SPECIFIED)		DIMENSION STYLE MM ONLY		SCALE 8:1	DESIGN UNITS METRIC	THIRD ANGLE PROJECTION		
		mm	INCH	DRAWN BY	DATE	TITLE 2.5 PITCH BOARD-IN CONN. HOUSING MOLEX INCORPORATED MATERIAL NO. SD-35164-**0* DOCUMENT NO. 1 OF 1				
		4 PLACES ± ---	± ---	KSKIM	2001/10/25					
		3 PLACES ± ---	± ---	CHECKED BY	DATE					
2 PLACES ± ---	± ---	JUNGKILOH	2001/10/25	APPROVED BY CHANGWOOLE 2001/10/25						
1 PLACE ± 0.3	± ---	ANGULAR ± 2 °		DRAFT WHERE APPLICABLE MUST REMAIN WITHIN DIMENSIONS SEE TABLE THIS DRAWING CONTAINS INFORMATION THAT IS PROPRIETARY TO MOLEX INCORPORATED AND SHOULD NOT BE USED WITHOUT WRITTEN PERMISSION						