

PLEASE CHECK WWW.MOLEX.COM FOR LATEST PART INFORMATION

Part Number: [0351500394](#)
Status: **Active**
Overview: [versablade](#)
Description: 1.78mm (.070") Tab Wire-to-Wire TPA™, 7.30mm (.287") Pitch, 3 Circuits, Blue

Documents:

| | |
|--|--|
| 3D Model | Product Specification PS-35524-001 (PDF) |
| Drawing (PDF) | RoHS Certificate of Compliance (PDF) |
| Product Specification PS-35150-001 (PDF) | |

Agency Certification

| | |
|-----|-----------|
| CSA | LR19980 |
| TUV | R72090206 |
| UL | E29179 |

General

| | |
|----------------|--|
| Product Family | Accessories |
| Series | 35150 |
| Comments | 35150 VersaBlade™ Hybrid Receptacle Housing, 35151 |
| Component Type | Retainer |
| Overview | versablade |
| Product Name | VersaBlade™ |

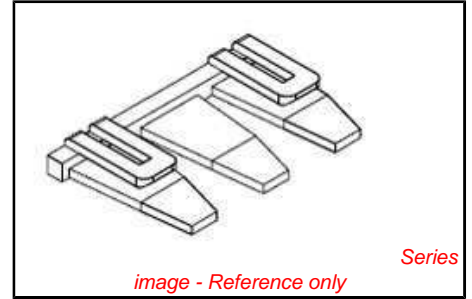
Physical

| | |
|-------------------------------|-----------------|
| Circuits (Loaded) | 3 |
| Color - Resin | Natural |
| Flammability | 94V-0 |
| Lock to Mating Part | Yes |
| Material - Resin | Nylon |
| Number of Rows | 1 |
| Packaging Type | Bag |
| Temperature Range - Operating | -40°C to +120°C |

Material Info

Reference - Drawing Numbers

| | |
|-----------------------|----------------------------|
| Product Specification | PS-35150-001, PS-35524-001 |
| Sales Drawing | SD-35150-039* |



| | |
|--|--------------------------|
| <p>EU RoHS ELV and RoHS Compliant REACH SVHC Contains SVHC: No Halogen-Free Status Halogen-Free</p> | <p>China RoHS</p> |
|--|--------------------------|

Need more information on product environmental compliance?

Email productcompliance@molex.com
 For a multiple part number RoHS Certificate of Compliance, [click here](#)

Please visit the [Contact Us](#) section for any non-product compliance questions.

Search Parts in this Series
[35150Series](#)

Use With
 Mandatory TPA™ Clip, [43914-1104](#) ,
[43938-2104](#)

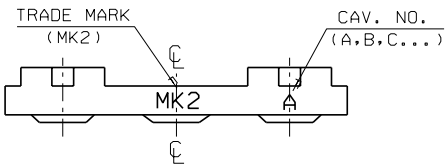
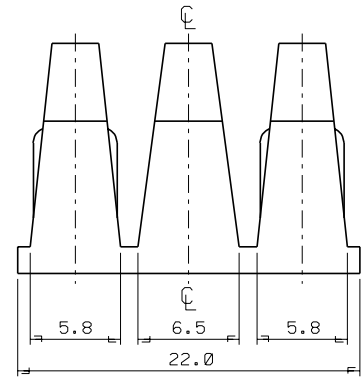
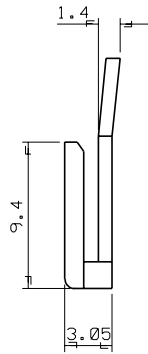
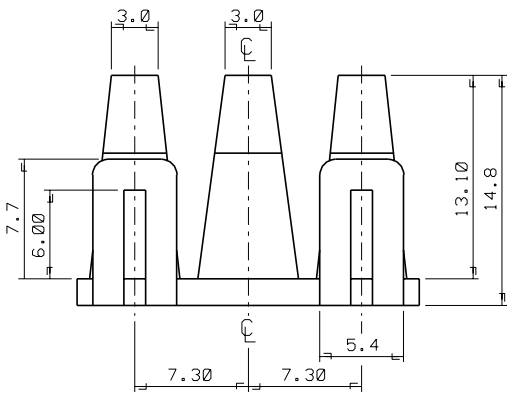
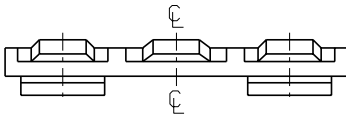
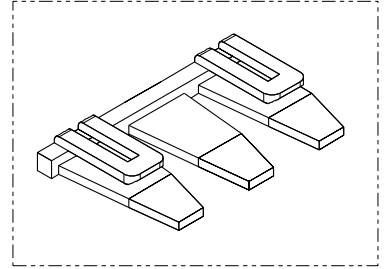
PLEASE CHECK WWW.MOLEX.COM FOR LATEST PART INFORMATION

ENG. NO. SD 35150-039*
 EDP. NO.
 SIMILAR ITEM
 PROJECT NO. 070 W/W CONN'

8 7 6 5 4 3 2 1

NOTES

1. MATERIAL : NYLON 66 (UL94V-2)
2. COLOR : 35150-0390 (NATURAL)
 35150-0392 (RED)
 35150-0393 (YELLOW)
 35150-0394 (BLUE)
3. MATCHED HOUSING : 35150-030*/031*
 35151-031*
 35150-060*/061*
 35151-061*



| | | | | | | | |
|---------------------------|-----------------|--------|----------|------------------------------------|--|---------------------------------------|-----------|
| | | | | MATERIAL SEE NOTES | | molex MOLEX-KOREA CO.,LTD. | |
| | | | | GENERAL TOLERANCE DIMENSION : +0.3 | | DRAWN BY J.S.KANG | |
| | | | | ANGLE : +1° | | CHK'D BY | |
| B | REVISED | 95-127 | 95-11-22 | DIMENSION CLASSIFICATION | | APP'D BY | SCALE 4/1 |
| A | NEW RELEASED | | 92-9-14 | ▽ : CRITICAL ▼ : MAJOR | | TITLE: 7.3 PITCH W/W CONN' T,P,A - 3P | |
| LTR | REVISION RECORD | ECN | DATE | ASS'Y PART DESCRIPTION ENG. NO. | | SHEET 1 OF 1 | |
| REVISE ONLY ON CAD SYSTEM | | | | --- | | ENG. NO. SD 35150-039* REV B | |

S1500390.DGN

THIS DRAWING CONTAINS INFORMATION THAT IS PROPRIETARY TO MOLEX(KOREA) AND SHOULD NOT BE USED WITHOUT WRITTEN PERMISSION MX-A3(ANSI:290,420)