

PLEASE CHECK WWW.MOLEX.COM FOR LATEST PART INFORMATION

Part Number: [0334822001](#)
Status: **Active**
Overview: [mx150 sealed connector system](#)
Description: 3.50mm (.138") Pitch MX150™ Sealed Male Connector, Dual Row, 20 Circuits, Polarization A, without Connector Position Assurance, Black

Documents:

[3D Model](#)
[Application Specification \(PDF\)](#)
[Drawing \(PDF\)](#)
[Product Specification PS-33472-000 \(PDF\)](#)
[RoHS Certificate of Compliance \(PDF\)](#)

General

Product Family
Series
Comments
More Detailed Tech Information
Overview
Product Name
Crimp Housings
33482
No Connector Position Assurance (CPA)
<http://ewcap.uscarteams.org>
[mx150 sealed connector system](#)
MX150™

Physical

Circuits (maximum)
Circuits Detail
Color - Resin
Gender
Glow-Wire Compliant
Keying to Mating Part
Lock to Mating Part
Material - Resin
Number of Rows
Packaging Type
Panel Mount
Pitch - Mating Interface (in)
Pitch - Mating Interface (mm)
Polarized to Mating Part
Stackable
Temperature Range - Operating
20
20
Black, Natural
Male
No
Yes
Yes
Modified Polystyrene Alloy
2
Bag
No
0.138 In
3.50 mm
Yes
No
-40°C to +125°C

Electrical

Current - Maximum per Contact 22A

Material Info

Reference - Drawing Numbers

Application Specification AS-33472-100
Packaging Specification PK-31300-635
Product Specification PS-33472-000
Sales Drawing ES-E1AB-14A485-AA, SD-33482-201



EU RoHS

ELV and RoHS Compliant
REACH SVHC Contains SVHC: No
Halogen-Free Status
Not Reviewed

China RoHS



Need more information on product environmental compliance?

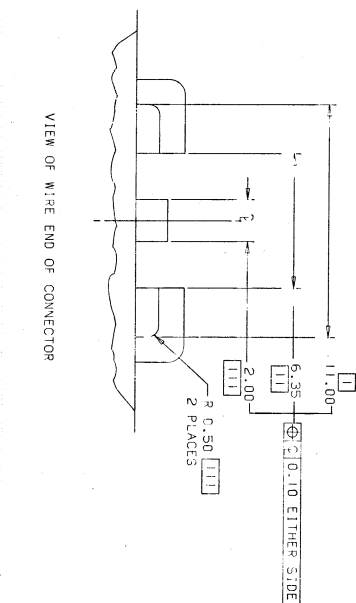
Email productcompliance@molex.com
For a multiple part number RoHS Certificate of Compliance, [click here](#)

Please visit the [Contact Us](#) section for any non-product compliance questions.

Search Parts in this Series
[33482Series](#)

Mates With
33472 Female Dual Row Sealed Connector

Use With
33000 MX150™ Tin (Sn) Male Terminal,
33011 Gold (Au) Male Terminal

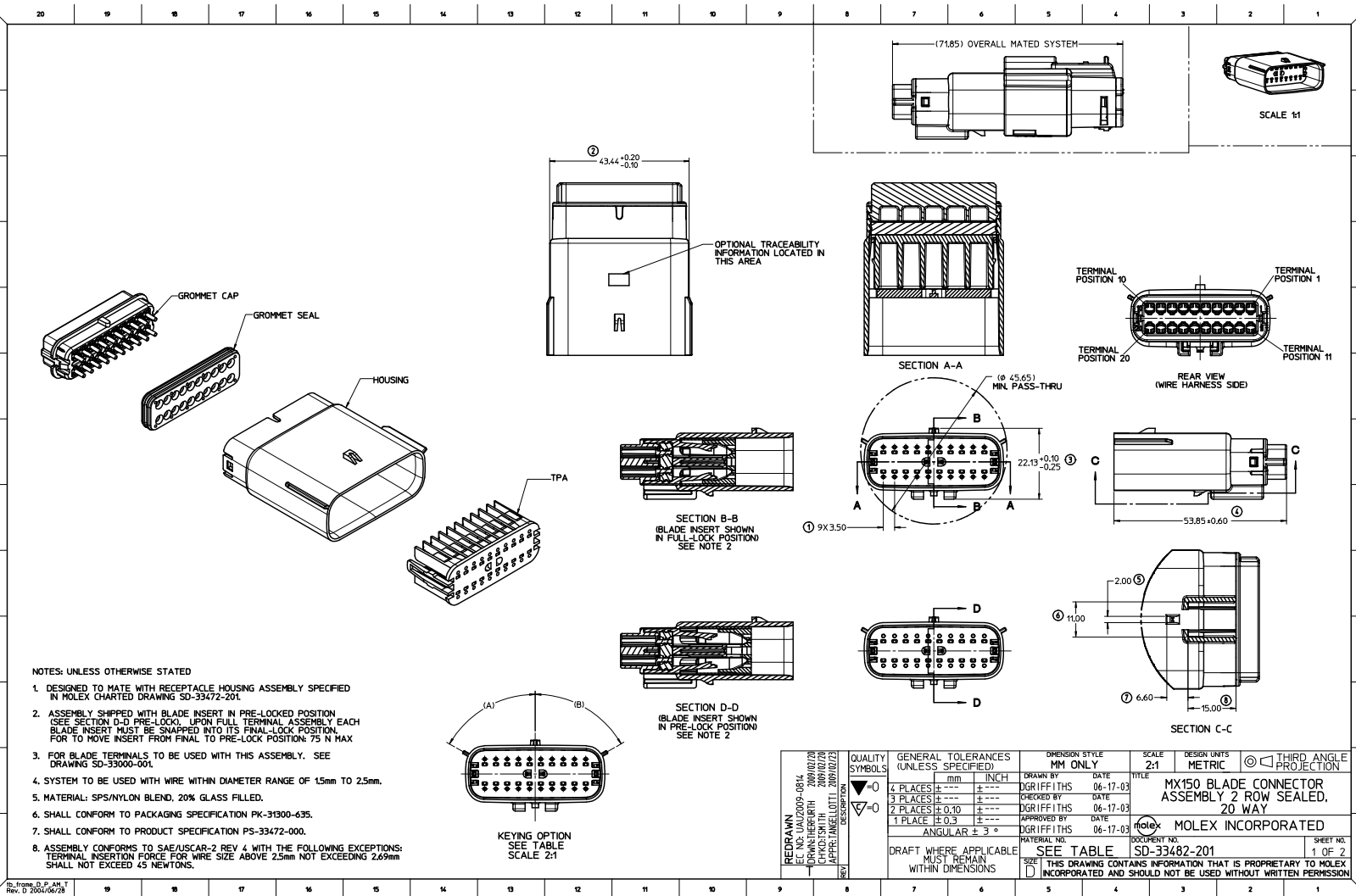


VIEW OF WIRE END OF CONNECTOR

NOTE: UNLESS OTHERWISE SPECIFIED

GENERAL TOLERANCES:
:0.10 ALL TWO PLACE DIMENSIONS
:0.3 ALL ONE PLACE DIMENSIONS
:1.0 ALL ANGULAR DIMENSIONS
0.5° MAXIMUM DRAFT ANGLE
0.3 MAXIMUM RADIUS PERMISSIBLE ON ALL EDGES AND
FILLETS SHOWN AS SHARP
ALL RADI: 0.8
MAX. THICKNESS 1.3-1.0

[illegible]



NOTES: UNLESS OTHERWISE STATED

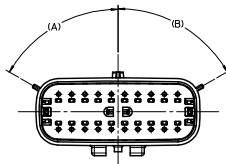
1. DESIGNED TO MATE WITH RECEPTACLE HOUSING ASSEMBLY SPECIFIED IN MOLEX CHARTED DRAWING SD-33472-201.
2. ASSEMBLY SHIPPED WITH BLADE INSERT IN PRE-LOCKED POSITION (SEE SECTION D-D PRE-LOCK). UPON FULL TERMINAL ASSEMBLY EACH BLADE INSERT MUST BE SNAPPED INTO ITS FINAL-LOCK POSITION. FOR TO MOVE INSERT FROM FINAL TO PRE-LOCK POSITION: 75 N MAX.
3. FOR BLADE TERMINALS TO BE USED WITH THIS ASSEMBLY. SEE DRAWING SD-33000-001.
4. SYSTEM TO BE USED WITH WIRE WITHIN DIAMETER RANGE OF 1.5mm TO 2.5mm.
5. MATERIAL: SPS/NYLON BLEND, 20% GLASS FILLED.
6. SHALL CONFORM TO PACKAGING SPECIFICATION PK-31300-635.
7. SHALL CONFORM TO PRODUCT SPECIFICATION PS-33472-000.
8. ASSEMBLY CONFORMS TO SAE/USCAR-2 REV 4 WITH THE FOLLOWING EXCEPTIONS: TERMINAL INSERTION FORCE FOR WIRE SIZE ABOVE 2.5mm NOT EXCEEDING 2.69mm SHALL NOT EXCEED 45 NEWTONS.

KEYING OPTION
SEE TABLE
SCALE 2:1

REVISION REV. 1 DATE: 06/17/03 BY: DGRFFITHS CHKD: SMITH APPR: JAMELOTTI	DESCRIPTION GENERAL TOLERANCES (UNLESS SPECIFIED) 4 PLACES ± .001 3 PLACES ± .002 2 PLACES ± .003 1 PLACE ± .005 ANGULAR ± 3° DRAFT WHERE APPLICABLE MUST REMAIN WITHIN DIMENSIONS	DIMENSION STYLE MM ONLY		SCALE 2:1		DESIGN UNITS METRIC		THIRD ANGLE PROJECTION	
		DRAWN BY DGRFFITHS		DATE 06-17-03		TITLE MX150 BLADE CONNECTOR ASSEMBLY 2 ROW SEALED, 20 WAY		MOLEX INCORPORATED	
		CHECKED BY DGRFFITHS		DATE 06-17-03		DOCUMENT NO. SD-33482-201		SHEET NO. 1 OF 2	
		APPROVED BY JAMELOTTI		DATE 06-17-03		THIS DRAWING CONTAINS INFORMATION THAT IS PROPRIETARY TO MOLEX INCORPORATED AND SHOULD NOT BE USED WITHOUT WRITTEN PERMISSION			

20 19 18 17 16 15 14 13 12 11 10 9 8 7 6 5 4 3 2 1

ASSEMBLY PART NUMBER	COLOR	KEYING OPTION	DIMENSIONS		CAVITY TYPE & STATUS (X = PLUGGED)																				
			A	B	1	2	3	4	5	6	7	8	9	10	11	12	13	14	15	16	17	18	19	20	
33482-2001	BLACK	A	60°	60°																					
33482-2002	LT GRAY	B	25°	60°																					
33482-2003	BROWN	C	60°	25°																					
33482-2004	GREEN	D	25°	25°																					
33482-2005	CUSTOM	TBD																							
33482-2006	BLACK	A	60°	60°																					X
33482-2007	BLACK	A	60°	60°												X									
33482-2008	BLACK	A	60°	60°				X	X	X	X								X	X	X	X			
33482-2009	BLACK	A	60°	60°							X									X					
33482-2010	BLACK	A	60°	60°										X	X	X									X
33482-2011	BLACK	A	60°	60°				X	X																X
33482-2012	BLACK	A	60°	60°				X	X							X	X	X							X
33482-2013	BLACK	A	60°	60°				X	X						X	X	X	X	X						X
33482-2014	BLACK	A	60°	60°					X	X	X								X						X
33482-2015	BLACK	A	60°	60°				X	X	X															
33482-2016	BLACK	A	60°	60°				X														X	X	X	
33482-2017	BLACK	A	60°	60°																		X	X	X	
33482-2018	BLACK	A	60°	60°											X		X	X	X						X
33482-2019	BLACK	A	60°	60°					X	X								X				X			X
33482-2020	BLACK	A	60°	60°					X	X	X							X				X	X	X	X
33482-2021	BLACK	A	60°	60°				X	X	X	X				X			X				X	X	X	X
33482-2022	BLACK	A	60°	60°					X	X								X				X	X	X	X
33482-2023	BLACK	A	60°	60°											X	X	X					X	X	X	X
33482-2024	BLACK	A	60°	60°														X	X	X					X
33482-2025	BLACK	A	60°	60°									X						X	X	X				X



KEYING OPTION
SEE TABLE
SCALE 2:1

ENTER DESCRIPTION ENTER MATERIAL ENTER DATE CHKD: SMTH APPR: JAMELOTTI 2006/02/23	QUALITY SYMBOLS ▽=0 ▽=0	GENERAL TOLERANCES (UNLESS SPECIFIED)		DIMENSION STYLE MM ONLY		SCALE 2:1	DESIGN UNITS METRIC	THIRD ANGLE PROJECTION	TITLE MX150 BLADE CONNECTOR ASSEMBLY 2 ROW SEALED, 20 WAY	
		4 PLACES ±.000	±.000	DRAWN BY DGRFFTHS	DATE 06-17-03	CHECKED BY DGRFFTHS				
DRAFT WHERE APPLICABLE MUST REMAIN WITHIN DIMENSIONS	SIZE D	3 PLACES ±.010	±.010	APPROVED BY DGRFFTHS		DATE 06-17-03		MOLEX INCORPORATED	SHEET NO. 2 OF 2	
		2 PLACES ±.030	±.030	MATERIAL NO. 9999999999		DOCUMENT NO. SD-33482-201				
THIS DRAWING CONTAINS INFORMATION THAT IS PROPRIETARY TO MOLEX INCORPORATED AND SHOULD NOT BE USED WITHOUT WRITTEN PERMISSION										