

**PLEASE CHECK WWW.MOLEX.COM FOR LATEST PART INFORMATION**

**Part Number:** [0191640011](#)  
**Status:** **Active**  
**Description:** Perma-Seal™ 3-Way Connector Assembly for 18-22 AWG Wire

**Documents:**

[Drawing \(PDF\)](#) [RoHS Certificate of Compliance \(PDF\)](#)

**General**

Product Family	Splices
Series	<a href="#">19164</a>
Crimp Quality Equipment	Yes
Mil-Spec	N/A
Product Name	3 Way, Perma-Seal™

**Physical**

Barrel Type	Closed
Insulation	NiAc™
Material - Metal	Copper
Packaging Type	Bag
Temperature Range - Operating	-55°C to +125°C
Termination Interface: Style	Crimp or Compression
Wire Insulation Diameter	5.46mm (.215") max
Wire Size AWG	18, 20, 22
Wire Size mm²	0.38 - 0.96

**Electrical**

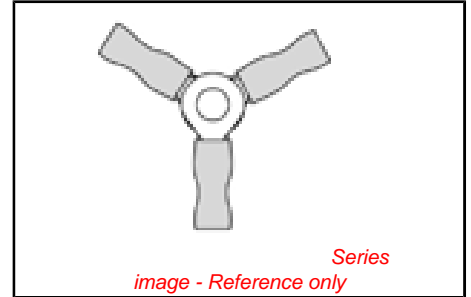
Voltage - Maximum	600V
-------------------	------

**Material Info**

Old Part Number	SA-2YCX
-----------------	---------

**Reference - Drawing Numbers**

Sales Drawing	SD-19164-051, SD-19204-001
---------------	----------------------------



**EU RoHS**  
**ELV and RoHS**  
**Compliant**  
**REACH SVHC**  
 Not Reviewed  
**Halogen-Free**  
**Status**  
**Not Reviewed**

**China RoHS**



**Need more information on product environmental compliance?**

Email [productcompliance@molex.com](mailto:productcompliance@molex.com)  
 For a multiple part number RoHS Certificate of Compliance, [click here](#)

Please visit the [Contact Us](#) section for any non-product compliance questions.

**Search Parts in this Series**  
[19164Series](#)

**Application Tooling | FAQ**

*Tooling specifications and manuals are found by selecting the products below. Crimp Height Specifications are then contained in the Application Tooling Specification document.*

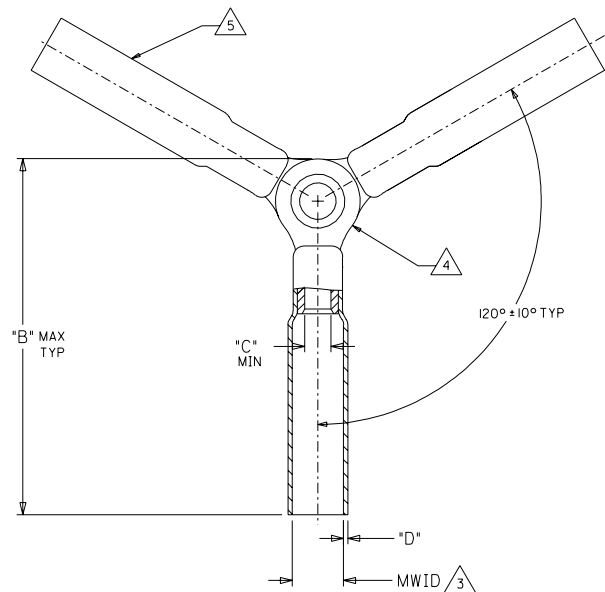
**Global**

Description	Product #
Power Crimp Tool Head for Perma-Seal™ Terminals 10-22 AWG	<a href="#">0640057400</a>
Hand Crimp Tool, UL Approved	<a href="#">0640017400</a>

**PLEASE CHECK WWW.MOLEX.COM FOR LATEST PART INFORMATION**

SD-19164-051

MATERIAL NUMBER	ENGINEERING NUMBER	WIRE SIZE AWG	WIRE SIZE MM SQ.	PERMA-SEAL COLOR	MWID	B MAX	C MIN	D
191640011	SA-2YCX	22-18	.25-1.5	RED	.215/5.46	1.25/31.8	.62/1.57	.025/0.64
191640042	SB-2YCX	16-14	1.0-2.5	BLUE	.235/5.97	1.24/31.5	1.24/31.5	.029/0.74
191640074	SC-2YCX	12-10	4.0-6.0	YELLOW	.310/7.62	1.34/34.0	1.28/3.25	.029/0.74



- NOTES:
1. CONNECTION BETWEEN TERMINALS TO BE TIGHT.
  2. RIVET NOT TO BE SPLIT.
  3. MWID = MAXIMUM WIRE INSULATION DIAMETER.
  4. TERMINAL MATERIAL: COPPER ALLOY.
  5. INSULATION MATERIAL: HEAT SHRINKABLE TUBING WITH HOTMELT ADHESIVE INNER LINER. COLOR SEE CHART.

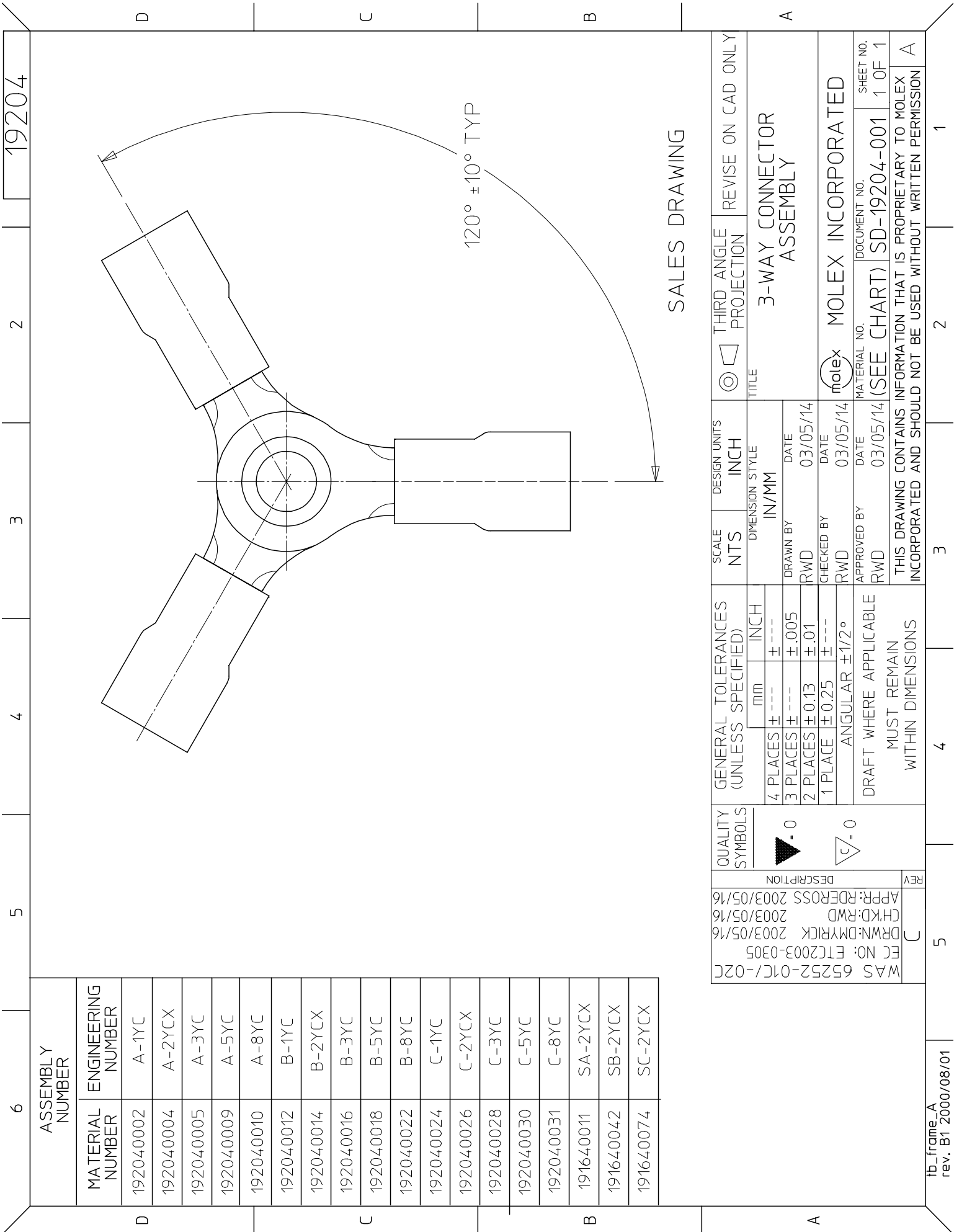
SALES DRAWING

NEW RELEASE EC NO. E122003-0136 DRAWN: BRE 03/03/20 CHK: HEB 03/03/20 APPR: RWD 03/03/20	QUALITY SYMBOLS MAJOR = 0 CRITICAL = 0	GENERAL TOLERANCES: (UNLESS SPECIFIED) mm      INCH 4 PLACES ±0.      ±. 3 PLACES ±0.      ±. 2 PLACES ±0.      ±. 1 PLACE ±0.      ±. ANGULAR: ± °	SCALE: NO: NE DESIGN UNITS: <input type="checkbox"/> mm <input checked="" type="checkbox"/> INCH DRAWN BY & DATE: BRE 02/11/15 CHECKED BY & DATE: HEB 02/11/15 APPROVED BY & DATE: RWD 15/11/15	DIMENSIONS: <input type="checkbox"/> mm <input checked="" type="checkbox"/> INCH <input type="checkbox"/> mm ONLY THIRD ANGLE PROJECTION	SHT REV REVISE ON CAD ONLY
	TITLE: 3-WAY NIAC CONNECTOR ASSEMBLY				
	MOLEX INCORPORATED				
	CAD FILENAME: E-19164-051.DGN		MATERIAL NO.: SEE CHART		DRAWING NO.: SD-19164-051

DRAFT WHERE APPLICABLE MUST REMAIN WITHIN DIMENSIONS

THIS DRAWING CONTAINS INFORMATION THAT IS PROPRIETARY TO MOLEX INCORPORATED AND SHOULD NOT BE USED WITHOUT WRITTEN PERMISSION.

SHEET NO. 1 OF 1  
SIZE B



6 5 4 3 2 19204

ASSEMBLY NUMBER	
MATERIAL NUMBER	ENGINEERING NUMBER
192040002	A-1YC
192040004	A-2YCX
192040005	A-3YC
192040009	A-5YC
192040010	A-8YC
192040012	B-1YC
192040014	B-2YCX
192040016	B-3YC
192040018	B-5YC
192040022	B-8YC
192040024	C-1YC
192040026	C-2YCX
192040028	C-3YC
192040030	C-5YC
192040031	C-8YC
191640011	SA-2YCX
191640042	SB-2YCX
191640074	SC-2YCX

SALES DRAWING

WAS 65252-01C/-02C EC NO: ETIC2003-0305 DRWN:DMYRCK 2003/05/16 CHKD:RWD 2003/05/16 APPR:RDEROSS 2003/05/16	DESCRIPTION	QUALITY SYMBOLS	GENERAL TOLERANCES (UNLESS SPECIFIED)	SCALE NTS	DESIGN UNITS INCH	THIRD ANGLE PROJECTION	REVISE ON CAD ONLY
		▲ - 0	mm INCH 4 PLACES ± --- ± --- 3 PLACES ± --- ± .005 2 PLACES ± 0.13 ± .01 1 PLACE ± 0.25 ± --- ANGULAR ± 1/2°		DIMENSION STYLE IN/MM	3-WAY CONNECTOR ASSEMBLY	
		△ - 0	DRAFT WHERE APPLICABLE MUST REMAIN WITHIN DIMENSIONS		DRAWN BY DATE RWD 03/05/14	MOLEX INCORPORATED	
					CHECKED BY DATE RWD 03/05/14		
					APPROVED BY DATE RWD 03/05/14		
					MATERIAL NO. DOCUMENT NO. MOLEX INCORPORATED (SEE CHART) SD-19204-001		
							SHEET NO. 1 OF 1

fb\_frame\_A rev. B1 2000/08/01 5 4 3 2 1