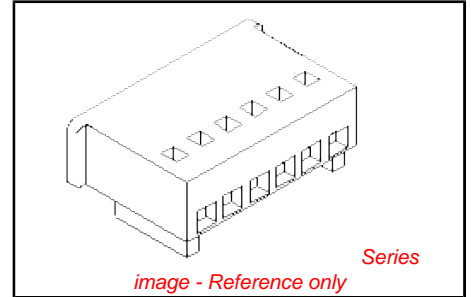


PLEASE CHECK WWW.MOLEX.COM FOR LATEST PART INFORMATION

Part Number: [0022011094](#)
Status: **Active**
Overview: sp0X
Description: 2.50mm (.098") Pitch SPOX™ Wire-to-Wire and Wire-to-Board Receptacle Housing, 9 Circuits

Documents:

| | |
|---|---|
| 3D Model | Product Specification PS-5102-002 (PDF) |
| Drawing (PDF) | Product Specification PS-5102-004 (PDF) |
| Product Specification PS-5045-001 (PDF) | RoHS Certificate of Compliance (PDF) |
| Product Specification PS-5045-002 (PDF) | |



Agency Certification

| | |
|-----|-----------|
| CSA | LR19980 |
| TUV | R72090224 |
| UL | E29179 |

General

| | |
|----------------|----------------|
| Product Family | Crimp Housings |
| Series | 5102 |
| Overview | sp0X |
| Product Name | SPOX™ |

Physical

| | |
|-------------------------------|-----------------|
| Circuits (maximum) | 9 |
| Color - Resin | Natural |
| Flammability | 94V-0 |
| Gender | Female |
| Glow-Wire Compliant | No |
| Lock to Mating Part | Yes |
| Material - Resin | Nylon |
| Number of Rows | 1 |
| Packaging Type | Bag |
| Panel Mount | No |
| Pitch - Mating Interface (in) | 0.098 In |
| Pitch - Mating Interface (mm) | 2.50 mm |
| Polarized to Mating Part | Yes |
| Stackable | No |
| Temperature Range - Operating | -40°C to +105°C |

Material Info

| | |
|-----------------|---------|
| Old Part Number | 5102-09 |
|-----------------|---------|

Reference - Drawing Numbers

| | |
|-----------------------|--|
| Product Specification | PS-5045-001, PS-5045-002, PS-5102-002, PS-5102-004 |
| Sales Drawing | SD-5102-001 |

| | |
|--|--------------------------|
| <p>EU RoHS ELV and RoHS Compliant REACH SVHC Contains SVHC: No Halogen-Free Status Not Reviewed</p> | <p>China RoHS</p> |
|--|--------------------------|

Need more information on product environmental compliance?

Email productcompliance@molex.com
 For a multiple part number RoHS Certificate of Compliance, [click here](#)

Please visit the [Contact Us](#) section for any non-product compliance questions.

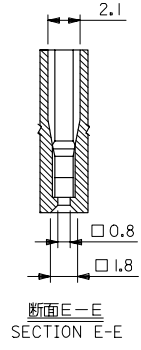
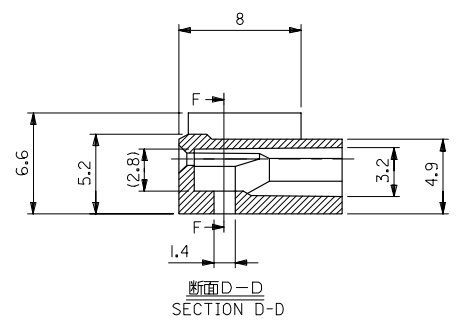
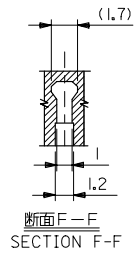
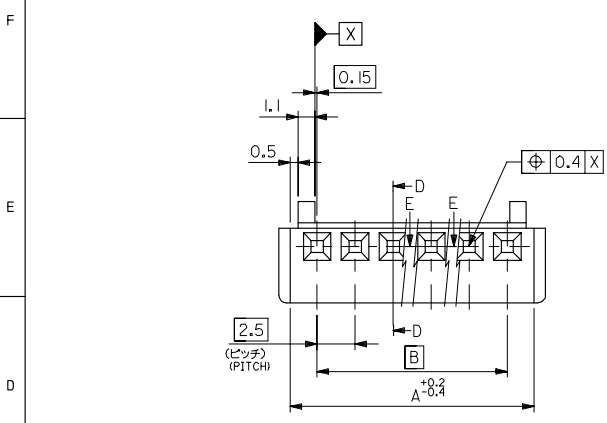
Search Parts in this Series
[5102Series](#)

Mates With
[5045](#) Vertical Header, [5046](#) Right Angle Header

Use With
[5103](#) Crimp Terminals

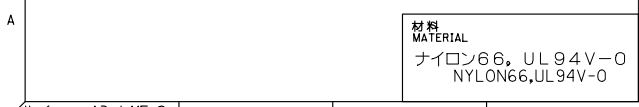
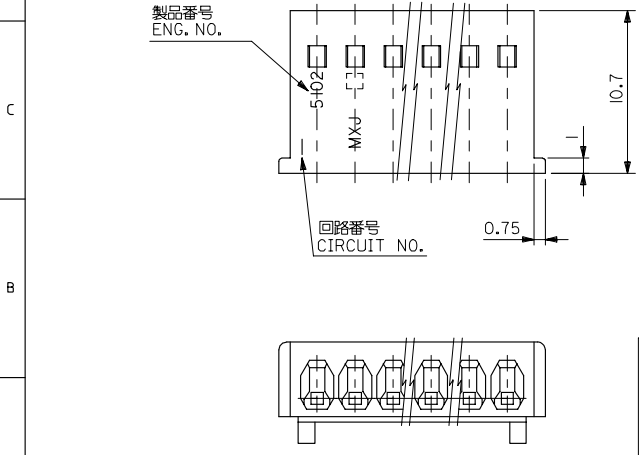
PLEASE CHECK WWW.MOLEX.COM FOR LATEST PART INFORMATION

10 9 8 7 6 5 4 3 2 1



| | 47.5 | 51 | 22-01-1204 | 5102-20 | 20 |
|--|------|------|------------|----------|--------------|
| | 45 | 48.5 | ▲ -1194 | ▲ -19 | 19 |
| | 42.5 | 46 | -1184 | -18 | 18 |
| | 40 | 43.5 | -1174 | -17 | 17 |
| | 37.5 | 41 | -1164 | -16 | 16 |
| | 35 | 38.5 | -1154 | -15 | 15 |
| | 32.5 | 36 | -1144 | -14 | 14 |
| | 30 | 33.5 | -1134 | -13 | 13 |
| | 27.5 | 31 | -1124 | -12 | 12 |
| | 25 | 28.5 | -1114 | -11 | 11 |
| | 22.5 | 26 | -1104 | -10 | 10 |
| | 20 | 23.5 | -1094 | -09 | 9 |
| | 17.5 | 21 | -1084 | -08 | 8 |
| | 15 | 18.5 | -1074 | -07 | 7 |
| | 12.5 | 16 | -1064 | -06 | 6 |
| | 10 | 13.5 | -1054 | -05 | 5 |
| | 7.5 | 11 | -1044 | -04 | 4 |
| | 5 | 8.5 | ▼ -1034 | ▼ -03 | 3 |
| | 2.5 | 6 | 22-01-1024 | 5102-02 | 2 |
| | B | A | EDP. NO. | ENG. NO. | NO. OF EXTS. |

注記
 使用ターミナル: ENG. NO. 5103*
 APPLICABLE TERMINAL: ENG. NO. 5103*



材料 MATERIAL
 ナイロン66, UL94V-0
 NYLON66, UL94V-0

| | | | | | |
|--|--|----------------------------|---|-----------------------------|------------------------|
| REVISED EC NO. J2006-347 DRW:KSAI1001 CHK:MT/ANKA APPR:NIKI/TA 2006/07/31 2006/08/04 2006/08/07 | GENERAL TOLERANCES (UNLESS SPECIFIED) | DIMENSION STYLE MM ONLY | SCALE 4:1 | DESIGN UNITS METRIC | THIRD ANGLE PROJECTION |
| | 10 UNDER ±0.2 | DRAWN BY H. IJIMA | DATE 1996/07/05 | TITLE MINI SPOX HSG | |
| | 10 OVER 30 UNDER ±0.25 | CHECKED BY M. FUKUSHIMA | DATE 1996/07/05 | MOLEX INCORPORATED | |
| | 30 OVER ±0.3 | APPROVED BY M. ENOMOTO | DATE 1996/07/05 | DOCUMENT NO. SD-5102-001 | SHEET NO. 1 OF 1 |
| ANGULAR ±3 ° | DRAFT WHERE APPLICABLE MUST REMAIN WITHIN DIMENSIONS | SEE CHART | THIS DRAWING CONTAINS INFORMATION THAT IS PROPRIETARY TO MOLEX INCORPORATED AND SHOULD NOT BE USED WITHOUT WRITTEN PERMISSION | | |