

PLEASE CHECK WWW.MOLEX.COM FOR LATEST PART INFORMATION

Part Number: [0887388400](#)
Status: **Active**
Overview: [usb](#)
Description: Universal Serial Bus (USB) Shielded I/O Cable Assembly: A-to-Pigtail Sub-Channel, 5.0m (16.40') Length

Documents:

[3D Model](#) [RoHS Certificate of Compliance \(PDF\)](#)
[Drawing \(PDF\)](#)

General

Product Family	Cable Assemblies
Series	88740
Comments	Sub-Channel
Connector to Connector	USB Type A-to-Pigtail
Overview	usb
Product Name	USB

Physical

Cable Length	5.0m (16.40')
Circuits (Loaded)	4
Gender	Male
Lock to Mating Part	Yes
Packaging Type	Bag
Pitch - Mating Interface (in)	0.079 In, 0.098 In
Pitch - Mating Interface (mm)	2.00 mm, 2.50 mm
Single Ended	Yes
Wire Insulation Diameter	N/A
Wire Size AWG	N/A
Wire/Cable Type	N/A

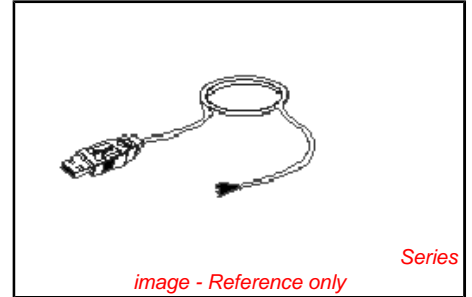
Electrical

Current - Maximum per Contact	1A
Shielded	Yes

Material Info

Reference - Drawing Numbers

Sales Drawing	SD-88738-001
---------------	--------------



EU RoHS
ELV and RoHS
Compliant
REACH SVHC
Not Reviewed
Halogen-Free
Status
Not Reviewed

China RoHS



Need more information on product environmental compliance?

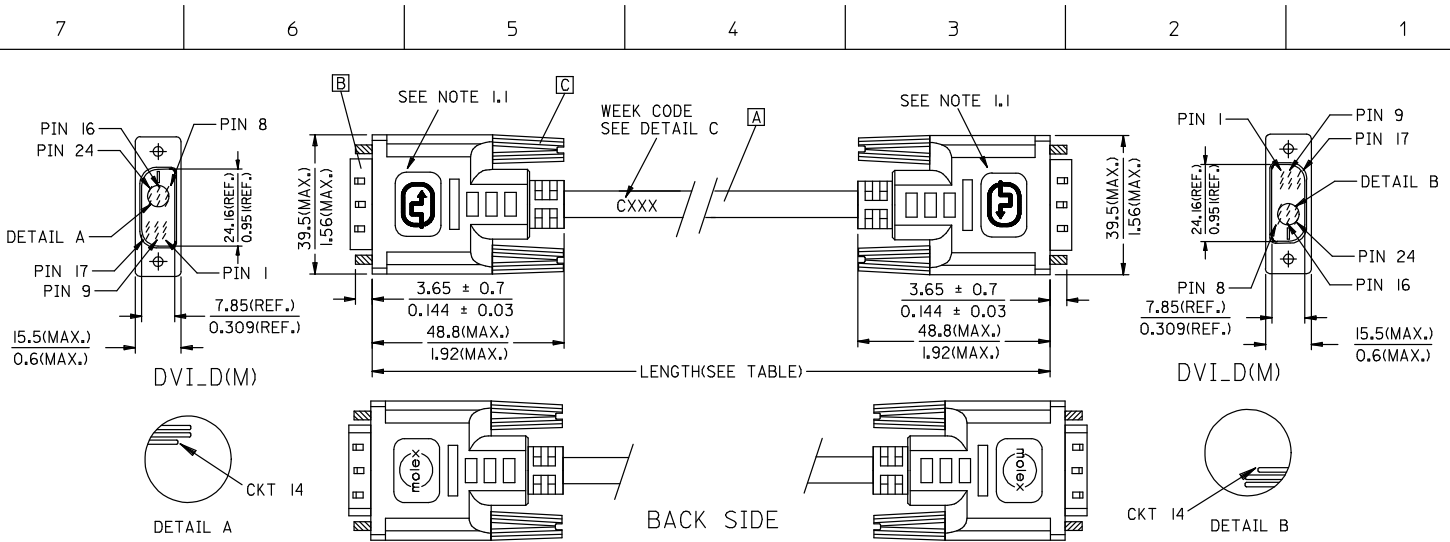
Email productcompliance@molex.com
 For a multiple part number RoHS Certificate of Compliance, [click here](#)

Please visit the [Contact Us](#) section for any non-product compliance questions.

Search Parts in this Series
[88740Series](#)

Mates With
 Universal Serial Bus (USB) Type A Receptacle [67329](#) , [67230](#) , [89485](#)

PLEASE CHECK WWW.MOLEX.COM FOR LATEST PART INFORMATION



CXXX
 WEEK NO. FOR YEAR.
 YEAR NO.
 C FOR MOLEX CHINA
 DETAIL C

8874I-802I	DVI_D-DVI_D SINGLE LINK CABLE 5M PARCHMENT WHT	5000 ± 150 196.9 ± 5.9	PARCHMENT WHITE	887808287
8874I-801I	DVI_D-DVI_D SINGLE LINK CABLE 3M PARCHMENT WHT	3000 ± 80 118.1 ± 3.1	PARCHMENT WHITE	887808287
8874I-800I	DVI_D-DVI_D SINGLE LINK CABLE 2M PARCHMENT WHT	2000 ± 60 78.7 ± 2.4	PARCHMENT WHITE	887808287
8874I-8020	DVI_D-DVI_D SINGLE LINK CABLE 5M BLK	5000 ± 150 196.9 ± 5.9	BLACK	887808276
8874I-8010	DVI_D-DVI_D SINGLE LINK CABLE 3M BLK	3000 ± 80 118.1 ± 3.1	BLACK	887808276
8874I-8000	DVI_D-DVI_D SINGLE LINK CABLE 2M BLK	2000 ± 60 78.7 ± 2.4	BLACK	887808276
MX P/N	DESCRIPTION	LENGTH	CABLE COLOR	CABLE P/N

ENTER DESCRIPTION EC NO: DG2006-0186 DRW: PDAI CHKD: CHYK APPR: TIAN 2006/03/09 2006/03/09 2006/03/10 REV	QUALITY SYMBOLS	GENERAL TOLERANCES (UNLESS SPECIFIED)	DIMENSION STYLE	SCALE	DESIGN UNITS	THIRD ANGLE PROJECTION																		
	▽=0 ▽=0	<table border="1"> <thead> <tr> <th></th> <th>mm</th> <th>INCH</th> </tr> </thead> <tbody> <tr> <td>4 PLACES</td> <td>± ---</td> <td>± ---</td> </tr> <tr> <td>3 PLACES</td> <td>± ---</td> <td>± ---</td> </tr> <tr> <td>2 PLACES</td> <td>± ---</td> <td>± ---</td> </tr> <tr> <td>1 PLACE</td> <td>± ---</td> <td>± ---</td> </tr> <tr> <td>ANGULAR</td> <td colspan="2">± ---°</td> </tr> </tbody> </table>		mm	INCH	4 PLACES	± ---	± ---	3 PLACES	± ---	± ---	2 PLACES	± ---	± ---	1 PLACE	± ---	± ---	ANGULAR	± ---°		MM/IN	---	METRIC	
		mm	INCH																					
	4 PLACES	± ---	± ---																					
3 PLACES	± ---	± ---																						
2 PLACES	± ---	± ---																						
1 PLACE	± ---	± ---																						
ANGULAR	± ---°																							
DESCRIPTION	DRAFT WHERE APPLICABLE MUST REMAIN WITHIN DIMENSIONS	DRAWN BY: PDAI CHECKED BY: ZXDENG APPROVED BY: BORON DATE: 2006/03/07	TITLE: DVI_D-DVI_D S.LINK CBL MATERIAL NO.: SEE TABLE DOCUMENT NO.: SD-88741-001	MOLEX INCORPORATED SHEET NO.: 1 OF 2																				

tb_frame_A4_P_ME_T
 Rev. D 2004/04/02

6 5 4 3 2 1

7 6 5 4 3 2 1

NOTE: 1. OVERMOLD SPECIFICATION

- 1.1 DVI BOOT MOLDED WITH SNOW WHITE PVC RESIN P/N IS 887800076.
- 1.2 UL94V-0, COLOR: MAD432
- 1.3 HARDNESS (DUROMETER): SHORE A 90-95

2. MECHANICAL SPECIFICATION

- 2.1 CABLE SHOULD STAND THE PULL FORCE 89-111N FOR 30 SECONDS WITH NO VISIBLE TERMINATION DAMAGE.
- 2.2 CABLE SHOULD PASS THE FLEX TEST IN 100 CYCLES AT EACH OF PLANES, PER EIA 364-41, CONDITION 1.

3. CABLE ELECTRICAL SPECIFICATION

- 3.1 DIELECTRIC STRENGTH: 300VDC FOR 10mS.
- 3.2 INSULATION RESISTANCE: 20 MEGA Ohms
- 3.3 DIFFERENTIAL LINES CHARACTERISTIC IMPEDANCE: 100±7 Ohms@TDR.

4. DVI CONNECTOR SPECIFICATION

- 4.1 REFER TO PRODUCT SPEC. PS74320-0001.
- 4.2 CONTACT PLATING: AU FLASH.

5. SHORTCIRCUIT AMONG DRAIN WIRES IS ACCEPTABLE.

6. THIS PRODUCT MUST MEET MX RoHS COMPLIANCE.

7. CONNECTION DIAGRAM

SHIELD	SHIELD	GROUND
PIN 24	PIN 24	TMDS CLOCK-
PIN 23	PIN 23	TMDS CLOCK+
PIN 22	PIN 22	TMDS CLOCK SHIELD
PIN 19	PIN 19	TMDS DATA 0 SHIELD
PIN 18	PIN 18	TMDS DATA 0+
PIN 17	PIN 17	TMDS DATA 0-
PIN 16	PIN 16	HOT PLUG DETECT
PIN 15	PIN 15	GROUND(+5V & HV SYNC.)
PIN 14	PIN 14	POWER +5V
PIN 11	PIN 11	TMDS DATA 1 SHIELD
PIN 10	PIN 10	TMDS DATA 1+
PIN 9	PIN 9	TMDS DATA 1-
PIN 7	PIN 7	DDC DATA
PIN 6	PIN 6	DDC CLOCK
PIN 3	PIN 3	TMDS DATA 2 SHIELD
PIN 2	PIN 2	TMDS DATA 2+
PIN 1	PIN 1	TMDS DATA 2-
DVI_D	DVI_D	CABLE FUNCTION

8. MATERIAL LIST

ITEM	DESCRIPTION
C	DVI THUMB SCREW 887806077
B	DVI_D SINGLE CHANNEL G/F CONNECTOR 743230101
A	DVI SINGLE LINK CABLE (SEE TABLE)

ENTER DESCRIPTION EC NO: DG2006-0186 DRW: PDAI 2006/03/09 CHKD: 2006/03/09 APPR: TIAN 2006/03/10 REV	QUALITY SYMBOLS	GENERAL TOLERANCES (UNLESS SPECIFIED)		DIMENSION STYLE MM/IN		SCALE ---	DESIGN UNITS METRIC	THIRD ANGLE PROJECTION
	▽=0	mm	INCH	DRAWN BY	DATE	TITLE		
	▽=0	4 PLACES ± ---	± ---	PDAI	2006/03/07	DVI_D-DVI_D S.LINK CBL		
		3 PLACES ± ---	± ---	CHECKED BY	DATE			
	2 PLACES ± ---	± ---	TEDDY	2006/03/07				
	1 PLACE ± ---	± ---	APPROVED BY	DATE				
	ANGULAR ± ---°			BORON	2006/03/07	MOLEX MOLEX INCORPORATED		
DRAFT WHERE APPLICABLE MUST REMAIN WITHIN DIMENSIONS			MATERIAL NO. SEE TABLE		DOCUMENT NO. SD-88741-001		SHEET NO. 2 OF 2	
			SIZE A4		THIS DRAWING CONTAINS INFORMATION THAT IS PROPRIETARY TO MOLEX INCORPORATED AND SHOULD NOT BE USED WITHOUT WRITTEN PERMISSION			

tb_frame_A4_P_ME_T
Rev. D 2004/04/02

6 5 4 3 2 1