

PLEASE CHECK WWW.MOLEX.COM FOR LATEST PART INFORMATION

Part Number: [0014441619](#)
Status: **Active**
Overview: [cgrid_sl_products](#)
Description: 2.54mm (.100") Pitch SL™ Insulation Displacement Connector Assembly, Male, Single Row, Version D, Back Ribs, for Wire Size 26, 0.38µm (15µ") Gold (Au), 19 Circuits

Documents:

[3D Model](#) [Product Specification PS-70400 \(PDF\)](#)
[Drawing \(PDF\)](#) [RoHS Certificate of Compliance \(PDF\)](#)

Agency Certification

CSA LR19980
 UL E29179

General

Product Family Ribbon Cable / Wire Trap Connectors
 Series [70475](#)
 Comments Terminals Preloaded
 Component Type Housing
 Glow-Wire Compliant No
 Overview [cgrid_sl_products](#)
 Product Name SL™

Physical

Circuits (Loaded) 19
 Durability (mating cycles max) 50
 Entry Angle Vertical
 Flammability 94V-0
 Lock to Mating Part None
 Number of Rows 1
 PCB Retention None
 Packaging Type Tube
 Pitch - Mating Interface (in) 0.100 In
 Pitch - Mating Interface (mm) 2.54 mm
 Polarized to Mating Part No
 Stackable Yes
 Surface Mount Compatible (SMC) N/A
 Temperature Range - Operating -40°C to +105°C
 Wire Insulation Diameter 1.35mm (.053") max.
 Wire Size AWG 26
 Wire/Cable Type Discrete Wire, Ribbon Cable

Electrical

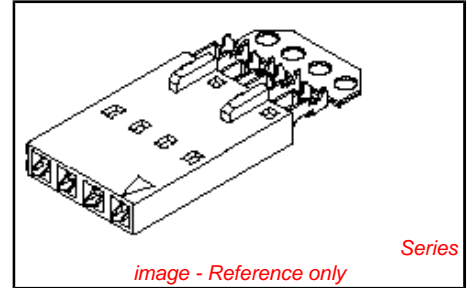
Current - Maximum per Contact 1.8A
 Voltage - Maximum 250V

Material Info

Old Part Number 70475-0788

Reference - Drawing Numbers

Product Specification PS-70400



EU RoHS

ELV and RoHS Compliant
REACH SVHC Not Reviewed
Halogen-Free Status Not Reviewed

China RoHS



Need more information on product environmental compliance?

Email productcompliance@molex.com
 For a multiple part number RoHS Certificate of Compliance, [click here](#)

Please visit the [Contact Us](#) section for any non-product compliance questions.

Search Parts in this Series

[70475Series](#)

Mates With

[70004](#) Interim Clip (Single Row), [70013](#) Interim Clip (Dual Row)

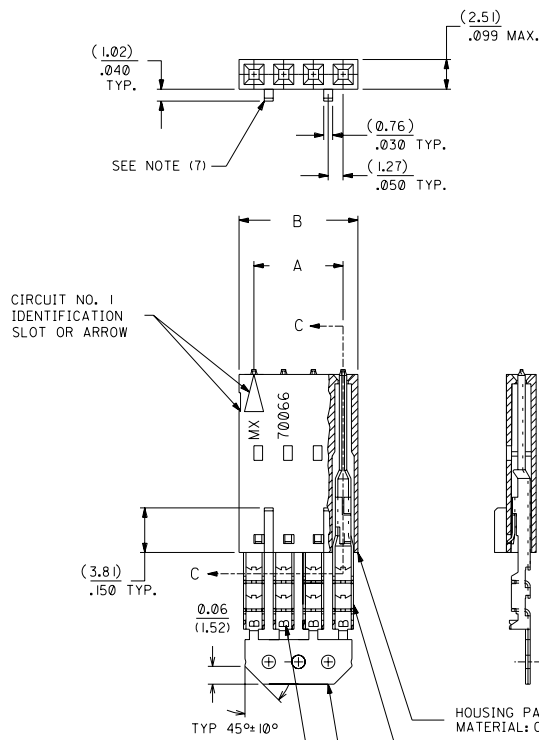
Use With

[7307](#) Tinned 28AWG, [7767](#) Topcoat 28AWG, [24241](#) Tinned 26AWG, [8996](#) Topcoat 26AWG, [24226](#) Tinned 24AWG, [8997](#) Topcoat 24AWG, [24369](#) High Flex 26AWG, [24389](#) High Flex 24AWG

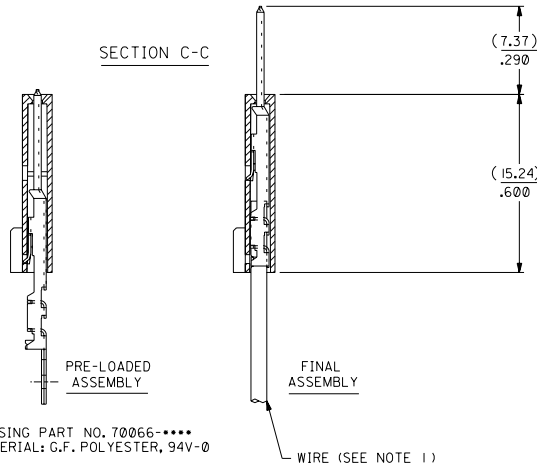
PLEASE CHECK WWW.MOLEX.COM FOR LATEST PART INFORMATION

OPTION D

- NOTES:**
- TO BE USED WITH (26) AWG. STRANDED WIRE WITH (1.35) / (.053) DIA. MAX. INSULATION.
 - SEE CHART FOR CIRCUIT SIZES.
 - STANDARD PACKAGING PER PK-70873-0001, OPTIONAL PACKAGING MAY BE AVAILABLE, REQUEST DWG. PK-70475.
 - PARTS STACKABLE END TO END ON (2.54) / (.100) CENTERS.
 - REFER TO PRODUCT SPECIFICATION; PS-70475.
 - SEE DWG. SDA-70475-**** (SHT.3) FOR OPTIONAL HOUSING DETAILS.
 - 4 CIRCUIT SHOWN, 3 - 25 CKT'S. HAVE (2) RIBS.
 - TO MATE WITH MOLEX PART NO'S.: 70018-****, 70022-****, 70104-****.
 - 2 CIRCUIT ASSEMBLIES SUPPLIED AS GROUPED PAIRS.



SECTION C-C



I.D. SLOT CODE TO WIRE GAUGE CHART	
I.D. SLOT CODE	WIRE GAUGE
B	26 AWG.

PLATING CODE (STRIPE ON CARRIER STRIP)	
PLATING	COLOR
15 GOLD	YELLOW

15 GOLD - .000015 MINIMUM GOLD IN SELECT AREA WITH .000075 MINIMUM TIN IN SELECT AREA OVER .000050 MINIMUM NICKEL OVER-ALL.

*THE PRIMARY SHIPPING CARTON WILL BE LABELED *COMPLIANT TO ROHS DIRECTIVE 2002/95/EC AND ELV ANNEX II OF DIRECTIVE 2000/53/EC*. CARTONS WITHOUT THIS LABEL MAY CONTAIN PRODUCT WITH LEAD.

CKT. SIZE	DIMENSIONS (INCH)		EDP. NO.	ENG. NO.
	A	B		
2	(2.54) (1.00)	(5.05) (1.99)	14-44-1602	A-70475-0771
3	(5.08) (2.00)	(7.59) (2.99)	14-44-1603	A-70475-0772
4	(7.62) (3.00)	(10.13) (3.99)	14-44-1604	A-70475-0773
5	(10.16) (4.00)	(12.67) (4.99)	14-44-1605	A-70475-0774
6	(12.70) (5.00)	(15.21) (5.99)	14-44-1606	A-70475-0775
7	(15.24) (6.00)	(17.75) (6.99)	14-44-1607	A-70475-0776
8	(17.78) (7.00)	(20.29) (7.99)	14-44-1608	A-70475-0777
9	(20.32) (8.00)	(22.83) (8.99)	14-44-1609	A-70475-0778
10	(22.86) (9.00)	(25.37) (9.99)	14-44-1610	A-70475-0779
11	(25.54) (1.000)	(27.91) (1.099)	14-44-1611	A-70475-0780
12	(27.94) (1.100)	(30.45) (1.199)	14-44-1612	A-70475-0781
13	(30.48) (1.200)	(32.99) (1.299)	14-44-1613	A-70475-0782
14	(33.02) (1.300)	(35.53) (1.399)	14-44-1614	A-70475-0783
15	(35.56) (1.400)	(38.07) (1.499)	14-44-1615	A-70475-0784
16	(38.01) (1.500)	(40.61) (1.599)	14-44-1616	A-70475-0785
17	(40.64) (1.600)	(43.15) (1.699)	14-44-1617	A-70475-0786
18	(43.18) (1.700)	(45.69) (1.799)	14-44-1618	A-70475-0787
19	(45.72) (1.800)	(48.23) (1.899)	14-44-1619	A-70475-0788
20	(48.26) (1.900)	(50.77) (1.999)	14-44-1620	A-70475-0789
21	(50.80) (2.000)	(53.31) (2.099)	14-44-1621	A-70475-0790
22	(53.34) (2.100)	(55.85) (2.199)	14-44-1622	A-70475-0791
23	(55.88) (2.200)	(58.39) (2.299)	14-44-1623	A-70475-0792
24	(58.42) (2.300)	(60.93) (2.399)	14-44-1624	A-70475-0793
25	(60.96) (2.400)	(63.47) (2.499)	14-44-1625	A-70475-0794

I.D. SLOT CODE TO WIRE GAUGE CHART	
I.D. SLOT CODE	WIRE GAUGE
B	26 AWG.

PLATING CODE (STRIPE ON CARRIER STRIP)	
PLATING	COLOR
15 GOLD	YELLOW

REVISIONS LTR. REVISIONS		REVISIONS LTR. REVISIONS		DIMENSIONS SHOWN (METRIC) INCH UNLESS OTHERWISE SPECIFIED TOLERANCES ANGULAR ± 1/2°		MFG, SHL, REV. REVISE ONLY ON CAD SYSTEM	
E REVISOR PER ECR NO. UB2124 10-17-88 MGB		D REVISOR PER ECR *UB1370 5/20/88 MJM		3 PLACE ± .010 --- 2 PLACE ± .014 ± 0.25 1 PLACE --- ± 0.35		ASSEMBLY, SL CONNECTOR (SINGLE ROW - (2.54) / (.100) GRID)	
F LEAD FREE UCP2004-1769 RWHITE 04/03/24		C REDRAWN ON CAD ECR * 9842 5/23/86 W.Z.		DRAFT WHERE APPLICABLE MUST REMAIN WITHIN DIMENSIONS		MOLEX INCORPORATED SHEET NO. 1 DATE 10/13/84 SEE CHART SDA-70475-0771-0794	
E1 ADD CARRIER CHAMF ECN *UDT1998-0280 05/20/98 LMCGRATH		LTR. REVISIONS		DRG. NO. 68532 U.S.A.		FILE NAME 5704750X5 NO. DRG. CONTACT INFORMATION SHALL BE PROVIDED TO MOLEX INC. AND SHOULD NOT BE USED WITHOUT WRITTEN PERMISSION.	