

PLEASE CHECK WWW.MOLEX.COM FOR LATEST PART INFORMATION

Part Number: [0009017224](#)
Status: **Active**
Overview: [edge_card_connectors](#)
Description: 3.96mm (.156") Pitch KK® Crimp Housing, Edge Card Connector, Single-Sided, Surface Mount, Polarized, With Flange, 22 Circuits, Rib between 5 & 6, 11 & 12, 16 & 17

Documents:

[3D Model](#) [Packaging Specification \(PDF\)](#)
[Drawing \(PDF\)](#) [RoHS Certificate of Compliance \(PDF\)](#)

Agency Certification

UL E29179

General

Product Family Edge Card Connectors
 Series [2574](#)
 Component Type Edgecard to Wire
 Overview [edge_card_connectors](#)
 Product Name Edge Card, KK®

Physical

Circuits (Loaded) 22
 Circuits (maximum) 22
 Circuits Detail All Signal
 Color - Resin Natural
 Durability (mating cycles max) 25
 Entry Angle Vertical (Top Entry)
 Flammability 94V-2
 Keying to Mating Part Yes
 Material - Plating Mating n/a
 Material - Resin Nylon
 PCB Retention None
 PCB Thickness Recommended (in) 0.062 In
 PCB Thickness Recommended (mm) 1.60 mm
 Packaging Type Bag
 Panel Mount With Flange
 Pitch - Mating Interface (in) 0.156 In
 Pitch - Mating Interface (mm) 3.96 mm
 Polarized to Mating Part Yes
 Temperature Range - Operating 0°C to +75°C
 Termination Interface: Style N/A

Electrical

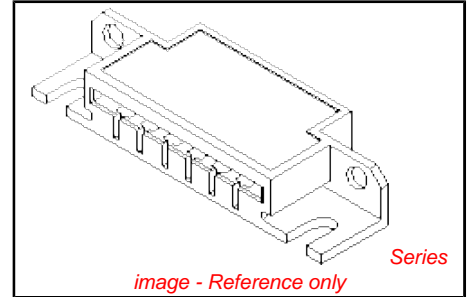
Current - Maximum per Contact 4.25A, 4.5A, 4.75A, 4A, 5A
 Voltage - Maximum 250V

Material Info

Old Part Number 2574-22B12

Reference - Drawing Numbers

[Packaging Specification](#) PK-2574-001
[Sales Drawing](#) SD-2574



<p>EU RoHS ELV and RoHS Compliant REACH SVHC Contains SVHC: No Halogen-Free Status Not Reviewed</p>	<p>China RoHS</p>
--	--------------------------

Need more information on product environmental compliance?

Email productcompliance@molex.com
 For a multiple part number RoHS Certificate of Compliance, [click here](#)

Please visit the [Contact Us](#) section for any non-product compliance questions.

Search Parts in this Series
[2574Series](#)

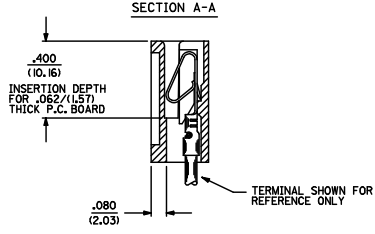
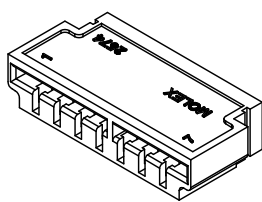
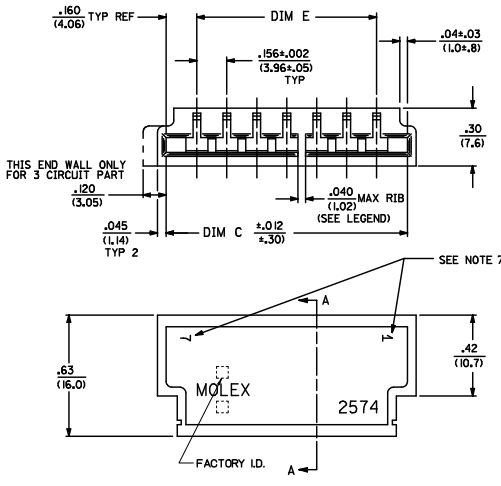
Mates With
 PCB, 1.6mm (0.62") max. thickness

Use With
[2878](#) Terminals, [2478](#) Terminals, [2578](#) Terminals, Bifurcated

PLEASE CHECK WWW.MOLEX.COM FOR LATEST PART INFORMATION

NOTES

1. MATERIAL: NYLON 6/6, 94V-2.
2. FINISH: SEE CRIMP TERMINAL DRAWING.
3. THIS PRODUCT CONFORMS TO PRODUCT SPECIFICATION PS-08-50.
4. PACKAGING: BULK PER PK-2574-001
5. CONNECTOR TO BE USED WITH CRIMP TERMINALS:
 2478 → 18-24 GAGE WIRE; .110(.279) MAX. INSULATION DIAMETER.
 2578 → 22-26 GAGE WIRE; .095(.165) MAX. INSULATION DIAMETER.
6. DIMENSIONS GIVEN ACROSS CENTERLINES ARE SYMMETRICAL ABOUT THOSE CENTERLINES WITHIN ONE HALF THE TOTAL TOLERANCE.
7. PARTS LESS THAN 7 CIRCUITS ARE TO INDICATE ONLY CIRCUIT NO. 1. ALL OTHERS ARE TO IDENTIFY BOTH THE FIRST AND LAST CIRCUITS.
8. PART CONFORMS TO CLASS B REQUIREMENTS OF COSMETIC SPECIFICATION PS-45499-002



2574 - N * * *

NO. OF CIRCUITS

COLOR CODE
 BL=BLANK=NATURAL
 BK=BLACK

OPTION CODE

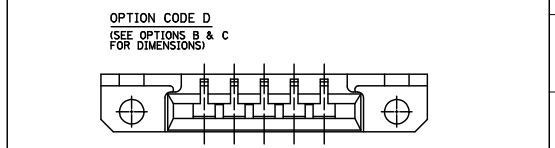
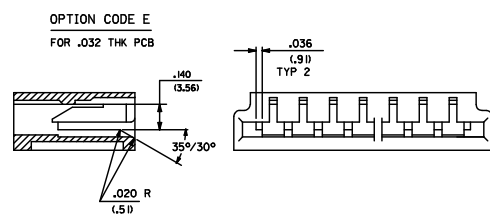
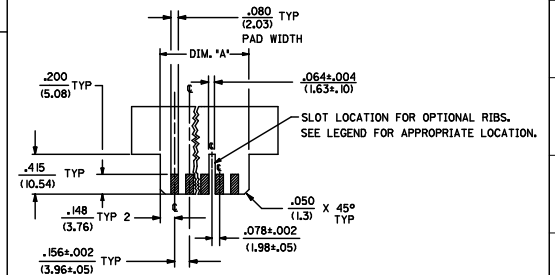
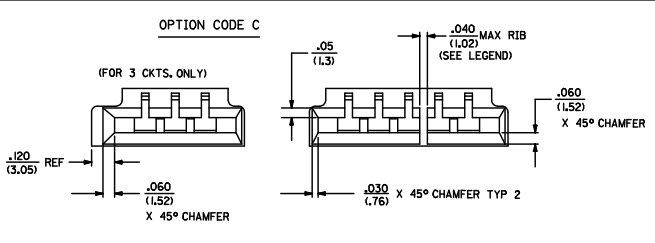
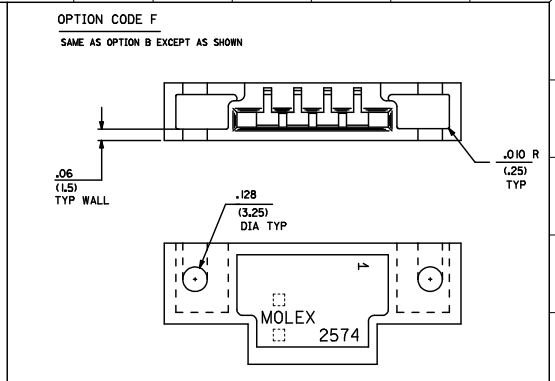
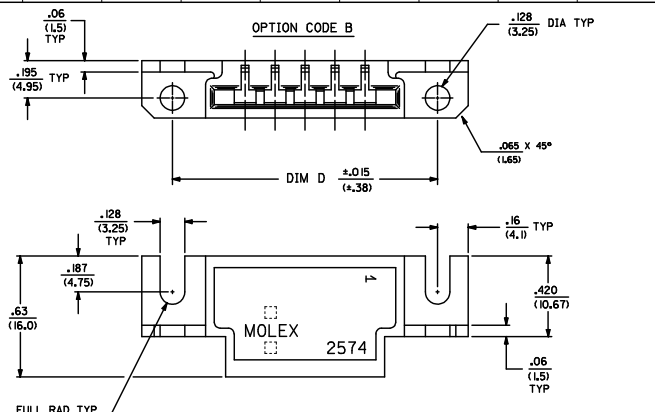
CODE	MOUNTING EARS	CHAMFERED SLOT	PCB THK	MOUNTING HOLES
A	NO	NO	.062	NO
B	YES	NO	.062	NO
C	NO	YES	.062	NO
D	YES	YES	.062	NO
E	NO	NO	.032	NO
F	YES	NO	.062	YES

RIB LOCATION CODE (BETWEEN CKTS)

- 1 = NONE
- 2 = 2-3
- 3 = 3-4
- 4 = 5-6
- 5 = 3-4, 5-6
- 6 = 4-5, 7-8
- 7 = 5-6, 8-9
- 8 = 5-6, 10-11
- 9 = 4-5, 7-8, 11-12
- 10 = 5-6, 10-11, 14-15
- 11 = 5-6, 10-11, 15-16
- 12 = 5-6, 11-12, 16-17
- 13 = 5-6, 11-12, 17-18
- 14 = 4-5, 7-8, 11-12, 15-16
- 15 = 4-5, 8-9, 12-13, 16-17, 20-21
- 16 = 5-6, 11-12, 18-19

ADD PART NUMBERS EDC: P. 2009-0285 C10 CHIKOSU/SEK APPROV: SHT 2008/12/28 2008/12/28 2009/07/05	QUALITY SYMBOLS 0 0	GENERAL TOLERANCES (UNLESS SPECIFIED) 4 PLACES ± .010 3 PLACES ± .015 2 PLACES ± 0.25 1 PLACE ± 0.36 ANGULAR ± 1/2°	DIMENSION STYLE IN/MM DRAWN BY: PEREZ-ARGUET 1988/03/02 CHECKED BY: PATEL 1988/03/02 APPROVED BY: LENZ 1988/03/02	SCALE: 4:1 DESIGN UNITS: INCH THIRD ANGLE PROJECTION	TITLE: EDGE CARD CONNECTOR .156(.396) CENTERS CRIMP TYPE-2574 SERIES MOLEX INCORPORATED	SHEET NO. 1 OF 3
	DRAFT WHERE APPLICABLE MUST REMAIN WITHIN DIMENSIONS		MATERIAL NO. SEE CHART	DOCUMENT NO. SD-2574	MOLEX INCORPORATED	1 OF 3
	THIS DRAWING CONTAINS INFORMATION THAT IS PROPRIETARY TO MOLEX INCORPORATED AND SHOULD NOT BE USED WITHOUT WRITTEN PERMISSION					
	Rev. E 2006/04/15					

NO. OF CKT'S	DIM. C	DIM. D	DIM. E	DIM. A
3	.632 (16.05)	1.143 (29.03)	.312±.002 (7.92±.005)	.618 (15.70)
4	.788 (20.02)	1.224 (31.09)	.468±.002 (11.89±.05)	.774 (19.66)
5	.944 (23.98)	1.380 (35.05)	.624±.003 (15.85±.08)	.922 (23.42)
6	1.100 (27.94)	1.536 (39.01)	.780±.003 (19.81±.08)	1.078 (27.38)
7	1.256 (31.90)	1.692 (42.98)	.936±.003 (23.77±.08)	1.232 (31.29)
8	1.412 (35.86)	1.848 (46.94)	1.092±.004 (27.74±.10)	1.388 (35.26)
9	1.568 (39.83)	2.004 (50.90)	1.248±.004 (31.70±.10)	1.544 (39.22)
10	1.724 (43.79)	2.160 (54.86)	1.404±.006 (35.66±.15)	1.700 (43.18)
11	1.880 (47.75)	2.316 (58.83)	1.560±.006 (39.62±.15)	1.854 (47.09)
12	2.036 (51.71)	2.472 (62.79)	1.716±.006 (43.59±.15)	2.010 (51.05)
13	2.192 (55.68)	2.628 (66.75)	1.872±.006 (47.55±.15)	2.164 (54.97)
14	2.348 (59.64)	2.784 (70.71)	2.028±.007 (51.51±.18)	2.318 (58.88)
15	2.504 (63.60)	2.940 (74.68)	2.184±.007 (55.47±.18)	2.474 (62.84)
16	2.660 (67.56)	3.096 (78.64)	2.340±.007 (59.44±.18)	2.631 (66.83)
17	2.816 (71.53)	3.252 (82.60)	2.496±.008 (63.40±.20)	2.784 (70.71)
18	2.972 (75.49)	3.408 (86.56)	2.652±.009 (67.36±.23)	2.954 (75.03)
19	3.128 (79.45)	3.564 (90.53)	2.808±.009 (71.32±.23)	3.095 (78.61)
20	3.284 (83.41)	3.720 (94.49)	2.964±.009 (75.29±.23)	3.251 (82.58)
21	3.440 (87.38)	3.876 (98.45)	3.120±.010 (79.25±.25)	3.407 (86.54)
22	3.596 (91.34)	4.032 (102.41)	3.276±.011 (83.21±.25)	3.562 (90.47)
23	3.752 (95.30)	4.188 (106.38)	3.432±.011 (87.17±.28)	3.716 (94.39)
24	3.908 (99.26)	4.344 (110.34)	3.588±.012 (91.14±.30)	3.871 (98.32)



REVISION FACTORY ID: REV. 1: 08/05/98 REV. 2: 08/01/98 REV. 3: 08/01/98 REV. 4: 08/01/98 REV. 5: 08/01/98 REV. 6: 08/01/98 REV. 7: 08/01/98 REV. 8: 08/01/98 REV. 9: 08/01/98 REV. 10: 08/01/98 REV. 11: 08/01/98 REV. 12: 08/01/98 REV. 13: 08/01/98 REV. 14: 08/01/98 REV. 15: 08/01/98 REV. 16: 08/01/98 REV. 17: 08/01/98 REV. 18: 08/01/98 REV. 19: 08/01/98 REV. 20: 08/01/98 REV. 21: 08/01/98 REV. 22: 08/01/98 REV. 23: 08/01/98 REV. 24: 08/01/98 REV. 25: 08/01/98 REV. 26: 08/01/98 REV. 27: 08/01/98 REV. 28: 08/01/98 REV. 29: 08/01/98 REV. 30: 08/01/98 REV. 31: 08/01/98 REV. 32: 08/01/98 REV. 33: 08/01/98 REV. 34: 08/01/98 REV. 35: 08/01/98 REV. 36: 08/01/98 REV. 37: 08/01/98 REV. 38: 08/01/98 REV. 39: 08/01/98 REV. 40: 08/01/98 REV. 41: 08/01/98 REV. 42: 08/01/98 REV. 43: 08/01/98 REV. 44: 08/01/98 REV. 45: 08/01/98 REV. 46: 08/01/98 REV. 47: 08/01/98 REV. 48: 08/01/98 REV. 49: 08/01/98 REV. 50: 08/01/98 REV. 51: 08/01/98 REV. 52: 08/01/98 REV. 53: 08/01/98 REV. 54: 08/01/98 REV. 55: 08/01/98 REV. 56: 08/01/98 REV. 57: 08/01/98 REV. 58: 08/01/98 REV. 59: 08/01/98 REV. 60: 08/01/98 REV. 61: 08/01/98 REV. 62: 08/01/98 REV. 63: 08/01/98 REV. 64: 08/01/98 REV. 65: 08/01/98 REV. 66: 08/01/98 REV. 67: 08/01/98 REV. 68: 08/01/98 REV. 69: 08/01/98 REV. 70: 08/01/98 REV. 71: 08/01/98 REV. 72: 08/01/98 REV. 73: 08/01/98 REV. 74: 08/01/98 REV. 75: 08/01/98 REV. 76: 08/01/98 REV. 77: 08/01/98 REV. 78: 08/01/98 REV. 79: 08/01/98 REV. 80: 08/01/98 REV. 81: 08/01/98 REV. 82: 08/01/98 REV. 83: 08/01/98 REV. 84: 08/01/98 REV. 85: 08/01/98 REV. 86: 08/01/98 REV. 87: 08/01/98 REV. 88: 08/01/98 REV. 89: 08/01/98 REV. 90: 08/01/98 REV. 91: 08/01/98 REV. 92: 08/01/98 REV. 93: 08/01/98 REV. 94: 08/01/98 REV. 95: 08/01/98 REV. 96: 08/01/98 REV. 97: 08/01/98 REV. 98: 08/01/98 REV. 99: 08/01/98 REV. 100: 08/01/98 REV. 101: 08/01/98 REV. 102: 08/01/98 REV. 103: 08/01/98 REV. 104: 08/01/98 REV. 105: 08/01/98 REV. 106: 08/01/98 REV. 107: 08/01/98 REV. 108: 08/01/98 REV. 109: 08/01/98 REV. 110: 08/01/98 REV. 111: 08/01/98 REV. 112: 08/01/98 REV. 113: 08/01/98 REV. 114: 08/01/98 REV. 115: 08/01/98 REV. 116: 08/01/98 REV. 117: 08/01/98 REV. 118: 08/01/98 REV. 119: 08/01/98 REV. 120: 08/01/98 REV. 121: 08/01/98 REV. 122: 08/01/98 REV. 123: 08/01/98 REV. 124: 08/01/98 REV. 125: 08/01/98 REV. 126: 08/01/98 REV. 127: 08/01/98 REV. 128: 08/01/98 REV. 129: 08/01/98 REV. 130: 08/01/98 REV. 131: 08/01/98 REV. 132: 08/01/98 REV. 133: 08/01/98 REV. 134: 08/01/98 REV. 135: 08/01/98 REV. 136: 08/01/98 REV. 137: 08/01/98 REV. 138: 08/01/98 REV. 139: 08/01/98 REV. 140: 08/01/98 REV. 141: 08/01/98 REV. 142: 08/01/98 REV. 143: 08/01/98 REV. 144: 08/01/98 REV. 145: 08/01/98 REV. 146: 08/01/98 REV. 147: 08/01/98 REV. 148: 08/01/98 REV. 149: 08/01/98 REV. 150: 08/01/98 REV. 151: 08/01/98 REV. 152: 08/01/98 REV. 153: 08/01/98 REV. 154: 08/01/98 REV. 155: 08/01/98 REV. 156: 08/01/98 REV. 157: 08/01/98 REV. 158: 08/01/98 REV. 159: 08/01/98 REV. 160: 08/01/98 REV. 161: 08/01/98 REV. 162: 08/01/98 REV. 163: 08/01/98 REV. 164: 08/01/98 REV. 165: 08/01/98 REV. 166: 08/01/98 REV. 167: 08/01/98 REV. 168: 08/01/98 REV. 169: 08/01/98 REV. 170: 08/01/98 REV. 171: 08/01/98 REV. 172: 08/01/98 REV. 173: 08/01/98 REV. 174: 08/01/98 REV. 175: 08/01/98 REV. 176: 08/01/98 REV. 177: 08/01/98 REV. 178: 08/01/98 REV. 179: 08/01/98 REV. 180: 08/01/98 REV. 181: 08/01/98 REV. 182: 08/01/98 REV. 183: 08/01/98 REV. 184: 08/01/98 REV. 185: 08/01/98 REV. 186: 08/01/98 REV. 187: 08/01/98 REV. 188: 08/01/98 REV. 189: 08/01/98 REV. 190: 08/01/98 REV. 191: 08/01/98 REV. 192: 08/01/98 REV. 193: 08/01/98 REV. 194: 08/01/98 REV. 195: 08/01/98 REV. 196: 08/01/98 REV. 197: 08/01/98 REV. 198: 08/01/98 REV. 199: 08/01/98 REV. 200: 08/01/98 REV. 201: 08/01/98 REV. 202: 08/01/98 REV. 203: 08/01/98 REV. 204: 08/01/98 REV. 205: 08/01/98 REV. 206: 08/01/98 REV. 207: 08/01/98 REV. 208: 08/01/98 REV. 209: 08/01/98 REV. 210: 08/01/98 REV. 211: 08/01/98 REV. 212: 08/01/98 REV. 213: 08/01/98 REV. 214: 08/01/98 REV. 215: 08/01/98 REV. 216: 08/01/98 REV. 217: 08/01/98 REV. 218: 08/01/98 REV. 219: 08/01/98 REV. 220: 08/01/98 REV. 221: 08/01/98 REV. 222: 08/01/98 REV. 223: 08/01/98 REV. 224: 08/01/98 REV. 225: 08/01/98 REV. 226: 08/01/98 REV. 227: 08/01/98 REV. 228: 08/01/98 REV. 229: 08/01/98 REV. 230: 08/01/98 REV. 231: 08/01/98 REV. 232: 08/01/98 REV. 233: 08/01/98 REV. 234: 08/01/98 REV. 235: 08/01/98 REV. 236: 08/01/98 REV. 237: 08/01/98 REV. 238: 08/01/98 REV. 239: 08/01/98 REV. 240: 08/01/98 REV. 241: 08/01/98 REV. 242: 08/01/98 REV. 243: 08/01/98 REV. 244: 08/01/98 REV. 245: 08/01/98 REV. 246: 08/01/98 REV. 247: 08/01/98 REV. 248: 08/01/98 REV. 249: 08/01/98 REV. 250: 08/01/98 REV. 251: 08/01/98 REV. 252: 08/01/98 REV. 253: 08/01/98 REV. 254: 08/01/98 REV. 255: 08/01/98 REV. 256: 08/01/98 REV. 257: 08/01/98 REV. 258: 08/01/98 REV. 259: 08/01/98 REV. 260: 08/01/98 REV. 261: 08/01/98 REV. 262: 08/01/98 REV. 263: 08/01/98 REV. 264: 08/01/98 REV. 265: 08/01/98 REV. 266: 08/01/98 REV. 267: 08/01/98 REV. 268: 08/01/98 REV. 269: 08/01/98 REV. 270: 08/01/98 REV. 271: 08/01/98 REV. 272: 08/01/98 REV. 273: 08/01/98 REV. 274: 08/01/98 REV. 275: 08/01/98 REV. 276: 08/01/98 REV. 277: 08/01/98 REV. 278: 08/01/98 REV. 279: 08/01/98 REV. 280: 08/01/98 REV. 281: 08/01/98 REV. 282: 08/01/98 REV. 283: 08/01/98 REV. 284: 08/01/98 REV. 285: 08/01/98 REV. 286: 08/01/98 REV. 287: 08/01/98 REV. 288: 08/01/98 REV. 289: 08/01/98 REV. 290: 08/01/98 REV. 291: 08/01/98 REV. 292: 08/01/98 REV. 293: 08/01/98 REV. 294: 08/01/98 REV. 295: 08/01/98 REV. 296: 08/01/98 REV. 297: 08/01/98 REV. 298: 08/01/98 REV. 299: 08/01/98 REV. 300: 08/01/98 REV. 301: 08/01/98 REV. 302: 08/01/98 REV. 303: 08/01/98 REV. 304: 08/01/98 REV. 305: 08/01/98 REV. 306: 08/01/98 REV. 307: 08/01/98 REV. 308: 08/01/98 REV. 309: 08/01/98 REV. 310: 08/01/98 REV. 311: 08/01/98 REV. 312: 08/01/98 REV. 313: 08/01/98 REV. 314: 08/01/98 REV. 315: 08/01/98 REV. 316: 08/01/98 REV. 317: 08/01/98 REV. 318: 08/01/98 REV. 319: 08/01/98 REV. 320: 08/01/98 REV. 321: 08/01/98 REV. 322: 08/01/98 REV. 323: 08/01/98 REV. 324: 08/01/98 REV. 325: 08/01/98 REV. 326: 08/01/98 REV. 327: 08/01/98 REV. 328: 08/01/98 REV. 329: 08/01/98 REV. 330: 08/01/98 REV. 331: 08/01/98 REV. 332: 08/01/98 REV. 333: 08/01/98 REV. 334: 08/01/98 REV. 335: 08/01/98 REV. 336: 08/01/98 REV. 337: 08/01/98 REV. 338: 08/01/98 REV. 339: 08/01/98 REV. 340: 08/01/98 REV. 341: 08/01/98 REV. 342: 08/01/98 REV. 343: 08/01/98 REV. 344: 08/01/98 REV. 345: 08/01/98 REV. 346: 08/01/98 REV. 347: 08/01/98 REV. 348: 08/01/98 REV. 349: 08/01/98 REV. 350: 08/01/98 REV. 351: 08/01/98 REV. 352: 08/01/98 REV. 353: 08/01/98 REV. 354: 08/01/98 REV. 355: 08/01/98 REV. 356: 08/01/98 REV. 357: 08/01/98 REV. 358: 08/01/98 REV. 359: 08/01/98 REV. 360: 08/01/98 REV. 361: 08/01/98 REV. 362: 08/01/98 REV. 363: 08/01/98 REV. 364: 08/01/98 REV. 365: 08/01/98 REV. 366: 08/01/98 REV. 367: 08/01/98 REV. 368: 08/01/98 REV. 369: 08/01/98 REV. 370: 08/01/98 REV. 371: 08/01/98 REV. 372: 08/01/98 REV. 373: 08/01/98 REV. 374: 08/01/98 REV. 375: 08/01/98 REV. 376: 08/01/98 REV. 377: 08/01/98 REV. 378: 08/01/98 REV. 379: 08/01/98 REV. 380: 08/01/98 REV. 381: 08/01/98 REV. 382: 08/01/98 REV. 383: 08/01/98 REV. 384: 08/01/98 REV. 385: 08/01/98 REV. 386: 08/01/98 REV. 387: 08/01/98 REV. 388: 08/01/98 REV. 389: 08/01/98 REV. 390: 08/01/98 REV. 391: 08/01/98 REV. 392: 08/01/98 REV. 393: 08/01/98 REV. 394: 08/01/98 REV. 395: 08/01/98 REV. 396: 08/01/98 REV. 397: 08/01/98 REV. 398: 08/01/98 REV. 399: 08/01/98 REV. 400: 08/01/98 REV. 401: 08/01/98 REV. 402: 08/01/98 REV. 403: 08/01/98 REV. 404: 08/01/98 REV. 405: 08/01/98 REV. 406: 08/01/98 REV. 407: 08/01/98 REV. 408: 08/01/98 REV. 409: 08/01/98 REV. 410: 08/01/98 REV. 411: 08/01/98 REV. 412: 08/01/98 REV. 413: 08/01/98 REV. 414: 08/01/98 REV. 415: 08/01/98 REV. 416: 08/01/98 REV. 417: 08/01/98 REV. 418: 08/01/98 REV. 419: 08/01/98 REV. 420: 08/01/98 REV. 421: 08/01/98 REV. 422: 08/01/98 REV. 423: 08/01/98 REV. 424: 08/01/98 REV. 425: 08/01/98 REV. 426: 08/01/98 REV. 427: 08/01/98 REV. 428: 08/01/98 REV. 429: 08/01/98 REV. 430: 08/01/98 REV. 431: 08/01/98 REV. 432: 08/01/98 REV. 433: 08/01/98 REV. 434: 08/01/98 REV. 435: 08/01/98 REV. 436: 08/01/98 REV. 437: 08/01/98 REV. 438: 08/01/98 REV. 439: 08/01/98 REV. 440: 08/01/98 REV. 441: 08/01/98 REV. 442: 08/01/98 REV. 443: 08/01/98 REV. 444: 08/01/98 REV. 445: 08/01/98 REV. 446: 08/01/98 REV. 447: 08/01/98 REV. 448: 08/01/98 REV. 449: 08/01/98 REV. 450: 08/01/98 REV. 451: 08/01/98 REV. 452: 08/01/98 REV. 453: 08/01/98 REV. 454: 08/01/98 REV. 455: 08/01/98 REV. 456: 08/01/98 REV. 457: 08/01/98 REV. 458: 08/01/98 REV. 459: 08/01/98 REV. 460: 08/01/98 REV. 461: 08/01/98 REV. 462: 08/01/98 REV. 463: 08/01/98 REV. 464: 08/01/98 REV. 465: 08/01/98 REV. 466: 08/01/98 REV. 467: 08/01/98 REV. 468: 08/01/98 REV. 469: 08/01/98 REV. 470: 08/01/98 REV. 471: 08/01/98 REV. 472: 08/01/98 REV. 473: 08/01/98 REV. 474: 08/0
--

2574-NA*		2574-NB*		2574-NC*		2574-ND*		2574-NE*		2574-NF*	
PART NO.	ENG. NO. (SUFFIX ONLY)	PART NO.	ENG. NO. (SUFFIX ONLY)	PART NO.	ENG. NO. (SUFFIX ONLY)	PART NO.	ENG. NO. (SUFFIX ONLY)	PART NO.	ENG. NO. (SUFFIX ONLY)	PART NO.	ENG. NO. (SUFFIX ONLY)
09-01-6031	-3A1	09-01-7031	-3B1	09-01-6038	-3C1	09-01-6082	-3D1		-4E1	09-01-7065	-6F1-BK
09-01-6041	-4A1	09-01-7041	-4B1	009-01-6048	-04C1		-08D1		-6E1	09-01-7087	-8F1-BK
09-01-6051	-5A1	09-01-7051	-5B1	09-01-6088	-08C1		-20D1				
09-01-6064	-6A1	09-01-7064	-6B1		-20C1						
09-01-6081	-8A1	09-01-7081	-8B1								
	-8A1D	09-01-7069	-8B1D								
09-01-6095	-9A2		-8B1D								
09-01-6061	-6A2	09-01-7061	-6B2								
09-01-6085	-8A2	09-01-7085	-8B2								
09-01-6095	-9A2	09-01-7095	-9B2								
09-01-6071	-7A3	09-01-7071	-7B3								
09-01-6086	-8A3	09-01-7086	-8B3								
09-01-6083	-8A4	09-01-7083	-8B4								
09-01-6094	-9A4	09-01-7094	-9B4								
09-01-6091	-9A5	09-01-7091	-9B5								
09-01-6101	-10A6	09-01-7101	-10B6								
09-01-6121	-12A7	09-01-7121	-12B7								
09-01-6129	-12A4	09-01-7129	-12B4								
09-01-6181	-18A8	09-01-7181	-18B8								
09-01-6151	-15A9	09-01-7151	-15B9								
09-01-6161	-16A9	09-01-7161	-16B9								
09-01-6171	-17A10	09-01-7171	-17B10								
09-01-6211	-21A11	09-01-7211	-21B11								
09-01-6224	-22A12	09-01-7224	-22B12								
09-01-6221	-22A13	09-01-7221	-22B13								
09-01-6191	-19A14	09-01-7191	-19B14								
09-01-6241	-24A15	09-01-7241	-24B15								
09-01-7222	-22A16		-6B1-BK								

ADD PART NUMBERS FILED IN 2008-03-05 CIO CHRYSSOSEK APPROV. 2008/07/05	QUALITY SYMBOLS ▽=0 ▽=0	GENERAL TOLERANCES (UNLESS SPECIFIED) <table border="1"> <tr> <th></th> <th>MIN</th> <th>INCH</th> </tr> <tr> <td>4 PLACES ±</td> <td>±.0005</td> <td>±.0002</td> </tr> <tr> <td>3 PLACES ±</td> <td>±.0008</td> <td>±.0003</td> </tr> <tr> <td>2 PLACES ±</td> <td>±.0015</td> <td>±.0005</td> </tr> <tr> <td>1 PLACE ±</td> <td>±.0030</td> <td>±.0010</td> </tr> </table>		MIN	INCH	4 PLACES ±	±.0005	±.0002	3 PLACES ±	±.0008	±.0003	2 PLACES ±	±.0015	±.0005	1 PLACE ±	±.0030	±.0010	DIMENSION STYLE IN/MM DRAWN BY PEREZ-ARGUET DATE 1988/03/02 CHECKED BY PATEL DATE 1988/03/02 APPROVED BY LENZ DATE 1988/03/02	SCALE --- DESIGN UNITS INCH THIRD ANGLE PROJECTION	TITLE EDGE CARD CONNECTOR .156/(3.96) CENTERS CRIMP TYPE-2574 SERIES MOLEX INCORPORATED
		MIN	INCH																	
	4 PLACES ±	±.0005	±.0002																	
	3 PLACES ±	±.0008	±.0003																	
2 PLACES ±	±.0015	±.0005																		
1 PLACE ±	±.0030	±.0010																		
DRAFT WHERE APPLICABLE MUST REMAIN WITHIN DIMENSIONS	PATENT NO. SEE CHART	DOCUMENT NO. SD-2574	SHEET NO. 3 OF 3																	
THIS DRAWING CONTAINS INFORMATION THAT IS PROPRIETARY TO MOLEX INCORPORATED AND SHOULD NOT BE USED WITHOUT WRITTEN PERMISSION																				