

PLEASE CHECK WWW.MOLEX.COM FOR LATEST PART INFORMATION

Part Number: [0008560108](#)
Status: **Active**
Overview: [kk](#)
Description: 3.96mm (.156") Pitch KK@ Crimp Terminal 2578, 22-26 AWG, Bag, Brass, 0.51µm (20µ") Selective Gold (Au)

Documents:

[Drawing \(PDF\)](#) [RoHS Certificate of Compliance \(PDF\)](#)
[Product Specification PS-08-50 \(PDF\)](#)

General

Product Family	Crimp Terminals
Series	2578
Crimp Quality Equipment	Yes
Overview	kk
Product Name	KK@

Physical

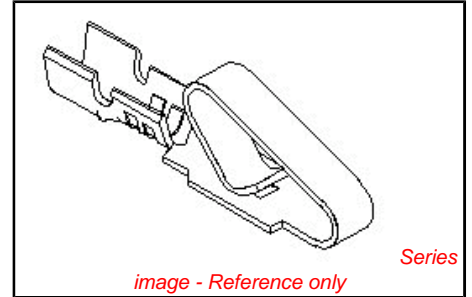
Gender	Female
Material - Metal	Brass
Material - Plating Mating	Gold
Material - Plating Termination	Gold
Packaging Type	Bag
Plating min: Mating (µin)	15
Plating min: Mating (µm)	0.375
Plating min: Termination (µin)	2
Plating min: Termination (µm)	0.05
Termination Interface: Style	Crimp or Compression
Wire Insulation Diameter	1.65mm (.065") max.
Wire Size AWG	22, 24, 26
Wire Size mm ²	N/A

Material Info

Old Part Number	2578-(550)L
-----------------	-------------

Reference - Drawing Numbers

Packaging Specification	PK-2759-001
Product Specification	PS-08-50
Sales Drawing	SD-2578



EU RoHS

ELV and RoHS Compliant
REACH SVHC Contains SVHC: No
Halogen-Free Status
Halogen-Free

China RoHS



Need more information on product environmental compliance?

Email productcompliance@molex.com
 For a multiple part number RoHS Certificate of Compliance, [click here](#)

Please visit the [Contact Us](#) section for any non-product compliance questions.

Search Parts in this Series

[2578Series](#)

Use With

[2574](#) , [2139](#) , [41695](#) , [3069](#) , [6422](#) , [5265](#) , [5239](#)

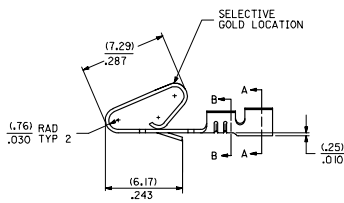
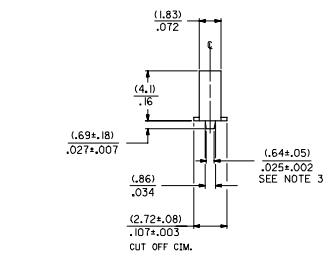
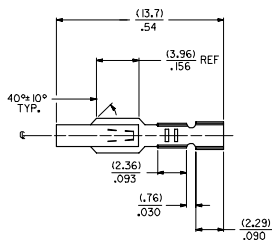
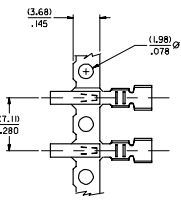
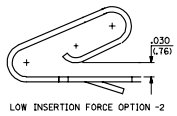
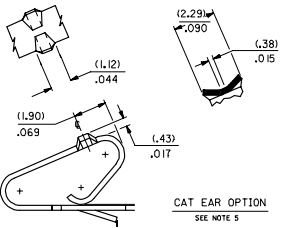
Application Tooling | [FAQ](#)

Tooling specifications and manuals are found by selecting the products below. Crimp Height Specifications are then contained in the Application Tooling Specification document.

Global

Description	Product #
HAND CRIMP TOOL	0638117400
Extraction Tool	0011030016

PLEASE CHECK WWW.MOLEX.COM FOR LATEST PART INFORMATION



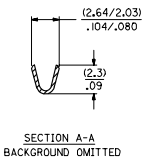
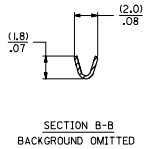
2578 - * - * - * - *
 MATERIAL CODE
 (.28) / .0106 THK
 BLANK-BRASS
 B-PHOS BRONZE

WINDING SPEC.
 A=PER ES-339-A
 BLANK=PER ES-339-B
 L=LOOSE

PLATING CODE
 (PER SDES-88)
 * (P909) OVERALL HOT TIN DIP: 2.54 MICROMETERS MIN
 (560) SELECT GOLD: 0.38 MICROMETERS MIN.
 OVERALL GOLD FLASH: 0.05 MICROMETERS MIN.
 OVERALL NICKEL UNDERPLATE: 0.76 MICROMETERS MIN.
 (555) SELECT GOLD: 0.38 MICROMETERS MIN.
 OVERALL NICKEL UNDERPLATE: 0.76 MICROMETERS MIN.

OPTIONS
 BLANK-AS SHOWN
 I=WITH CAT EARS
 2=LOW INSERTION FORCE

*THE PRIMARY SHIPPING CARTON WILL BE LABELED "COMPLIANT TO ROHS DIRECTIVE 2002/95/EC AND ELV ANNEX II OF DIRECTIVE 2000/53/EC." CARTONS WITHOUT THIS LABEL MAY CONTAIN PRODUCT WITH TIN-LEAD PLATING.



ENTER DESCRIPTION EC NO. IUP205-0928 DRN/BR/IN/OL 2004/11/02 CHK/SA/NEC 2004/11/02 APPROVED FOR RELEASE W	QUALITY SYMBOLS 	GENERAL TOLERANCES (UNLESS SPECIFIED) mm INCH		DRAWN BY PEREZ/AR	DATE 01/29/87	TITLE CRIMP TERMINAL (3.96) / .156 CENTERS 22 TO 26 GA WIRE	SCALE INCH	DESIGN UNITS INCH	THIRD ANGLE PROJECTION
		4 PLACES ± .005 3 PLACES ± .010 2 PLACES ± 0.25 1 PLACE ± 0.36 ANGULAR ± 1/2°	± .005 ± .010 ± .012 ± .012 ± 1/2°	APPROVED BY LENZ	DATE 01/29/87	MOLEX INCORPORATED	DOCUMENT NO. SD-2578	SHEET NO. 1 OF 2	
DRAFT WHERE APPLICABLE MUST REMAIN WITHIN DIMENSIONS		SEE CHART		THIS DRAWING CONTAINS INFORMATION THAT IS PROPRIETARY TO MOLEX INCORPORATED AND SHOULD NOT BE USED WITHOUT WRITTEN PERMISSION					

2578-***		2578-B-***		2578-B-2(***)											
PART NO.	ENG. NO.	PART NO.	ENG. NO.	PART NO.	ENG. NO.	PART NO.	ENG. NO.	PART NO.	ENG. NO.	PART NO.	ENG. NO.	PART NO.	ENG. NO.	PART NO.	ENG. NO.
08-50-0107	2578-(P909)	08-56-0121	2578-B-(501)			2578-B-2(P909)									
08-50-0108	2578-(P909)L	08-56-0122	2578-B-(501)L			2578-B-2(P909)L									
08-50-0111	2578-(103)	08-50-0133	2578-B-(P909)			2578-B-2(555)									
08-50-0112	2578-(109)	08-50-0134	2578-B-(P909)L			2578-B-2(555)L									
08-56-0107	2578-(550)	08-65-0116	2578-B-(555)			2578-B-2(550)									
08-56-0108	2578-(550)L	08-65-0117	2578-B-(555)L			2578-B-2(550)L									
08-55-0105	2578-(555)	08-65-0108	2578-B-(591)												
08-55-0106	2578-(555)L	08-65-0107	2578-B-(591)L												
08-59-0101	2578-(122)	08-60-0003	2578-B-(122)												
	2578-(122)L	08-60-0004	2578-B-(122)L												
08-56-0162	2578-(505)	08-65-0110	2578-B-(558)												
08-56-0163	2578-(505)L	08-65-0111	2578-B-(558)L												
08-50-0504	2578-(128)	08-58-0125	2578-B-(550)												
	2578-(128)L	08-58-0126	2578-B-(550)L												
08-56-0161	2578-(503)														
	2578-(503)L														
08-50-0061	2578-(224)														
08-50-0062	2578-(224)L														
08-50-0065	2578-(P224)														
08-50-0066	2578-(P224)L														
08-55-0137	2578-(558)														
	2578-(558)L														
08-50-0018	2578-(102)														
08-50-0019	2578-(102)L														
08-55-0121	2578-(561)														
08-55-0132	2578-(561)L														
08-55-0123	2578-(558)														
	2578-(558)L														
08-65-0109	2578-(555)														
08-52-0116	2578-(P909)														
08-52-0117	2578-(P909)L														

CHANGE TO METO EC NO. ICP2005-0929 DRAWN/RATNOL 2004/11/16 CHECKED/AMEL 2004/11/02 APPROVED/MSR 2004/11/02 DESCRIPTION (REV)	QUALITY SYMBOLS 	GENERAL TOLERANCES (UNLESS SPECIFIED) <table border="1"> <tr> <th></th> <th>mm</th> <th>INCH</th> </tr> <tr> <td>4 PLACES</td> <td>± .005</td> <td>± .0005</td> </tr> <tr> <td>3 PLACES</td> <td>± .008</td> <td>± .0008</td> </tr> <tr> <td>2 PLACES</td> <td>± .015</td> <td>± .0015</td> </tr> <tr> <td>1 PLACE</td> <td>± .030</td> <td>± .0030</td> </tr> </table>		mm	INCH	4 PLACES	± .005	± .0005	3 PLACES	± .008	± .0008	2 PLACES	± .015	± .0015	1 PLACE	± .030	± .0030	DIMENSION STYLE IN/MM	SCALE INCH	DESIGN UNITS INCH	THIRD ANGLE PROJECTION
		mm	INCH																		
4 PLACES	± .005	± .0005																			
3 PLACES	± .008	± .0008																			
2 PLACES	± .015	± .0015																			
1 PLACE	± .030	± .0030																			
DRAWN BY: PEREZ/AR CHECKED BY: PATEL APPROVED BY: LENZ	DATE: 01/29/87 DATE: 01/29/87 DATE: 01/29/87	TITLE: CRIMP TERMINAL (3.96)/.156 CENTERS 22 TO 26 GA WIRE MOLEX INCORPORATED	MATERIAL NO.: SEE CHARTS DOCUMENT NO.: SD-2578	SHEET NO.: 2	THIS DRAWING CONTAINS INFORMATION THAT IS PROPRIETARY TO MOLEX INCORPORATED AND SHOULD NOT BE USED WITHOUT WRITTEN PERMISSION																