

PLEASE CHECK WWW.MOLEX.COM FOR LATEST PART INFORMATION

Part Number: [0002081201](#)
Status: **Active**
Overview: [disk_drive_power_connector](#)
Description: Disk Drive Power Connection System, Female Crimp Terminal, Reel, Phosphor Bronze, AWG 14-20

Documents:

[Drawing \(PDF\)](#) [RoHS Certificate of Compliance \(PDF\)](#)
[Product Specification PS-8981-4M*/4P* \(PDF\)](#)

General

Product Family Crimp Terminals
 Series [8980](#)
 Crimp Quality Equipment Yes
 Overview [disk_drive_power_connector](#)
 Product Name Disk Drive Power

Physical

Durability (mating cycles max) 50
 Gender Female
 Material - Metal Phosphor Bronze
 Material - Plating Mating Tin
 Material - Plating Termination Tin
 Packaging Type Reel
 Plating min: Mating (µin) 35
 Plating min: Mating (µm) 0.89
 Plating min: Termination (µin) 35
 Plating min: Termination (µm) 0.89
 Termination Interface: Style Crimp or Compression
 Wire Insulation Diameter 2.03-2.74mm (.080-.108")
 Wire Size AWG 14, 16, 18, 20
 Wire Size mm² N/A

Material Info

Old Part Number 8980-3C

Reference - Drawing Numbers

Product Specification PS-8981-4M*/4P*
 Sales Drawing SD-8980-3*

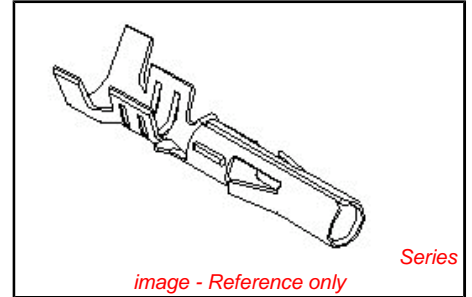


image - Reference only

EU RoHS

ELV and RoHS Compliant
REACH SVHC Contains SVHC: No
Halogen-Free Status
Halogen-Free

China RoHS



Need more information on product environmental compliance?

Email productcompliance@molex.com
 For a multiple part number RoHS Certificate of Compliance, [click here](#)

Please visit the [Contact Us](#) section for any non-product compliance questions.

Search Parts in this Series

[8980Series](#)

Use With

[8981P](#)

Application Tooling | FAQ

Tooling specifications and manuals are found by selecting the products below. Crimp Height Specifications are then contained in the Application Tooling Specification document.

Global

Description	Product #
Mini-Mac™ Applicator for Disk Drive Power Connector System, Female 14-20 AWG	0638929000
Hand Crimp Tool	0638117000
Extraction Tool	0011030037
Terminator Die	0011402282

Japan

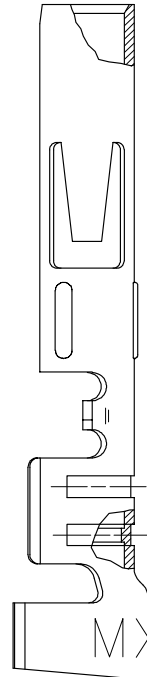
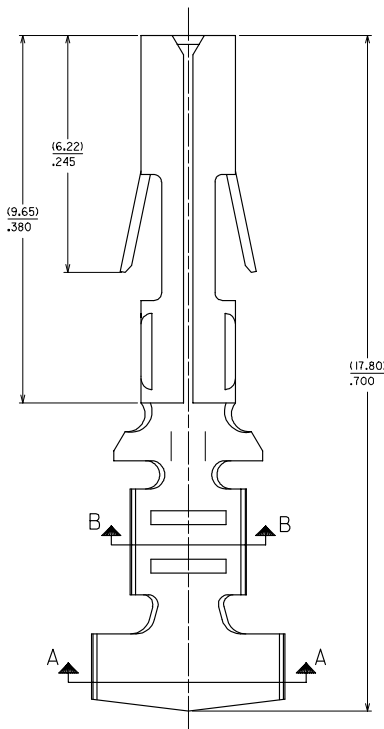
Description	Product #
-------------	-----------

Applicator for M211A [0571023000](#)
Bench Press, 14-22
AWG, for 8980-3C
and 8980-3C1 Crimp
Terminal

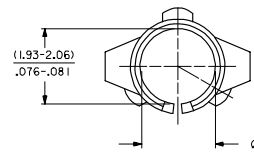
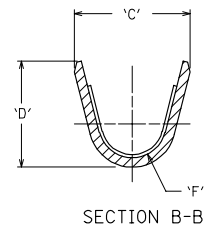
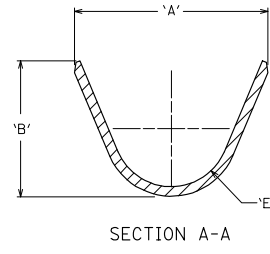
This document was generated on 05/17/2010

PLEASE CHECK WWW.MOLEX.COM FOR LATEST PART INFORMATION

EDP NO.	ENG NO.	FORM	'A'	'B'	'C'	'D'	'E'	'F'
02-08-1201	8980-3C	CHAIN,14-20 AWG WIRE	(4.44)	(3.39)	(3.02)	(3.61)	(1.23)	(0.61)
02-08-1202	8980-3L	LOOSE,14-20 AWG WIRE	.175	.133	.119	.142	.048	.024



NOTES:
 1. FINISH: (.00089)/.000035 MN. TIN OVER
 (.00051)/.000020 MN COPPER (COPPER PLATE REFLOWED)
 2. MATERIAL: (.025)/.010 THK PHOS
 BRONZE, ALLOY CA 51000.



OBS060702 EC NO. S2007-0797 DRAWN: MEMARLY 2007/03/30 CHKD: SKANG 2007/04/03 APPR: HLONG 2007/04/03	QUALITY SYMBOLS ▽=0 ▽=0	GENERAL TOLERANCES (UNLESS SPECIFIED)		DIMENSION STYLE MM/IN		SCALE NTS	DESIGN UNITS METRIC	THIRD ANGLE PROJECTION	
		mm	INCH	DRAWN BY TAY	DATE 1987/12/15	TITLE TERMINAL SOCKET DIA. (2.096)/.0825			
		4 PLACES ± --- ± ---		CHECKED BY AT	DATE 1987/12/15	MOLEX INCORPORATED			
		3 PLACES ± --- ± .010		APPROVED BY AB	DATE 1987/12/15	MATERIAL NO.	DOCUMENT NO. SD-8980-3*	SHEET NO. 1 OF 1	
2 PLACES ± 0.25 ± ---		DRAFT WHERE APPLICABLE MUST REMAIN WITHIN DIMENSIONS		SEE TABLE	THIS DRAWING CONTAINS INFORMATION THAT IS PROPRIETARY TO MOLEX INCORPORATED AND SHOULD NOT BE USED WITHOUT WRITTEN PERMISSION				
1 PLACE ± --- ± ---				SIZE A3					
ANGULAR ± 1 °									