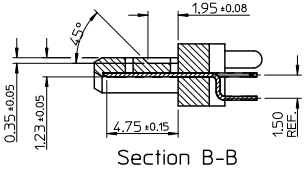
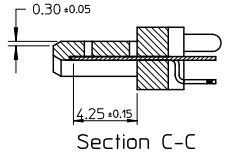
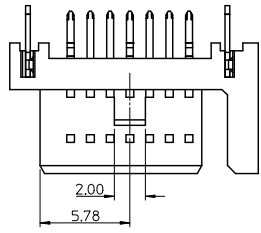


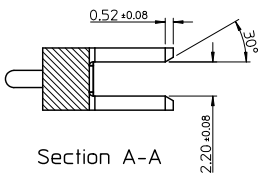
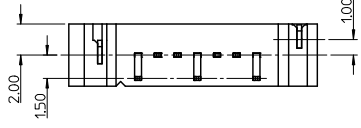
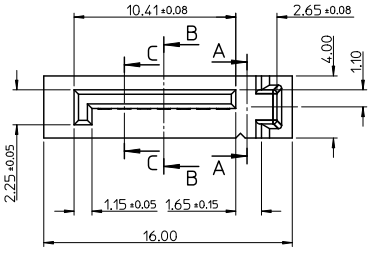
10 9 8 7 6 5 4 3 2 1



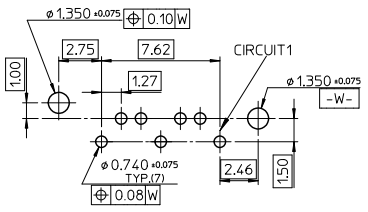
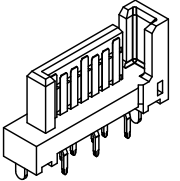
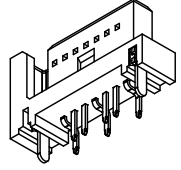
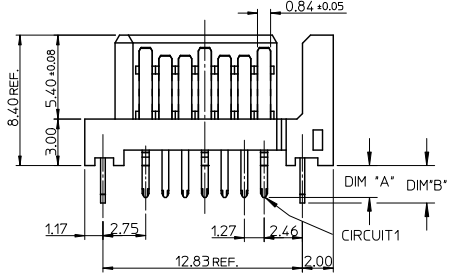
Section B-B



Section C-C



Section A-A



RECOMMENDED P.C.B. LAYOUT t=1.6mm OR 2.0mm

- NOTES:
- MATERIAL:
HOUSING: SEE TABLE, UL94V-0, COLOR: BLACK OR BULE (SEE P/N TABLE)
TERMINAL/PEG: COPPER ALLOY
 - TERMINAL PLATING :
CONTACT AREA: GOLD PLATED
SOLDER TAIL: 1.27 MICRON MIN. TIN PLATED
UNDER PLATE: 1.27 MICRON MIN. NICKEL PLATED
 - PEG PLATING:
1.27 MICRON MIN. TIN PLATED
OVERALL 1.27 MICRON MIN. NICKEL UNDER PLATED
 - PACKAGING SPECIFICATION REFER TO PK-67491-001
 - PRODUCT SPECIFICATION REFER TO PS-67491-001
 - MATING PART: 67489
 - RECOMMENDED PROCESS: WAVE SOLDERING
 - PRODUCT COMPLIANT TO RoHS DIRECTIVE 2002/95/EC AND ELV DIRECTIVE 2000/53/EC

OBSOLETE PARTS EC NO: SH2012-0231 DRAWING: 2012/01/18 CHKD: XZHZHANG APPR: ATIN 2012/01/20	DESCRIPTION	QUALITY SYMBOLS	GENERAL TOLERANCES (UNLESS SPECIFIED)		DIMENSION STYLE	SCALE	DESIGN UNITS	THIRD ANGLE PROJECTION	
		▽=0	mm	INCH	MM ONLY	4:1	METRIC		
		▽=0	4 PLACES ± --- ± ---	3 PLACES ± --- ± ---	2 PLACES ± 0.15 ± ---	1 PLACE ± 0.25 ± ---	ANGULAR ± 3°	DRAWN BY: GLLI DATE: 2012/01/18 CHECKED BY: XZAHNG DATE: 2012/01/18 APPROVED BY: DATE:	
		▽=0	DRAFT WHERE APPLICABLE MUST REMAIN WITHIN DIMENSIONS		MATERIAL NO. SEE CHART IN SHEET 2		DOCUMENT NO. SD-67491-002		SHEET NO. 1 OF 2
					TITLE: 1.27MM HIGH SPEED SERIAL PLUG VERTICAL TYPE		MOLEX INCORPORATED		
					THIS DRAWING CONTAINS INFORMATION THAT IS PROPRIETARY TO MOLEX INCORPORATED AND SHOULD NOT BE USED WITHOUT WRITTEN PERMISSION				

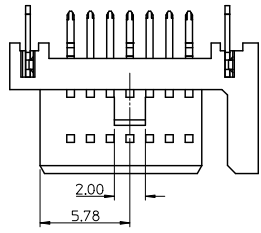
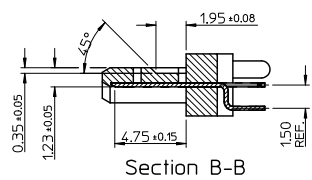
10	9	8	7	6	5	4	3	2	1
P/N	SUB-ASSEMBLY	CONTACT PLATING TYPE	DIM'A'	DIM'B'	PCB THICKNESS	COLOR	PLASTIC TYPE	SOLDER TAIL PLATING	
67491-1030	67599-0005	GOLD FLASH							
67491-1031	67599-0006	0.76 MICRON GOLD PLATED	2.05	2.40	1.60	BLACK	THERMAL PLASTIC	PURE TIN	
67491-1032	67599-0007	0.38 MICRON GOLD PLATED							
67491-1038	67599-0005	GOLD FLASH							
67491-1039	67599-0006	0.76 MICRON GOLD PLATED	3.00	3.20	2.40				
67491-1040	67599-0007	0.38 MICRON GOLD PLATED							
67491-2031	67599-0206	0.76 MICRON GOLD PLATED	2.05	2.40	1.60	PANTONE NO.293C $\Delta E < 2$			
67491-2032	67599-0207	0.38 MICRON GOLD PLATED							
67491-2035	67599-0205	GOLD FLASH							
67491-2036	67599-0206	0.76 MICRON GOLD PLATED	2.35	2.40	2.00				
67491-2037	67599-0207	0.38 MICRON GOLD PLATED							
67491-2038	67599-0205	GOLD FLASH							
67491-2039	67599-0206	0.76 MICRON GOLD PLATED	3.00	3.20	2.40				
67491-2040	67599-0207	0.38 MICRON GOLD PLATED							
67491-1139	67599-0106	0.76 MICRON GOLD PLATED	3.00	3.20	2.40	BLACK	HIGH TEMPERATURE THERMAL PLASTIC		



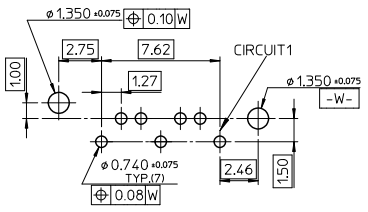
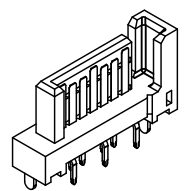
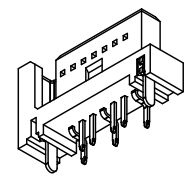
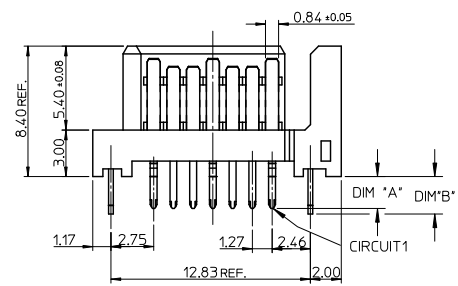
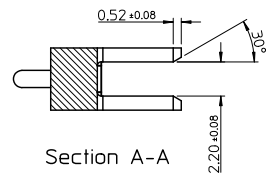
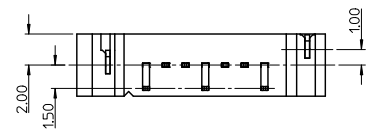
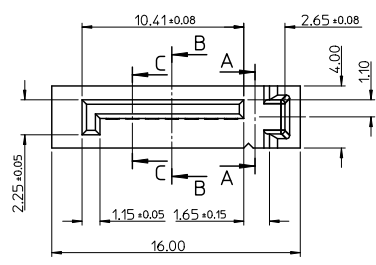
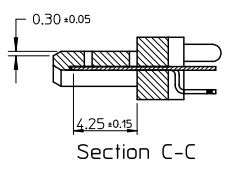
OBsolete PARTS EC NO: SH2012-0231 I DRWINGLLI 2012/01/18 CHYKXOZHANG 2012/01/18 APPR:ATIN 2012/01/20 REV	QUALITY SYMBOLS	GENERAL TOLERANCES (UNLESS SPECIFIED)	DIMENSION STYLE	SCALE	DESIGN UNITS	THIRD ANGLE PROJECTION
	$\nabla=0$	mm INCH	MM ONLY	4:1	METRIC	
	$\nabla=0$	4 PLACES ± --- ± ---	DRAWN BY DATE	TITLE		
	$\nabla=0$	3 PLACES ± --- ± ---	GLL I 2012/01/18	1.27MM HIGH SPEED SERIAL PLUG VERTICAL TYPE		
	$\nabla=0$	2 PLACES ± 0.15 ± ---	CHECKED BY DATE	MOLEX INCORPORATED		
	1 PLACE ± 0.25 ± ---	XOZAHNG 2012/01/18	DOCUMENT NO. SD-67491-002 SHEET NO. 2 OF 2			
	ANGULAR ± 3°	APPROVED BY DATE				
	DRAFT WHERE APPLICABLE MUST REMAIN WITHIN DIMENSIONS	MATERIAL NO. SEE CHART				
		SIZE A 3	THIS DRAWING CONTAINS INFORMATION THAT IS PROPRIETARY TO MOLEX INCORPORATED AND SHOULD NOT BE USED WITHOUT WRITTEN PERMISSION			

10	9	8	7	6	5	4	3	2	1
tb_frame_A3_P_AM.T									
Rev. F 2009/06/18									

10 9 8 7 6 5 4 3 2 1



- NOTES:
- MATERIAL:
HOUSING: SEE TABLE, UL94V-0, COLOR: BLACK OR BULE (SEE P/N TABLE)
TERMINAL/PEG: COPPER ALLOY
 - TERMINAL PLATING :
CONTACT AREA: GOLD PLATED
SOLDER TAIL: 1.27 MICRON MIN. TIN PLATED
UNDER PLATE: 1.27 MICRON MIN. NICKEL PLATED
 - PEG PLATING:
1.27 MICRON MIN. TIN PLATED
OVERALL 1.27 MICRON MIN. NICKEL UNDER PLATED
 - PACKAGING SPECIFICATION REFER TO PK-67491-001
 - PRODUCT SPECIFICATION REFER TO PS-67491-001
 - MATING PART: 67489
 - RECOMMENDED PROCESS: WAVE SOLDERING
 - PRODUCT COMPLIANT TO RoHS DIRECTIVE 2002/95/EC AND ELV DIRECTIVE 2000/53/EC



OBSOLETE PARTS EC NO: SH2011-0104 DRAWING: 2010/10/22 CHKD: 2010/11/03 APPR: RZHANG	DESCRIPTION	QUALITY SYMBOLS	GENERAL TOLERANCES (UNLESS SPECIFIED)	DIMENSION STYLE	SCALE	DESIGN UNITS	THIRD ANGLE PROJECTION
	REV			MM ONLY	4:1	METRIC	
				mm			
				INCH			

4 PLACES	± ---	± ---
3 PLACES	± ---	± ---
2 PLACES	± 0.15	± ---
1 PLACE	± 0.25	± ---
ANGULAR ± 3°		
DRAFT WHERE APPLICABLE MUST REMAIN WITHIN DIMENSIONS		

DRAWN BY	DATE	TITLE
RICHARD	'01/06/21	1.27MM HIGH SPEED SERIAL PLUG VERTICAL TYPE
CHECKED BY	DATE	
VINCENT	'01/06/21	
APPROVED BY	DATE	
RZHANG	2010/11/03	
MATERIAL NO.	DOCUMENT NO.	SHEET NO.
SEE CHART IN SHEET 2	SD-67491-002	1 OF 2

MOLEX INCORPORATED	
THIS DRAWING CONTAINS INFORMATION THAT IS PROPRIETARY TO MOLEX INCORPORATED AND SHOULD NOT BE USED WITHOUT WRITTEN PERMISSION	

	10	9	8	7	6	5	4	3	2	1	
	P/N	CONTACT PLATING TYPE	*A*	*B*	PCB THICKNESS	SOLDERING PLATE	COLOR	PLASTIC TYPE			
F	67491-1030	GOLD FLASH	2.05	2.40	1.60	PURE TIN	BLACK	THERMAL PLASTIC			
	67491-1031	0.76 MICRON GOLD PLATED									
	67491-1032	0.38 MICRON GOLD PLATED									
67491-1035	GOLD FLASH	2.35	2.40	2.00							
67491-1036	0.76 MICRON GOLD PLATED										
67491-1037	0.38 MICRON GOLD PLATED										
E	67491-1038	GOLD FLASH	3.00	3.20	2.40		PURE TIN	BLACK	THERMAL PLASTIC		
	67491-1039	0.76 MICRON GOLD PLATED									
	67491-1040	0.38 MICRON GOLD PLATED									
D	67491-2031	0.76 MICRON GOLD PLATED	2.05	2.40	1.60		PURE TIN	BLUE PENTONE NO.293C $\Delta E < 3$	THERMAL PLASTIC		
	67491-2032	0.38 MICRON GOLD PLATED									
	67491-2035	GOLD FLASH	2.35	2.40	2.00						
67491-2036	0.76 MICRON GOLD PLATED										
67491-2037	0.38 MICRON GOLD PLATED										
C	67491-2038	GOLD FLASH	3.00	3.20	2.40	PURE TIN				BLACK	HIGH TEMPERATURE THERMAL PLASTIC
	67491-2039	0.76 MICRON GOLD PLATED									
	67491-2040	0.38 MICRON GOLD PLATED									
B	67491-1130	GOLD FLASH	2.05	2.40	1.60	PURE TIN		BLACK	HIGH TEMPERATURE THERMAL PLASTIC		
	67491-1131	0.76 MICRON GOLD PLATED									
	67491-1132	0.38 MICRON GOLD PLATED	2.35	2.40	2.00						
	67491-1135	GOLD FLASH									
	67491-1136	0.76 MICRON GOLD PLATED									
	A	67491-1137	0.38 MICRON GOLD PLATED	3.00	3.20		2.40			PURE TIN	BLACK
67491-1138		GOLD FLASH									
67491-1139		0.76 MICRON GOLD PLATED									
	67491-1140	0.38 MICRON GOLD PLATED									

OBsolete PARTS EC NO: SH2011-0104 DRWING: GLLI CHYD: APPR: RZHANG 2010/10/22 2010/11/03 DESCRIPTION REV	QUALITY SYMBOLS	GENERAL TOLERANCES (UNLESS SPECIFIED)	DIMENSION STYLE	SCALE	DESIGN UNITS	THIRD ANGLE PROJECTION
	$\nabla=0$	mm INCH	MM ONLY	4:1	METRIC	
	$\nabla=0$	4 PLACES ± --- ± ---	DRAWN BY DATE	TITLE		
	$\nabla=0$	3 PLACES ± --- ± ---	RICHARD '01/06/21	1.27MM HIGH SPEED SERIAL PLUG VERTICAL TYPE		
	2 PLACES ± 0.15 ± ---	CHECKED BY DATE	MOLEX INCORPORATED			
	1 PLACE ± 0.25 ± ---	VINCENT '01/06/21	SD-67491-002			
	ANGULAR ± 3°	APPROVED BY DATE	SHEET NO.			
	DRAFT WHERE APPLICABLE MUST REMAIN WITHIN DIMENSIONS	RZHANG 2010/11/03	2 OF 2			
		MATERIAL NO.	DOCUMENT NO.			
		SEE CHART	THIS DRAWING CONTAINS INFORMATION THAT IS PROPRIETARY TO MOLEX INCORPORATED AND SHOULD NOT BE USED WITHOUT WRITTEN PERMISSION			

tb_frame_A3_P_AM_T
Rev. F 2009/06/18